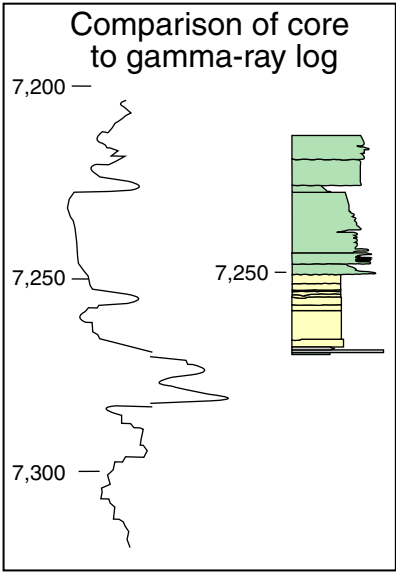
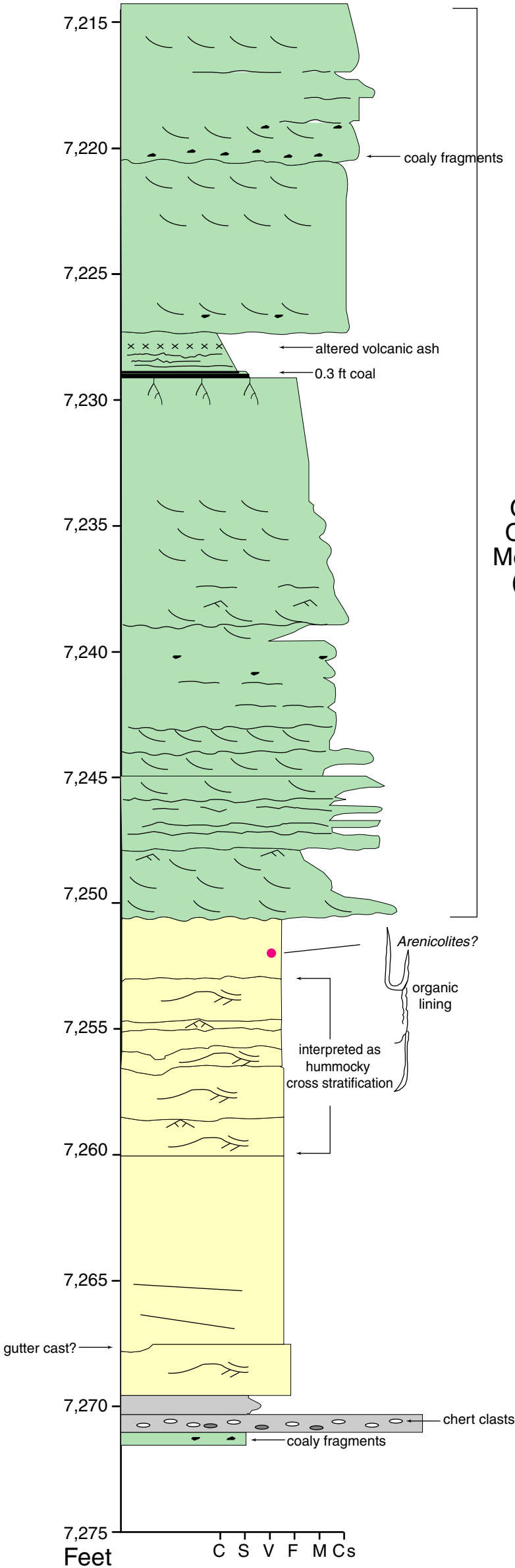


B-1

Enron Oil and Gas Resources, Inc.
134-7 Green River Bend Unit
sec. 7, T. 26 N., R. 112 W.
6,621 KB
7,375 TD

USGS Core E540

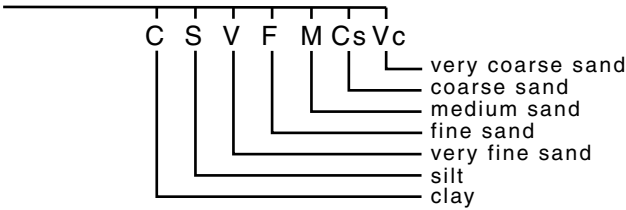


EXPLANATION

Depositional environments	
	Continental deposits; includes fluvial and tidal sandstones, mudrock, carbonaceous shale, and coal
	Shoreface sandstones
	Offshore to marine mudrocks and shale

	Trough or planar-tabular cross stratification		Hummocky cross stratification
	Current ripples		Wave ripples
	Horizontal or subhorizontal bedding		Flaser bedding
	Convolute bedding		Wavy bedding
	Lamination		Lenticular bedding
	Mud clasts		Streaky bedding
	Chert clasts		Erosional contact
	Coal or plant fragments		Sharp contact
	Coal		Roots
	Altered volcanic ash		Planolites
			Ophiomorpha
			Burrows

Grain size



GRAPHIC LOG OF USGS CORE E540 OF THE FRONTIER FORMATION

By
Mark A. Kirschbaum and Laura N.R. Roberts
2005



[Click here to return to Chapter 15](#)