




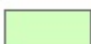


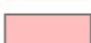

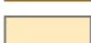









Appendix 5. Figures Showing Counties With the Largest Population Density Changes Between 1970 and 2010, With 2010 Population Greater Than 100,000

Supplemental figures showing this product for the 10 counties in the conterminous United States with the largest population density change for counties with 2010 population greater than 100,000, from 1970–2010 (National Historical Geographic Information System, 2013). Population density units are persons per square kilometer. Legend for all figures is given on this page.

Legend:

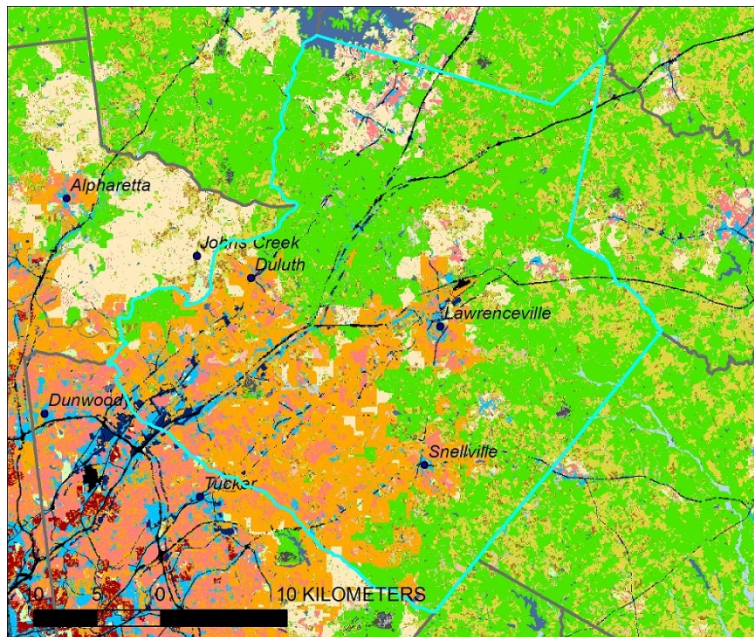
	11 - Water
	12 - Wetlands
	21 - Developed, Major Transportation
	22 - Developed, Commercial/Services
	23 - Developed, Industrial/Military
	24 - Developed, Recreation
	25 - Developed, Residential, High Density
	26 - Developed, Residential, Low-Medium Density
	27 - Developed, Other
	31 - Semi-Developed, Urban Interface High
	32 - Semi-Developed, Urban Interface Low Medium
	33 - Semi-Developed, Anthropogenic Other
	41 - Production, Mining/Extraction
	43 - Production, Crops
	44 - Production, Pasture/Hay
	45 - Production, Grazing Potential
	50 - Low Use
	60 - Very Low Use, Conservation

1. Gwinnett County, Georgia (northeast of Atlanta)

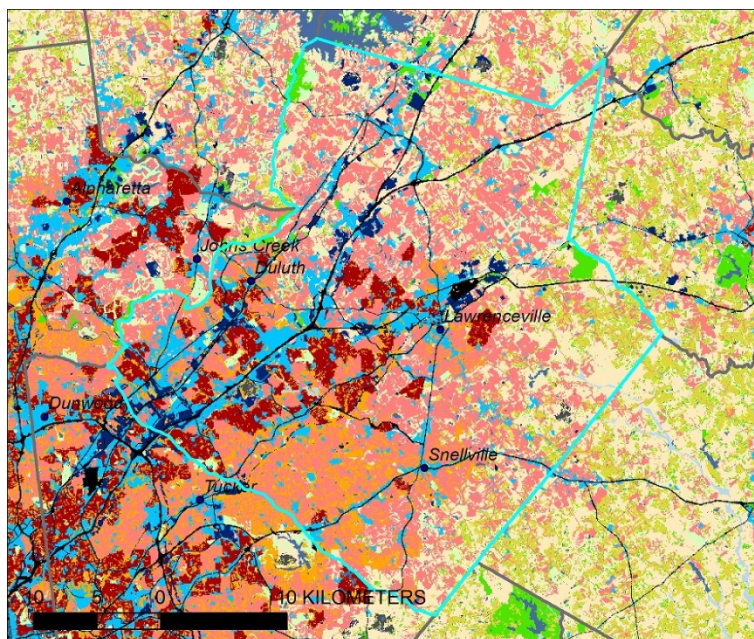
1970 population density: 64.0

2010 population density: 711.9

1974 land use:

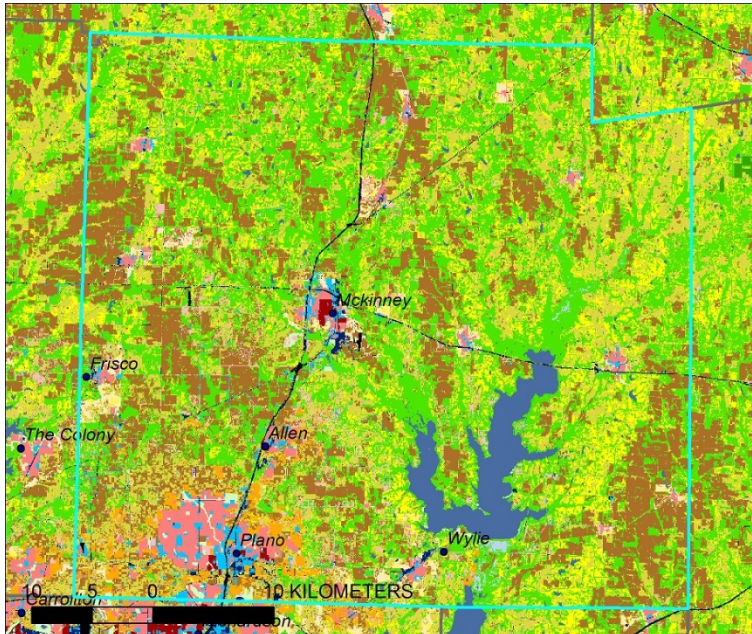


2012 land use:

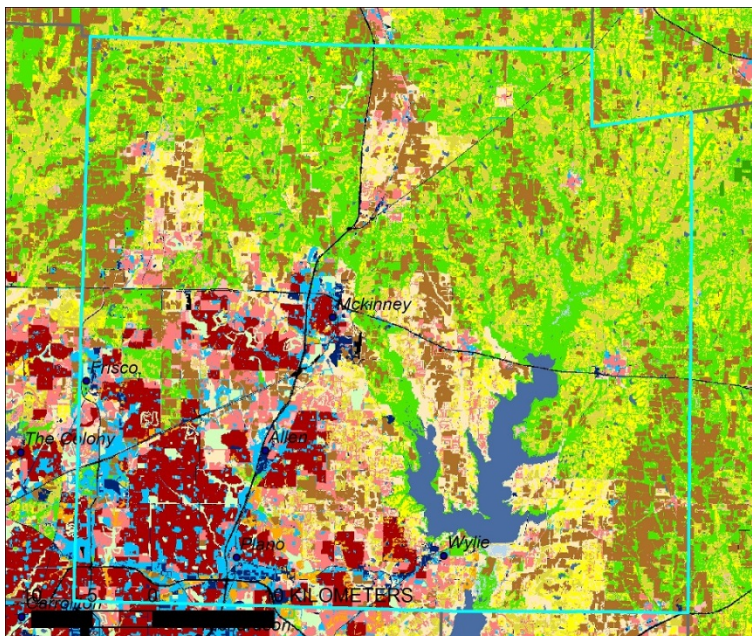


2. Collin County, Texas (north of Dallas)
1970 population density: 29.2
2010 population density: 340.9

1974 land use:

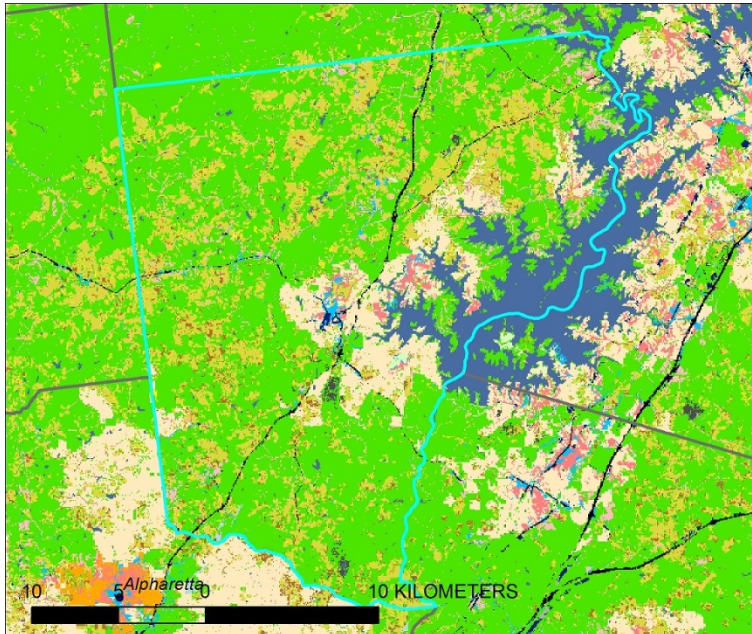


2012 land use:

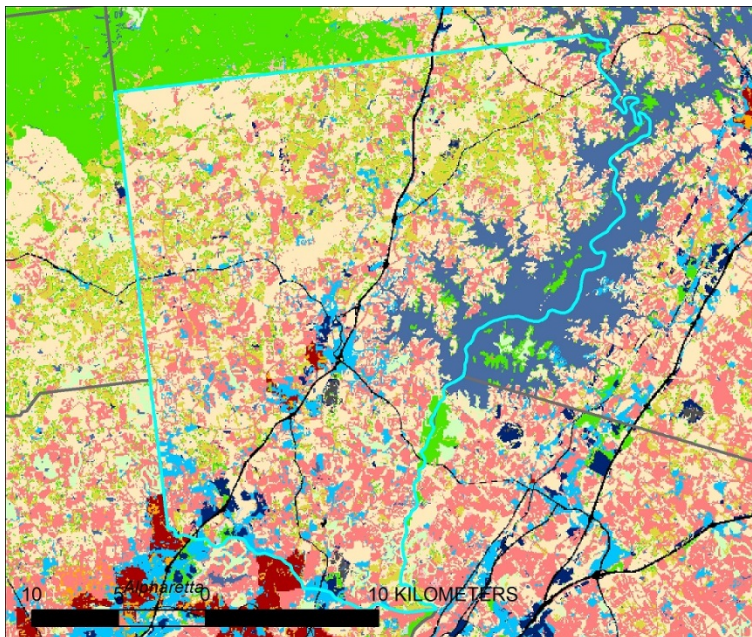


3. Forsyth County, Georgia (northeast of Atlanta)
1970 population density: 26.4
2010 population density: 274.2

1974 land use:

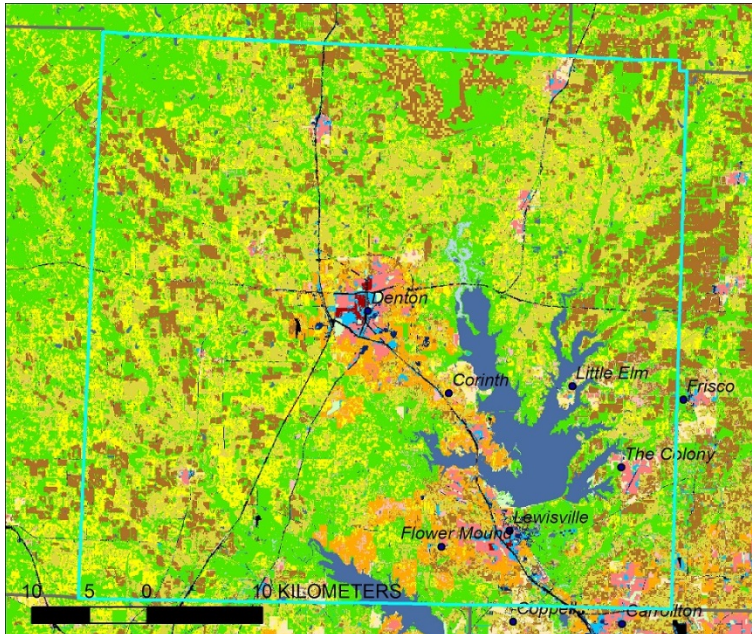


2012 land use:

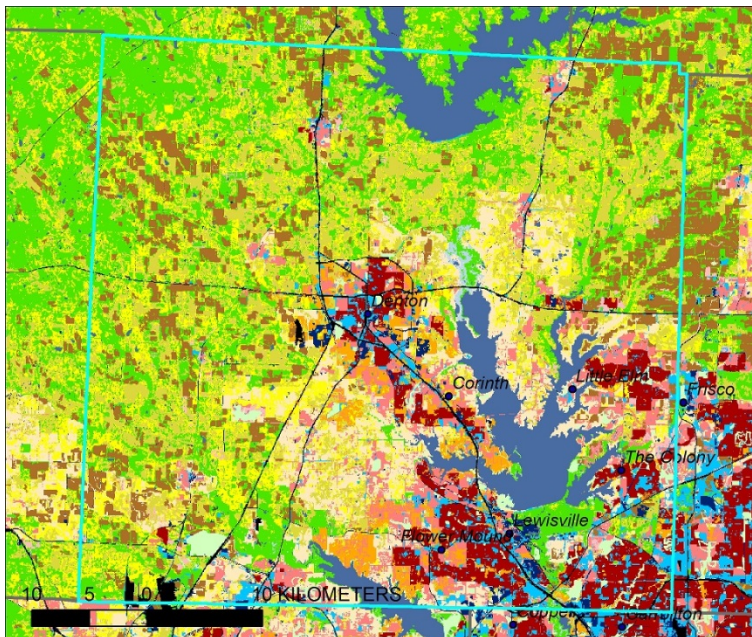


4. Denton County, Texas (north of Dallas-Fort Worth)
1970 population density: 30.5
2010 population density: 268.5

1974 land use:



2012 land use:

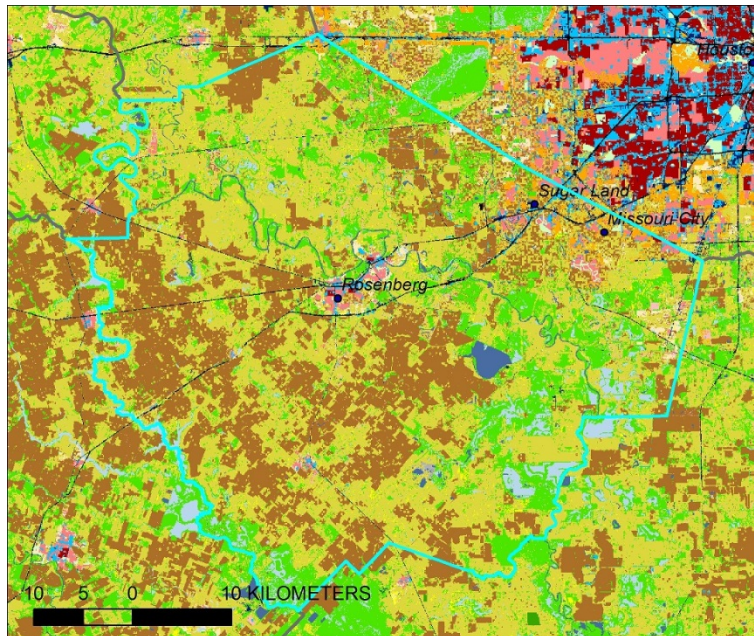


5. Fort Bend County, Texas (southwest of Houston)

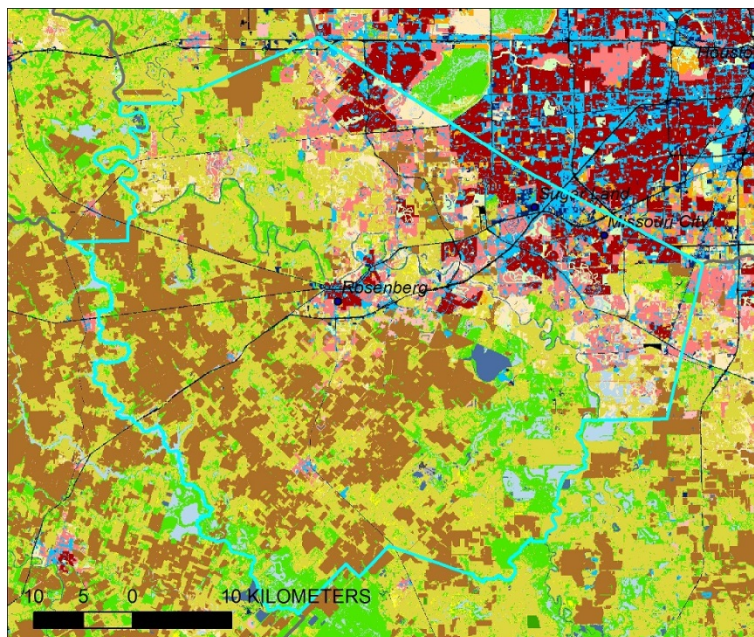
1970 population density: 22.8

2010 population density: 255.3

1974 land use:

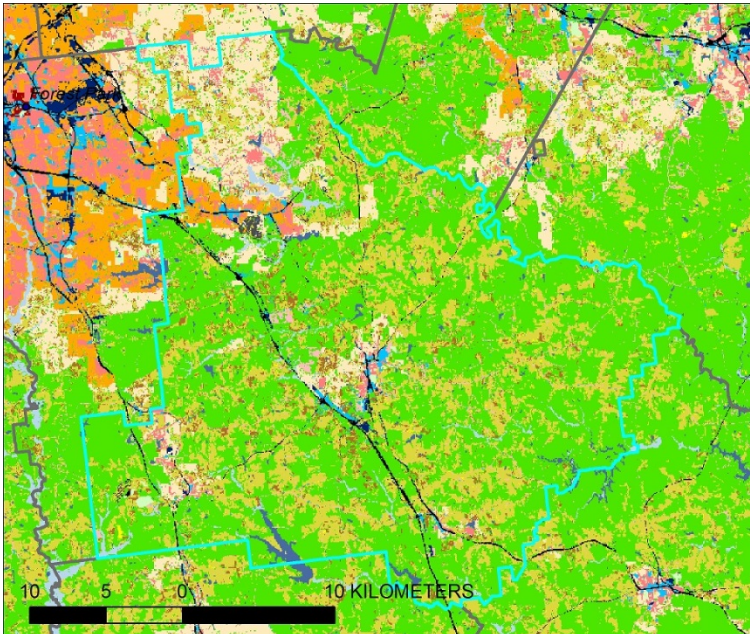


2012 land use:

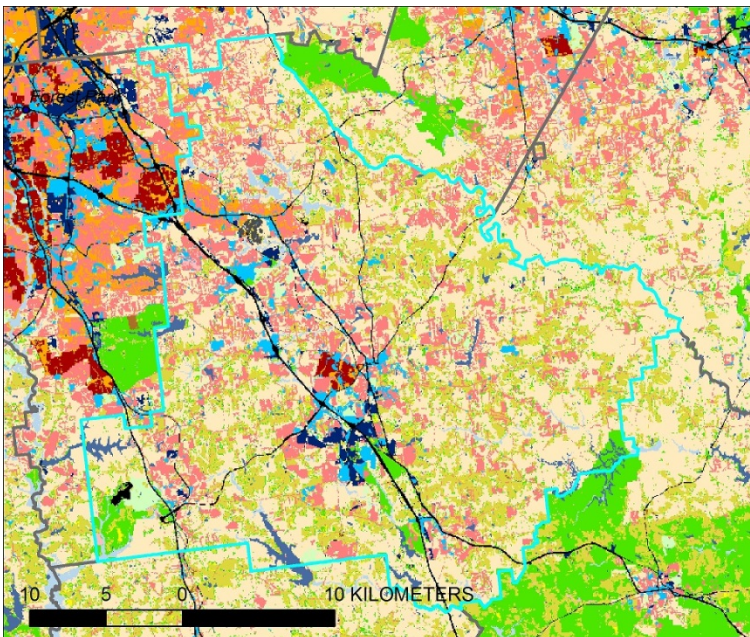


6. Henry County, Georgia (southeast of Atlanta)
1970 population density: 28.2
2010 population density: 241.1

1974 land use:

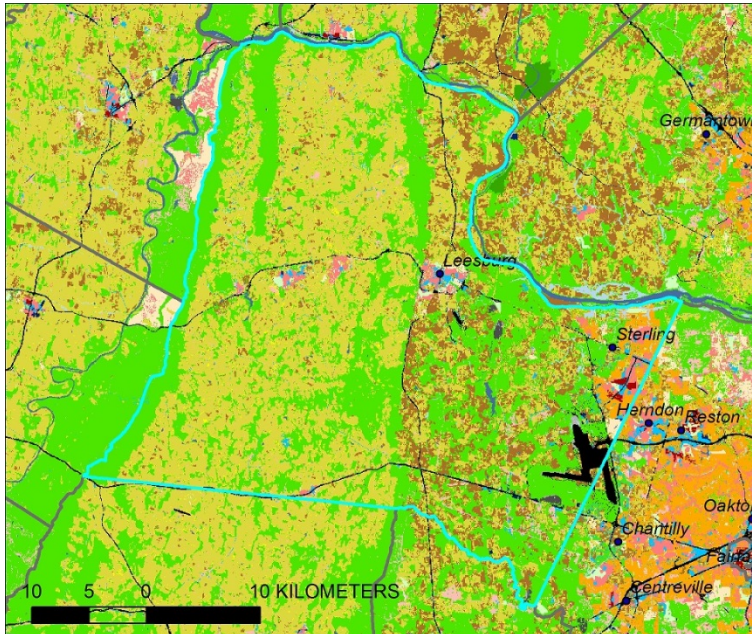


2012 land use:

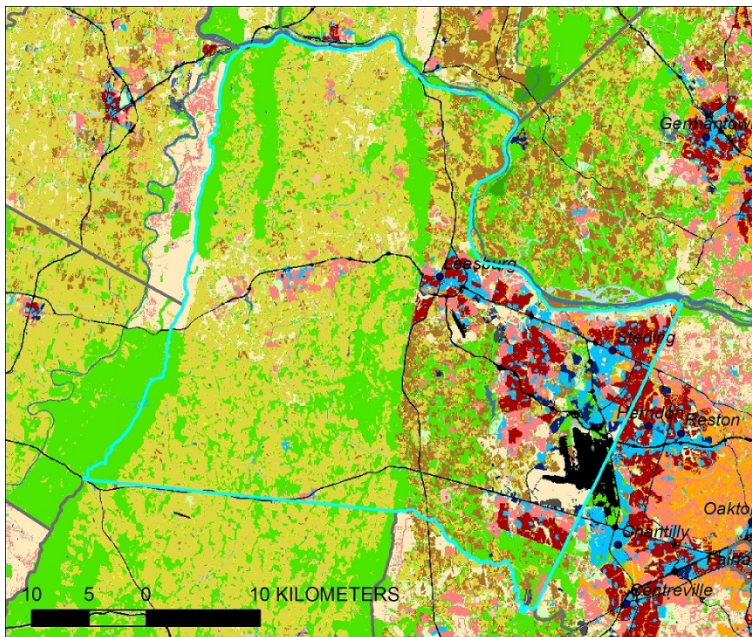


7. Loudoun County, Virginia (west of Washington D.C.)
1970 population density: 27.5
2010 population density: 231.4

1974 land use:

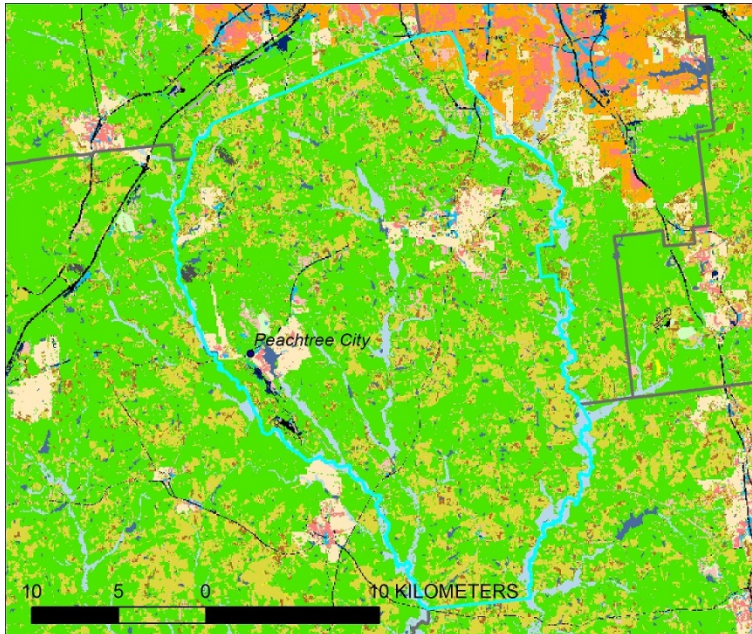


2012 land use:

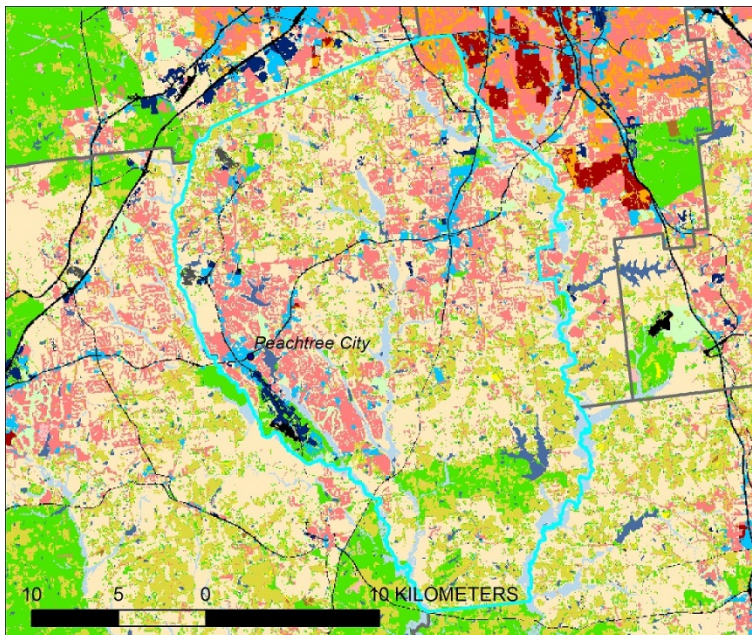


8. Fayette County, Georgia (south of Atlanta)
1970 population density: 22.0
2010 population density: 206.4

1974 land use:

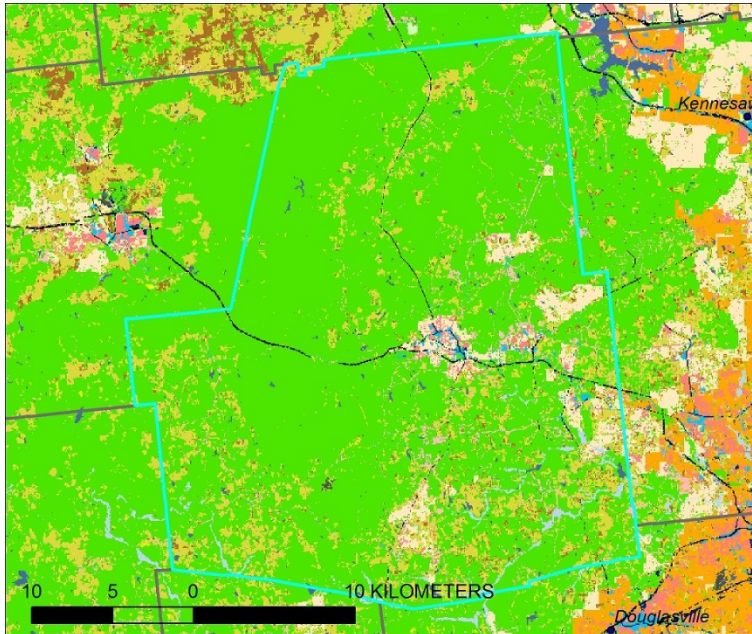


2012 land use:

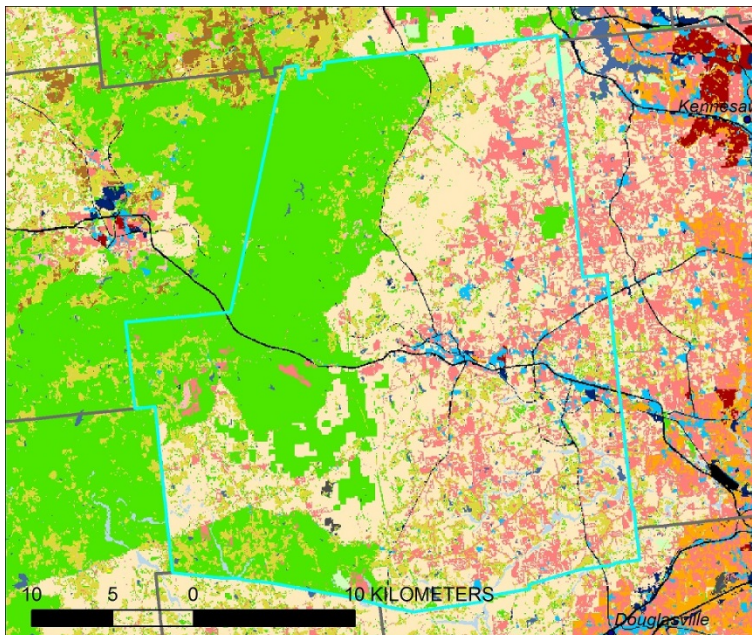


9. Paulding County, Georgia (northwest of Atlanta)
1970 population density: 21.5
2010 population density: 174.8

1974 land use:



2012 land use:

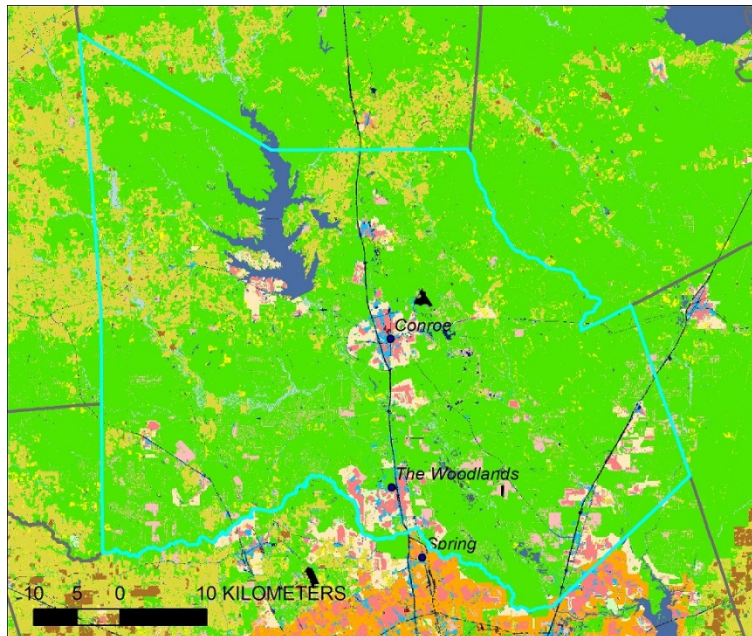


10. Montgomery County, Texas (north of Houston)

1970 population density: 17.7

2010 population density: 163.4

1974 land use:



2012 land use:

