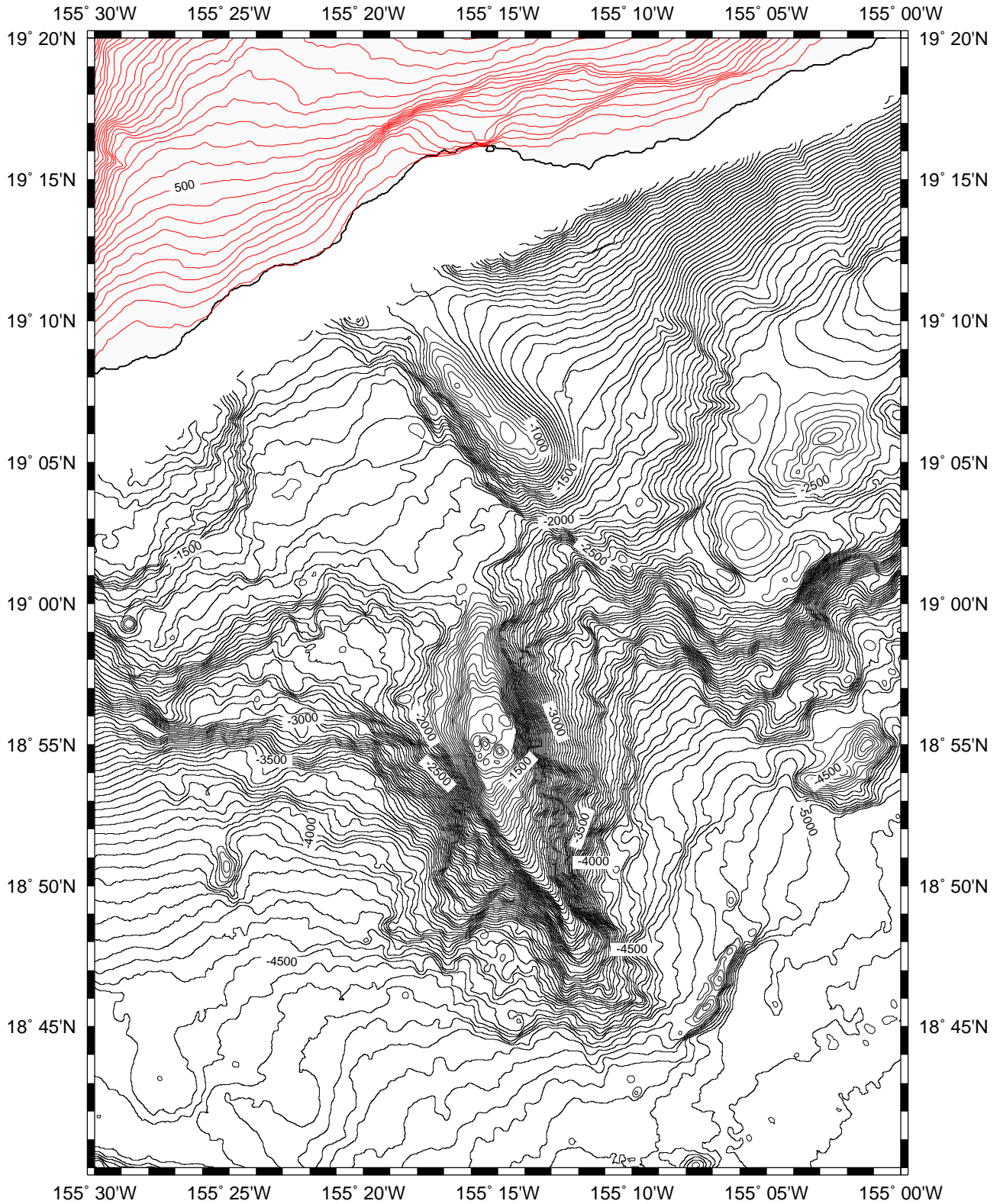


Loihi Seamount bathymetry & topography -- JAMSTEC KR9809 & YK9907 SeaBeam



GMT Sep 19 06:32 R/V Kairei 9809 and Yokosuka 9907 SeaBeam 2100 data. Contour interval: 50m. Copyright 1999, JAMSTEC.

miles
0 5

km
0 5