

# Grain-Size Analysis Worksheet Version 1.0 CAW

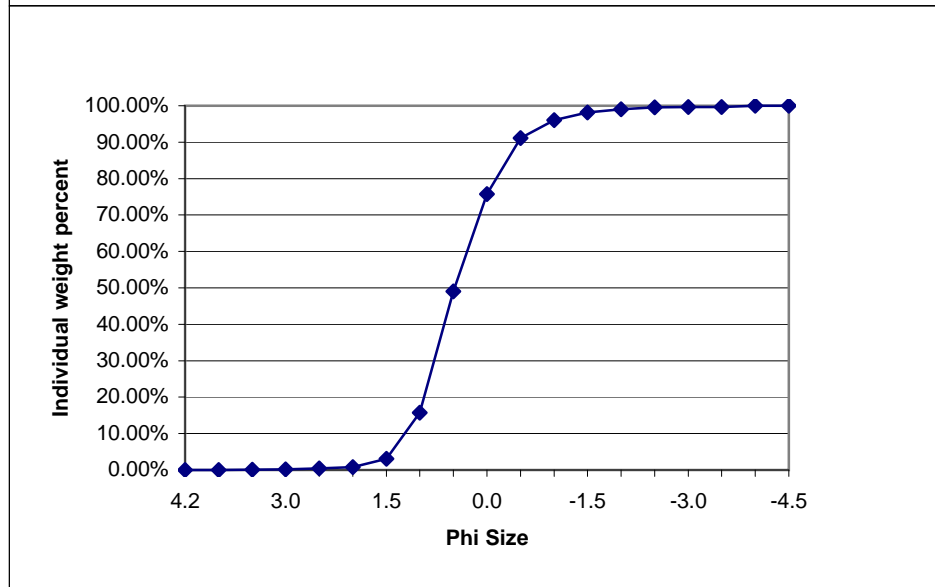
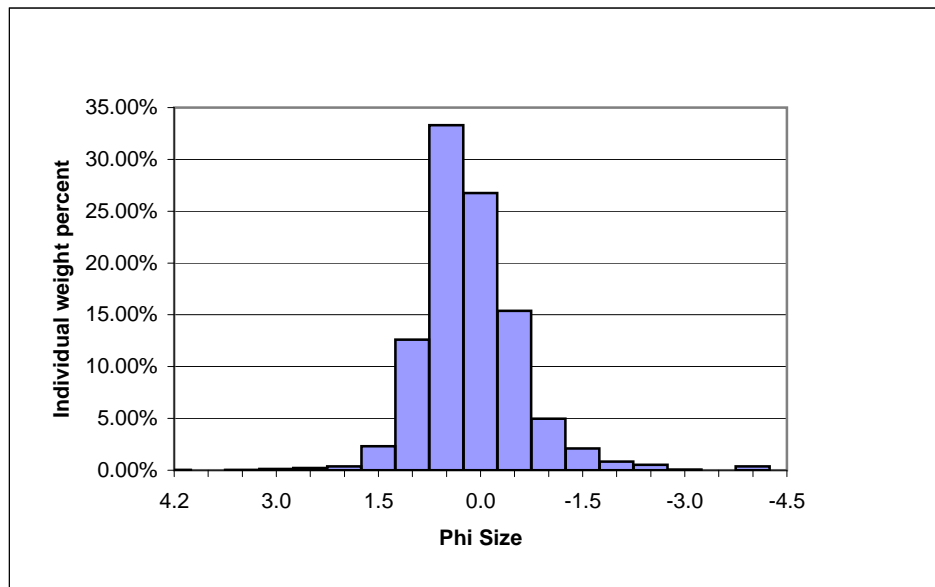
Site name Jensen spawning bar, 5 miles downstream from the Green River near Jensen, UT, streamflow-gaging station - 09261000

FieldID Transect 1-L

Date

Time

Wentworth size class	Phi Size	Diameter, mm	Raw weight, grams	Individual weight percent	Cumulative weight percent
Cobble	-4.49	22.4	0	0.00%	100.00%
Cobble	-4.00	16.0	11.34	0.37%	100.00%
Pebble	-3.49	11.2	0	0.00%	99.63%
Pebble	-3.00	8.0	1.93	0.06%	99.63%
Pebble	-2.49	5.6	15.89	0.52%	99.56%
Pebble	-2.00	4.0	25.76	0.85%	99.04%
Granule	-1.49	2.8	64.05	2.11%	98.19%
Granule	-1.00	2.0	150.59	4.96%	96.08%
Sand-VC	-0.49	1.4	467.07	15.38%	91.12%
Sand-VC	0.00	1.0	811.84	26.74%	75.74%
Sand-C	0.49	0.710	1010.62	33.29%	49.00%
Sand-C	1.00	0.500	382.9	12.61%	15.71%
Sand-M	1.49	0.355	70.19	2.31%	3.10%
Sand-M	2.00	0.250	11.7	0.39%	0.79%
Sand-F	2.47	0.180	6.77	0.22%	0.41%
Sand-F	3.00	0.125	4.08	0.13%	0.18%
Sand-VF	3.47	0.090	0.55	0.02%	0.05%
Sand-VF	4.00	0.063	0.44	0.01%	0.03%
Silt/Clay	4.24	0.053	0.49	0.02%	0.02%
<b>Total</b>			3036.21		



# Grain-Size Analysis Worksheet Version 1.0 CAW

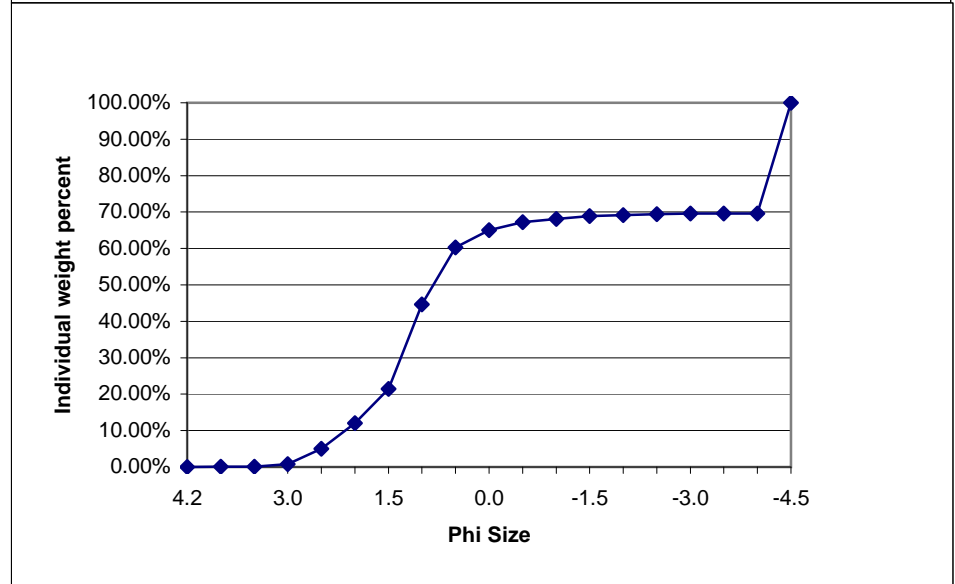
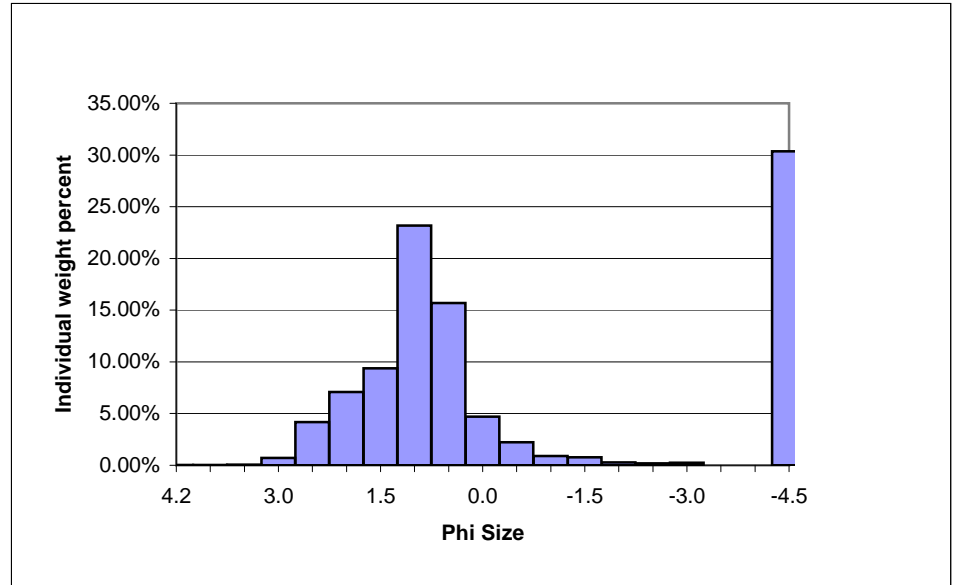
Site name Jensen spawning bar, 5 miles downstream from the Green River near Jensen, UT, streamflow-gaging station - 09261000

FieldID Transect 1-M

Date

Time

Wentworth size class	Phi Size	Diameter, mm	Raw weight, grams	Individual weight percent	Cumulative weight percent
Cobble	-4.49	22.4	1203.58	30.36%	100.00%
Cobble	-4.00	16.0	0	0.00%	69.64%
Pebble	-3.49	11.2	0	0.00%	69.64%
Pebble	-3.00	8.0	10.01	0.25%	69.64%
Pebble	-2.49	5.6	7.61	0.19%	69.39%
Pebble	-2.00	4.0	11.56	0.29%	69.19%
Granule	-1.49	2.8	30.77	0.78%	68.90%
Granule	-1.00	2.0	35.01	0.88%	68.13%
Sand-VC	-0.49	1.4	88.19	2.22%	67.24%
Sand-VC	0.00	1.0	187.03	4.72%	65.02%
Sand-C	0.49	0.710	622.5	15.70%	60.30%
Sand-C	1.00	0.500	918.28	23.16%	44.60%
Sand-M	1.49	0.355	371.27	9.37%	21.43%
Sand-M	2.00	0.250	280.45	7.07%	12.07%
Sand-F	2.47	0.180	165.08	4.16%	4.99%
Sand-F	3.00	0.125	27.8	0.70%	0.83%
Sand-VF	3.47	0.090	2.35	0.06%	0.13%
Sand-VF	4.00	0.063	1.02	0.03%	0.07%
Silt/Clay	4.24	0.053	1.63	0.04%	0.04%
<b>Total</b>			3964.14		



# Grain-Size Analysis Worksheet Version 1.0 CAW

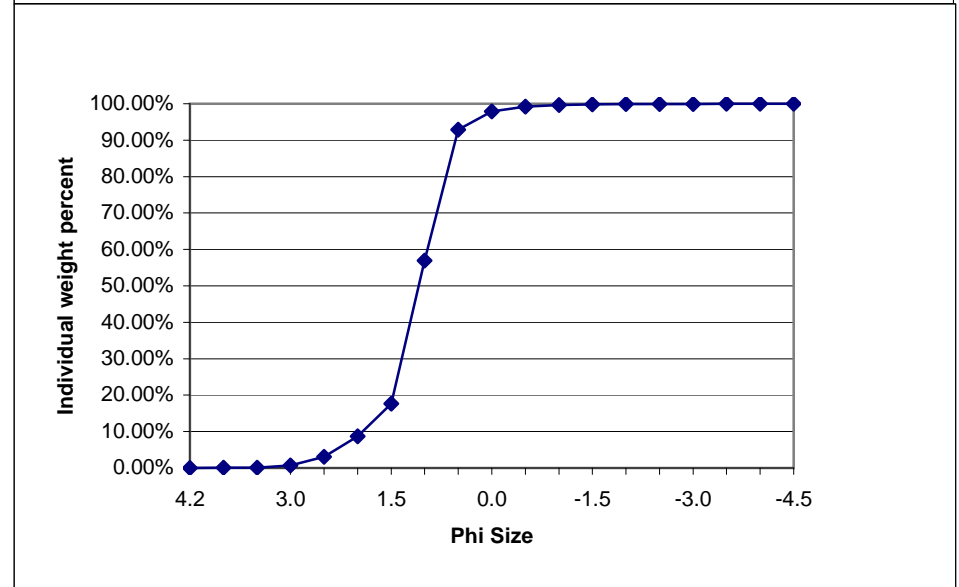
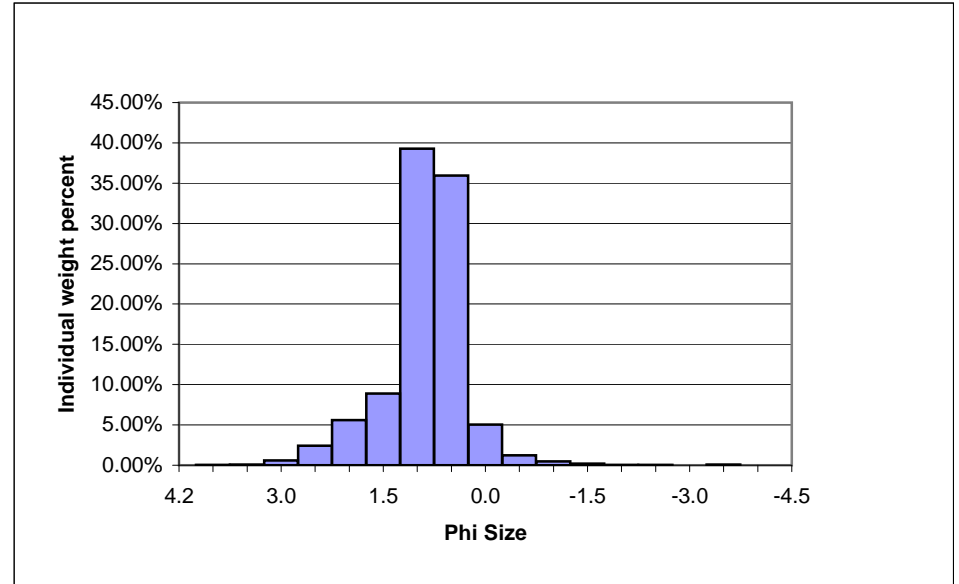
Site name Jensen spawning bar, 5 miles downstream from the Green River near Jensen, UT, streamflow-gaging station - 09261000

FieldID Transect 1-R

Date

Time

Wentworth size class	Phi Size	Diameter, mm	Raw weight, grams	Individual weight percent	Cumulative weight percent
Cobble	-4.49	22.4	0	0.00%	100.00%
Cobble	-4.00	16.0	0	0.00%	100.00%
Pebble	-3.49	11.2	2.7	0.07%	100.00%
Pebble	-3.00	8.0	0	0.00%	99.93%
Pebble	-2.49	5.6	2.04	0.05%	99.93%
Pebble	-2.00	4.0	1.92	0.05%	99.87%
Granule	-1.49	2.8	6.83	0.18%	99.82%
Granule	-1.00	2.0	17.44	0.47%	99.64%
Sand-VC	-0.49	1.4	46.41	1.24%	99.17%
Sand-VC	0.00	1.0	188.81	5.06%	97.93%
Sand-C	0.49	0.710	1340.31	35.94%	92.86%
Sand-C	1.00	0.500	1464.61	39.27%	56.92%
Sand-M	1.49	0.355	332.41	8.91%	17.65%
Sand-M	2.00	0.250	209.38	5.61%	8.73%
Sand-F	2.47	0.180	89.7	2.41%	3.12%
Sand-F	3.00	0.125	21.96	0.59%	0.71%
Sand-VF	3.47	0.090	2.59	0.07%	0.12%
Sand-VF	4.00	0.063	1.33	0.04%	0.05%
Silt/Clay	4.24	0.053	0.72	0.02%	0.02%
<b>Total</b>			3729.16		



# Grain-Size Analysis Worksheet Version 1.0 CAW

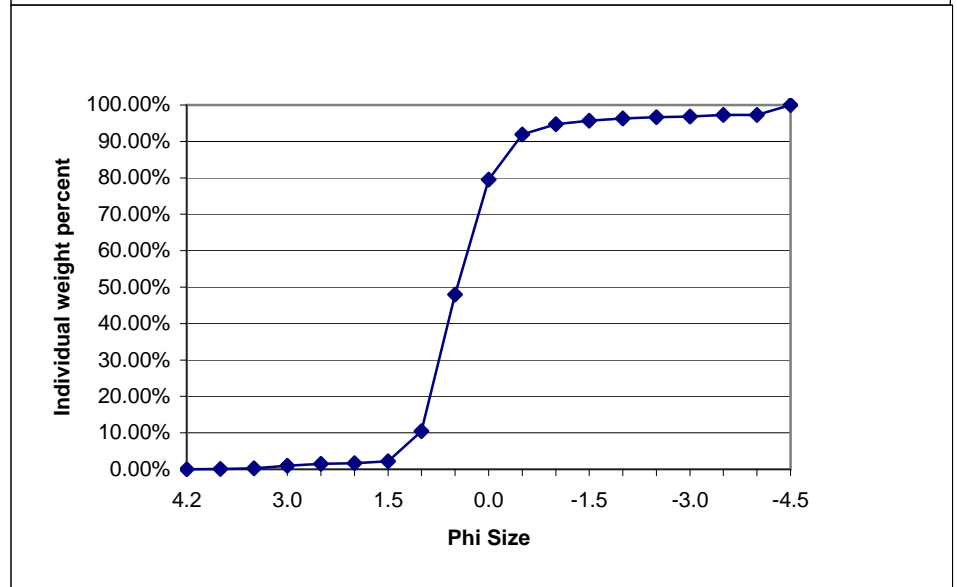
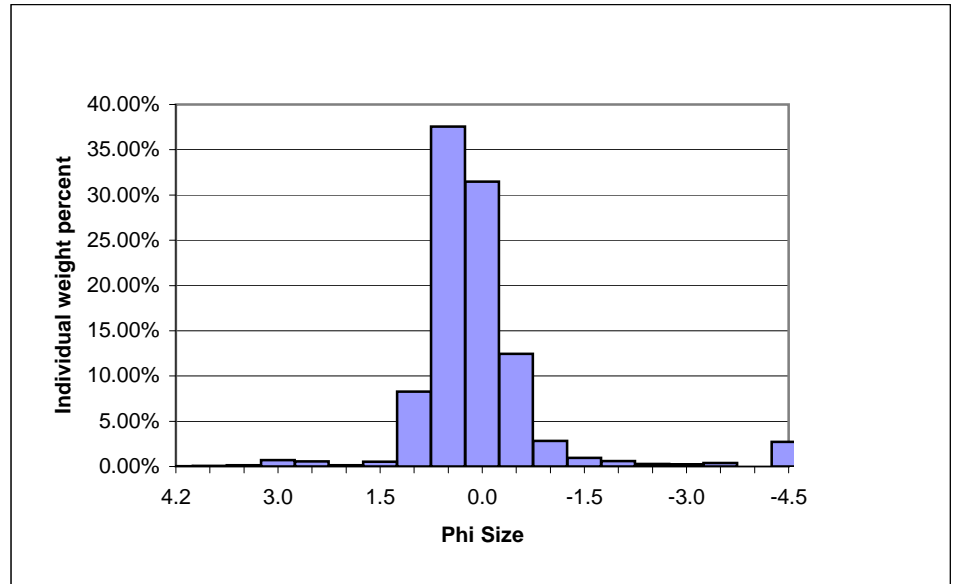
Site name Jensen spawning bar, 5 miles downstream from the Green River near Jensen, UT, streamflow-gaging station - 09261000

FieldID Transect 2-L

Date

Time

Wentworth size class	Phi Size	Diameter, mm	Raw weight, grams	Individual weight percent	Cumulative weight percent
Cobble	-4.49	22.4	93.89	2.72%	100.00%
Cobble	-4.00	16.0	0	0.00%	97.28%
Pebble	-3.49	11.2	13.96	0.40%	97.28%
Pebble	-3.00	8.0	8.53	0.25%	96.87%
Pebble	-2.49	5.6	10.23	0.30%	96.62%
Pebble	-2.00	4.0	20.71	0.60%	96.33%
Granule	-1.49	2.8	33.16	0.96%	95.73%
Granule	-1.00	2.0	97.58	2.83%	94.77%
Sand-VC	-0.49	1.4	428.92	12.44%	91.94%
Sand-VC	0.00	1.0	1085.88	31.49%	79.50%
Sand-C	0.49	0.710	1295.53	37.57%	48.00%
Sand-C	1.00	0.500	284.9	8.26%	10.43%
Sand-M	1.49	0.355	18.13	0.53%	2.17%
Sand-M	2.00	0.250	5.32	0.15%	1.64%
Sand-F	2.47	0.180	18.98	0.55%	1.49%
Sand-F	3.00	0.125	24.82	0.72%	0.94%
Sand-VF	3.47	0.090	4.7	0.14%	0.22%
Sand-VF	4.00	0.063	2.08	0.06%	0.08%
Silt/Clay	4.24	0.053	0.81	0.02%	0.02%
<b>Total</b>			<b>3448.13</b>		



# Grain-Size Analysis Worksheet Version 1.0 CAW

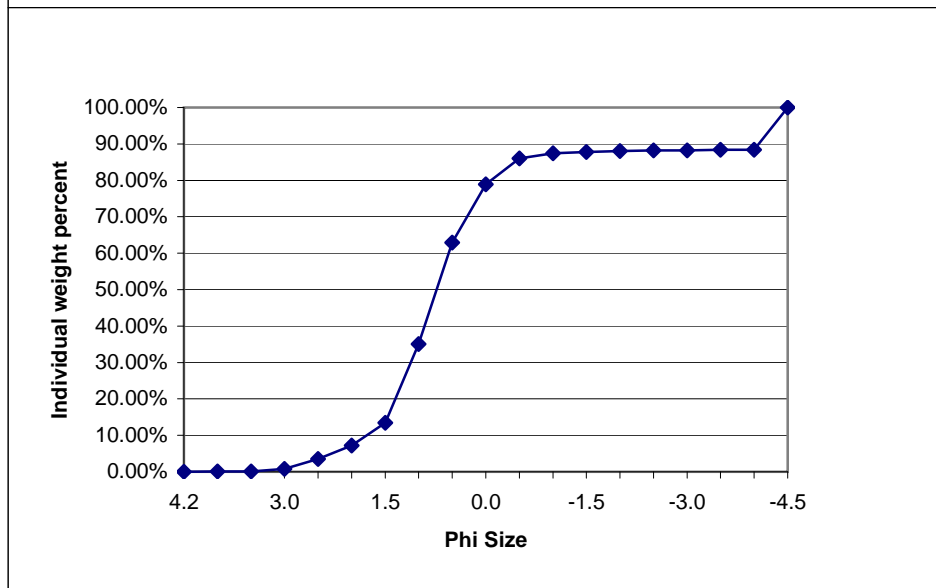
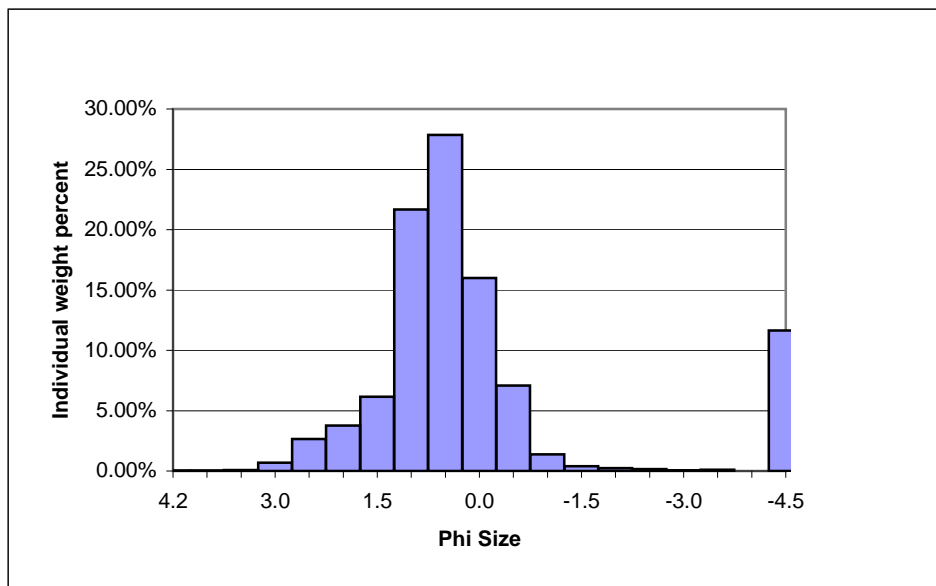
Site name Jensen spawning bar, 5 miles downstream from the Green River near Jensen, UT, streamflow-gaging station - 09261000

FieldID Transect 2-M

Date

Time

Wentworth size class	Phi Size	Diameter, mm	Raw weight, grams	Individual weight percent	Cumulative weight percent
Cobble	-4.49	22.4	421.08	11.63%	100.00%
Cobble	-4.00	16.0	0	0.00%	88.37%
Pebble	-3.49	11.2	3.62	0.10%	88.37%
Pebble	-3.00	8.0	1.94	0.05%	88.27%
Pebble	-2.49	5.6	5.74	0.16%	88.21%
Pebble	-2.00	4.0	8.53	0.24%	88.06%
Granule	-1.49	2.8	14.48	0.40%	87.82%
Granule	-1.00	2.0	50.01	1.38%	87.42%
Sand-VC	-0.49	1.4	256.5	7.09%	86.04%
Sand-VC	0.00	1.0	579.38	16.01%	78.95%
Sand-C	0.49	0.710	1008.64	27.86%	62.95%
Sand-C	1.00	0.500	784.89	21.68%	35.08%
Sand-M	1.49	0.355	222.93	6.16%	13.40%
Sand-M	2.00	0.250	136.36	3.77%	7.24%
Sand-F	2.47	0.180	95.95	2.65%	3.48%
Sand-F	3.00	0.125	25.43	0.70%	0.83%
Sand-VF	3.47	0.090	2.59	0.07%	0.12%
Sand-VF	4.00	0.063	1.08	0.03%	0.05%
Silt/Clay	4.24	0.053	0.79	0.02%	0.02%
<b>Total</b>			<b>3619.94</b>		



# Grain-Size Analysis Worksheet Version 1.0 CAW

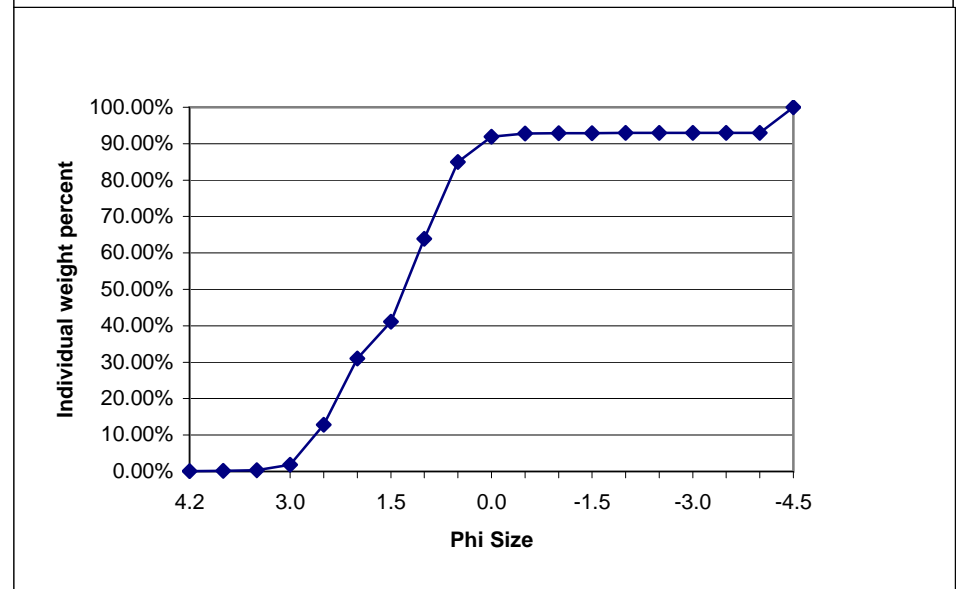
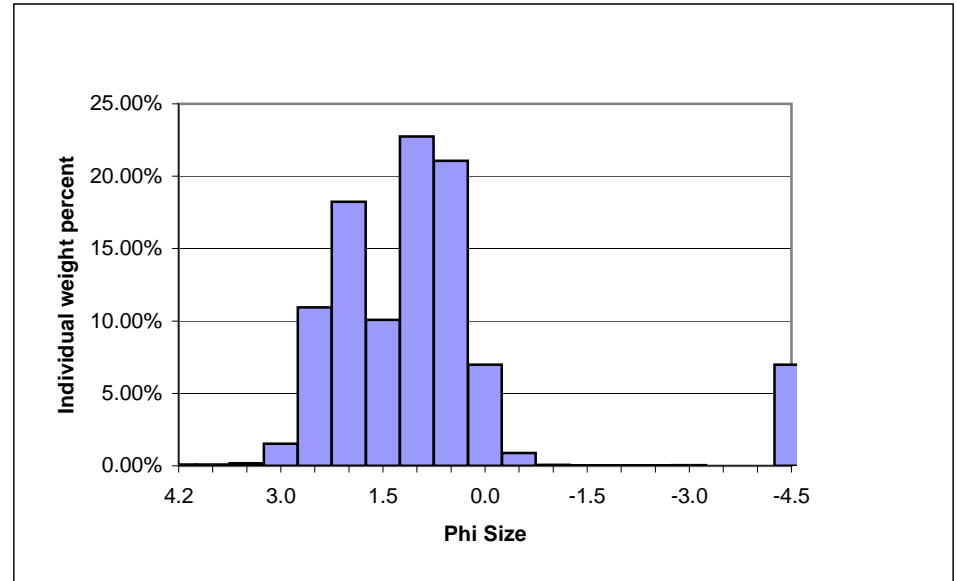
Site name Jensen spawning bar, 5 miles downstream from the Green River near Jensen, UT, streamflow-gaging station - 09261000

FieldID Transect 2-R

Date

Time

Wentworth size class	Phi Size	Diameter, mm	Raw weight, grams	Individual weight percent	Cumulative weight percent
Cobble	-4.49	22.4	223.88	6.99%	100.00%
Cobble	-4.00	16.0	0	0.00%	93.01%
Pebble	-3.49	11.2	0	0.00%	93.01%
Pebble	-3.00	8.0	1.32	0.04%	93.01%
Pebble	-2.49	5.6	1.05	0.03%	92.97%
Pebble	-2.00	4.0	1.02	0.03%	92.94%
Granule	-1.49	2.8	0.91	0.03%	92.90%
Granule	-1.00	2.0	1.97	0.06%	92.88%
Sand-VC	-0.49	1.4	28.48	0.89%	92.81%
Sand-VC	0.00	1.0	223.42	6.98%	91.92%
Sand-C	0.49	0.710	674.81	21.07%	84.95%
Sand-C	1.00	0.500	728.23	22.74%	63.88%
Sand-M	1.49	0.355	322.95	10.08%	41.14%
Sand-M	2.00	0.250	583.92	18.23%	31.05%
Sand-F	2.47	0.180	350.36	10.94%	12.82%
Sand-F	3.00	0.125	48.55	1.52%	1.88%
Sand-VF	3.47	0.090	5.9	0.18%	0.37%
Sand-VF	4.00	0.063	2.89	0.09%	0.18%
Silt/Clay	4.24	0.053	2.91	0.09%	0.09%
<b>Total</b>			<b>3202.57</b>		



# Grain-Size Analysis Worksheet Version 1.0 CAW

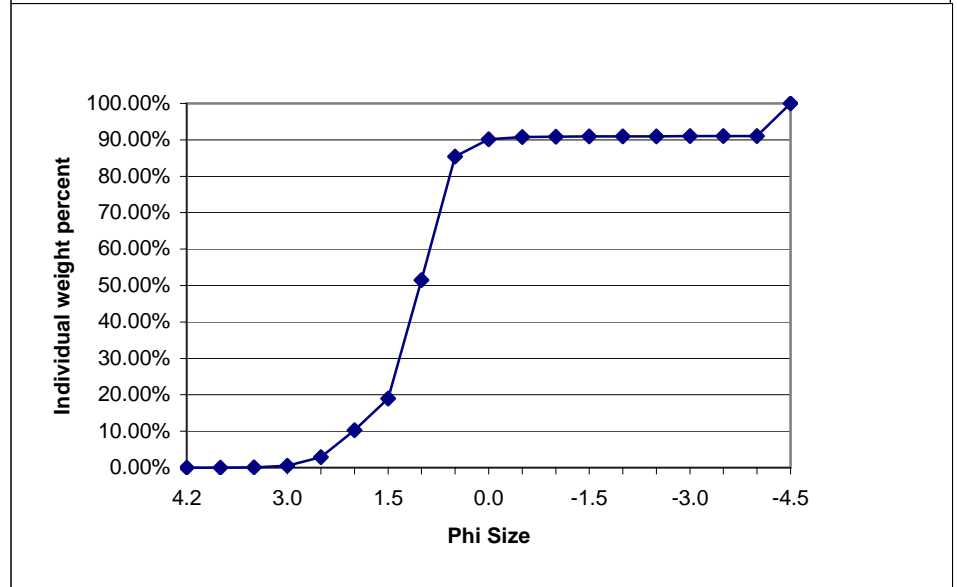
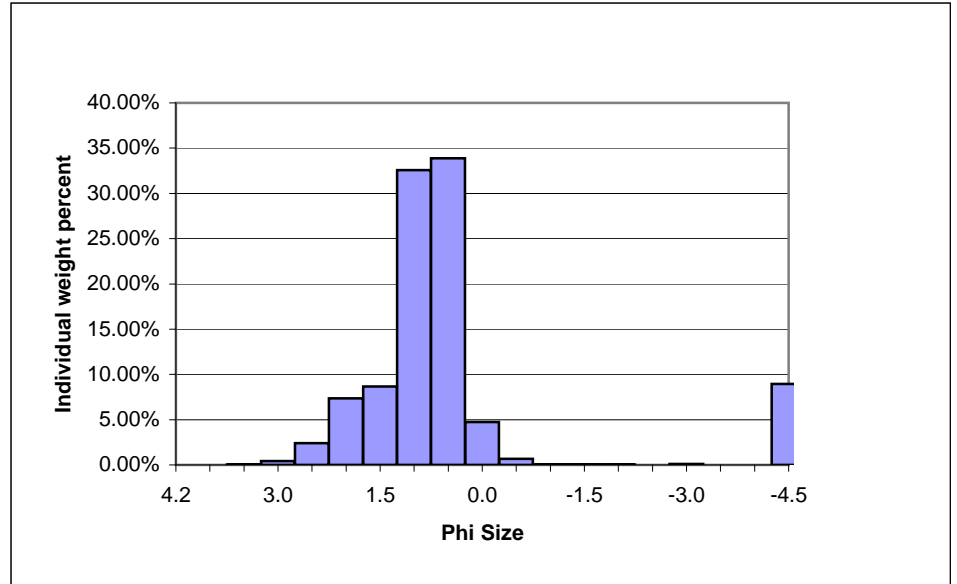
Site name Jensen spawning bar, 5 miles downstream from the Green River near Jensen, UT, streamflow-gaging station - 09261000

FieldID Transect 3-L

Date

Time

Wentworth size class	Phi Size	Diameter, mm	Raw weight, grams	Individual weight percent	Cumulative weight percent
Cobble	-4.49	22.4	275.84	8.94%	100.00%
Cobble	-4.00	16.0	0	0.00%	91.06%
Pebble	-3.49	11.2	0	0.00%	91.06%
Pebble	-3.00	8.0	2.93	0.09%	91.06%
Pebble	-2.49	5.6	0.33	0.01%	90.97%
Pebble	-2.00	4.0	0.62	0.02%	90.95%
Granule	-1.49	2.8	1.18	0.04%	90.93%
Granule	-1.00	2.0	2.52	0.08%	90.90%
Sand-VC	-0.49	1.4	21.03	0.68%	90.81%
Sand-VC	0.00	1.0	146.01	4.73%	90.13%
Sand-C	0.49	0.710	1045.12	33.87%	85.40%
Sand-C	1.00	0.500	1005.5	32.59%	51.53%
Sand-M	1.49	0.355	267.58	8.67%	18.94%
Sand-M	2.00	0.250	227.24	7.36%	10.27%
Sand-F	2.47	0.180	74.36	2.41%	2.91%
Sand-F	3.00	0.125	13.4	0.43%	0.50%
Sand-VF	3.47	0.090	1.13	0.04%	0.06%
Sand-VF	4.00	0.063	0.44	0.01%	0.02%
Silt/Clay	4.24	0.053	0.33	0.01%	0.01%
<b>Total</b>			<b>3085.56</b>		



# Grain-Size Analysis Worksheet Version 1.0 CAW

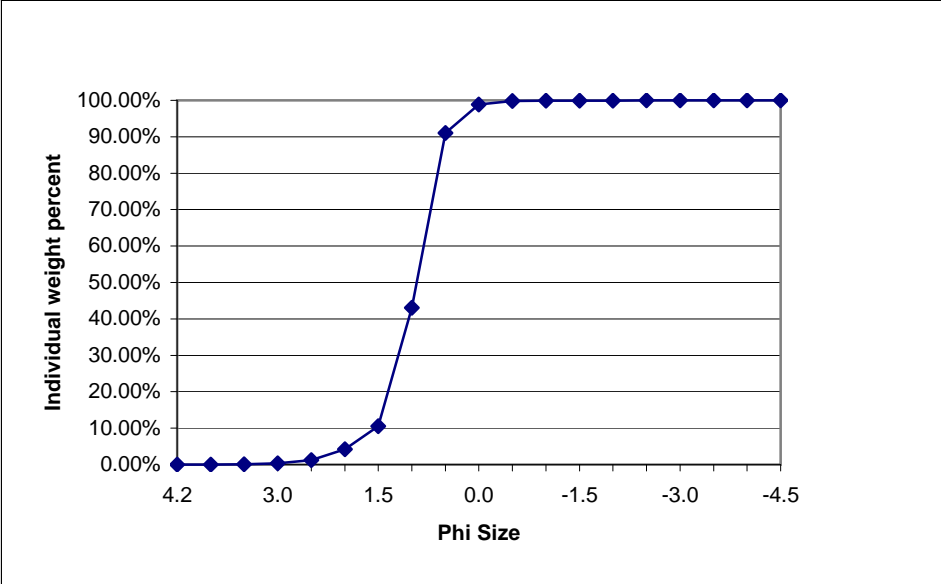
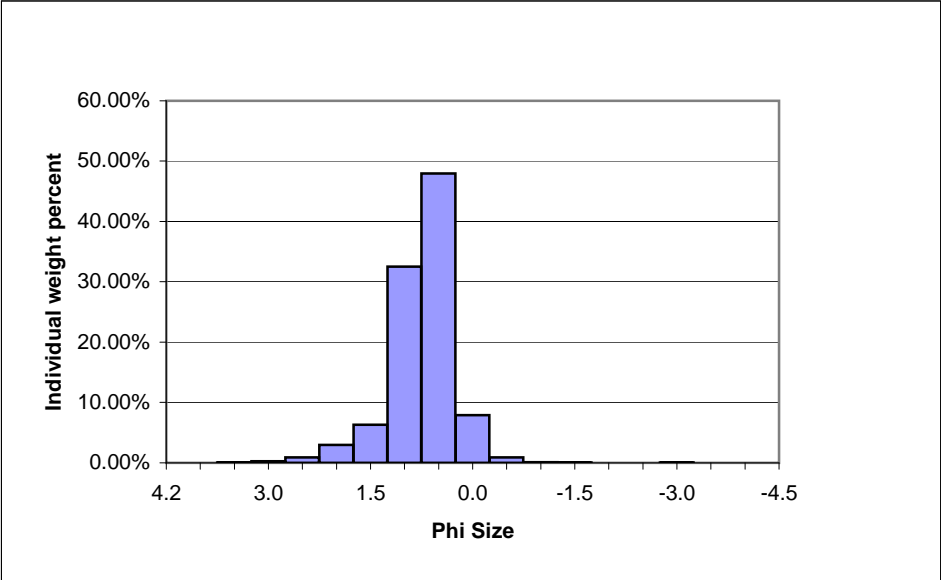
Site name Jensen spawning bar, 5 miles downstream from the Green River near Jensen, UT, streamflow-gaging station - 09261000

FieldID Transect 3-M

Date

Time

Wentworth size class	Phi Size	Diameter, mm	Raw weight, grams	Individual weight percent	Cumulative weight percent
Cobble	-4.49	22.4	0	0.00%	100.00%
Cobble	-4.00	16.0	0	0.00%	100.00%
Pebble	-3.49	11.2	0	0.00%	100.00%
Pebble	-3.00	8.0	1.1	0.04%	100.00%
Pebble	-2.49	5.6	0.29	0.01%	99.96%
Pebble	-2.00	4.0	0	0.00%	99.95%
Granule	-1.49	2.8	1.13	0.04%	99.95%
Granule	-1.00	2.0	3	0.11%	99.91%
Sand-VC	-0.49	1.4	24.76	0.91%	99.80%
Sand-VC	0.00	1.0	214.26	7.88%	98.89%
Sand-C	0.49	0.710	1303.49	47.96%	91.00%
Sand-C	1.00	0.500	884.04	32.52%	43.05%
Sand-M	1.49	0.355	171.91	6.32%	10.52%
Sand-M	2.00	0.250	80.47	2.96%	4.20%
Sand-F	2.47	0.180	25.22	0.93%	1.24%
Sand-F	3.00	0.125	6.91	0.25%	0.31%
Sand-VF	3.47	0.090	0.76	0.03%	0.06%
Sand-VF	4.00	0.063	0.38	0.01%	0.03%
Silt/Clay	4.24	0.053	0.41	0.02%	0.02%
<b>Total</b>			2718.13		





# Grain-Size Analysis Worksheet Version 1.0 CAW

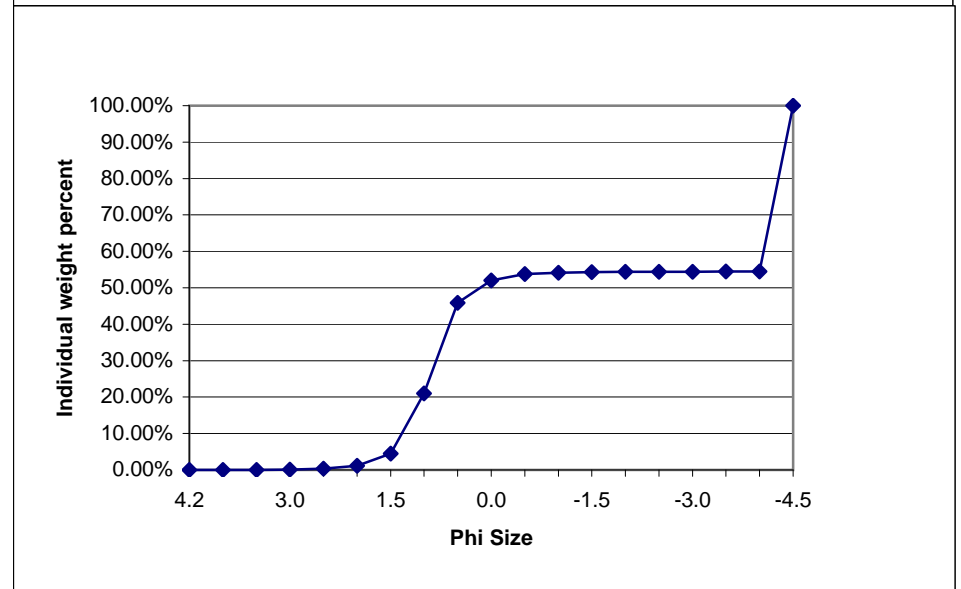
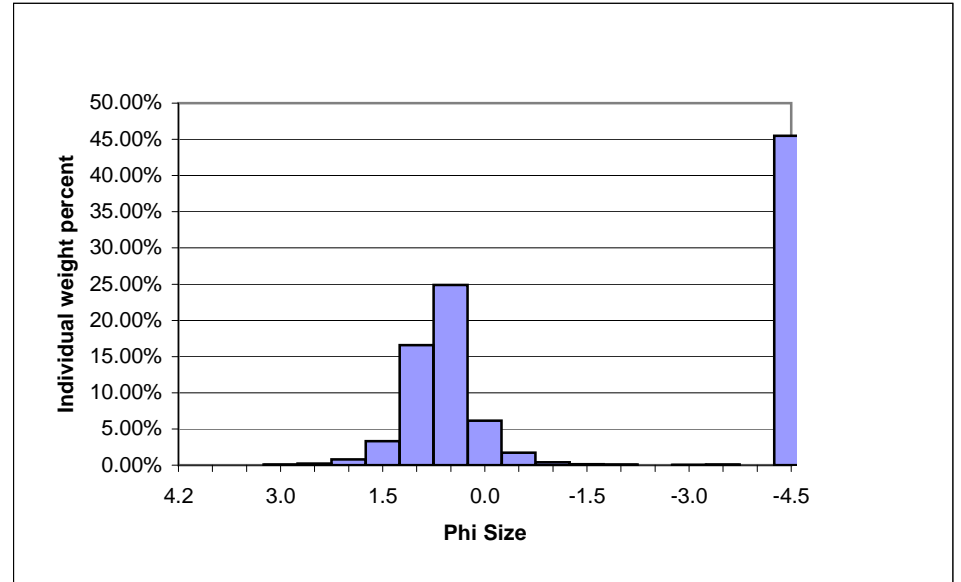
Site name Jensen spawning bar, 5 miles downstream from the Green River near Jensen, UT, streamflow-gaging station - 09261000

FieldID Transect 3-R

Date

Time

Wentworth size class	Phi Size	Diameter, mm	Raw weight, grams	Individual weight percent	Cumulative weight percent
Cobble	-4.49	22.4	1717.08	45.49%	100.00%
Cobble	-4.00	16.0	0	0.00%	54.51%
Pebble	-3.49	11.2	3.66	0.10%	54.51%
Pebble	-3.00	8.0	0.89	0.02%	54.41%
Pebble	-2.49	5.6	0.38	0.01%	54.39%
Pebble	-2.00	4.0	2.68	0.07%	54.38%
Granule	-1.49	2.8	5.75	0.15%	54.31%
Granule	-1.00	2.0	14.71	0.39%	54.16%
Sand-VC	-0.49	1.4	65.28	1.73%	53.77%
Sand-VC	0.00	1.0	231.82	6.14%	52.04%
Sand-C	0.49	0.710	938.72	24.87%	45.90%
Sand-C	1.00	0.500	625.88	16.58%	21.03%
Sand-M	1.49	0.355	125.69	3.33%	4.44%
Sand-M	2.00	0.250	30.3	0.80%	1.11%
Sand-F	2.47	0.180	7.88	0.21%	0.31%
Sand-F	3.00	0.125	3.14	0.08%	0.10%
Sand-VF	3.47	0.090	0.39	0.01%	0.02%
Sand-VF	4.00	0.063	0.21	0.01%	0.01%
Silt/Clay	4.24	0.053	0.16	0.00%	0.00%
<b>Total</b>			<b>3774.62</b>		



# Grain-Size Analysis Worksheet Version 1.0 CAW

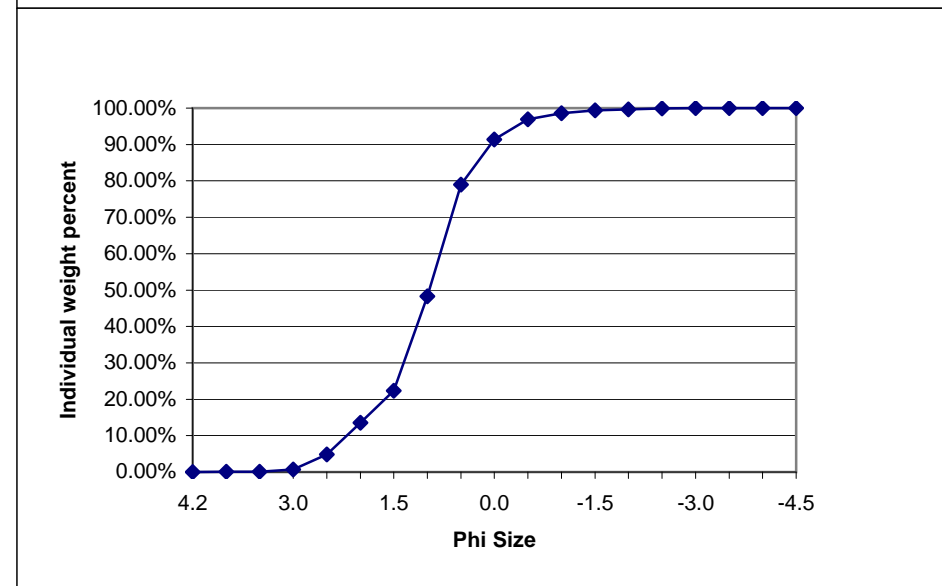
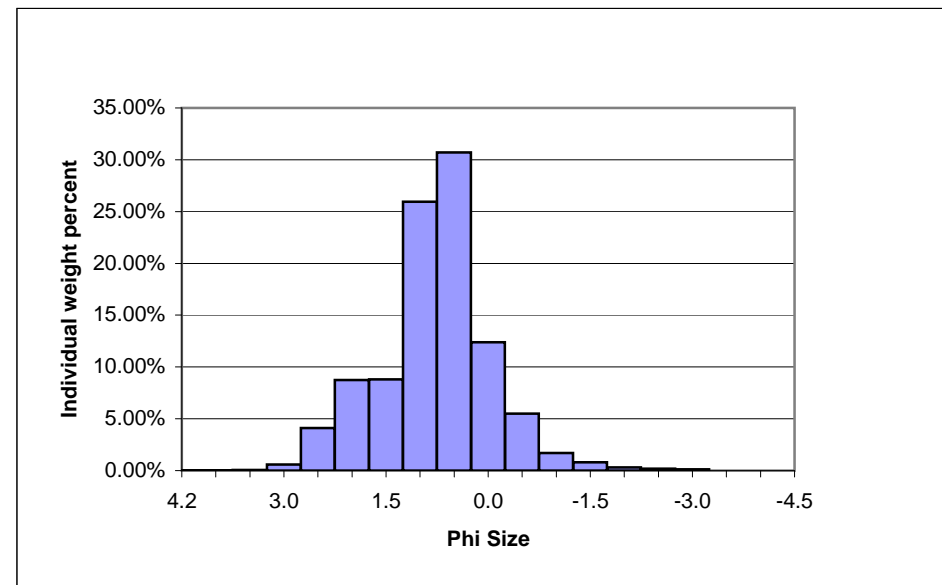
Site name Jensen spawning bar, 5 miles downstream from the Green River near Jensen, UT, streamflow-gaging station - 09261000

FieldID Main-channel sample 4.1-M

Date

Time

Wentworth size class	Phi Size	Diameter, mm	Raw weight, grams	Individual weight percent	Cumulative weight percent
Cobble	-4.49	22.4	0	0.00%	100.00%
Cobble	-4.00	16.0	0	0.00%	100.00%
Pebble	-3.49	11.2	0	0.00%	100.00%
Pebble	-3.00	8.0	3.66	0.12%	100.00%
Pebble	-2.49	5.6	5.71	0.19%	99.88%
Pebble	-2.00	4.0	9.3	0.31%	99.69%
Granule	-1.49	2.8	24.12	0.79%	99.39%
Granule	-1.00	2.0	51.87	1.71%	98.59%
Sand-VC	-0.49	1.4	166.97	5.50%	96.88%
Sand-VC	0.00	1.0	376.53	12.39%	91.39%
Sand-C	0.49	0.710	932.82	30.70%	78.99%
Sand-C	1.00	0.500	787.89	25.93%	48.29%
Sand-M	1.49	0.355	267.88	8.82%	22.36%
Sand-M	2.00	0.250	265.24	8.73%	13.54%
Sand-F	2.47	0.180	124.85	4.11%	4.81%
Sand-F	3.00	0.125	17.9	0.59%	0.70%
Sand-VF	3.47	0.090	1.43	0.05%	0.11%
Sand-VF	4.00	0.063	0.83	0.03%	0.06%
Silt/Clay	4.24	0.053	1.11	0.04%	0.04%
<b>Total</b>			3038.11		



# Grain-Size Analysis Worksheet Version 1.0 CAW

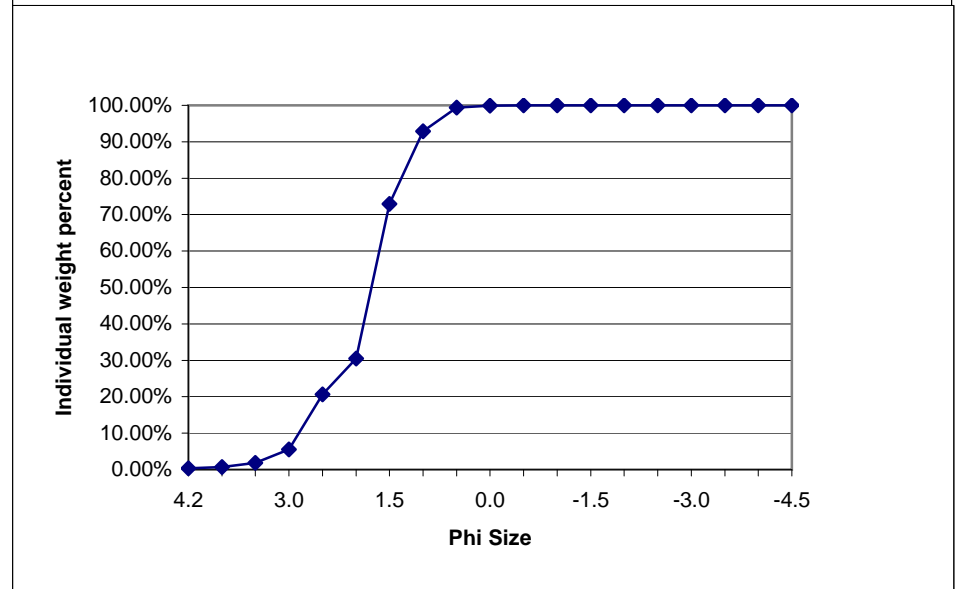
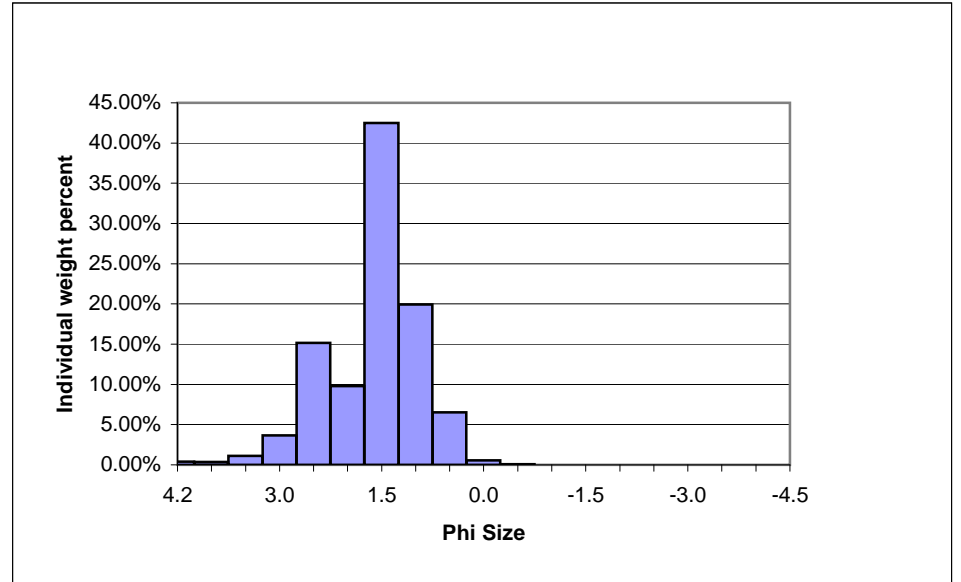
Site name Jensen spawning bar, 5 miles downstream from the Green River near Jensen, UT, streamflow-gaging station - 09261000

FieldID Sand Secondary Channel S 2dC

Date

Time

Wentworth size class	Phi Size	Diameter, mm	Raw weight, grams	Individual weight percent	Cumulative weight percent
Cobble	-4.49	22.4	0	0.00%	100.00%
Cobble	-4.00	16.0	0	0.00%	100.00%
Pebble	-3.49	11.2	0	0.00%	100.00%
Pebble	-3.00	8.0	0	0.00%	100.00%
Pebble	-2.49	5.6	0	0.00%	100.00%
Pebble	-2.00	4.0	0	0.00%	100.00%
Granule	-1.49	2.8	0.12	0.00%	100.00%
Granule	-1.00	2.0	0.1	0.00%	100.00%
Sand-VC	-0.49	1.4	2.47	0.07%	99.99%
Sand-VC	0.00	1.0	20.55	0.56%	99.93%
Sand-C	0.49	0.710	239.05	6.51%	99.37%
Sand-C	1.00	0.500	731.18	19.92%	92.86%
Sand-M	1.49	0.355	1559.59	42.48%	72.94%
Sand-M	2.00	0.250	359.33	9.79%	30.45%
Sand-F	2.47	0.180	556.21	15.15%	20.67%
Sand-F	3.00	0.125	133.92	3.65%	5.52%
Sand-VF	3.47	0.090	41.15	1.12%	1.87%
Sand-VF	4.00	0.063	13.52	0.37%	0.75%
Silt/Clay	4.24	0.053	13.9	0.38%	0.38%
<b>Total</b>			<b>3671.09</b>		



# Grain-Size Analysis Worksheet Version 1.0 CAW

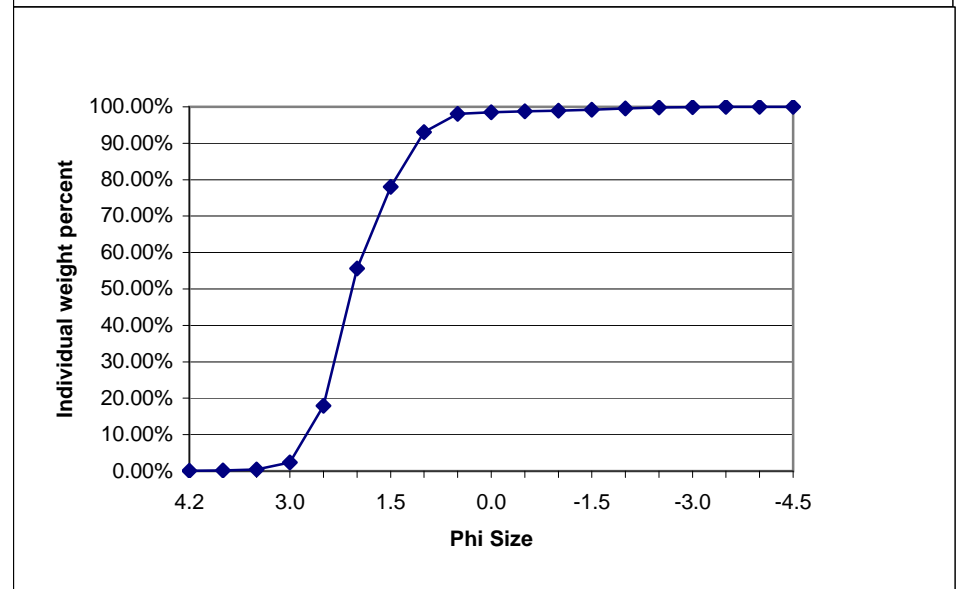
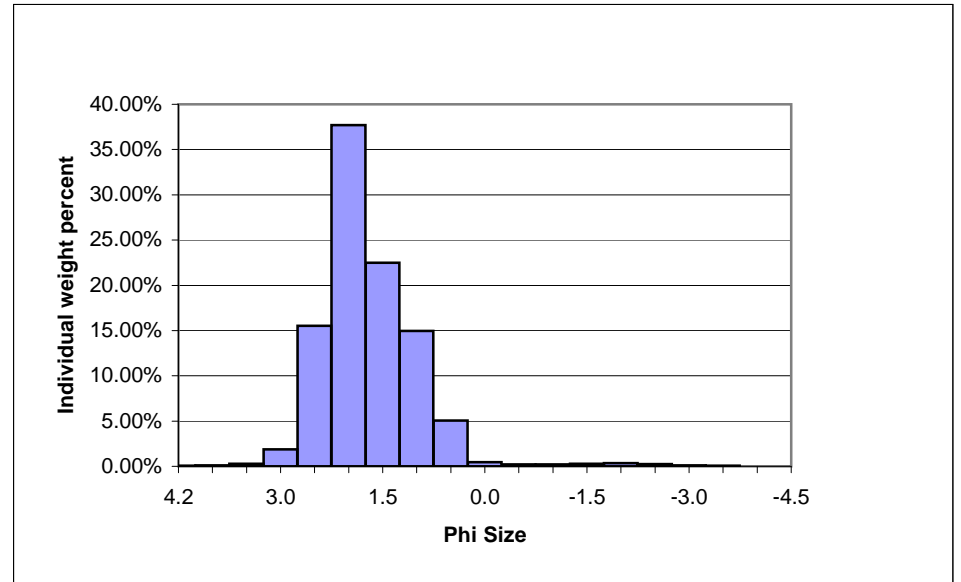
Site name Jensen spawning bar, 5 miles downstream from the Green River near Jensen, UT, streamflow-gaging station - 09261000

FieldID Transect 6-L

Date

Time

Wentworth size class	Phi Size	Diameter, mm	Raw weight, grams	Individual weight percent	Cumulative weight percent
Cobble	-4.49	22.4	0	0.00%	100.00%
Cobble	-4.00	16.0	0	0.00%	100.00%
Pebble	-3.49	11.2	2.04	0.07%	100.00%
Pebble	-3.00	8.0	2.44	0.09%	99.93%
Pebble	-2.49	5.6	6.66	0.24%	99.84%
Pebble	-2.00	4.0	9.55	0.35%	99.59%
Granule	-1.49	2.8	7.98	0.29%	99.25%
Granule	-1.00	2.0	5.83	0.21%	98.95%
Sand-VC	-0.49	1.4	5.56	0.20%	98.74%
Sand-VC	0.00	1.0	12.57	0.46%	98.54%
Sand-C	0.49	0.710	138.41	5.05%	98.08%
Sand-C	1.00	0.500	410.14	14.96%	93.03%
Sand-M	1.49	0.355	616.52	22.49%	78.07%
Sand-M	2.00	0.250	1033.43	37.69%	55.58%
Sand-F	2.47	0.180	425.69	15.53%	17.89%
Sand-F	3.00	0.125	51.7	1.89%	2.36%
Sand-VF	3.47	0.090	7.71	0.28%	0.48%
Sand-VF	4.00	0.063	3.23	0.12%	0.19%
Silt/Clay	4.24	0.053	2.11	0.08%	0.08%
<b>Total</b>			<b>2741.57</b>		



# Grain-Size Analysis Worksheet Version 1.0 CAW

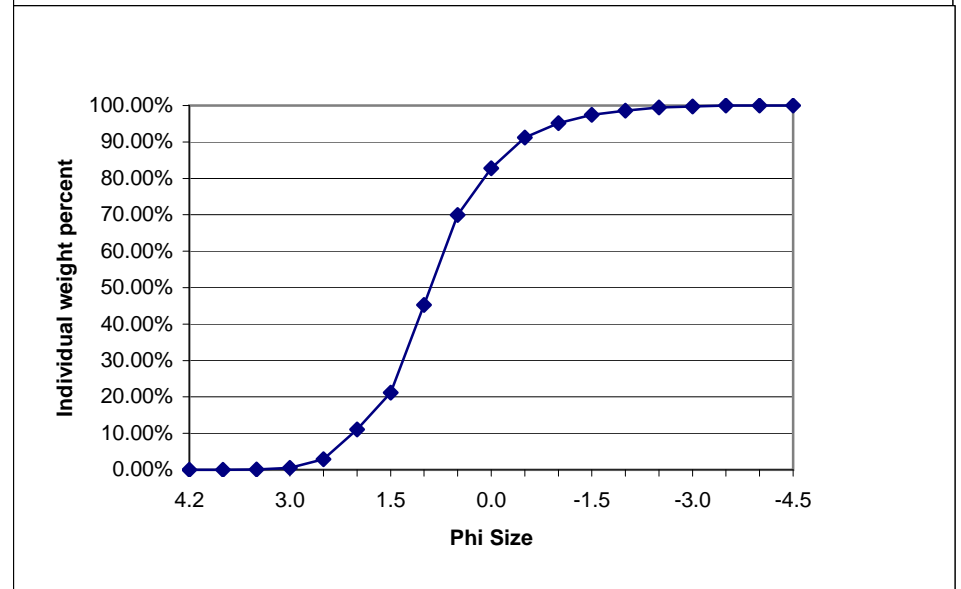
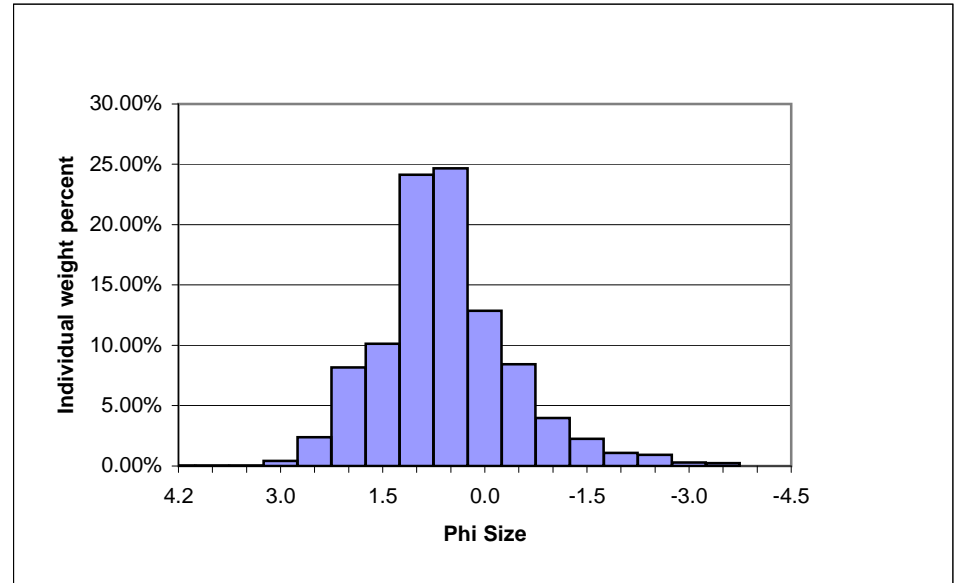
Site name Jensen spawning bar, 5 miles downstream from the Green River near Jensen, UT, streamflow-gaging station - 09261000

FieldID Transect 6-M

Date

Time

Wentworth size class	Phi Size	Diameter, mm	Raw weight, grams	Individual weight percent	Cumulative weight percent
Cobble	-4.49	22.4	0	0.00%	100.00%
Cobble	-4.00	16.0	0	0.00%	100.00%
Pebble	-3.49	11.2	5.56	0.23%	100.00%
Pebble	-3.00	8.0	6.69	0.28%	99.77%
Pebble	-2.49	5.6	21.79	0.92%	99.48%
Pebble	-2.00	4.0	26.06	1.10%	98.57%
Granule	-1.49	2.8	53.78	2.27%	97.47%
Granule	-1.00	2.0	94.15	3.97%	95.20%
Sand-VC	-0.49	1.4	200.06	8.43%	91.24%
Sand-VC	0.00	1.0	305.08	12.85%	82.81%
Sand-C	0.49	0.710	585.52	24.67%	69.95%
Sand-C	1.00	0.500	572.64	24.13%	45.29%
Sand-M	1.49	0.355	240.37	10.13%	21.16%
Sand-M	2.00	0.250	193.6	8.16%	11.03%
Sand-F	2.47	0.180	56.53	2.38%	2.88%
Sand-F	3.00	0.125	10.14	0.43%	0.49%
Sand-VF	3.47	0.090	0.87	0.04%	0.07%
Sand-VF	4.00	0.063	0.34	0.01%	0.03%
Silt/Clay	4.24	0.053	0.38	0.02%	0.02%
<b>Total</b>			2373.56		



# Grain-Size Analysis Worksheet Version 1.0 CAW

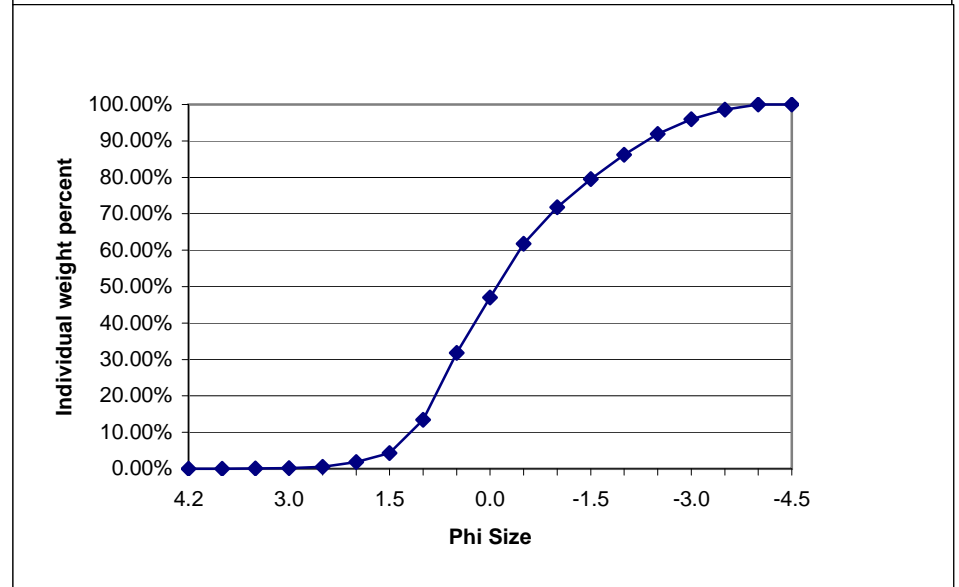
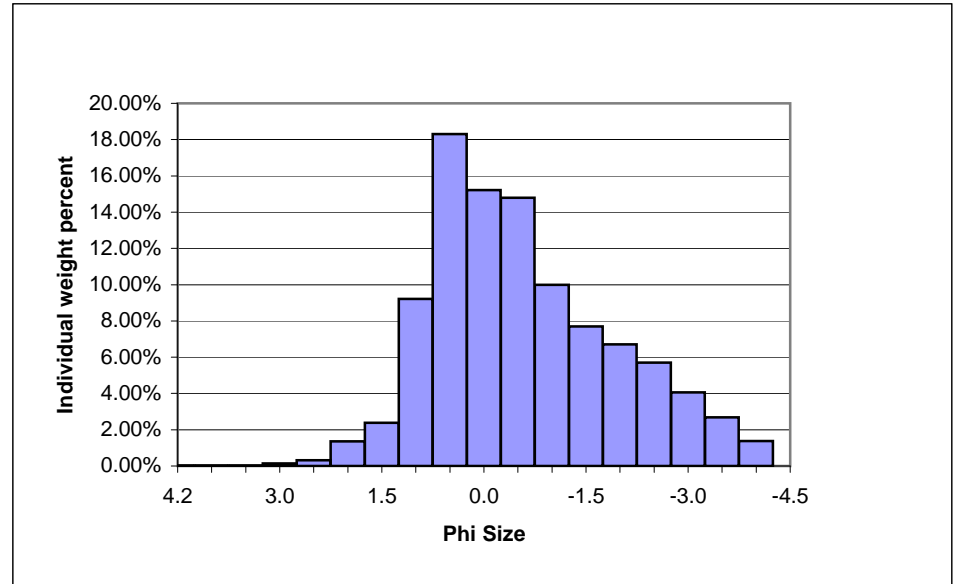
Site name Jensen spawning bar, 5 miles downstream from the Green River near Jensen, UT, streamflow-gaging station - 09261000

FieldID Transect 6-R

Date

Time

Wentworth size class	Phi Size	Diameter, mm	Raw weight, grams	Individual weight percent	Cumulative weight percent
Cobble	-4.49	22.4	0	0.00%	100.00%
Cobble	-4.00	16.0	43.3	1.37%	100.00%
Pebble	-3.49	11.2	84.81	2.68%	98.63%
Pebble	-3.00	8.0	128.44	4.06%	95.95%
Pebble	-2.49	5.6	180.58	5.71%	91.89%
Pebble	-2.00	4.0	212.12	6.70%	86.19%
Granule	-1.49	2.8	243.31	7.69%	79.48%
Granule	-1.00	2.0	316.14	9.99%	71.80%
Sand-VC	-0.49	1.4	468.33	14.80%	61.81%
Sand-VC	0.00	1.0	481.49	15.22%	47.01%
Sand-C	0.49	0.710	579.31	18.31%	31.79%
Sand-C	1.00	0.500	291.54	9.21%	13.48%
Sand-M	1.49	0.355	75.56	2.39%	4.27%
Sand-M	2.00	0.250	43.2	1.37%	1.88%
Sand-F	2.47	0.180	10.26	0.32%	0.52%
Sand-F	3.00	0.125	4.7	0.15%	0.19%
Sand-VF	3.47	0.090	0.68	0.02%	0.05%
Sand-VF	4.00	0.063	0.41	0.01%	0.02%
Silt/Clay	4.24	0.053	0.38	0.01%	0.01%
<b>Total</b>			3164.56		



Gunnison River near Grand Junction, CO, Left Gravel Bar at Gun-1,			
Wolman Pebble-Count Measuremen			
Remarks -- Cobble bar, left bank ~ 250' upstre			
[Assume: Sand or Coarse Sand = 1mm; Medium Sand = 0.25mm; Fine Sand = 0			
Silt or Mud = 0.06r			
Meas	Tape	2003	
No.	Sta	b-Axi	
	(ft)	(mm)	
1	1	63	
2	2	85	
3	3	30	
4	4	40	
5	5	33	
6	6	29	
7	7	54	
8	8	31	
9	9	32	
10	10	62	
11	11	41	
12	12	30	
13	13	44	
14	14	14	
15	15	37	
16	16	36	
17	17	97	
18	18	39	
19	19	41	
20	20	94	
21	21	117	
22	22	29	
23	23	112	
24	24	45	
25	25	48	
26	26	125	
27	27	113	
28	28	65	
29	29	19	
30	30	112	
31	31	145	
32	32	71	
33	33	35	
34	34	141	
35	35	58	
36	36	118	
37	37	49	
38	38	69	
39	39	93	
40	40	128	
41	41	90	
42	42	35	
43	43	125	
44	44	190	
45	45	115	
46	46	196	
47	47	119	
48	48	146	
49	49	101	
50	50	39	
51	51	38	
52	52	117	
53	53	127	
54	54	75	
55	55	58	
56	56	118	
57	57	79	
58	58	124	
59	59	117	
60	60	105	
61	61	114	
62	62	68	
63	63	136	
64	64	56	

65	65	59					
66	66	64					
67	67	124					
68	68	93					
69	69	42					
70	70	79					
71	71	81					
72	72	75					
73	73	67					
74	74	63					
75	75	80					
76	76	20					
77	77	114					
78	78	108					
79	79	83					
80	80	47					
81	81	108					
82	82	104					
83	83	53					
84	84	85					
85	85	128					
86	86	14					
87	87	109					
88	88	30					
89	89	53					
90	90	108					
91	91	58					
92	92	127					
93	93	104					
94	94	160					
95	95	132					
96	96	142					
97	97	118					
98	98	42					
99	99	49					
100	100	28					
<b>Gunnison River near Grand Junction, CO, Left Gravel Bar at Gun-1,</b>							
<b>Sediment-Size Distrib</b>							
	Percen	Sediment					
	til	partic					
	(fine	siz					
	than,	(mm)					
	0	14.0					
	1	14.0					
	5	29.0					
	10	30.9					
	16	36.8					
	20	39.8					
	25	43.5					
	30	49.0					
	40	62.6					
	50	<b>77.0</b>					
	60	93.4					
	70	109.9					
	75	114.3					
	80	118.0					
	84	124.0					
	90	128.0					
	95	142.2					
	99	190.1					
	100	196.0					
	n	100					
	Mean	80.63					
	Std Dv	40.9275					
	Skew	0.39528					
	Kurt	-0.5228					
	sigma c	1.83464					
	Gradatic	1.83464					
	Geom Ave	67.5882					

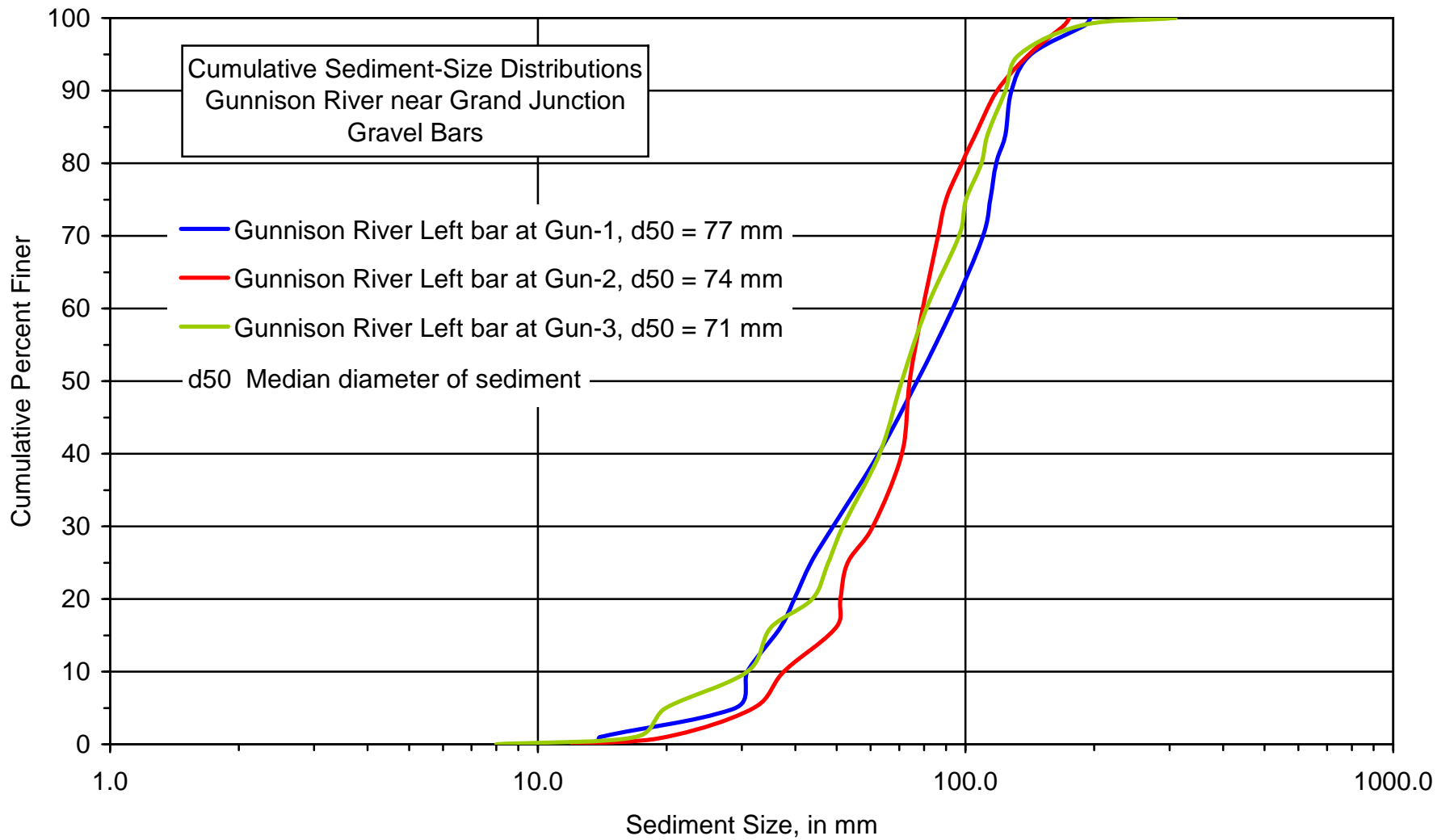


Gunnison River near Grand Junction, CO, Left Gravel Bar at Gun-2					
Wolman Pebble-Count Measuremen					
Remarks -- Cobble bar, left bank ~ 200' upstre					
[Assume: Sand or Coarse Sand = 1mm; Medium Sand = 0.25mm; Fine Sand = 0					
Silt or Mud = 0.06r					
Meas	Tape	2003			
No.	Sta	b-Axi			
	(ft)	(mm)			
1	1	25			
2	2	31			
3	3	32			
4	4	32			
5	5	50			
6	6	60			
7	7	34			
8	8	72			
9	9	87			
10	10	71			
11	11	12			
12	12	51			
13	13	71			
14	14	90			
15	15	78			
16	16	62			
17	17	34			
18	18	52			
19	19	118			
20	20	117			
21	21	53			
22	22	89			
23	23	74			
24	24	81			
25	25	57			
26	26	52			
27	27	73			
28	28	50			
29	29	175			
30	30	62			
31	31	64			
32	32	160			
33	33	83			
34	34	48			
35	35	98			
36	36	101			
37	37	67			
38	38	98			
39	39	78			
40	40	105			
41	41	89			
42	42	77			
43	43	128			
44	44	72			
45	45	67			
46	46	52			
47	47	71			
48	48	90			
49	49	124			
50	50	75			
51	51	72			
52	52	96			
53	53	75			
54	54	53			
55	55	79			
56	56	92			
57	57	48			
58	58	53			
59	59	108			
60	60	63			
61	61	53			
62	62	170			
63	63	125			
64	64	82			

65	65	80					
66	66	95					
67	67	110					
68	68	98					
69	69	45					
70	70	87					
71	71	79					
72	72	69					
73	73	71					
74	74	61					
75	75	50					
76	76	74					
77	77	38					
78	78	112					
79	79	118					
80	80	72					
81	81	65					
82	82	73					
83	83	80					
84	84	84					
85	85	51					
86	86	20					
87	87	83					
88	88	155					
89	89	22					
90	90	170					
91	91	81					
92	92	86					
93	93	39					
94	94	78					
95	95	39					
96	96	78					
97	97	130					
98	98	33					
99	99	81					
100	100	140					
<b>Gunnison River near Grand Junction, CO, Left Gravel Bar at Gun-2</b>							
<b>Sediment-Size Distrib</b>							
	Percen	Sediment					
	til	partic					
	(fine	siz					
	than)	(mm)					
	0	12.0					
	1	19.9					
	5	32.0					
	10	37.6					
	16	49.7					
	20	51.0					
	25	53.0					
	30	60.7					
	40	71.0					
	50	<b>74.0</b>					
	60	79.4					
	70	86.3					
	75	90.0					
	80	98.0					
	84	105.5					
	90	118.6					
	95	140.8					
	99	170.1					
	100	175.0					
	n	100					
	Mean	77.08					
	Std Dv	33.187					
	Skew	0.8307					
	Kurt	0.9978					
	sigma c	1.4571					
	Gradatic	1.4571					
	Geom Ave	72.39					

Gunnison River near Grand Junction, CO, Left Gravel Bar at Gun-3		
Wolman Pebble-Count Measurements		
Remarks -- Cobble bar, left bank ~ 200' downstream		
[Assume: Sand or Coarse Sand = 1mm; Medium Sand = 0.25mm; Fine Sand = 0.075mm; Silt or Mud = 0.06mm]		
Meas No.	Tape Sta (ft)	2003 b-Axi (mm)
1	1	110
2	2	88
3	3	72
4	4	110
5	5	310
6	6	67
7	7	125
8	8	63
9	9	71
10	10	70
11	11	98
12	12	162
13	13	95
14	14	145
15	15	63
16	16	32
17	17	50
18	18	80
19	19	80
20	20	69
21	21	112
22	22	133
23	23	100
24	24	133
25	25	51
26	26	102
27	27	96
28	28	119
29	29	80
30	30	72
31	31	124
32	32	59
33	33	119
34	34	86
35	35	49
36	36	17
37	37	54
38	38	116
39	39	20
40	40	52
41	41	92
42	42	98
43	43	66
44	44	81
45	45	42
46	46	63
47	47	24
48	48	48
49	49	73
50	50	180
51	51	41
52	52	59
53	53	29
54	54	44
55	55	30
56	56	63
57	57	81
58	58	43
59	59	18
60	60	66
61	61	109
62	62	77
63	63	120
64	64	52

65	65	47					
66	66	34					
67	67	47					
68	68	132					
69	69	18					
70	70	93					
71	71	58					
72	72	68					
73	73	8					
74	74	18					
75	75	128					
76	76	98					
77	77	27					
78	78	60					
79	79	95					
80	80	103					
81	81	34					
82	82	35					
83	83	186					
84	84	100					
85	85	91					
86	86	108					
87	87	120					
88	88	101					
89	89	46					
90	90	31					
91	91	79					
92	92	35					
93	93	70					
94	94	109					
95	95	71					
96	96	31					
97	97	46					
98	98	93					
99	99	48					
100	100	62					
<b>Gunnison River near Grand Junction, CO, Left Gravel Bar at Gun-3</b>							
<b>Sediment-Size Distrib</b>							
	Percen	Sediment					
	til	partic					
	(fine	siz					
	than)	(mm)					
	0	8.0					
	1	16.9					
	5	19.9					
	10	30.9					
	16	35.0					
	20	43.8					
	25	47.8					
	30	51.7					
	40	63.0					
	50	<b>71.0</b>					
	60	81.0					
	70	96.6					
	75	100.3					
	80	109.0					
	84	112.6					
	90	124.1					
	95	133.6					
	99	187.2					
	100	310.0					
	n	100					
	Mean	77.83					
	Std Dv	43.707					
	Skew	1.7492					
	Kurt	7.0373					
	sigma c	1.794					
	Gradatic	1.794					
	Geom Ave	62.789					



Green River near Jensen, UT, cross section (Gr-1), F			
Wolman Pebble-Count Measuremen			
Remarks -- Cobble/pebble bar, right bank ~ 25' upstr			
[Assume: Sand or Coarse Sand = 1mm; Medium Sand = 0.25mm; Fine Sand = 0			
Silt or Mud = 0.06r			
Meas	Tape	2003	
No.	Sta	b-Axi	
	(ft)	(mm)	
1	1	80	
2	2	70	
3	3	77	
4	4	103	
5	5	35	
6	6	220	
7	7	145	
8	8	160	
9	9	132	
10	10	115	
11	11	40	
12	12	72	
13	13	40	
14	14	54	
15	15	70	
16	16	58	
17	17	15	
18	18	19	
19	19	61	
20	20	126	
21	21	33	
22	22	116	
23	23	120	
24	24	25	
25	25	160	
26	26	16	
27	27	56	
28	28	32	
29	29	24	
30	30	61	
31	31	15	
32	32	25	
33	33	16	
34	34	65	
35	35	62	
36	36	30	
37	37	29	
38	38	28	
39	39	55	
40	40	40	
41	41	50	
42	42	26	
43	43	59	
44	44	70	
45	45	30	
46	46	50	
47	47	69	
48	48	49	
49	49	72	
50	50	101	
51	51	35	
52	52	56	
53	53	98	
54	54	63	
55	55	12	
56	56	26	
57	57	107	
58	58	135	
59	59	70	
60	60	68	
61	61	42	
62	62	112	
63	63	43	
64	64	25	

65	65	29					
66	66	82					
67	67	62					
68	68	58					
69	69	53					
70	70	72					
71	71	58					
72	72	61					
73	73	25					
74	74	50					
75	75	90					
76	76	220					
77	77	26					
78	78	36					
79	79	230					
80	80	195					
81	81	20					
82	82	57					
83	83	54					
84	84	88					
85	85	158					
86	86	66					
87	87	76					
88	88	38					
89	89	80					
90	90	120					
91	91	55					
92	92	82					
93	93	21					
94	94	24					
95	95	8					
96	96	21					
97	97	9					
98	98	20					
99	99	16					
100	100	56					
<b>Green River near Jensen, UT, cross section (Gr-1), F</b>							
<b>Sediment-Size Distrib</b>							
	Percen	Sediment					
	til	partic					
	(fine	siz					
	than,	(mm)					
	0	8.0					
	1	9.0					
	5	16.0					
	10	20.0					
	16	25.0					
	20	26.0					
	25	29.8					
	30	35.0					
	40	50.0					
	50	<b>56.50</b>					
	60	62.4					
	70	72.0					
	75	80.0					
	80	91.6					
	84	107.8					
	90	126.6					
	95	160.0					
	99	220.1					
	100	230.0					
	n	100					
	Mean	65.84					
	Std Dv	47.4188					
	Skew	1.52806					
	Kurt	2.48001					
	sigma c	2.07654					
	Gradatic	2.07654					
	Geom Ave	51.9134					

Green River near Jensen, UT, cross section (Gr-2), F					
Wolman Pebble-Count Measuremen					
Remarks -- Cobble/pebble bar, right bank ~ 150' upstr					
[Assume: Sand or Coarse Sand = 1mm; Medium Sand = 0.25mm; Fine Sand = 0					
Silt or Mud = 0.06r					
Meas	Tape	2003			
No.	Sta	b-Axi			
	(ft)	(mm)			
1	1	57			
2	2	130			
3	3	0.35			
4	4	32			
5	5	58			
6	6	53			
7	7	0.062			
8	8	67			
9	9	90			
10	10	0.074			
11	11	33			
12	12	108			
13	13	41			
14	14	41			
15	15	121			
16	16	88			
17	17	89			
18	18	104			
19	19	61			
20	20	37			
21	21	115			
22	22	48			
23	23	89			
24	24	85			
25	25	142			
26	26	170			
27	27	118			
28	28	0.088			
29	29	32			
30	30	138			
31	31	38			
32	32	65			
33	33	75			
34	34	150			
35	35	0.044			
36	36	135			
37	37	210			
38	38	5			
39	39	190			
40	40	91			
41	41	35			
42	42	25			
43	43	80			
44	44	23			
45	45	0.35			
46	46	0.35			
47	47	60			
48	48	113			
49	49	85			
50	50	70			
51	51	81			
52	52	20			
53	53	115			
54	54	133			
55	55	91			
56	56	138			
57	57	67			
58	58	115			
59	59	66			
60	60	65			
61	61	68			
62	62	77			
63	63	0.35			
64	64	14			



65	65	73					
66	66	98					
67	67	49					
68	68	0.5					
69	69	102					
70	70	108					
71	71	0.044					
72	72	0.149					
73	73	19					
74	74	36					
75	75	45					
76	76	53					
77	77	0.25					
78	78	63					
79	79	66					
80	80	115					
81	81	55					
82	82	44					
83	83	85					
84	84	60					
85	85	65					
86	86	53					
87	87	48					
88	88	77					
89	89	0.149					
90	90	80					
91	91	0.149					
92	92	0.149					
93	93	0.149					
94	94	0.149					
95	95	82					
96	96	0.3					
97	97	125					
98	98	62					
99	99	65					
100	100	20					
<b>Green River near Jensen, UT, cross section (Gr-2), F</b>							
<b>Sediment-Size Distrib</b>							
	Percen	Sediment					
	til	partic					
	(fine	siz					
	than)	(mm)					
	0	0.0					
	1	0.0					
	5	0.1					
	10	0.1					
	16	0.4					
	20	18.0					
	25	30.3					
	30	36.7					
	40	53.0					
	50	<b>64.0</b>					
	60	71.2					
	70	85.0					
	75	90.3					
	80	104.8					
	84	115.0					
	90	125.5					
	95	138.2					
	99	190.2					
	100	210.0					
	n	100					
	Mean	63.987					
	Std Dv	47.389					
	Skew	0.5114					
	Kurt	0.0442					
	sigma c	18.127					
	Gradatic	18.127					
	Geom Ave	6.3443					

Green River near Jensen, UT, cross section (Gr-3), F					
Wolman Pebble-Count Measuremen					
Remarks -- Cobble/pebble bar, right bank ~ 100' upstr					
[Assume: Sand or Coarse Sand = 1mm; Medium Sand = 0.25mm; Fine Sand = 0					
Silt or Mud = 0.06r					
Meas	Tape	2003			
No.	Sta	b-Axi			
	(ft)	(mm)			
1	1	112			
2	2	67			
3	3	70			
4	4	0.177			
5	5	4			
6	6	36			
7	7	13			
8	8	43			
9	9	84			
10	10	58			
11	11	14			
12	12	112			
13	13	0.24			
14	14	0.24			
15	15	60			
16	16	165			
17	17	0.3			
18	18	7			
19	19	55			
20	20	13			
21	21	112			
22	22	100			
23	23	0.3			
24	24	130			
25	25	32			
26	26	39			
27	27	13			
28	28	90			
29	29	132			
30	30	14			
31	31	0.3			
32	32	0.3			
33	33	20			
34	34	38			
35	35	8			
36	36	39			
37	37	95			
38	38	88			
39	39	25			
40	40	35			
41	41	21			
42	42	30			
43	43	70			
44	44	100			
45	45	44			
46	46	30			
47	47	70			
48	48	42			
49	49	62			
50	50	15			
51	51	91			
52	52	70			
53	53	21			
54	54	65			
55	55	18			
56	56	116			
57	57	28			
58	58	88			
59	59	42			
60	60	118			
61	61	90			
62	62	175			
63	63	80			
64	64	118			

65	65	45					
66	66	58					
67	67	24					
68	68	0.177					
69	69	110					
70	70	125					
71	71	81					
72	72	115					
73	73	122					
74	74	115					
75	75	129					
76	76	140					
77	77	115					
78	78	115					
79	79	0.3					
80	80	79					
81	81	46					
82	82	87					
83	83	148					
84	84	55					
85	85	59					
86	86	31					
87	87	115					
88	88	25					
89	89	95					
90	90	0.3					
91	91	53					
92	92	92					
93	93	150					
94	94	85					
95	95	0.3					
96	96	65					
97	97	16					
98	98	35					
99	99	27					
100	100	38					
<b>Green River near Jensen, UT, cross section (Gr-3), F</b>							
<b>Sediment-Size Distrib</b>							
	Percen	Sediment					
	til	partic					
	(fine	siz					
	than)	(mm)					
	0	0.2					
	1	0.2					
	5	0.3					
	10	0.3					
	16	13.0					
	20	15.8					
	25	23.3					
	30	29.4					
	40	39.0					
	50	<b>56.5</b>					
	60	70.0					
	70	88.6					
	75	95.0					
	80	112.0					
	84	115.0					
	90	118.4					
	95	132.4					
	99	165.1					
	100	175.0					
	n	100					
	Mean	61.249					
	Std Dv	45.316					
	Skew	0.4021					
	Kurt	-0.8296					
	sigma c	2.9742					
	Gradatic	2.9742					
	Geom Ave	38.665					

