

LOUISIANA GEOLOGICAL SURVEY

VIBRACORE DESCRIPTION SHEET

CORE IDENTIFICATION: CI-87-22 R₁ (587cm) DESCRIBED BY: R. A. McBride

LOCATION: East of N.E. Pass - 54' H₂O Depth

DATE: 9/9/89

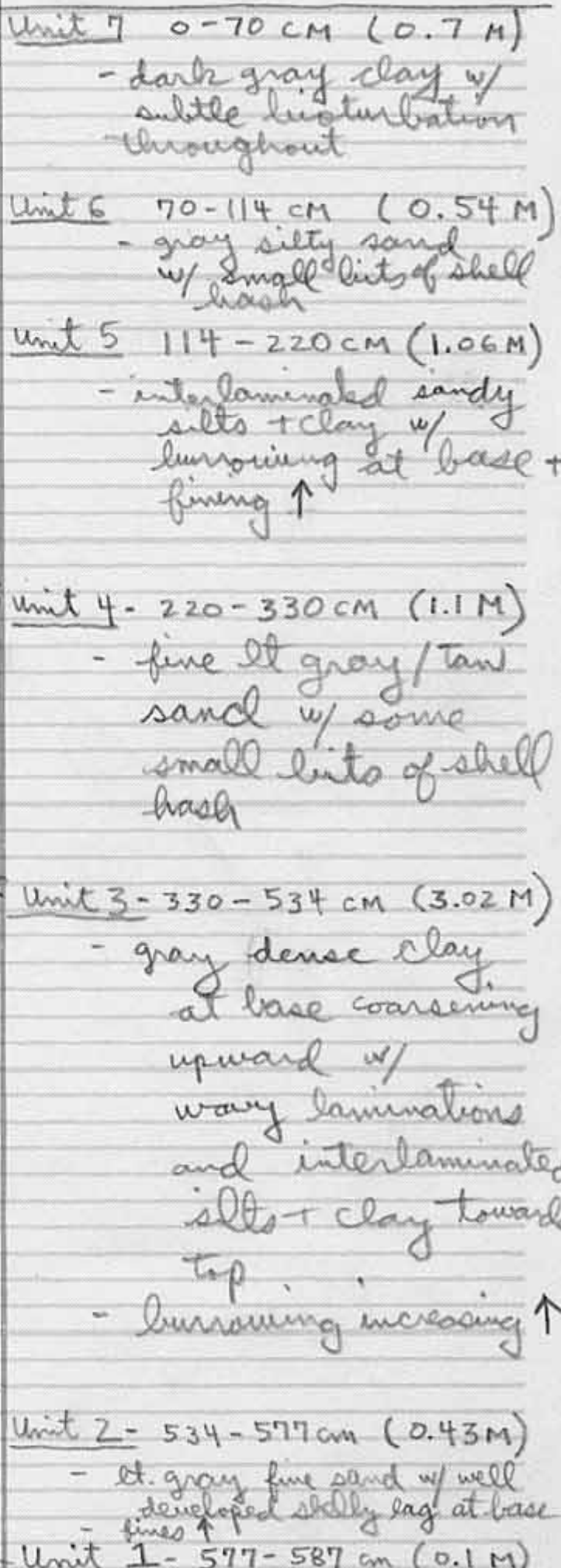
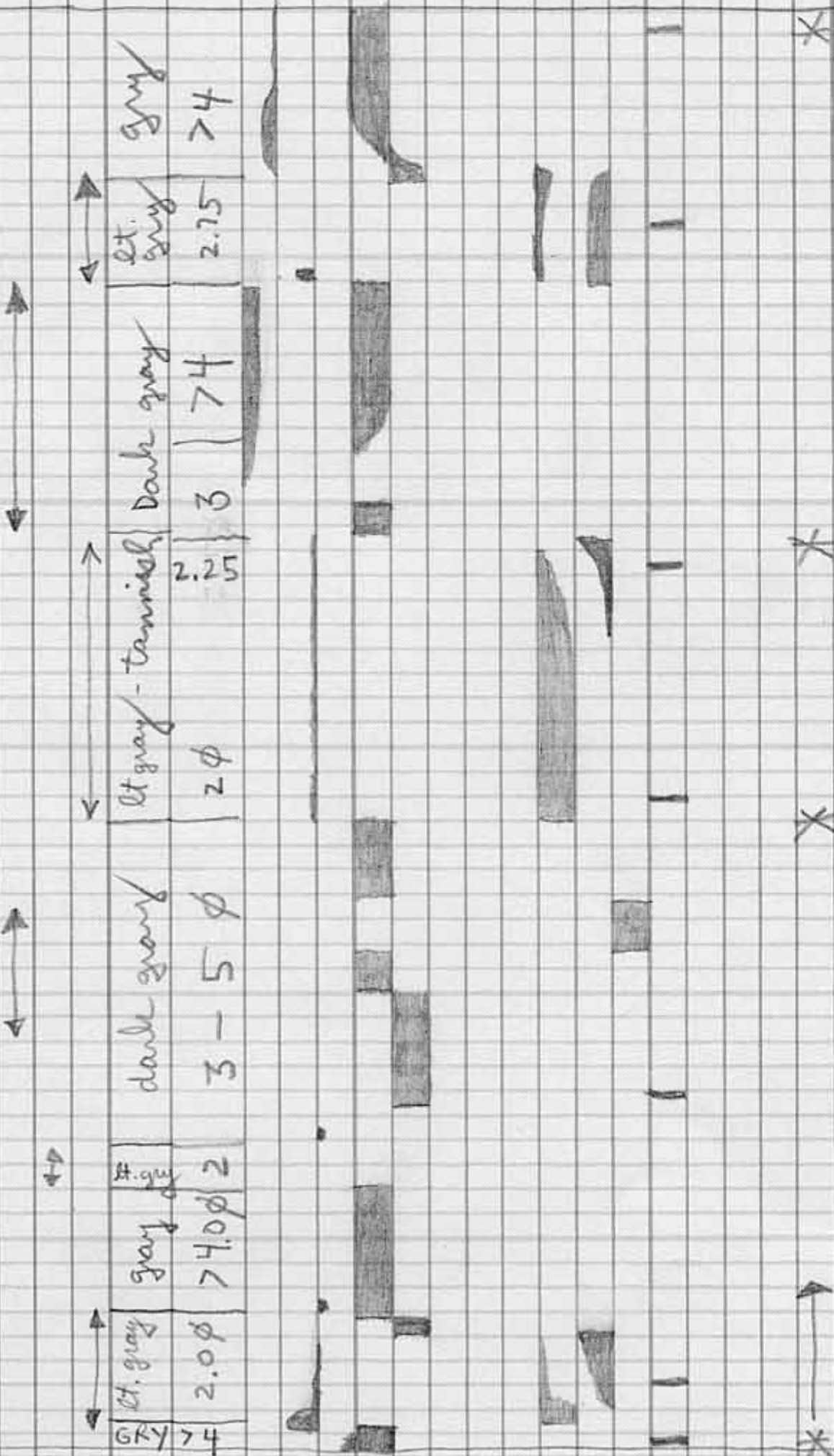
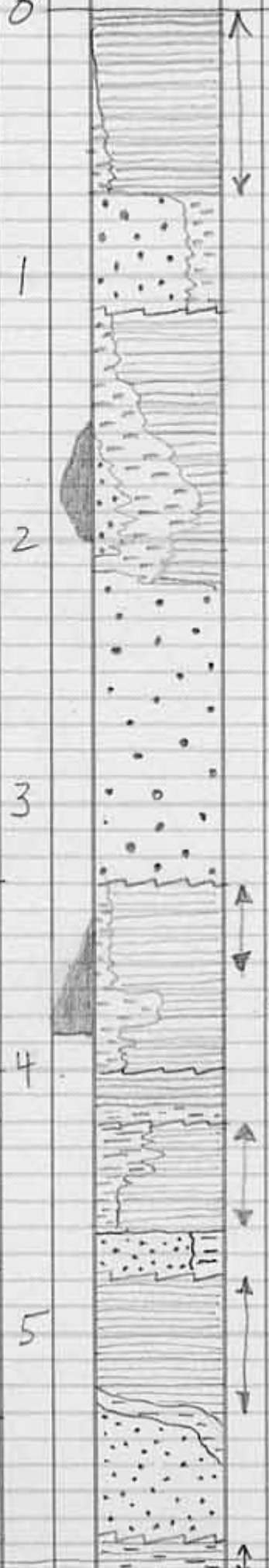
| SEDIMENTARY TEXTURE & STRUCTURES | INTERVAL DEFORMATION | SED. TYPE | BED THICKNESS | | | | COLOR | AV. GRAIN SIZE ϕ | BURROWING | SHELL CONTENT | % ORGANIC | STRATIFICATION TYPE | | | | | | SAMPLE GRAIN-SIZE PEEL | RADIOMETRIC | RADIOGRAPH | PHOTOGRAPH | COMMENTS |
|----------------------------------|----------------------|-----------|---------------|---------|----------|---------|------------|-----------------------|-----------|---------------|-----------|---------------------|------|------------|-----------|-----------|---------|------------------------|-------------|--|------------|----------|
| | | | < 1 cm | 1-10 cm | 10-30 cm | > 30 cm | | | | | | LAMINATED | WAVY | LENTICULAR | SM X BEDS | LG X BEDS | MASSIVE | | | | | |
| | 0-70 cm | | | | | | > 4 | | | | | | | | | | | | | <p>* Unit 7 0-70 cm (0.7 M) - dark gray clay w/ subtle lamination throughout</p> | | |
| | 70-114 cm | | | | | | 2.75 | | | | | | | | | | | | | <p>Unit 6 70-114 cm (0.54 M) - gray silty sand w/ small bits of shell hash</p> | | |
| | 114-220 cm | | | | | | 7.4 | | | | | | | | | | | | | <p>Unit 5 114-220 cm (1.06 M) - interlaminated silty clay w/ burrowing at base + fining \uparrow</p> | | |
| | 220-330 cm | | | | | | 2.25 | | | | | | | | | | | | | <p>* Unit 4 - 220-330 cm (1.1 M) - fine lt gray/tan sand w/ some small bits of shell hash</p> | | |
| | 330-534 cm | | | | | | 2 ϕ | | | | | | | | | | | | | <p>* Unit 3 - 330-534 cm (3.02 M) - gray dense clay at base coarsening upward w/ wavy laminations and interlaminated silts + clay towards top - burrowing increasing \uparrow</p> | | |
| | 534-577 cm | | | | | | 2.0 ϕ | | | | | | | | | | | | | <p>Unit 2 - 534-577 cm (0.43 M) - lt. gray fine sand w/ well developed shelly lag at base fining \uparrow</p> | | |
| | 577-587 cm | | | | | | 7.4 | | | | | | | | | | | | | <p>* Unit 1 - 577-587 cm (0.1 M) - gray silty clay w/ detrital organics, shells + siderite balls</p> | | |

1 PD
2 PD

OUTER FRINGE

PD

lagoon/Bay



587cm

