

LOUISIANA GEOLOGICAL SURVEY

VIBRACORE DESCRIPTION SHEET

CORE IDENTIFICATION: CI-87-1 R₁ of 3 DESCRIBED BY: Brooks

LOCATION: Due N of northern tip Chandeleur Isl. DATE: 10/12/89
 43' H₂O Depth

SEDIMENTARY TEXTURE & STRUCTURES	INTERVAL (cm)	SED. TYPE	BED THICKNESS				COLOR	AV. GRAIN SIZE	BURROWING	SHELL CONTENT	% ORGANIC	STRATIFICATION TYPE					SAMPLE GRAIN-SIZE PEEL	RADIOMETRIC RADIOGRAPH PHOTOGRAPH	COMMENTS
			< 1 cm	1-10 cm	10-30 cm	> 30 cm						LAMINATED	WAVY	LENTICULAR	SM X BEDS	LG X BEDS			
<div style="display: flex; justify-content: space-between; width: 100%;"> 100 50 0 </div> <div style="text-align: center;">% SAND</div>	1					Medium-Dark Gray											20-90cm - netted - organic streaks. 0-360cm - massive silty clay		
	2					Medium-Dark Gray													
	3																	280-320 - vertical orange-brown streaks 300cm - sand-filled burrow 337cm - subtle but abrupt color change to lighter gray	
	4					Medium-Dark Gray												410cm - diagonal orange brown streak 360-523cm - muddy sand w/ shells, fining upward	
	5																	523cm bottom of R ₁	

NOTE: No Run 2

LOUISIANA GEOLOGICAL SURVEY

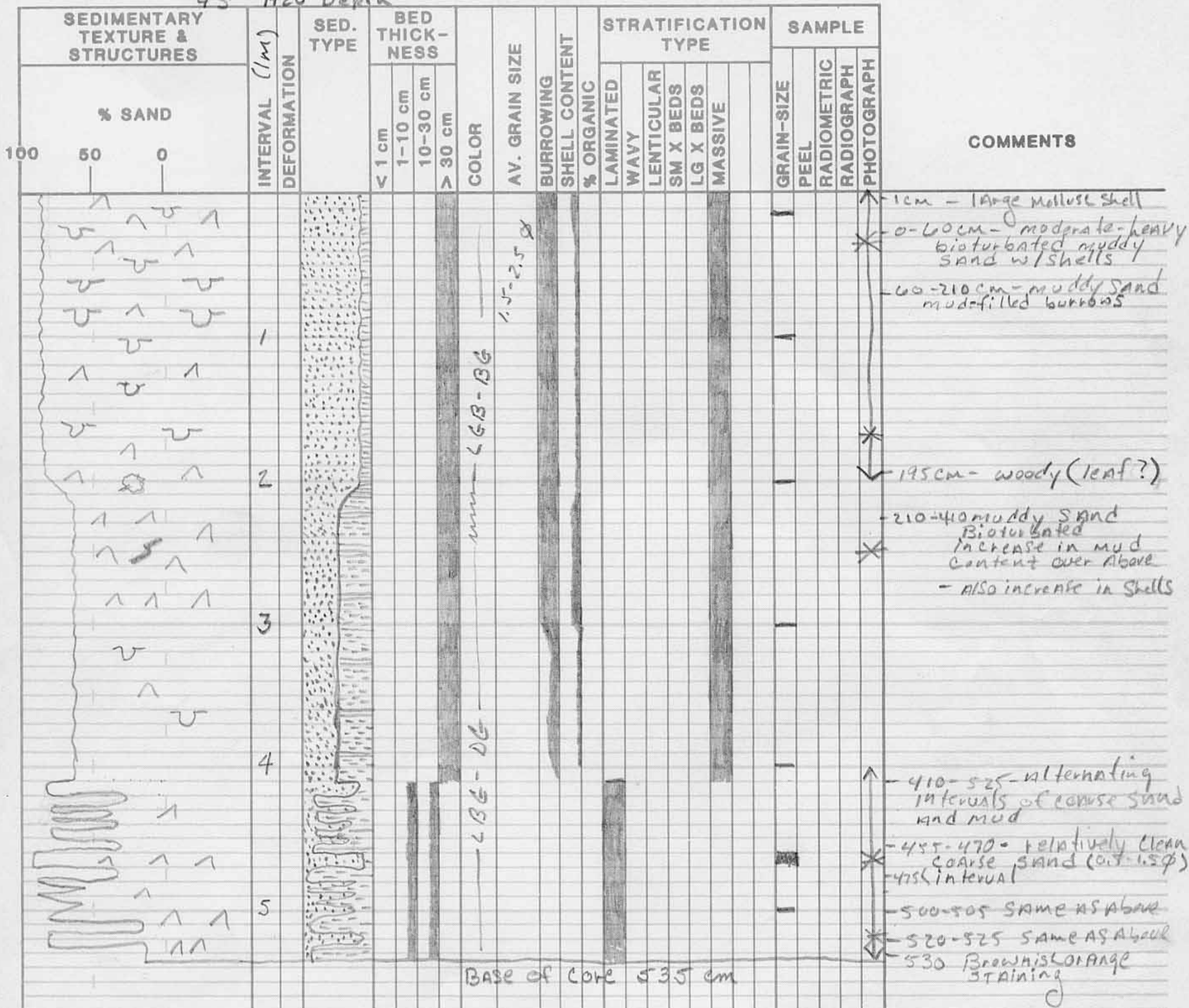
VIBRACORE DESCRIPTION SHEET

CORE IDENTIFICATION: CI-87-1 R₃ of 3

DESCRIBED BY: Brooks

LOCATION: Due N. northern tip Chandeleur Is.
 43' H₂O Depth

DATE: 10/12/89



BASE OF CORE 535 cm

NOTE: Top 2 dm probably originally laminated like lower portion but destroyed by bioturbation! Deposited in fluctuating energy regime

fluctuating energy regime