

ArcReader quick-start tutorial

IN THIS CHAPTER

- **Exercise 1: Viewing a map**
- **Exercise 2: Querying a map**
- **Exercise 3: Printing a map**
- **Exercise 4: Exploring a 3D map**

The best way to learn ArcReader is to try it yourself. This tutorial guides you through some basic ArcReader skills as you explore a map of Angelus Oaks, California.

Exercise 1 introduces various ways that you can view a map.

Exercise 2 shows you how to query a map.

Exercise 3 walks you through printing a map.

Exercise 4 shows you how to view a three-dimensional map.

Each exercise in this tutorial takes between 15 and 20 minutes to complete. You can either work through the entire tutorial at once or complete each exercise one at a time.

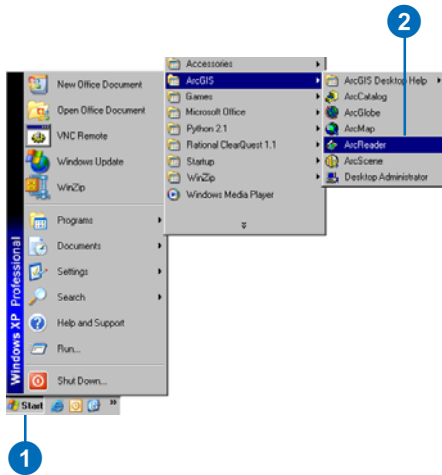
The data and maps for this tutorial can be found on the ArcReader product page on the ESRI Web site located at <http://www.esri.com>.

Exercise 1: Viewing a map

In this exercise, you will open and explore a published map with ArcReader. You will also use ArcReader to query data on the map.

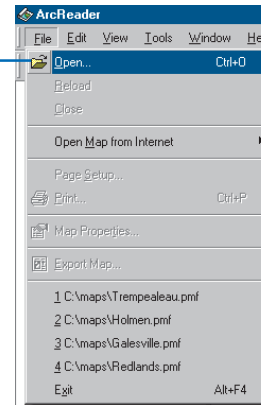
Starting ArcReader

1. Click Start on the Windows taskbar.
2. Click Programs, point to ArcGIS, and click ArcReader.
ArcReader opens.

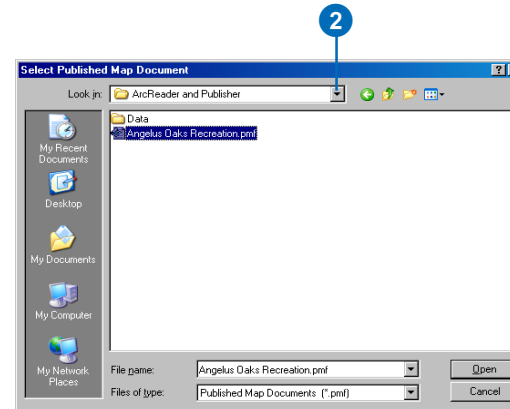


Opening an existing published map

1. Click File and click Open.

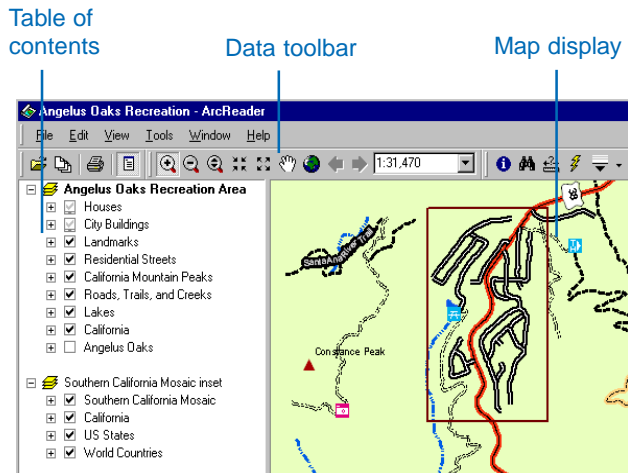


2. Click the Look in drop-down arrow and navigate to the map folder on the local drive where you installed the tutorial.



3. Click Angelus Oaks Recreation.pmf and click Open.
ArcReader opens the map.

ArcReader can open published map files (.pmf) that have been created in ArcMap and ArcGlobe with the ArcGIS Publisher extension. These published maps do not actually store the data shown on the map but rather reference the data, which may be stored on a local disk, another computer, or the Internet. The map document stores map elements, such as titles, scale bars, and north arrows.



This is an example of a .pmf—the Angelus Oaks Recreation.pmf.

A *data frame* is a frame on the map that groups the layers you want to display together.

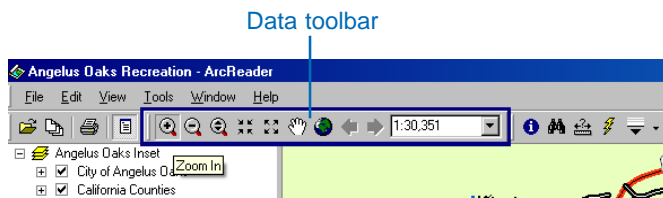
This map contains four data frames. Most of the tutorial exercises will use the Angelus Oaks Recreation Area data frame. The other three data frames will be discussed later in this tutorial. The layers contained in the Angelus Oaks Recreation Area data frame are described in the following list:

<u>Layers</u>	<u>What layers represent</u>
Houses	Locations of residences
City Buildings	Public buildings and businesses in Angelus Oaks
Landmarks	Locations of major recreational items in Angelus Oaks, including picnic areas, trailheads, and viewing points
Residential Streets	Locations of roads in Angelus Oaks residential areas
California Mountain Peaks	Locations of California mountain peaks in the area
Roads, Trails, and Creeks	Locations of major highways, trails, and creeks
Lakes	Locations of major lakes in Angelus Oaks
California	State of California outline
Angelus Oaks	Angelus Oaks mosaicked raster

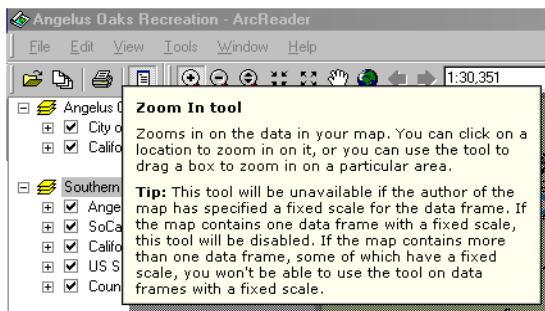
The map portrays Angelus Oaks and the surrounding region. Notice that there are check boxes next to each layer name in the table of contents (except Angelus Oaks). All layers that are checked are drawn in the map display area. Notice that the check box next to the Houses layer is unavailable, and a small scale bar appears underneath the check box. This is because there is a visible scale range set for that layer. In this case, the Houses layer will only display when you are zoomed in close to the residential area.

Moving around a map

The Data toolbar has tools to move around the map and query features on the map. Point to each icon, without clicking, to see the name of each tool displayed in a ToolTip. This tutorial will use these names to refer to specific buttons and tools. When you interact with the map, one of these tools will be active, and the pointer will change to the active tool when moved over the map.



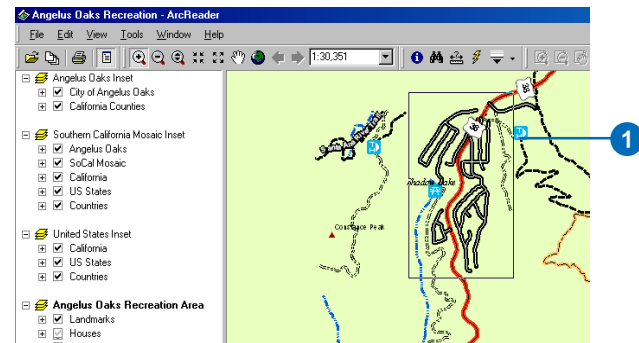
If you need more information about how a tool or command works, you can quickly access the context-sensitive help that is available for most tools and menu items. Press Shift + F1 on your keyboard while pointing to the tool or highlighted item on a drop-down menu, and information will appear, if available.



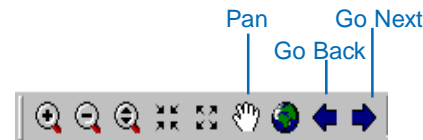
Context-sensitive help for the Zoom In tool

1. Click the Zoom In tool, then click and drag a box around the Angelus Oaks residential area. (The residential area is outlined in dark red on your map.)

Notice that the houses are now visible on the map and the Houses layer check box is no longer unavailable.



2. Using the Pan tool, you can interactively manipulate the map. Click the Pan tool, then click the map and hold down the left mouse button to drag the display in any direction.
3. The Go Back and Go Next buttons can be used to revisit places to which you have previously zoomed. Click the Go Back button now to view the previous map extent.

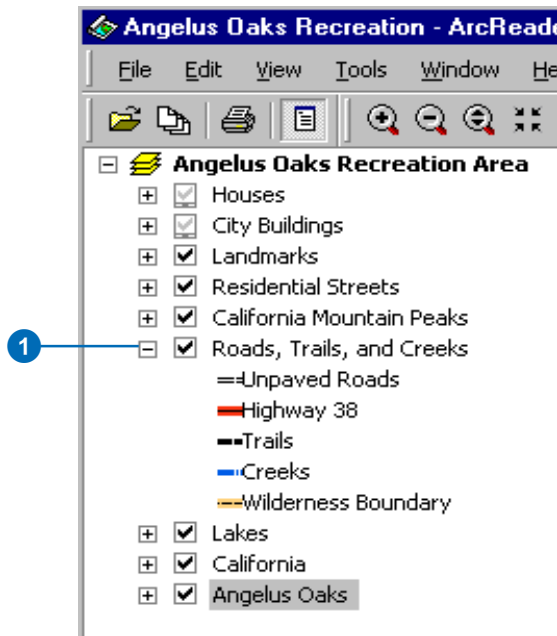


4. Click View, point to Bookmarks, and click Angelus Oaks Recreation Area: Angelus Oaks to reset the map to its original extent.

Turning layers on and off

The table of contents is where you turn map layers on and off. To display a layer, check the check box next to the layer's name. To turn the layer off, uncheck the box. It is important to remember that layers will draw on the map in the order they appear in the table of contents. In the Angelus Oaks example, the Houses layer will draw on top of all other layers, while the Angelus Oaks layer will draw beneath all other layers.

1. Click the plus sign next to the Roads, Trails, and Creeks layer to see the symbols for each feature in the layer.

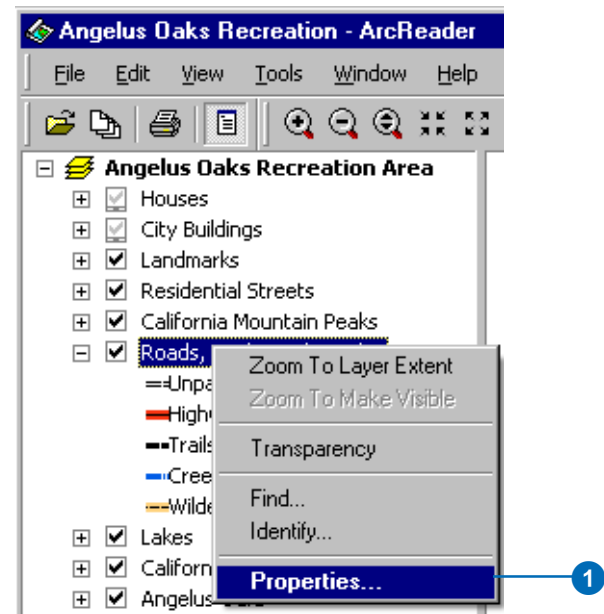


2. Uncheck the Roads, Trails, and Creeks layer under the Angelus Oaks Recreation Area data frame. Notice that the layer disappears from the map. Now check the Roads, Trails, and Creeks layer. Notice that the layer now draws on the map.

Obtaining information about layers

Each of the layers in a map has a set of properties that can be viewed, allowing you to learn the functionality available for that layer.

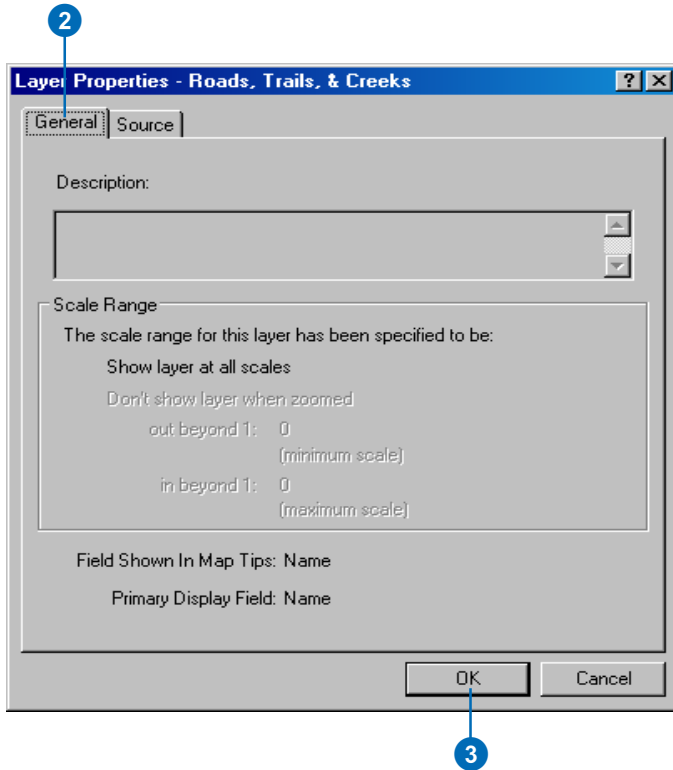
1. In the table of contents, right-click Roads, Trails, and Creeks and click Properties.



2. Click the General tab.

Here, you can see whether the Roads, Trails, and Creeks layer will be displayed at all scales or only within a specific range of scales. You can also see whether MapTips have been enabled for the layer and which field has been chosen to be displayed in the MapTips. MapTips are on-screen descriptions of map features that appear when you point to a feature. Later in this tutorial you will use MapTips from this layer.

3. Click OK to close the Layer Properties dialog box.

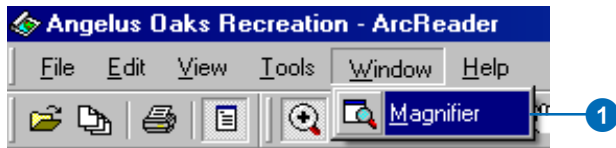


Using the Magnifier Window

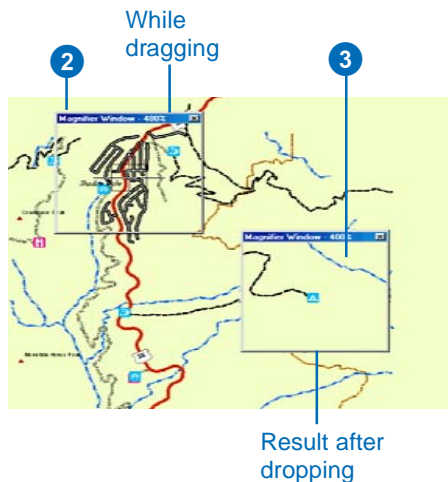
There are times when you may not want to change the location displayed on the map but still need to see more detail. The ArcReader Magnifier Window allows you to do this.

1. Click Window and click Magnifier.

The Magnifier Window opens.



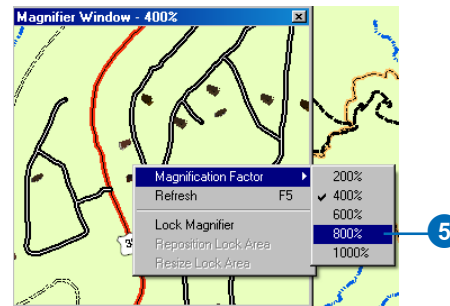
2. Click the title bar of the Magnifier Window and drag it over the map. While you are dragging it, the Magnifier Window will show crosshairs to indicate which part of the display will be magnified.



3. When the crosshairs are over the portion of the map you would like to magnify, release the mouse button. You will see an enlarged view of the location under the Magnifier Window.

You can change several properties of the Magnifier Window, such as the magnification factor and what the Magnifier Window displays.

4. Move your pointer near the edge of the Magnifier Window until it turns into resizing arrows, then click and drag the window in the direction you want to resize (make it a little larger).
5. Place your pointer inside the Magnifier Window and right-click. Point to Magnification Factor and click 800%.



This will scale the data displayed in the Magnifier Window by the percentage chosen.

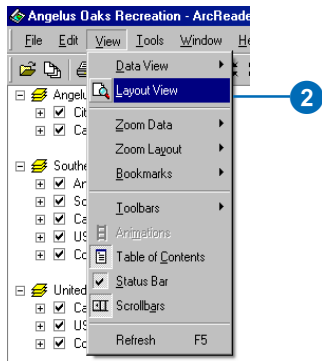
6. Right-click the Magnifier Window and click Lock Magnifier. Click and drag the title bar of the Magnifier Window to move it somewhere else; notice that the picture doesn't change but instead keeps your snapshot.

- To reenable the magnifier, right-click the Magnifier Window and click Lock Magnifier again. The window redraws to magnify the section of the map it is over. When you have finished experimenting with the Magnifier Window, click the Close button.

Data view and layout view

ArcReader can display a map in either data view or layout view. Up to this point, this tutorial has been using data view. Data view shows the contents of a data frame. Layout view shows the map as it would appear on a printed page. Layout view also shows map elements that aren't contained within the data frame, such as the map title, legend, scale bar, and north arrow.

- Click the View menu, point to Bookmarks, and click Angelus Oaks Recreation Area: Area of Layout.
- Click the View menu and click Layout View.

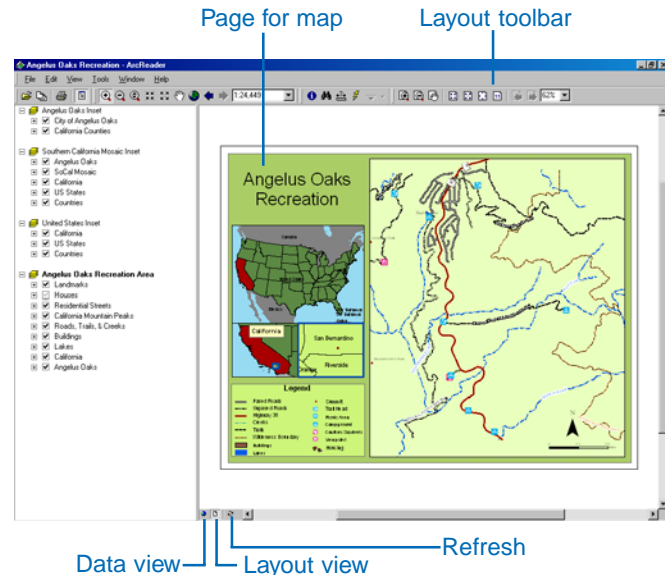


The map displays in layout view. Notice the page includes a title, legend, scale bars, and some supporting text. In this layout, you will see three inset maps on the left side of the

display: the United States, California, and Angelus Oaks. These inset maps are created using the three additional data frames mentioned at the beginning of this exercise. For the exercises in this tutorial, you will continue to use only the Angelus Oaks Recreation Area data frame. The additional data frames are only used for this particular layout.

In layout view, the Layout toolbar is displayed, which contains tools for navigating in layout view. Point to each icon, without clicking, to see the name of each tool.

The layout tools in the Layout toolbar are similar to the tools in the Data toolbar. They allow you to change the way the page is displayed. Notice that the data tools are still accessible for changing the view of the data within the data frame.



There are shortcuts for switching between data and layout view. On the scroll bar at the bottom of the map, there are three small buttons. Clicking the globe icon switches to data view, clicking the page icon switches to layout view, and clicking the arrow icon refreshes the map.

In this exercise, you learned various ways to view a published map in ArcReader. In the next exercise, you will learn how to query a map in ArcReader.


3. If you are continuing to the next exercise, leave the Angelus Oaks Recreation map open; otherwise, close it and exit ArcReader.

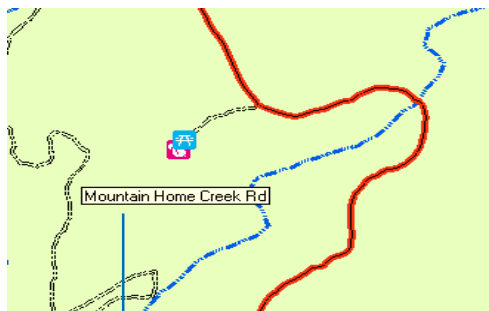
Exercise 2: Querying a map

A map in ArcReader typically contains more information than you initially see. For example, a feature may hold attribute information that is not labeled or displayed on the map. With ArcReader, you can query that information or use MapTips to find a feature on the map.

Using MapTips

The most readily accessible kind of map attribute information comes in the form of MapTips. MapTips contain an attribute chosen by the map author that displays whenever you rest any data tool over a feature on the map. MapTips are only visible while in data view.

1. If you closed your map document from Exercise 1, start ArcReader and open the Angelus Oaks Recreation.pmf for this exercise.
2. Click the Data View button  located at the bottom left part of the map. If the Data View button is not visible, turn on the scroll bars by clicking View, then clicking Scroll bars.



Road name

3. Click any tool on the Data toolbar and point to a road, trail, or creek to see its name.

The Roads, Trails, and Creeks layer is the only layer in this map that has MapTips enabled. You can tell if MapTips are enabled for a layer by right-clicking the layer name in the table of contents and clicking Properties, then clicking the General tab.

Identifying a location

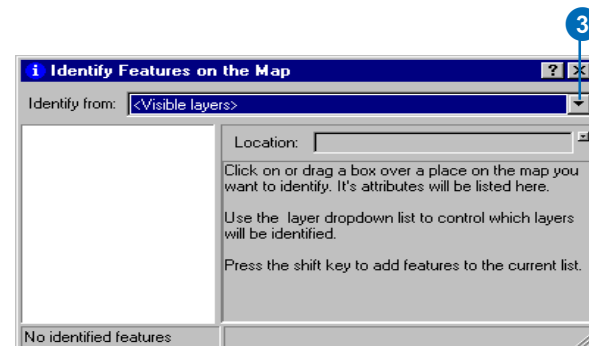
You can use the Identify tool to obtain spatial and tabular information. You can see which features are at a specific location and also investigate the attributes of each feature.

1. Click the View menu, click Bookmarks, then click Angelus Oaks Recreation: City Buildings.
2. Click the Identify tool.

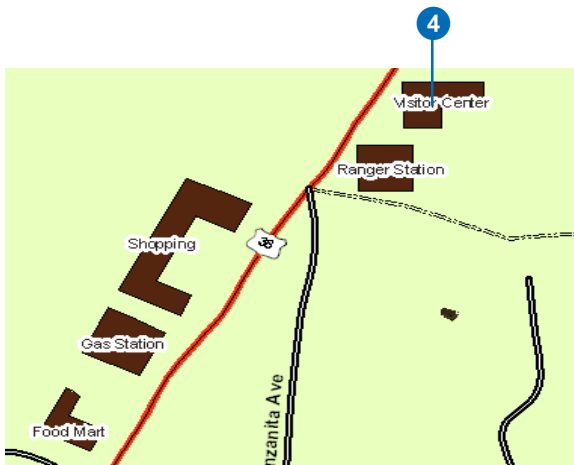
The Identify dialog box opens.



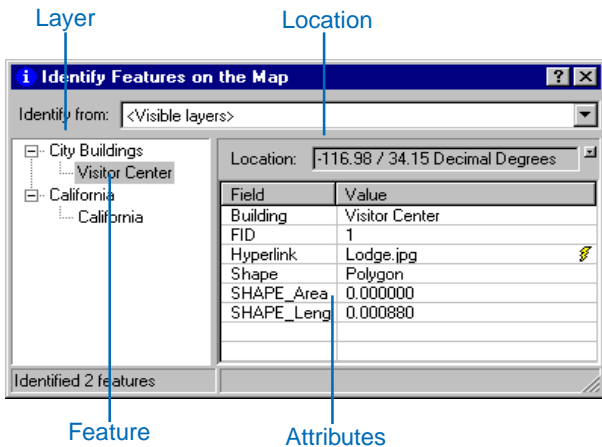
3. Click the Identify from drop-down list and click <Visible layers>.



4. Click the building that represents the Visitor Center.



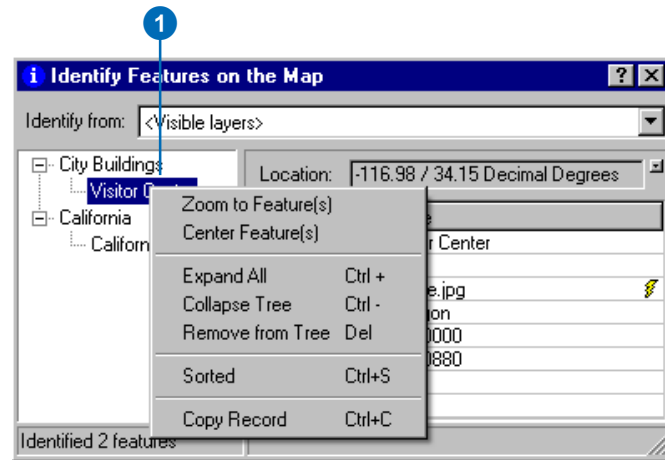
Information for the Visitor Center and other visible layers are displayed in the Identify dialog box.



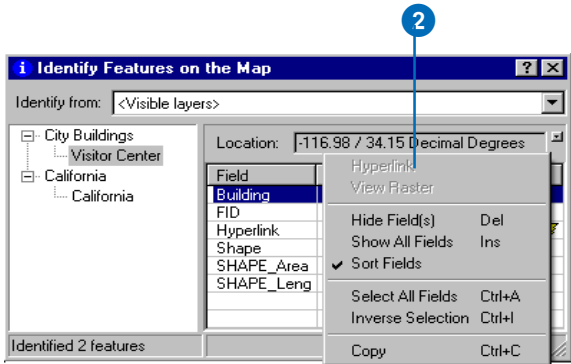
Identify dialog box commands

Right-clicking features, layers, or their attributes in the Identify dialog box opens a context menu with options for working with the fields for that feature or layer.

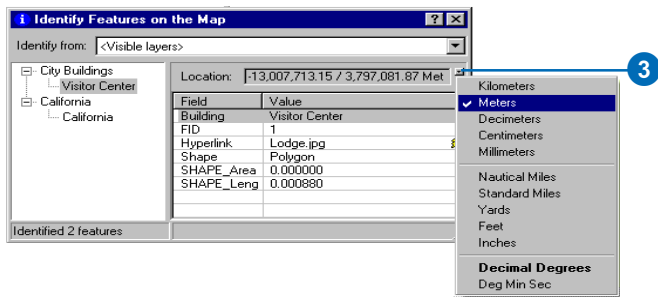
1. Right-click a layer or feature on the left side of the Identify dialog box. The options in the context menu allow you to zoom to features, center features, expand all the layers and features, collapse the Identify tree, remove from the Identify tree, sort the layers and features, or copy a record.



2. Right-click an item in the Value column on the right side of the window. The options in the context menu allow you to organize the displayed attribute information. You can hide or show all the fields, sort fields, select all the fields, switch the set of selected fields, or copy all the fields. If you click Copy, you can then paste the information into another application, such as a text editor or a spreadsheet.



3. Click the small drop-down button to the right of the Location text box to open a menu that will allow you to display the location of the city in the units of your choice. Click Meters.



4. Click Visitor Center underneath City Buildings. Click Lodge.jpg in the attribute columns. A hyperlinked picture of the Visitor Center, which resembles a lodge, will appear.

You'll learn more about hyperlinks later in this tutorial.

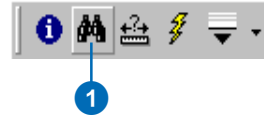
5. Close the Identify dialog box.

Finding a location

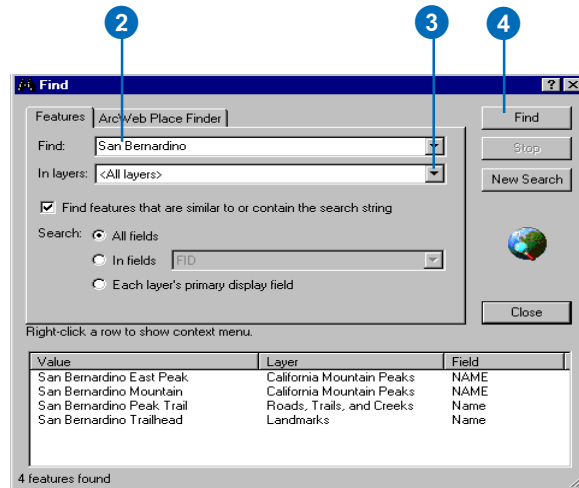
In ArcReader, it is easy to find a feature based on a name or value using the Find tool.

1. Click the Find tool.

The Find dialog box appears.

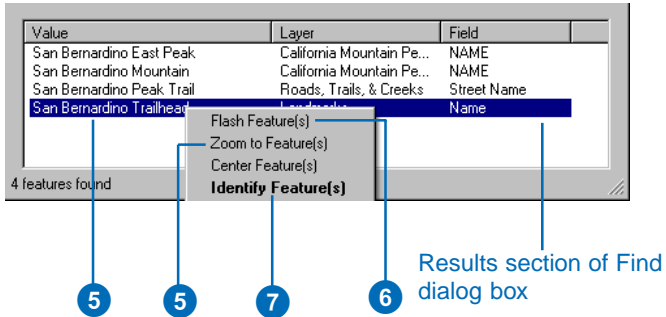


2. In the Find text box, type "San Bernardino".
3. Click the In layers drop-down arrow and click <All layers>.
4. Click Find. ArcReader locates all the items contained in the map named San Bernardino and shows them as rows in the Results section of the window.



Once you've found a place, you can use the Find dialog box to navigate to or learn more about the feature.

- In the Find dialog box, right-click San Bernardino Trailhead, and click Zoom to Feature(s). ArcReader zooms to the trailhead for the San Bernardino Peak trail.



- Make sure the Find dialog box does not cover the San Bernardino Peak Trailhead. In the Find dialog box, right-click San Bernardino Trailhead and click Flash Feature(s). The trailhead will flash.
- Right-click San Bernardino Trailhead and click Identify Feature(s). The Identify dialog box, which contains all the attribute information for the San Bernardino Peak Trailhead, appears.
- Close the Identify and Find dialog boxes.

Using hyperlinks

Maps viewed with ArcReader may have hyperlinks to provide additional information about certain features. Hyperlinks allow you to provide additional information about features by linking to items, such as documents,

videos, and Web pages. As you saw in the previous lesson about identifying features, hyperlinks can be accessed through the Identify dialog box. Hyperlinks can also be accessed directly on the map document. The Angelus Oaks Recreation map contains additional hyperlinks in the City Buildings and Landmarks layers. You will need an Internet connection for the hyperlinks in this exercise. If you do not have an Internet connection, skip step 4 of this exercise.

- Click the View menu, point to Bookmarks, click Angelus Oaks Recreation Area: Viewpoint and Trailhead, then continue with the exercise.
- Verify that the Landmarks layer has been checked on, and click the Hyperlink tool on the Data toolbar to activate it.



Notice that a blue dot appears over the icons for both the San Bernardino Peak Trailhead in the upper right corner and the Viewpoint in the lower left corner. These blue dots indicate hyperlinked features.



3. Point the Hyperlink tool at the center of the blue dot hyperlink for the Viewpoint shown in the bottom left corner. The pointer changes to a pointing hand. Click to open a picture of the view from this viewpoint.
4. Point the Hyperlink tool at the center of the blue dot hyperlink for the San Bernardino Peak Trailhead. The pointer changes to a pointing hand. Click to open your default Internet browser. The official Web site of the United States Forest Service, San Bernardino, where you can learn more about the San Bernardino National forest, displays.

Measuring distance

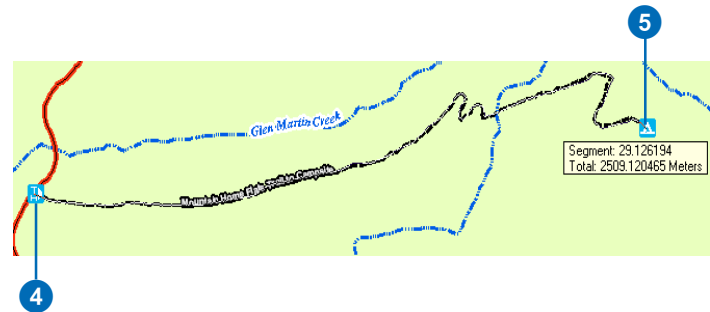
You can measure distances and areas in ArcReader. The ArcReader Measure tool allows you to see how far apart two places are, plot a route and check the distance, or measure the area of an object.

1. Click the View menu, point to Bookmarks, then click Angelus Oaks Recreation Area: Mountain Home Flats Trail.
2. Click Tools, click Options, and click the 2D Data View tab. Uncheck MapTips so they do not appear when you are measuring features in the region.
3. Click the Measure tool on the Data toolbar.



Measure tool

4. Click the Mountain Home Flats Trailhead on the left side of the map, then trace along the trail to the campsite by clicking each time you want to change directions.

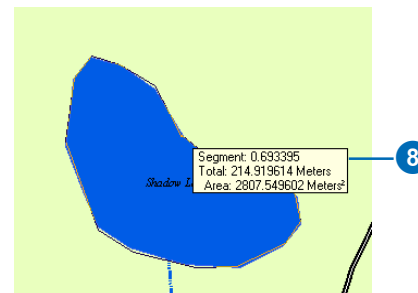


5. Double-click the campsite to finish measuring.

The line you drew disappears.

There are a few things to notice as you do this. Attached to the pointer you will see a box that contains the current segment's length. Second, you will see the total distance you have measured, approximately 2,509 meters.

6. Click the View menu, point to Bookmarks, then click Angelus Oaks Recreation Area: Shadow Lake.
7. Click the Measure tool on the Data toolbar.
8. Hold down the Alt key, then click a path following the perimeter of Shadow Lake. In addition to seeing the segment distance and total distance, the area will now be listed in the box attached to the pointer.



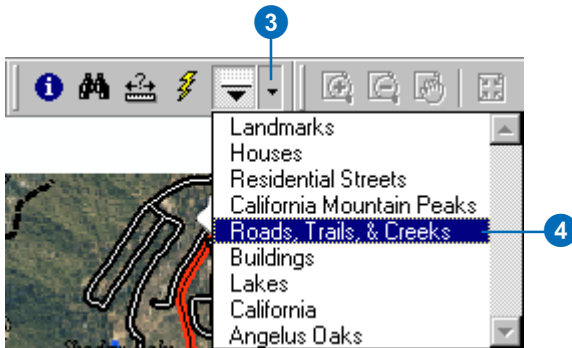
Using the Swipe tool

It is often useful to see how certain layers overlay other layers. The Swipe tool in ArcReader allows you to see the layers underneath a particular layer without turning it off in the table of contents. Before beginning this exercise, make sure you are in data view.

1. Click View, point to Bookmarks, and click Angelus Oaks Recreation: Angelus Oaks.
2. In the Angelus Oaks Recreation Area data frame, turn off the California layer (uncheck the box) and turn on the Angelus Oaks layer (check the box), to reveal the Angelus Oaks image layer.
3. Click the Swipe button on the Data toolbar.

A drop-down list of the layers in the data frame appears.

4. Double-click Roads, Trails, and Creeks. This will be the layer that is swiped over the rest of the layers.



A layer can be swiped vertically or horizontally. When you position the Swipe tool over the map, the pointer will turn into an arrow that points in the direction that you can swipe the layer.

5. Position the pointer at the top of the Angelus Oaks picture. Click and drag the mouse down to the bottom of the data frame. The pointer will change to a double arrow, and the Roads, Trails, and Creeks layer will disappear when the mouse is dragged up, down, left, or right to reveal the Angelus Oaks raster layer beneath.
6. If you are continuing to the next exercise, leave the Angelus Oaks Recreation map open; otherwise, close it and exit ArcReader.

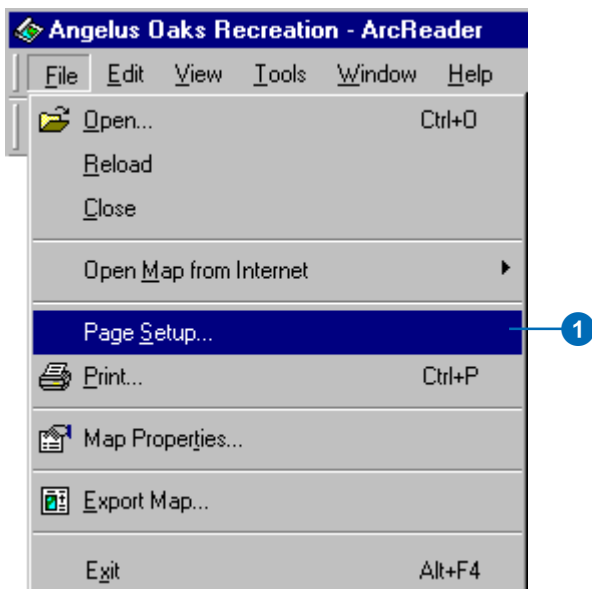
In this exercise, you have used the tools in ArcReader to perform queries on the Angelus Oaks Recreation Area map. The next exercise will show you how to print from ArcReader.

Exercise 3: Printing a map

To perform the following exercise, you will need to have a printer available. The printer should be able to print a letter size (or A4) sheet of paper and can be either a black-and-white or color printer.

1. Click the ArcReader File menu and click Page Setup.

The Page Setup dialog box opens. This dialog box contains options that allow you to change which printer you are using or the settings for that printer.

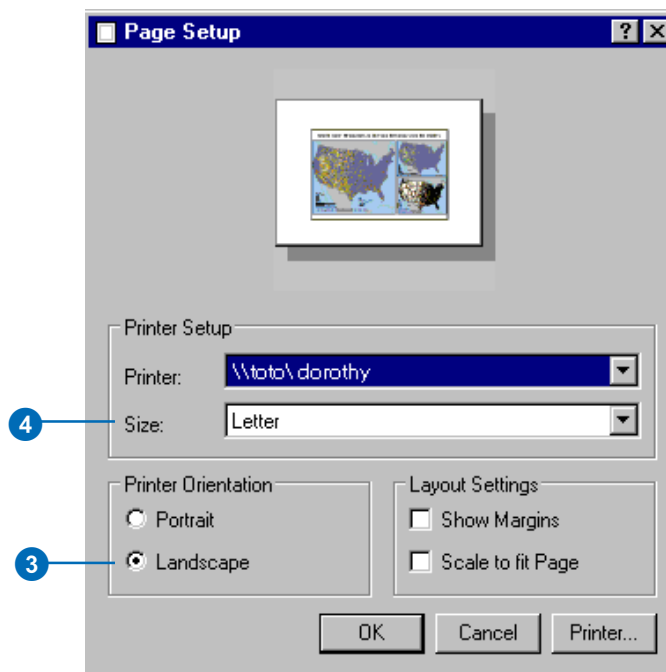


2. If the printer you want to print from is set as your default printer, skip to step 3. Otherwise, click the Printer drop-down arrow and choose the printer to which you want to print your map.

3. Click Landscape.
4. In the Printer Setup box, click the Size dropdown arrow and click Letter (or A4).

Note that it is possible to print this map to a larger or smaller paper size by checking the Scale to fit Page check box in the Page Setup dialog box. The map will scale up or down to fit the page.

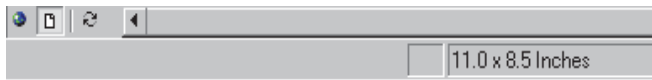
5. Click OK.



Printing a map

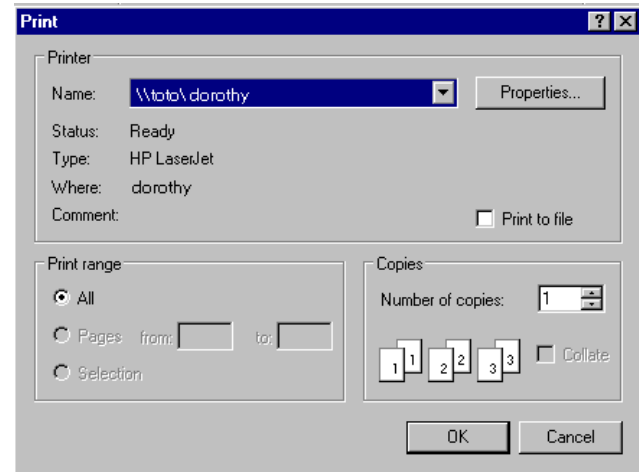
1. Click the Layout View button at the bottom of the map page.

It's important to switch to layout view because the region that is printed can vary depending on which view you are in. Printing in data view will print the currently displayed data frame at the current extent to the selected paper size. The printed data will be scaled to fit the page size you chose in the Page Setup dialog box. When printing from layout view, however, the entire published page is printed. In addition, you will not have the map elements, for example, north arrow and scale bar, if you print from data view instead of layout view.



In Layout view the original page size is displayed on the status bar.

2. Click the File menu and click Print.



3. Click OK.
4. Close the Angelus Oaks Recreation.pmf.

In the previous exercises in this tutorial, you were introduced to viewing, querying, and printing 2D published maps with ArcReader. In the next exercise, you will be introduced to viewing 3D maps in ArcReader.

Exercise 4: Exploring a 3D map

In this exercise, you will open and explore a 3D map published from ArcGlobe that contains 3D views and features. With 3D .pmfs, you are still able to find, measure, identify, use hyperlinks, and swipe layers as you did in the previous exercises with the 2D map. In addition, the 3D globe environment allows for rotating the globe in many directions and flying through various geographic locations.

Starting ArcReader and opening a 3D .pmf

1. Start ArcReader and navigate to your local drive where your tutorial data is stored.
2. Click AngelusOaks3D.pmf and click Open.

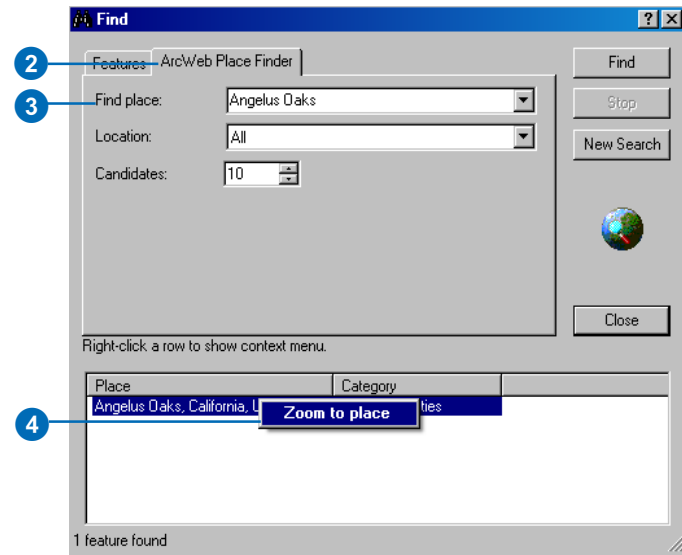
The AngelusOaks3D.pmf opens with a full extent view of the globe. Notice that the Data toolbar is the same as with a 2D .pmf. In addition, there is a new Globe toolbar with tools specifically designed for interacting with 3D maps. The Globe toolbar will be discussed in a future lesson.

Using the ArcWeb Place Finder

The ArcWeb Place Finder enables you to look up places by name and navigate to them in the map. In ArcReader, ArcWeb Place Finder capabilities are available as an additional tab in the Find dialog box. You can search by name; specify the category of locations to search, such as airports or small cities; and decide the number of matching results to return.

Note: An Internet connection is required for the following steps. If you do not have an Internet connection, skip to the next lesson, The Globe toolbar.

1. Click the Find tool to open the Find Dialog box.
2. Click the ArcWeb Place Finder tab.
3. In the Find place text box, type “Angelus Oaks” and click Find. ArcWeb Place Finder finds Angelus Oaks, California, United States.
4. Right-click Angelus Oaks in the Find dialog box, and click Zoom to place. ArcReader zooms to Angelus Oaks.
5. Close the Find dialog box.



You are now looking at the Angelus Oaks area from directly overhead.

In the next sections, you will use the global navigation tools to change your point of view, move the globe in



View of Angelus Oaks from directly overhead

different directions, and fly through the Angelus Oaks area you explored in the 2D exercises.

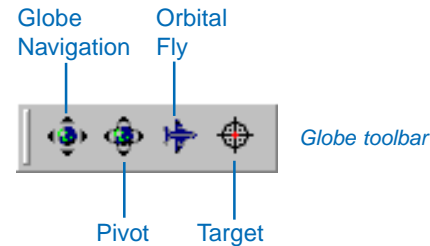
The Globe toolbar

The Globe toolbar has been introduced into ArcReader to enable viewing and navigating 3D globes published from ArcGlobe.

1. Rest the mouse pointer over each tool in the Globe toolbar to see the ToolTip for each.

There are four tools on the Globe toolbar: Globe Navigation, Pivot, Orbital Fly, and Target. In addition, right-clicking the map display with the Globe Navigation, Pivot, or Orbital Fly tools allows you to zoom in and out without having to change tools. Right-clicking the display

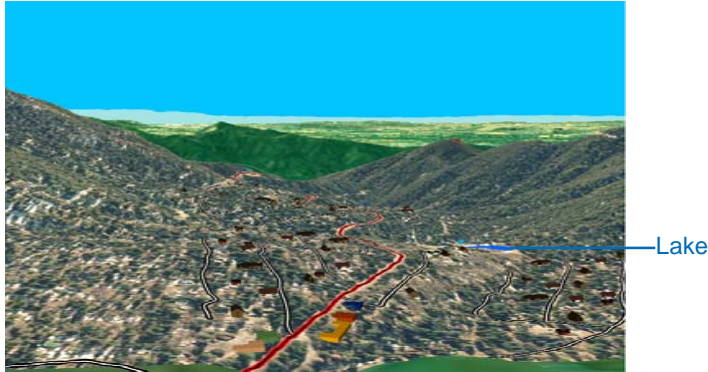
with the Target tool allows you to zoom in and center at a location.



The following steps will show you how to use the Globe Navigation, Pivot, and Target tools. You will use the Orbital Fly tool in the next lesson.

1. Click the Full Extent button to reset the Globe to the original display. Here you will explore the Globe Navigation tool.
2. Click the Globe Navigation tool and click and drag on the display area to move the globe up, down, and to each side.
3. Click View, point to Bookmarks, and click View from North. You are now looking out over Angelus Oaks from the North. Here you will explore the Target and Pivot tools
4. Place a check in the box next to the following layers to turn them on: Landmarks, Houses, City Buildings, California Mountain Peaks, Road, Trails and Creeks, Residential Streets, and Lakes.

- Click the Target tool and click Shadow Lake (shown in blue on the right side of the map display). The lake is now in the center of the display.



View of Angelus Oaks from the north

- With the Target tool still active, right-click the lake. You will zoom to the lake and also see 3D symbols for houses in the area and a picnic area at the lake.



Shadow Lake and surrounding residences

- Click the Pivot tool, then click and drag on the display to see a 360-degree view of the area around the lake. When the Pivot tool is clicked, the object at the center of the display will become the pivot point of the map.

With any of the Globe tools active, you can either roll the mouse wheel or right-click and drag to zoom in and out.

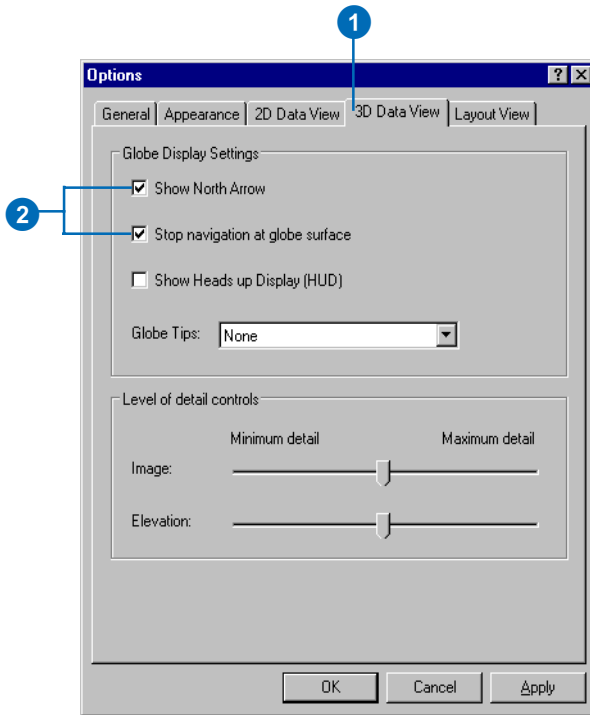
Additional bookmarks are provided in this document. You can use them to explore the region or reset the display after using the Globe toolbar tools.

Navigating the globe with the Orbital Fly panel

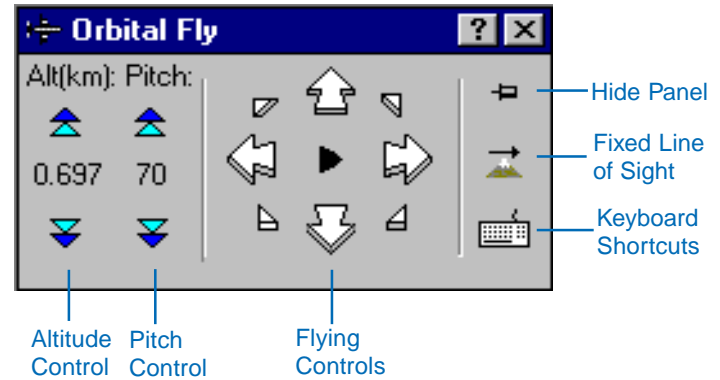
When you click the Orbital Fly tool to begin flying, the Orbital Fly panel will appear. From the Orbital Fly panel you can control altitude, pitch, and flying direction and speed. The Orbital Fly tool looks down from an orbiting object, whereas the existing Fly tool in ArcGlobe gives you the forward-looking view from a flying object.

Flying can be accomplished using the Orbital Fly panel, mouse, keyboard, or a combination of these.

- Click Tools and click Options. Click the 3D Data View tab. This tab allows you to control globe display settings and level of detail settings.
- Check Stop navigation at globe surface and Show North Arrow.
- Click OK to close the Options dialog box.
- Click the Orbital Fly button. The Orbital Fly panel appears.



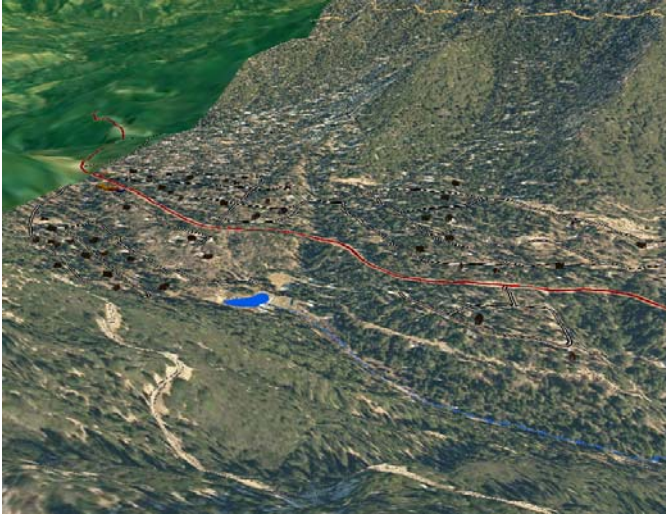
From the Orbital Fly panel, you can start and stop flying, fly in any direction, adjust flying speed, and change altitude and pitch. The up arrow on the Orbital Fly panel will increase forward flying speed. Alternately, the down arrow will reduce speed and begin flying backward. The other arrows will shift the position of the earth as you fly over it either up left, up right, down left, or down right.



There are also three buttons on the right side of the Orbital Fly panel: Hide Panel, Fixed Line of Sight, and Keyboard Shortcuts. Clicking the Hide Panel tool will minimize the dialog box to the title bar while you are flying. Clicking the Fixed Line of Sight button will keep a particular target in the line of sight when flying. Clicking the Keyboard Shortcuts button will show all the keyboard shortcuts for flying.

The Fixed Line of Sight button can be used to control how the observer positions itself in relation to the globe while flying. If the Fixed Line of Sight is turned on, the observer will zoom in and out along the line of sight when the altitude is adjusted. If the Fixed Line of Sight is off, the observer will increase or decrease vertically in relation to the globe surface.

5. Click View, point to Bookmarks, and click View North from Peak. You should now be looking toward the residential area of Angelus Oaks from the top of Constance Peak.



View north from peak

6. Click the Play button on the Orbital Fly panel to begin flying. Experiment with adjusting the altitude and pitch.
7. Click the Stop button to end flying.

Continue to experiment with the Orbital Fly panel tools by navigating around the Angelus Oaks area, and resetting the display using the bookmarks when necessary.

Navigating the globe with the mouse and keyboard

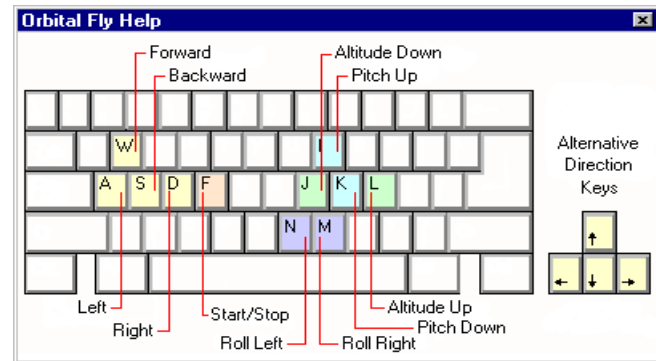
The following lesson will show you how to use the mouse and keyboard instead of the buttons on the Orbital Fly panel. With the mouse, you can control speed and direction, although items such as altitude and pitch still have to be controlled with the Orbital Fly panel. The keyboard contains shortcuts for all flying capabilities and

can be used in conjunction with the mouse to improve the smoothness of the flying experience.

1. Click View, point to Bookmarks, and click View North from Peak.
2. If necessary, click the Orbital Fly tool to ensure that it is active. The Orbital Fly panel will appear, but this time you will use the mouse to start, stop, and direct flying.
3. Click anywhere on the display with the mouse to begin flying.

As you move the mouse up and down in the middle of the display, you will increase your forward and backward flying speeds. As you move the mouse to the left or right, you will change the direction in which you fly.

4. Click again to stop flying, or press the Esc key to end flying.
5. Click the Keyboard button on the Orbital Fly panel to display the keyboard shortcuts for flying.



Keyboard Shortcuts

Notice that you can control the direction of flying with either the directional arrows on your keyboard, or the W, A, S, and D keys. You control the Altitude with the L and J keys, the Pitch with the I and K keys, and the Roll with the N and M keys.

6. Click the Play button on the Orbital Fly panel to begin flying.
7. Use either the directional arrows or the W, A, S, and D keys to control the direction of flight.
8. Press the Altitude up and down keys (L and J) to change altitude while flying.
9. Press the Pitch up and down keys (I and K) to change the pitch while flying.
10. Finally, press the Roll left and right keys (N and M) to roll the globe to the left or right while flying.
11. Click the Stop button on the Orbital Fly panel to stop flying.
12. Close the Orbital Fly panel.

You will notice that the Forward and Backward flying keys will increase and decrease speed similarly to the forward and backward buttons on the Orbital Fly panel.

Once you are familiar with many of the keyboard shortcuts to flying, it is often easiest to use the keyboard and the mouse together to fly. For instance, you can begin flight and control the direction of flight with the mouse while controlling the altitude, pitch, and roll with the keyboard.

Viewing an animation

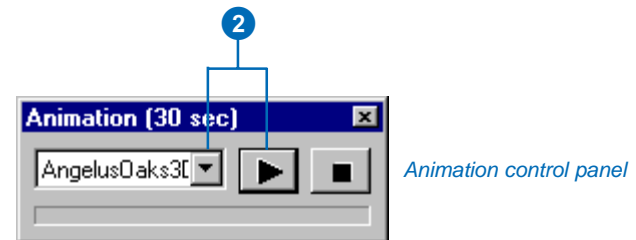
Animations make a 3D document come alive by storing actions so they can be replayed. They can help you visualize changes, such as perspective and geographical movements. Animations are created in ArcGlobe by the map publisher.

1. Click View and click Animations.

The Animation control panel will appear. Animations the publisher has saved with the map will be displayed in a drop-down list on the control panel.

The animation flies you to the Angelus Oaks area that you viewed as a 2D map in exercise 2 of this tutorial. The animation may need to be run several times to improve the overall smoothness with which it displays.

2. Click the drop-down list, click AngelusOaks3D, and click the Play button.



3. Place a check in the box next to the following layers to turn them on: Landmarks, Houses, City Buildings, California Mountain Peaks, Road, Trails and Creeks, Residential Streets, and Lakes.
4. Close the Animation control panel when you are finished.

These lessons provided an overview of the various functionality available in ArcReader for viewing 3D globes. Additional information can be found in the ArcReader Desktop Online Help and the ArcReader product page located at www.esri.com/ArcReader.