

66°15'E

66°30'E

66°45'E

67°E

26⁰⁰⁰⁰

27⁰⁰⁰⁰

28⁰⁰⁰⁰

29⁰⁰⁰⁰

30⁰⁰⁰⁰

31⁰⁰⁰⁰

32⁰⁰⁰⁰

33⁰⁰⁰⁰

397⁰⁰⁰⁰

396⁰⁰⁰⁰

395⁰⁰⁰⁰

394⁰⁰⁰⁰

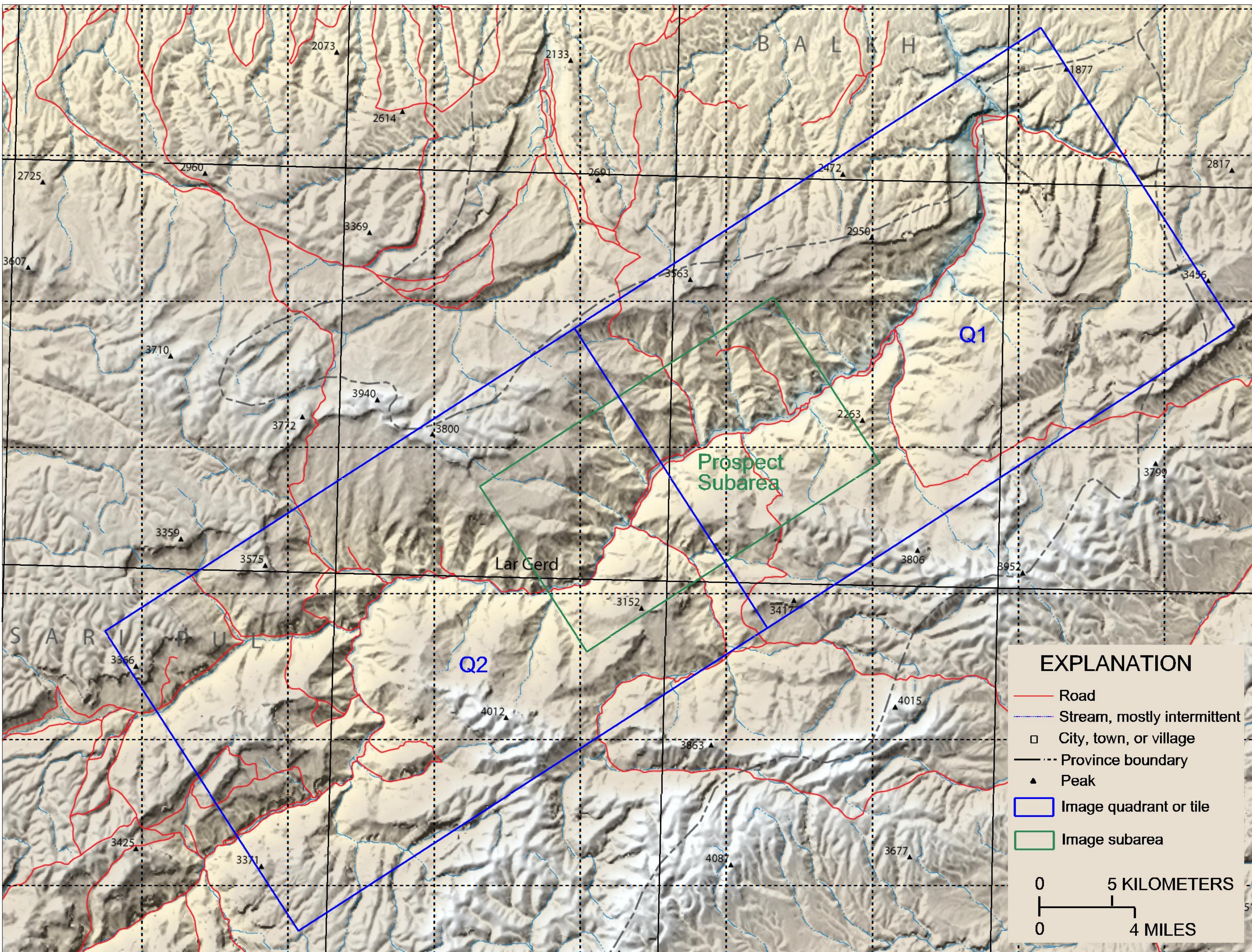
393⁰⁰⁰⁰

392⁰⁰⁰⁰







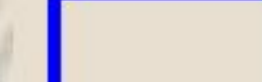
391⁰⁰⁰⁰

35°45'N

35°30'N



EXPLANATION

-  Road
-  Stream, mostly intermittent
-  City, town, or village
-  Province boundary
-  Peak
-  Image quadrant or tile
-  Image subarea

