

68°15'E

68°30'E

68°45'E

69°E

43⁵⁰⁰⁰

45⁰⁰⁰⁰

46⁵⁰⁰⁰

48⁰⁰⁰⁰

49⁵⁰⁰⁰

37°N

409⁵⁰⁰⁰

408⁰⁰⁰⁰

36°45'N

406⁵⁰⁰⁰

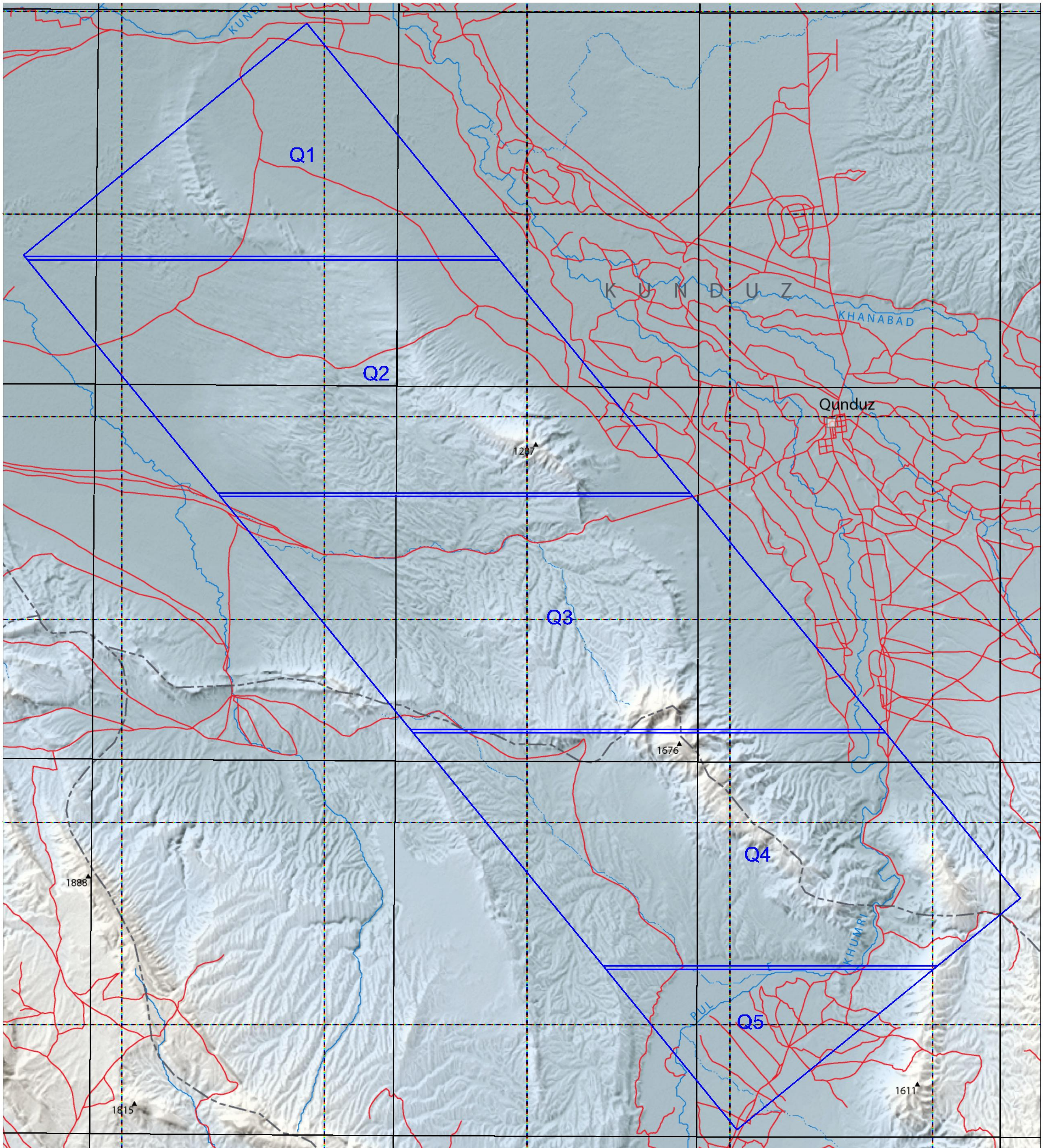
405⁰⁰⁰⁰

36°30'N

403⁵⁰⁰⁰

402⁰⁰⁰⁰

36°15'N



EXPLANATION

- Road
- - - Stream, mostly intermittent
- City, town, or village
- Province boundary
- ▬ Image quadrant or tile
- ▲ Peak

