

66°E

66°15'E

66°30'E

66°45'E

67°E

67°15'E

22⁰⁰⁰⁰

23⁰⁰⁰⁰

24⁰⁰⁰⁰

25⁰⁰⁰⁰

26⁰⁰⁰⁰

27⁰⁰⁰⁰

28⁰⁰⁰⁰

29⁰⁰⁰⁰

30⁰⁰⁰⁰

31⁰⁰⁰⁰

32⁰⁰⁰⁰

33⁰⁰⁰⁰

34⁰⁰⁰⁰

34°15'N

379⁰⁰⁰⁰

378⁰⁰⁰⁰

377⁰⁰⁰⁰

34°N

376⁰⁰⁰⁰

375⁰⁰⁰⁰

374⁰⁰⁰⁰

33°45'N

373⁰⁰⁰⁰

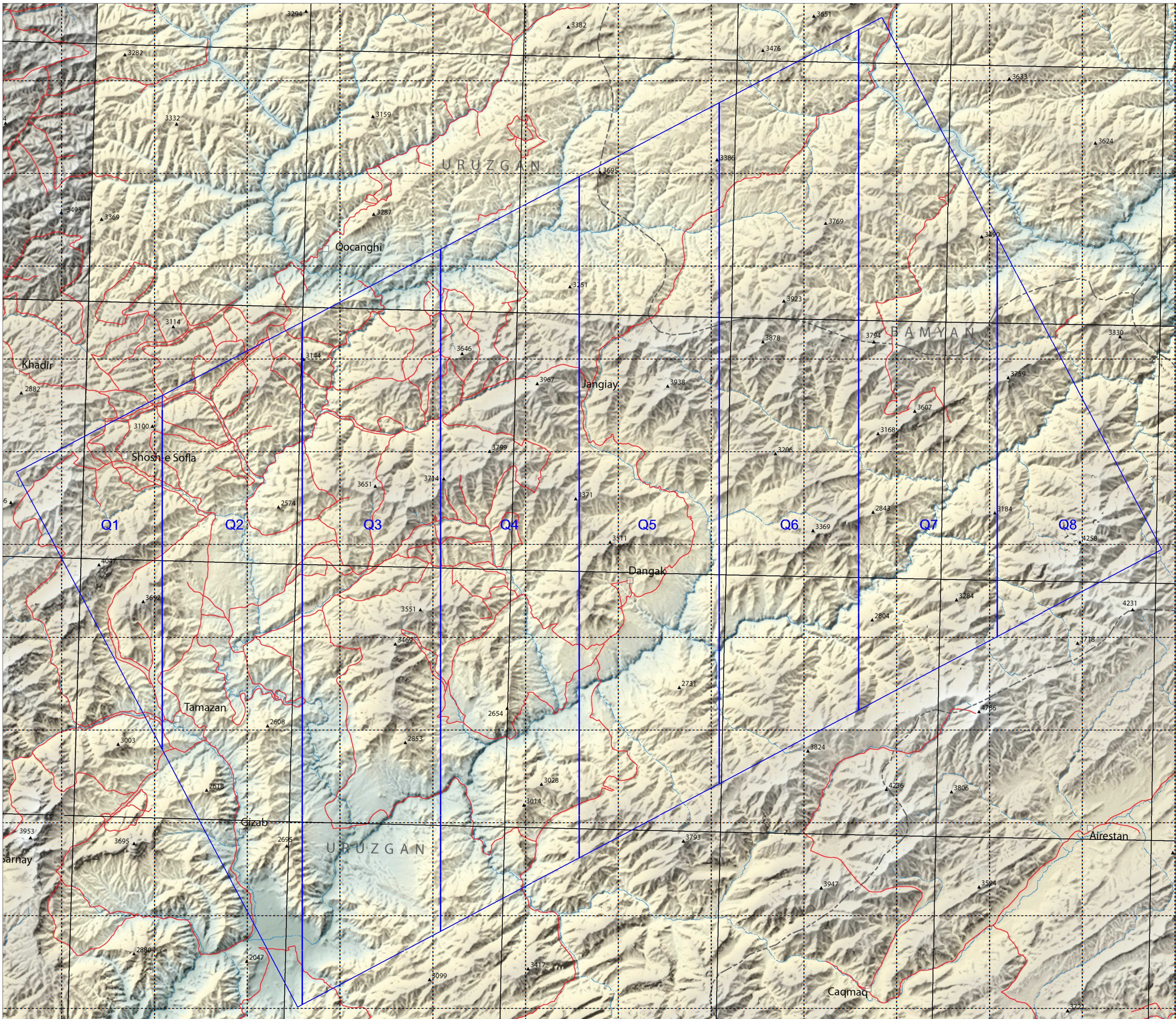
372⁰⁰⁰⁰

371⁰⁰⁰⁰

33°30'N

370⁰⁰⁰⁰

369⁰⁰⁰⁰



EXPLANATION

- Road
- Stream, mostly intermittent
- City, town, or village
- Province boundary
- ▲ Peak
- Image quadrant or tile

