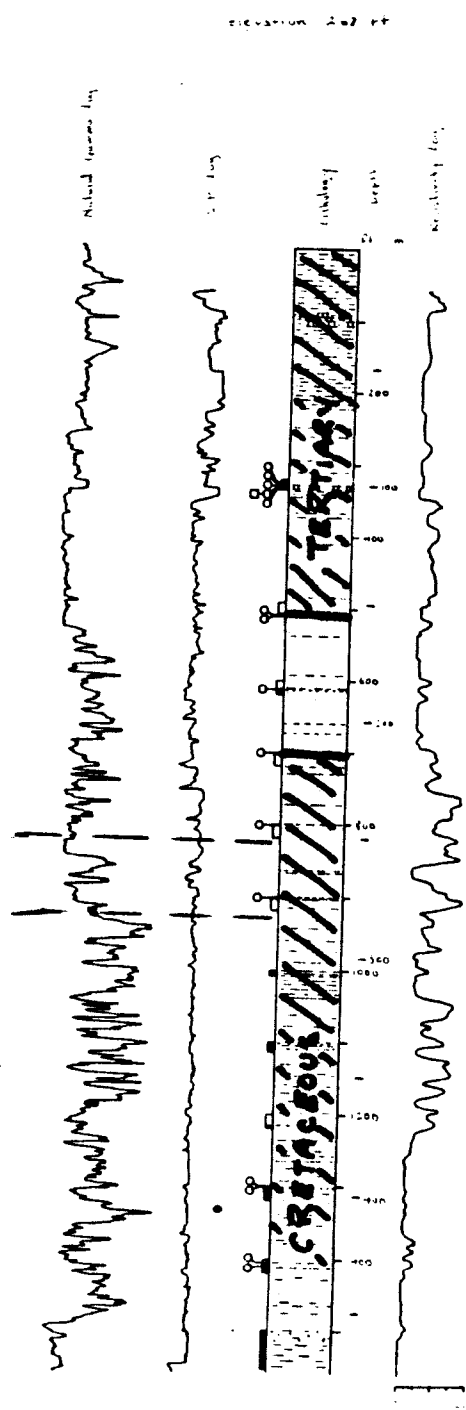
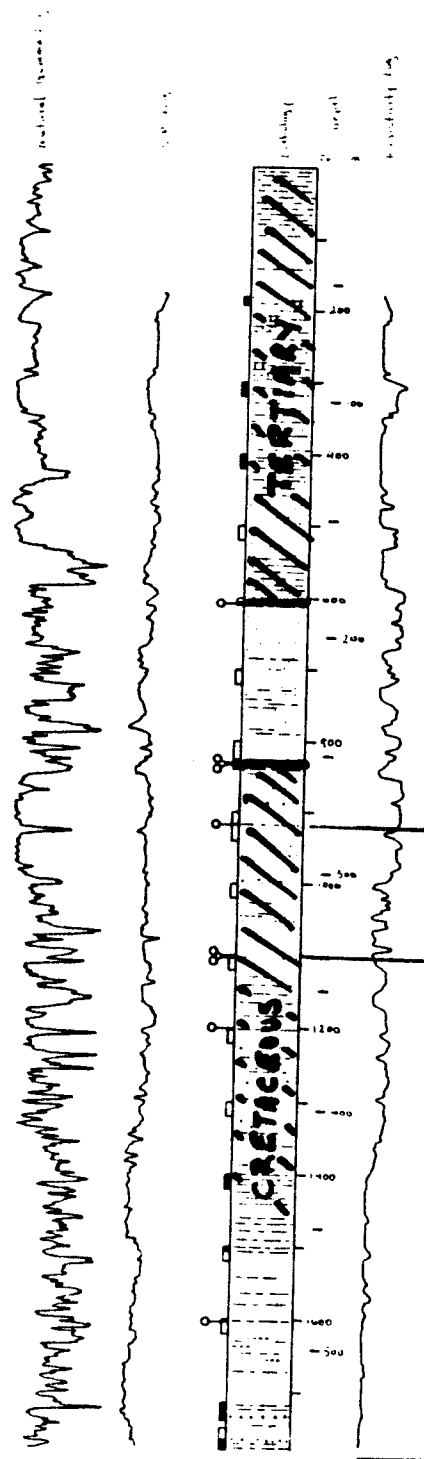


Well Name:

Wrightsville
elev. 355'

Table 1.

Unit	Position	Depth	Elevation
Water Table	top		
	bottom		
Upper Floridan confining	top		
	bottom		
Upper Floridan aquifer	top		
	bottom		
Middle Floridan Confining	top		
	bottom		
Middle Floridan aquifer	top		
	bottom		
Lower Floridan Confining	top	225	130
	bottom		
Lower Floridan Aquifer	top	441	-86
	bottom		
C	top		
	bottom		
A	top		
	bottom		
Upper Dublin Confining	top	541	-186
	bottom		
Upper Dublin aquifer	top	689	-334
	bottom		
Lower Dublin Confining	top	785	-430
	bottom		
Lower Dublin aquifer	top	852	-497
	bottom		
Upper Midville Confining	top	999	-644
	bottom		
Upper Midville aquifer	top	1168	-813



- EXPLANATION
- Negative sample
 - Benchmark sample
 - Minimum sample
 - ▨ Clay
 - ▧ Silt
 - Sand
 - ▤ gravel
 - ▩ Limestone
 - ▨ Lignite
 - ▭ Core interval (see note)
 - ▬ Core interval (see note)