

PRELIMINARY JOIDES CORE LOG-HOLE 5

AREA: Upper part of the Florida-Hatteras Continental Slope east of Jacksonville, Florida.

LAT. 30° 23' N LONG. 80° 08' W DATE 4/-22-26/65

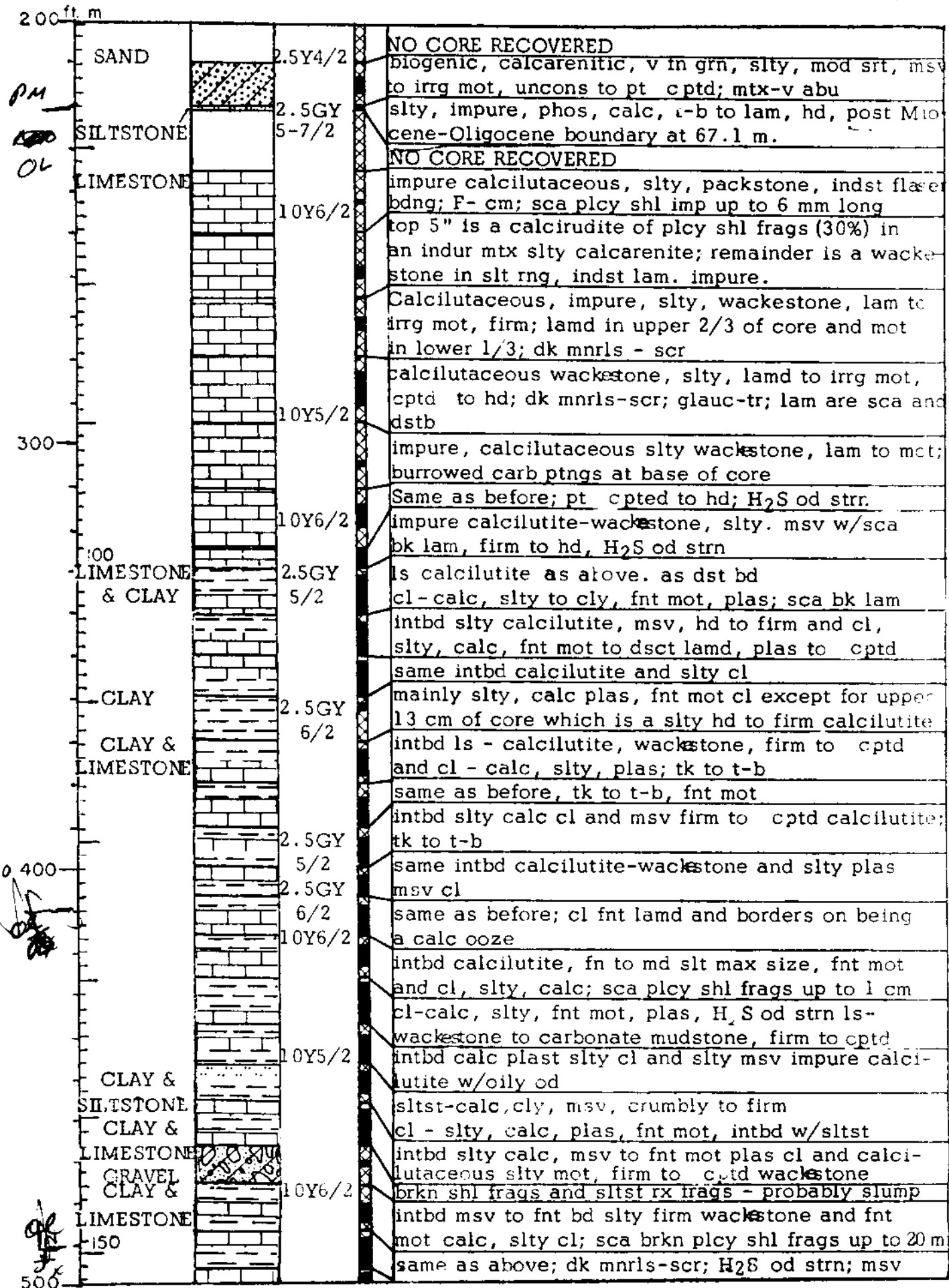
LOGGER(S) Schlee, Manheim, Wait, Shuter DEPTH 190 m.

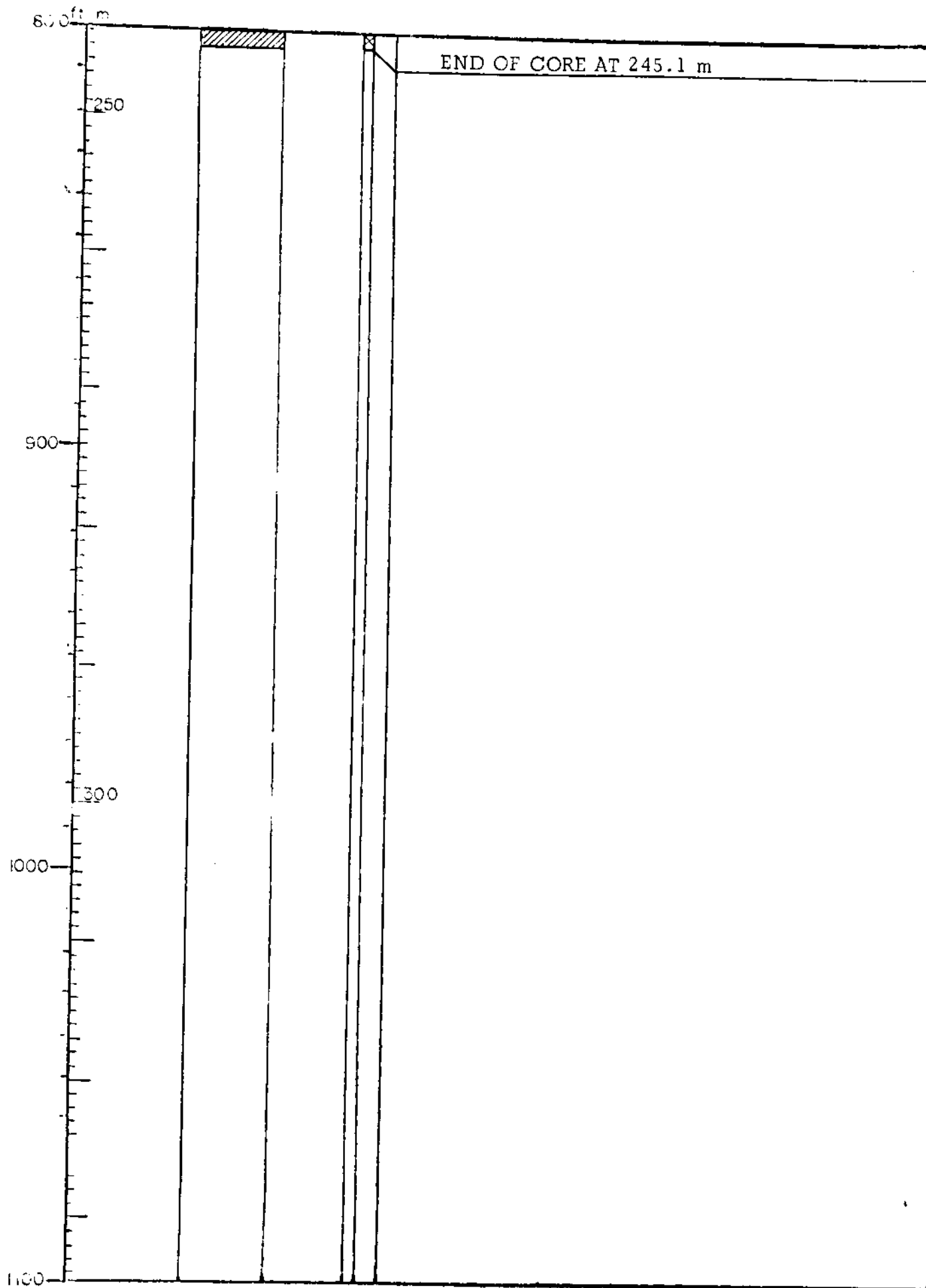
REMARKS: Redrilled three times to achieve depth of 244.8 m.

*NO
AQUIFER*

ft	Classification	Graphic Log	Color	Rec	Description
0	SILT (surface)		10Y4/2		sdly to cly, sl calc, uncons; sd toward base; brkn shl frags; F.
					biogenic, calcarenitic, v crs grn to fn grv, mod srt, phos, uncons; brkn shl frags, F, Pt; slt mtxpel-phos
	SAND		10Y5/1 spec		NO CORE RECOVERED
					calc, slty to cly, msv, uncons; glauc-scr, dk gn-blk; qtz-abund slt to fn sd; shl frag & F-cm-abu.
			10Y5/2		slty, biogenic, calcarenitic, strn H ₂ S od; F-fld; qtz-scr, v fn grn, sbang to sbrd; shl frags of Pt and plcy (to 2 mm); glauc-scr to cm, w srt, in F tests
					NO CORE RECOVERED
					biogenic calcarenitic, v fn grn, slty, uncons; F-fld; plcy shl frags-cm, brkn, thn shl up to 2 mm; qtz-cm
					biogenic calcitutaceous, pry srt, msv w/sca mot; F-abu; shl frags-cm; qtz-v fn grn.
100	SILT		7.5Y6/2		slty, biogenic calcarenitic, msv, uncons to pt cptd; H ₂ S od; F, Ost, Ech; glauc-scr to cm, v. fn grn;
	SAND		2.5GY6/2		qtz-abu.
			10Y5/2		biogenic calcarenitic, slty, msv, uncons, H ₂ S od; glauc-in fn sizes, abu; F, Ost, Ech, gstr- v abu.
					biogenic calcarenitic, v fn grn, slty mtx, uncons; F, Ost, gstr, brkn shl frags-abu; glauc-cm; qtz-abu
					biogenic, calcarenitic slty, pry srt, msv, plas to uncons; glauc-abu; shl frags - v abu, brkn, srt,
	SILT		10Y4/4		
	CLAY & SAND		10Y5/4		biogenic calcitutaceous, sdly to cly, sca mot, plas to pt cptd, pt stratified, H ₂ S od; horn corals
50	SAND		10Y6/2		slty, pt calc, plas to firm; glauc-abu; sd-abu, calc debris; layers of biogenic calcarenitic slty sd; H ₂ S od
	SILT		10Y5/3		biogenic calcarenitic, slty to cly, H ₂ S od, uncons to plas; glauc-abu; F & shl frag abu; cly mtx in low
			2.5GY5/2		calc sdly, msv, plas to frm, H ₂ S od; fn calc mtx;
	SAND & SILT		2.5GY6/2		same as above; irrq mot
200					calcarenitic slty, por, plas to firm; mtx-abu; F-abu

*PM
MMO*





END OF CORE AT 245.1 m

800 ft m

250

900

300

1000

1100