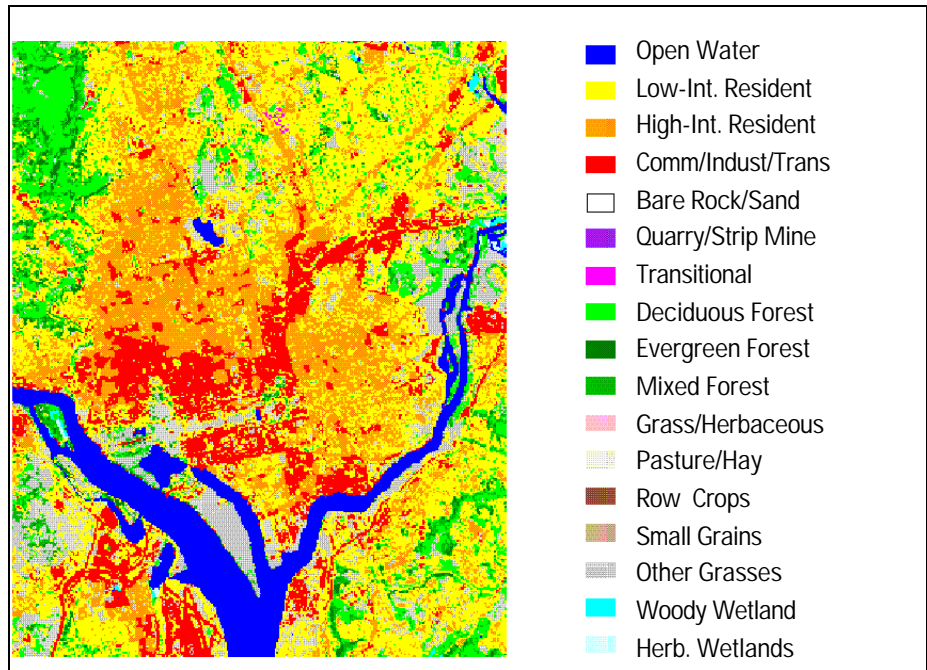


National Land Cover Dataset

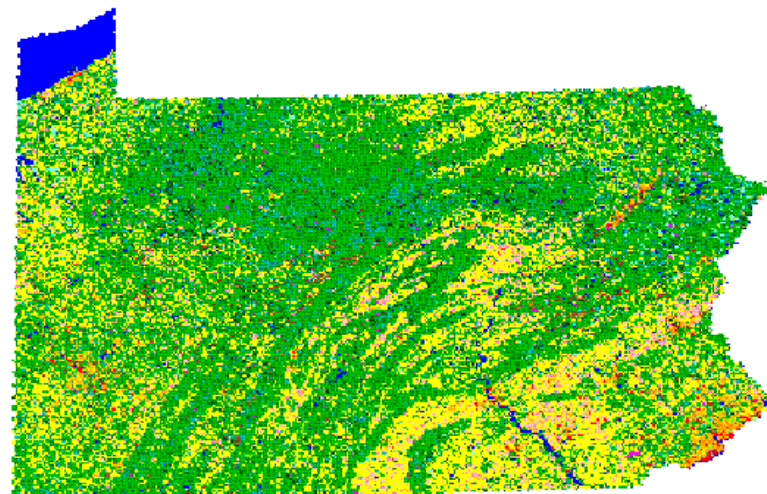
The U.S. Geological Survey (USGS), in cooperation with the U.S. Environmental Protection Agency, has produced a land cover dataset for the conterminous United States on the basis of 1992 Landsat thematic mapper imagery and supplemental data. The National Land Cover Dataset (NLCD) is a component of the USGS Land Cover Characterization Program. The seamless NLCD contains 21 categories of land cover information suitable for a variety of State and regional applications, including landscape analysis, land management, and modeling nutrient and pesticide runoff. The NLCD is distributed by State as 30-meter resolution raster images in an Albers Equal-Area map projection.

Data Classification System Key

- 11 Open Water
- 12 Perennial Ice/Snow
- 21 Low-Intensity Residential
- 22 High-Intensity Residential
- 23 Commercial/Industrial/Transportation
- 31 Bare Rock/Sand/Clay
- 32 Quarries/Strip Mines/Gravel Pits
- 33 Transitional
- 41 Deciduous Forest
- 42 Evergreen Forest
- 43 Mixed Forest
- 51 Shrubland
- 61 Orchards/Vineyards/Other
- 71 Grasslands/Herbaceous
- 81 Pasture/Hay
- 82 Row Crops
- 83 Small Grains
- 84 Fallow
- 85 Urban/Recreational Grasses
- 91 Woody Wetlands
- 92 Emergent Herbaceous Wetlands



Detailed example of National Land Cover Dataset, Washington, D.C.



Pennsylvania land cover data.

Available Products

State data files are available on compact disc as Geo-TIFF.

Information

An online description of the USGS Land Cover Characterization Program and the NLCD is available at edcwww.cr.usgs.gov/programs/lccp.

For more information, contact Customer

Services:

Earth Science Information Center
 EROS Data Center
 Sioux Falls, SD 57198
 Telephone: 605-594-6151
 Fax: 605-594-6589
 E-mail: custserv@usgs.gov

For information on these and other USGS products and services, call 1-888-ASK-

USGS, use the Ask.USGS fax service, which is available 24 hours a day at 703-648-4888, or visit the general interest publications Web site on mapping, geography, and related topics at mapping.usgs.gov/mac/isb/pubs/publists/.

For additional information, visit the ask.usgs.gov Web site or the USGS home page at www.usgs.gov.