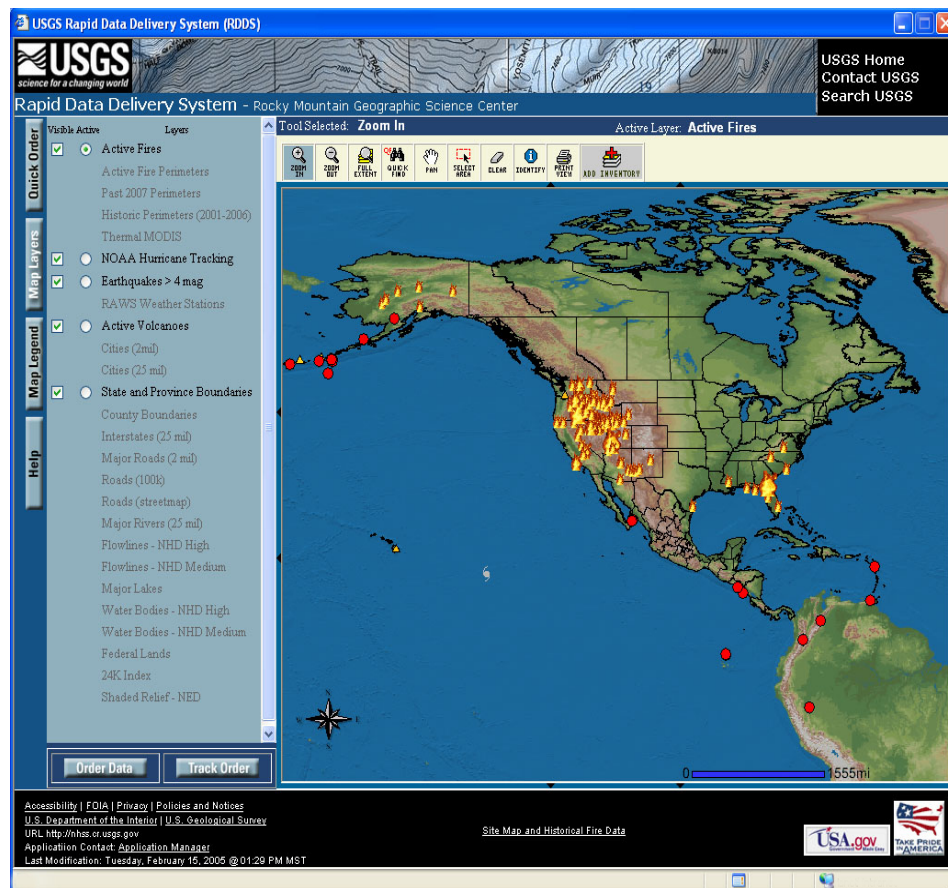


Rapid Data Delivery System (RDDS)

Rocky Mountain Geographic Science Center

Rapid Data Access for Emergency Response

Since the start of the active 2000 summer fire season, the U. S. Geological Survey (USGS) Rocky Mountain Geographic Science Center (RMGSC) has been actively engaged in providing crucial and timely support to Federal, State, and local natural hazards monitoring, analysis, response, and recovery activities. As part of this support, RMGSC has developed the Rapid Data Delivery System (RDDS) to provide emergency and incident response teams with timely access to geospatial data. The RDDS meets these needs by combining a simple web-enabled data viewer for the selection and preview of vector and raster geospatial data with an easy to use data ordering form. The RDDS viewer also incorporates geospatial locations for current natural hazard incidents, including wildfires, earthquakes, hurricanes, and volcanoes, allowing incident responders to quickly focus on their area of interest for data selection.



Features

The RDDS provides a password protected portal for the selection and downloading of vector and raster data that allows users to quickly specify an Area of Interest (AOI) and download the data directly into a Geographic Information System (GIS) application. Through an easy to use pop-up order form, selected vector layers are zipped together into a compressed file and made available for downloading through an instant notification. A wide-range of raster layers such as orthoimagery, digital raster graphics (USGS topographic maps), and digital elevation and shaded-relief models are also made available through the order form, with the flexibility to re

Initial extent showing current natural hazard incidents (above).

project, mosaic, and reformat the data through the desired user selections. Once the raster data has been submitted and processed, an e-mail notification is sent to the user indicating an ftp link from which the data can be downloaded.

The RDDS contains the following geospatial data layers:

Incident Support Layers

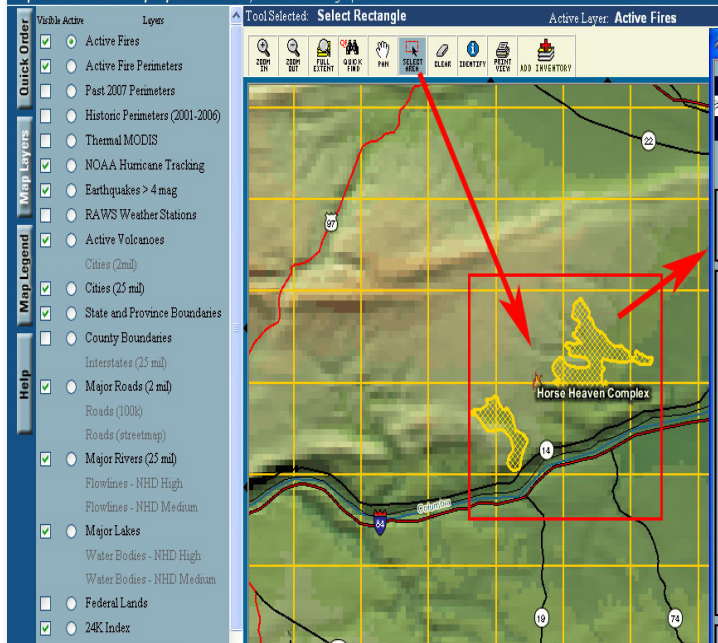
- Active Earthquakes >4 magnitude
- Active Volcanoes
- Active Wildfires
- Active Wildfire Perimeters
- Historic Fire Perimeters (2001 -

previous year)

- Thermal MODIS
- Remote Automated Weather Stations

Base Map Layers

- Shaded Relief (color, NED)
- Administrative Data (States, cities, counties)
- Roads with Signs
- Water Bodies and Rivers
- Federal Lands
- 24k Topographic Map Index



Select the desired area (above), then select the product layers you want using the RDDS Order Form (right).

Downloadable Raster Products

- Digital Elevation Model
- Shaded Relief
- Orthoimagery (1m color IR, Natural color IR)
- Digital Raster Graphics (24k topographic maps)

Summary

The RDDS demonstrates one way in which the RMGSC is committed to providing fast and reliable access to geospatial data in order to assist Federal, State, and local first responders. The ease of use and access to integrated data provided by the RDDS is key to a tactical emergency responder's ability to quickly prepare and respond to national emergencies.

Contact

Jill Cress, Computer Scientist
United States Geological Survey
Rocky Mountain Geographic Science Center
Denver Federal Center
Lakewood, CO 80225
e-mail: jjcress@usgs.gov

USGS Data Delivery System - Microsoft Internet Explorer

USGS Rapid Data Delivery System - Order Form

* - required information

☒ Click on box to select product(s). ☐ Product not available at current map scale.

GEOGRAPHIC EXTENT

*Upper Lft Lat: 46.023672766470455 *Lower Rht Lat: 45.6869164094226
*Upper Lft Lon: -120.30197031568865 *Lower Rht Lon: -119.9406107544726

DESIRED VECTOR PRODUCTS

☐ Active Fires ☐ County Boundaries
☐ Active Fire Perimeters ☐ Interstates (25 mil)
☐ Past 2007 Perimeters ☐ Major Roads (2 mil)
☐ Historic Perimeters (2001-2006) ☐ Roads (100k)
☐ Thermal MODIS ☐ Roads (streetmap) downloadable for download
☐ NOAA Hurricane Tracking ☐ Major Rivers (25 mil)
☐ Earthquakes > 4 mag ☐ Flowlines - NHD High
☐ RAWS Weather Stations ☐ Flowlines - NHD Medium
☐ Active Volcanoes ☐ Major Lakes
☐ Cities (25m) ☐ Water Bodies - NHD High
☐ Cities (25 mil) ☐ Water Bodies - NHD Medium
☐ State and Province Boundaries ☐ Federal Lands
☐ 24K Index

DESIRED DATA PROJECTION FOR RASTER PRODUCTS

☐ UTM ☐ ALBERS ☐ GEOGRAPHIC

DESIRED RASTER PRODUCTS

☐ Click to Preview raster product. This may take several seconds to create.

☐ TopoMap 1.24K [drg] ☐ Inventory **Ortho Imagery:**
☐ Shaded Relief [sr] ☐ Inventory ☐ Black/White - 1m [bw1m] ☐ Inventory
☐ SR/TopoMap Blend [blend] ☐ Inventory ☐ Color Infrared - 1m [cir1m] ☐ Inventory
☐ DEM [dem] ☐ Inventory ☐ Natural Color - 1m [nc1m] ☐ Inventory

☐ FIRE BEHAVIOR LAYERS (click to view available layers)

DESIRED OUTPUT FORMAT FOR RASTER PRODUCTS

Geo Tiff (default): ☒ JPEG ☐ (DEM and Fire Behavior Layers export as ASCII Grid only.)

DELIVERY METHOD AND ORDER NAME FOR RASTER PRODUCTS

☐ FTP ☐ CD/DVD ORDER NAME:
(default: lastname_firstname, product abbreviation will be appended to order name, i.e. smith_john_[DRG])

CONTACT INFORMATION

*First Name: Cell Phone:
*Last Name: *Email:
*Office Phone: *Email(confirm):

ORDER DATA

Susan Goplen, Information Technology Specialist
United States Geological Survey
Rocky Mountain Geographic Science Center
Denver Federal Center
Lakewood, CO 80225
e-mail: segoplen@usgs.gov

URL: <http://rmgsc.cr.usgs.gov/rdds>

