

In cooperation with the Wyoming Department of Agriculture (WDA) and the Wyoming Department of Environmental Quality (WDEQ)

Pesticides in Ground Water - Platte County, Wyoming, 2000-01

In 1991, members of local, State, and Federal governments, as well as industry and interest groups, formed the Ground-water and Pesticide Strategy Committee to prepare the State of Wyoming's generic Management Plan for Pesticides in Ground Water. Part of this management plan is to sample and analyze Wyoming's ground water for pesticides. In 1995, the U.S. Geological Survey, in cooperation with the Ground-water and Pesticide Strategy Committee, began statewide implementation of the sampling component of the State of Wyoming's generic Management Plan for Pesticides in Ground Water. In 2000, baseline monitoring began in Platte County.

PESTICIDES IN GROUND WATER

Synthetic organic pesticides are used to control weeds, insects, and other organisms in a wide variety of agricultural and nonagricultural settings. The use of pesticides has helped to make the United States the world's largest producer of food (Barbash and Resek, 1996). Pesticide use, however, has also been accompanied by concerns about potential adverse effects on the environment and human health. A potential pathway for the transport of pesticides is through hydrologic systems, which supply water

for both humans and natural ecosystems. Water is one of the primary ways pesticides are transported from an application area to other locations in the environment (fig. 1) (Barbash and Resek, 1996).

Pesticide contamination of ground water is a national issue because of the widespread use of pesticides, the expense and difficulty of remediating ground water, and the fact that ground water is used for drinking water by about 50 percent of the Nation's population. Concern about pesticides in ground water is especially acute in rural agricultural areas

where over 95 percent of the population relies upon ground water for their drinking water (Solley and others, 1998), although application rates and the variety of pesticides used may be greater in urban areas.

WYOMING'S PESTICIDE MANAGEMENT PLAN

The Ground-water and Pesticide Strategy Committee (GPSC) has developed the generic State Management Plan for Pesticides in Ground Water for the State of Wyoming (SMP) (Wyoming Ground-water and Pesticides Strategy Committee, 1999). The SMP is required by the U.S. Environmental Protection Agency in order for individuals and organizations to continue using certain pesticides in Wyoming. The SMP includes information relating to individuals and organizations involved with the implementation of the SMP, methods of preventing ground-water contamination, ground-water monitoring, and what the responses will be if pesticides are detected in ground water.

One critical part of the SMP is ground-water monitoring. The ground-water monitoring program has two phases. The first phase involves baseline monitoring, which is designed to determine what pesticides, if any, have leached into the county's ground water. The second phase is problem identification monitoring, which is used to gather more information about the ground water near wells with significant pesticide detections.

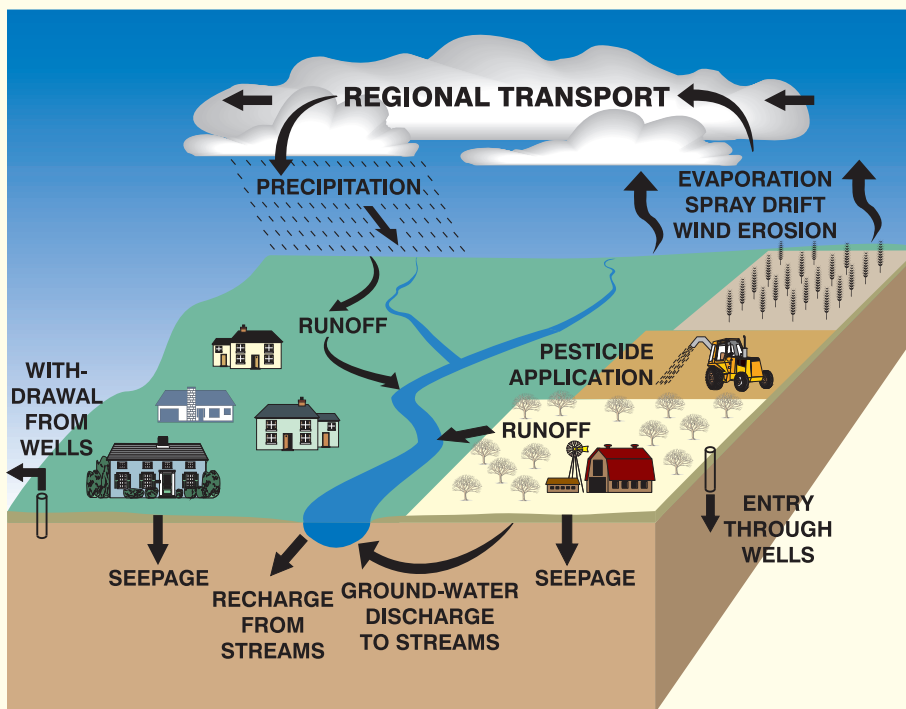


Figure 1. Pathways of pesticide movement in the hydrologic cycle (modified from Barbash and Resek, 1996).

Table 1. Baseline monitoring for pesticides in Platte County, late summer/fall 2000 and spring 2001.

[$\mu\text{g/L}$, micrograms per liter; NA, not applicable; E, estimated]

| Pesticide | Pesticide trade name | Pesticide action ¹ | Number of detections/ number of samples ² | Laboratory minimum reporting limit ³ ($\mu\text{g/L}$) | Maximum concentration ($\mu\text{g/L}$) | Average concentration of detections ⁴ ($\mu\text{g/L}$) | Safe drinking water standard ⁵ ($\mu\text{g/L}$) |
|--|---------------------------------|-------------------------------|--|---|---|--|---|
| Focal pesticides detected in Platte County ground water | | | | | | | |
| Atrazine | Aatrex | Selective herbicide | 6/24 | 0.01 | 0.1 | E0.03 | 3 |
| Bromacil | Hyvar XL | Herbicide | 2/24 | 0.09 | 1 | 1 | ⁶ 90 |
| 2,4-D | 2,4-D | Selective herbicide | 1/24 | 0.1 | E0.04 | NA | 70 |
| Picloram | Tordon | Systemic herbicide | 4/24 | 0.09 | 3 | E1 | 500 |
| Tebuthiuron | Spike | Herbicide | 2/24 | 0.02 | 0.07 | 0.05 | ⁶ 500 |
| Non-focal pesticides detected in Platte County ground water | | | | | | | |
| Prometon | Pramitol | Non-selective herbicide | 4/24 | 0.02 | 0.04 | E0.01 | ⁶ 100 |
| Focal pesticides not detected in Platte County ground water | | | | | | | |
| Alachlor | Aldicarb Sulfone ⁷ | Clopyralid | DCPA | Hexazinone | Metribuzin | Telone | |
| Aldicarb | Aldicarb Sulfoxide ⁷ | Cyanazine | Dicamba | Metolachlor | Simazine | | |
| Focal pesticides not analyzed in Platte County ground water (no method of analysis available) | | | | | | | |
| | | Difenzoquat | | Metsulfuron | | | |

¹Meister (1996)

²Each of the 12 wells was sampled twice.

³The laboratory minimum reporting limit is the lowest concentration at which a pesticide concentration can be quantified without estimation.

⁴The average concentration is noted as E, estimated, if one or more values used in the calculation was an estimated value.

⁵EPA Maximum Contaminant Level unless otherwise noted (U.S. Environmental Protection Agency, 1996).

⁶EPA Lifetime Health Advisory Level (U.S. Environmental Protection Agency, 1996).

⁷Degradation product of Aldicarb.

Baseline monitoring is prioritized by a county rank and the vulnerability of the county's ground water to pesticides. During the development of the SMP, the GPSC evaluated each county in Wyoming to determine the potential vulnerability of the county's ground water to pesticides. Each county was ranked based on the extent of cropland and urban areas in the county, as well as the amount of pesticides sold within the county in 1991 (Wyoming Ground-water and Pesticides Strategy Committee, 1999).

A ground-water vulnerability map was prepared for the uppermost or shallowest aquifer (Hammerlink and Arneson, 1998). A Geographic Information System was used to overlay seven layers describing hydrogeology and land use. The map was used to assist in the selection of monitoring sites in each county. The monitoring focuses on areas where the ground water is most vulnerable.

The GPSC selected 18 pesticides (focal pesticides) and 2 degradation products to be sampled as part of the

SMP (table 1). The chemical analysis used to detect the focal pesticides can also detect 66 other pesticides and degradation products. Any additional pesticides detected are listed in table 1 as non-focal pesticides. Ground water from all wells in the baseline monitoring program was analyzed for the pesticides listed in table 1, with the exception of difenzoquat and metsulfuron, for which analytical methods were not available.

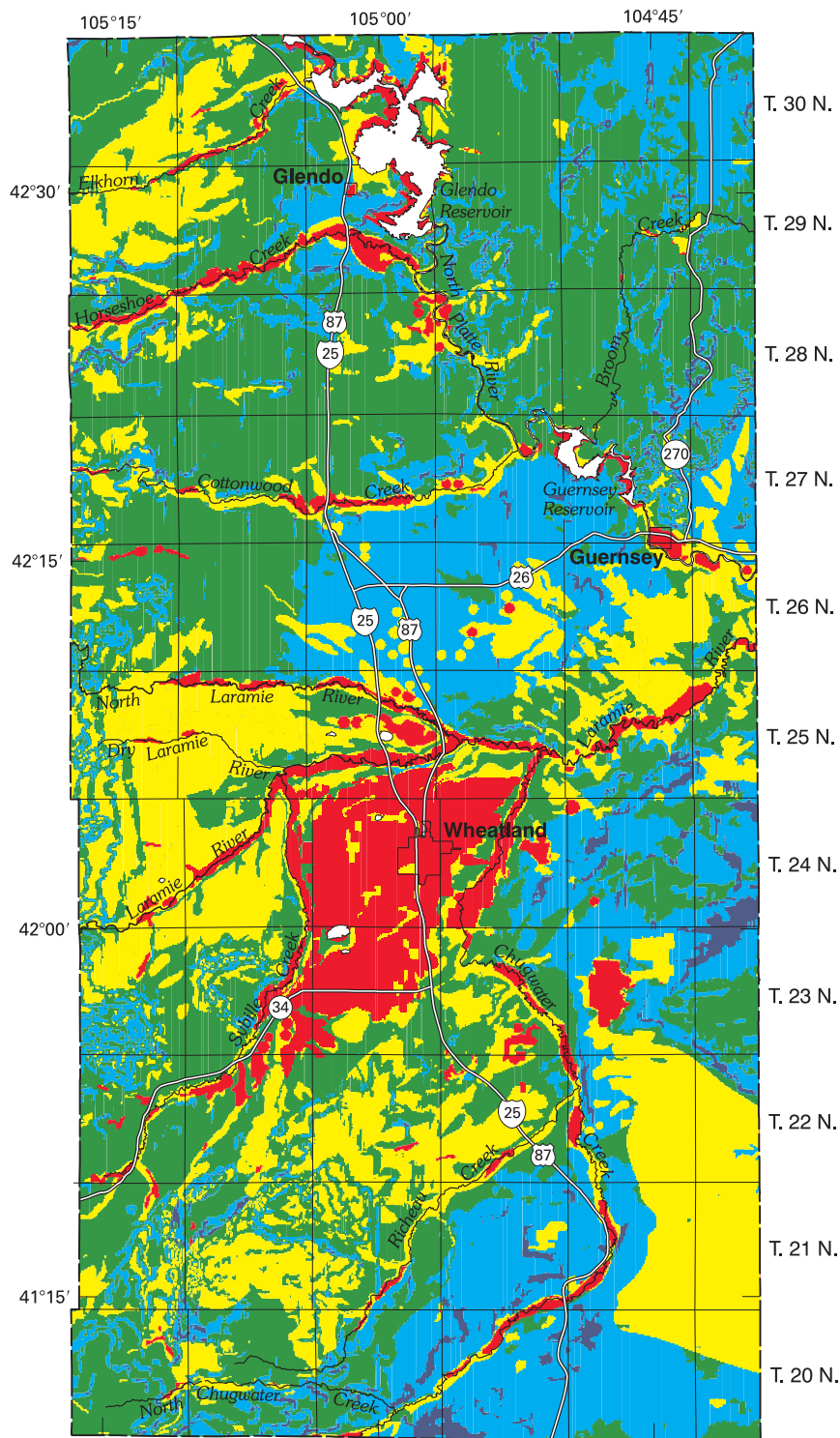
The goal of the ground-water sampling part of the SMP is to collect ground-water samples for pesticide analyses in all 23 Wyoming counties. To date, sampling has been completed in Goshen (1995-96), Park (1997), Washakie (1997-98), Fremont (1998-99), Lincoln (1998-99), Laramie (1998-99), Big Horn (1999-2000), Sheridan (1999-2000), Platte (2000-01), Johnson (2000-01), and Crook (2000-01) Counties. Sampling is currently being conducted in Natrona, Sweetwater, and Teton Counties.

GROUND-WATER MONITORING IN PLATTE COUNTY

The ground water in Platte County was ranked ninth most vulnerable to pesticide contamination in Wyoming (Wyoming Ground-water and Pesticide Strategy Committee, 1999). The vulnerability map for Platte County (fig. 2) (Hammerlink and Arneson, 1998) identifies shallow alluvial and terrace deposits, as well as Quaternary sand and loess deposits as the most vulnerable in the county.

Twelve wells were selected in Platte County (fig. 3) for baseline monitoring. All wells were located in the Quaternary deposits deemed most vulnerable (shown as red in fig. 2). The wells were selected with the assistance of the Platte County Conservation District. All wells were sampled twice, in late summer or fall 2000 and spring 2001.

Five of the 18 focal pesticides and 1 non-focal pesticide were detected in Platte County (table 1). Pesticides were detected in 6 of the 12 wells sampled in



R. 70 W. R. 69 W. R. 68 W. R. 67 W. R. 66 W. R. 65 W.

Base modified from U.S. Geological Survey Wyoming State base map, 1:500,000, 1980 Lambert Conformal Conic projection Standard parallels 33° and 45°, central meridian -90°00'

0 5 10 15 MILES
0 5 10 15 KILOMETERS

EXPLANATION

VULNERABILITY TO PESTICIDE CONTAMINATION

| | |
|---|---|
| High | Medium low |
| Medium high | Low |
| Medium | |



Figure 2. Vulnerability of Platte County ground water to pesticide contamination (from Hammerlink and Arneson, 1998).

Platte County; however the concentrations of each pesticide detected were less than 1/30 of the applicable drinking-water standard (U.S. Environmental Protection Agency, 1996; Wyoming Department of Environmental Quality, 1993) (table 1). Several of the detections were less than the minimum reporting level, at trace concentrations. A trace concentration indicates that the pesticide was detected, but at a concentration too small to quantify without estimation. Trace concentrations are qualified with an “E” (table 1).

The most commonly detected pesticide in Platte County was atrazine (detected in 6 out of 24 samples). Atrazine was also the most commonly detected pesticide in Goshen, Park, Washakie, Fremont, and Laramie Counties. Atrazine is an agricultural chemical typically used for weed control in corn and other crops (Meister, 1996).

Picloram and prometon were the second most commonly detected pesticides in Platte County (both were detected in 4 out of 24 samples). Picloram is the active ingredient in the agricultural pesticide, Tordon, and is one of the most commonly used pesticides in Wyoming. Prometon is the active ingredient in Pramitol. Prometon is a general-use pesticide and its detection is typically associated with urban land use (Barbash and others, 1999).

DATA DISTRIBUTION AND AVAILABILITY

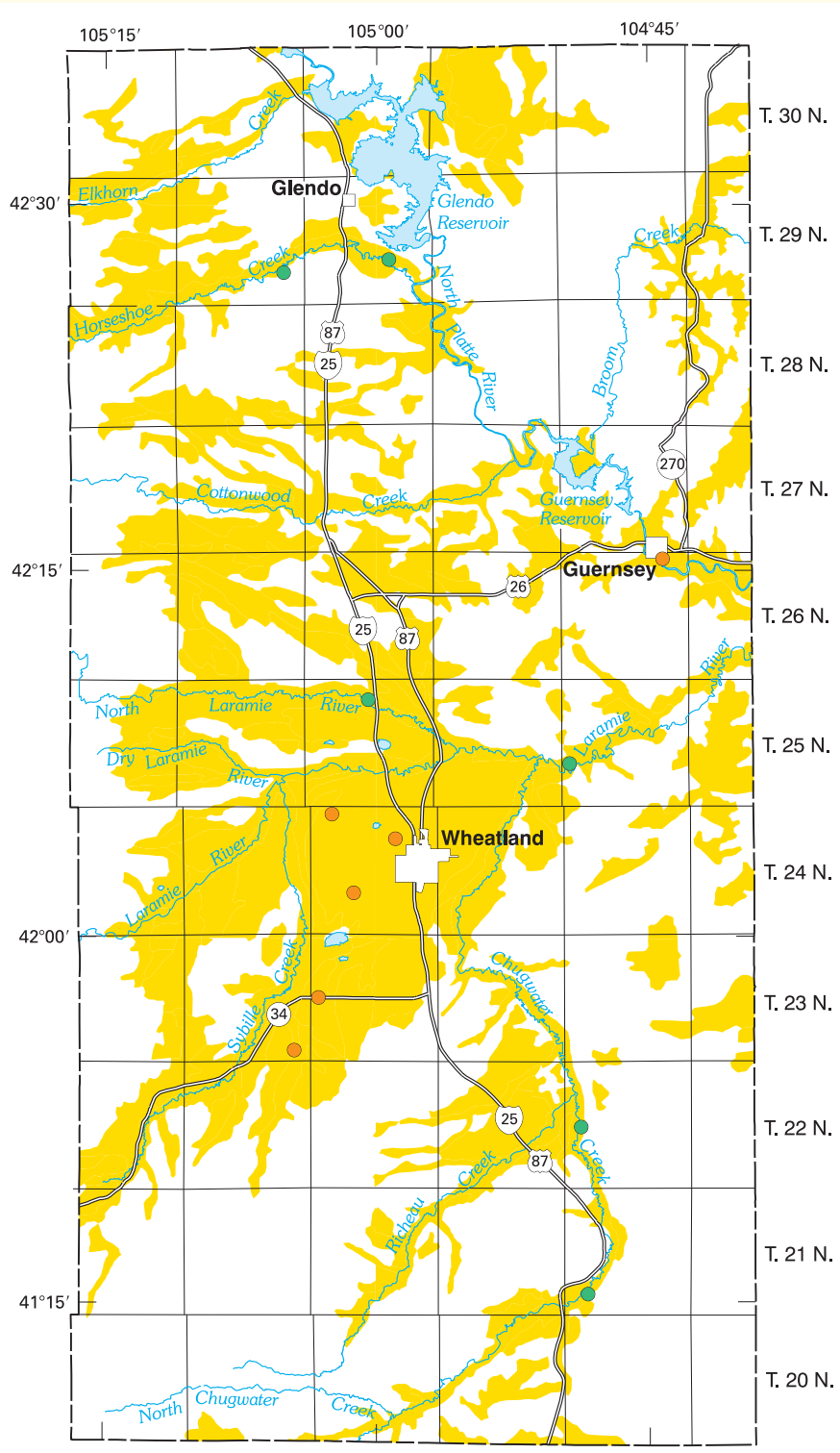
The sampling results have been provided to local groups interested in pesticides in ground water in Platte County. The information can be used by citizens and local governments to help understand current conditions. Analytical results of the Platte County sampling can be found in Mason and others (2001), and Swanson and others (2002). Analytical results and fact sheets for all counties sampled to date are available from the U.S. Geological Survey in Cheyenne, either by phone, email, or the internet (<http://wy.water.usgs.gov/projects/pesticide/>).

REFERENCES

Barbash, J.E., and Resek, E.A., 1996, Pesticides in ground water: Distribution, trends, and governing factors; in Gilliom, R.J., ed., Pesticides in the hydrologic system (v. 2): Chelsea, Mich., Ann Arbor Press, 588 p.

Barbash, J.E., Thelin, G.P., Kolpin, D.W., and Gilliom, R.J., 1999, Distribution of major herbicides in ground water of the United States: U.S. Geological Survey Water-Resources Investigations Report 98-4245, 64 p.

Hammerlink, J.D., and Arneson, C.S., editors, 1998, Wyoming ground water vulnerability



Base modified from U.S. Geological Survey Wyoming State base map, 1:500,000, 1980
 Lambert Conformal Conic projection
 Standard parallels 33° and 45°,
 central meridian -90°00'

Modified from Case, J.C., Arneson, C.S., and Hallberg, L.L.,
 Wyoming Surficial Geology, 1998, scale 1:500,000

0 5 10 15 MILES
 0 5 10 15 KILOMETERS

- EXPLANATION**
- QUATERNARY ALLUVIAL AND TERRACE DEPOSITS
 - NO PESTICIDE DETECTED IN WELL
 - PESTICIDE DETECTED IN WELL



Figure 3. Location of wells sampled in Platte County, Wyoming, and notation of pesticide detection in each well.

assessment handbook: Volume 2. Assessing ground water vulnerability to pesticides: University of Wyoming, Laramie, Spatial Data and Visualization Center Publication SDVC 98-01-2, variable pagination.

Mason, J.P., Swanson, R.B., and Roberts, S.C., 2001, Water resources data, Wyoming, water year 2000, Volume 2. Ground Water: U.S. Geological Survey Water-Data Report WY-00-2, 117 p.

Meister, R.T., 1996, Farm Chemicals Handbook: Willoughby, Ohio, Meister Publishing Co., variable pagination.

Solley, W.B., Pierce, R.R., and Perlman, H.A., 1998, Estimated use of water in the United States in 1995: U.S. Geological Survey Circular 1200, 71 p.

Swanson, R.B., Blajszczak, E.J., Roberts, S.C., Watson, K.R., and Mason, J.P., 2002, Water-resources data, Wyoming, water year 2001, Volume 2. Ground Water: U.S. Geological Survey Water-Data Report WY-01-2, 127 p.

Wyoming Department of Environmental Quality, 1993, Procedures for establishing environmental restoration standards for leaking underground storage tank remediation actions, WDEQ/WQD Rules and Regulations, Chapter XVII.

Wyoming Ground-water and Pesticides Strategy Committee, 1999, Wyoming generic state management plan for pesticides and ground water: prepared for Wyoming Department of Agriculture, Cheyenne, Wyoming, 103 p.

FOR MORE INFORMATION, CONTACT:

- Jim Bigelow**
 Wyoming Department of Agriculture
 2219 Carey Avenue
 Cheyenne, Wyoming 82002
 (307) 777-7324
- Kevin Frederick**
 Wyoming Department of Environmental Quality,
 Water Quality Division
 4th Floor, Herschler Building
 Cheyenne, Wyoming 82002
 (307) 777-7781
- Cheryl Eddy Miller**
 U.S. Geological Survey, WRD
 2617 E. Lincolnway, Suite B
 Cheyenne, Wyoming 82001
 (307) 778-2931
Email: cemiller@usgs.gov

- Prepared by Cheryl A. Eddy-Miller and Laura Gianakos
- Layout prepared by Suzanne C. Roberts

This document was prepared by the U.S. Geological Survey (USGS), the Wyoming Department of Agriculture (WDA), and the Wyoming Department of Environmental Quality, Water Quality Division (WDEQ). All agencies are members of the Ground-water and Pesticide Strategy Committee.

This project has been funded in part with a Section 319 grant from the U.S. Environmental Protection Agency to Wyoming Department of Environmental Quality's Non-Point Source Program.

The use of trade, product, industry, or firm names is for descriptive purposes only and does not imply endorsement by the U.S. Government.