

(Marysville)

U.S. GEOLOGICAL SURVEY
J.W. POWELL, DIRECTOR.

ECONOMIC GEOLOGY

CALIFORNIA
SACRAMENTO SHEET.

(Colusa)

LEGEND

SUPERFICIAL

- al Alluvium
- grv Shore and river gravels, sands, hardpan (river gravels frequently auriferous)

SEDIMENTARY

- Ng Auriferous river gravels
- Ni Ione formation (Clays, sand, and gravel, some coal seams)
- Kc Chico formation

SEDIMENTARY (metamorphic)

- Km Mariposa slates (early Cretaceous or late Jurassic age, roofing slates, quartz veins)
- Kmm Contact metamorphic rock (of age of Mariposa slates)

AURIFEROUS SLATE

- Cc Calaveras formation (slates, cherts and limestones, possibly in part early Mesozoic and older Paleozoic)

IGNEOUS

- Na Andesite (fragmental)
- grd Granodiorite (Containing locally numerous gold quartz veins)
- gbd Gabbro diorite (facies of the granodiorite)
- gb Gabbro (facies of granodiorite)
- pr Peridotite
- py Pyroxenite
- s Serpentine
- db Diabase and diabase-porphyrite

AGE OF MARIPOSA SLATES AND OLDER

- qdb Quartz-diorase

DYNAMOMETAMORPHIC

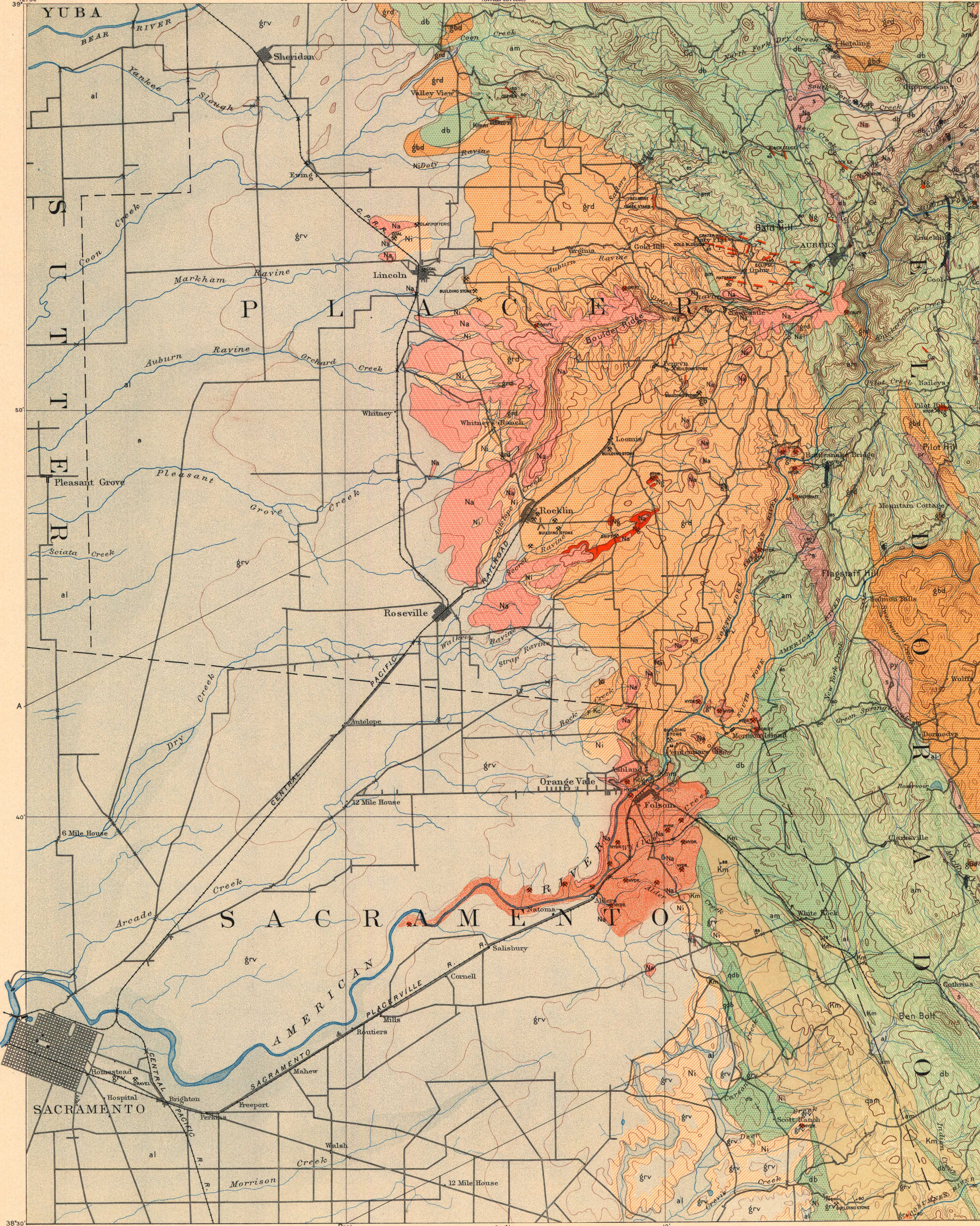
- qam Amphibolite (with schistose quartz-diorase-porphyrite)
- am Amphibolite (principally derived from diabase, contains some gold quartz veins)

1:20 Dip and strike of stratified rock
1:100 Dip and strike of crystalline rock
Dip and strike of schistosity

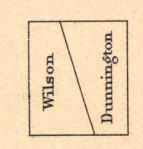
Gold quartz veins
with shaly matrix in auriferous gravels
DRIFT (gold veins in auriferous gravels)
Other mines and quartzes

Lenses in Calaveras formation (limestone)

(Jackson)



Henry Gannett, Chief Geographer.
A.H. Thompson, Geographer in charge.
Triangulation by H.M. Wilson.
Topography by H.M. Wilson and A.F. Dunnington.
Surveyed in 1887-8.



Scale 1:25,000
Contour Interval 100 feet

Edition of July 1893.

Geo. F. Becker, Geologist in charge.
Geology by W. Lindgren.
Surveyed in 1889-90.