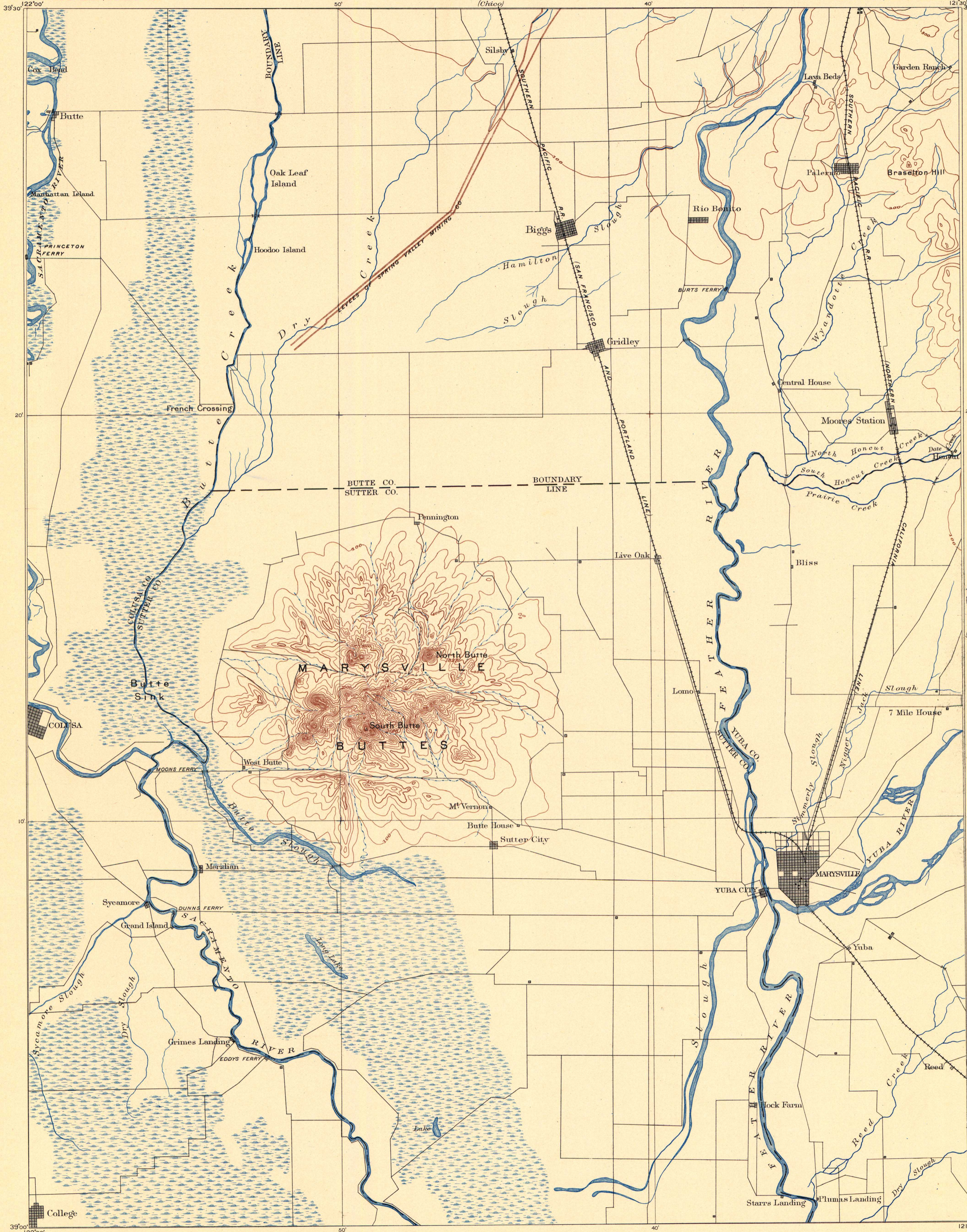


121°30' (Madwell Bay)



LEGEND

- RELIEF (printed in brown.)
 - 1851
 - Figures (showing exact heights above mean sea-level.)
 - Contours (showing height above sea, horizontal lines, and steepness of slopes of the surface.)
- DRAINAGE (printed in blue.)
 - Rivers
 - Creeks
 - Intermittent streams
 - Lakes
 - Tule land (fresh marsh)
- CULTURE (printed in black.)
 - Towns and cities
 - Houses
 - Railroads
 - Roads
 - Bridges
 - Ferries
 - Fords
 - Trails
 - County lines

Henry Gannett, Chief Geographer.
A. H. Thompson, Geographer in charge.
Triangulation by H. M. Wilson.
Topography by H. M. Wilson.
Surveyed in 1886.

Scale 1:25,000
1 2 3 4 5 Miles
Contour Interval 100 feet
Datum to mean Sea level
Edition of Jan. 1895.

121°30' (Sacramento)