

LEGEND  
(continued)

- BED-ROCK SERIES**
- Dikes of various rocks (quartz diorite porphyry, ap, and undetermined rocks)
  - Granite and granulate
  - Granite-porphry
  - Granodiorite (quartz-mica-diorite)
  - Gabbro
  - Serpentine (associated with peridotite)
  - Augite-porphry (altered augite and/or with some diorite)
  - Amphibolite (schistose and massive, derived from various basic igneous rocks)
  - Quartz-porphry (in part fragmental, sometimes schistose)
- Probable faults**
- Dip and strike of stratified rocks
  - Vertical dip and strike of stratified rocks
  - Dip and strike of schistosity
  - Vertical dip and strike of schistosity
  - Gold quartz veins

- Known productive formations**
- Auriferous gravels
  - Limestone

LEGEND

SURFICIAL ROCKS

- SUPERJACENT SERIES**
- Pag Alluvial deposits (early and late)
  - Pl Lake beds
  - Pm Moraines and glacial drift

SEDIMENTARY ROCKS

- NEOCENE**
- Ng Auriferous river gravels

JURATRIAS

- JURATRIAS?**
- Jm Milton formation (sandstone, quartzite, limestone, and conglomerate)
  - sl Siliceous argillite (lentils in quartz-porphry)

JURATRIAS

- CARBONIFEROUS**
- Crb Robinson formation (sandstone, and red shale)
  - ms Micaceous schist (detached masses in granodiorite, probably of the Robinson formation)

CARBONIFEROUS

- Cc Calaveras formation (fine-grained quartzite and limestone)
- ls Limestone lentils (in Calaveras and Milton formations)

IGNEOUS ROCKS

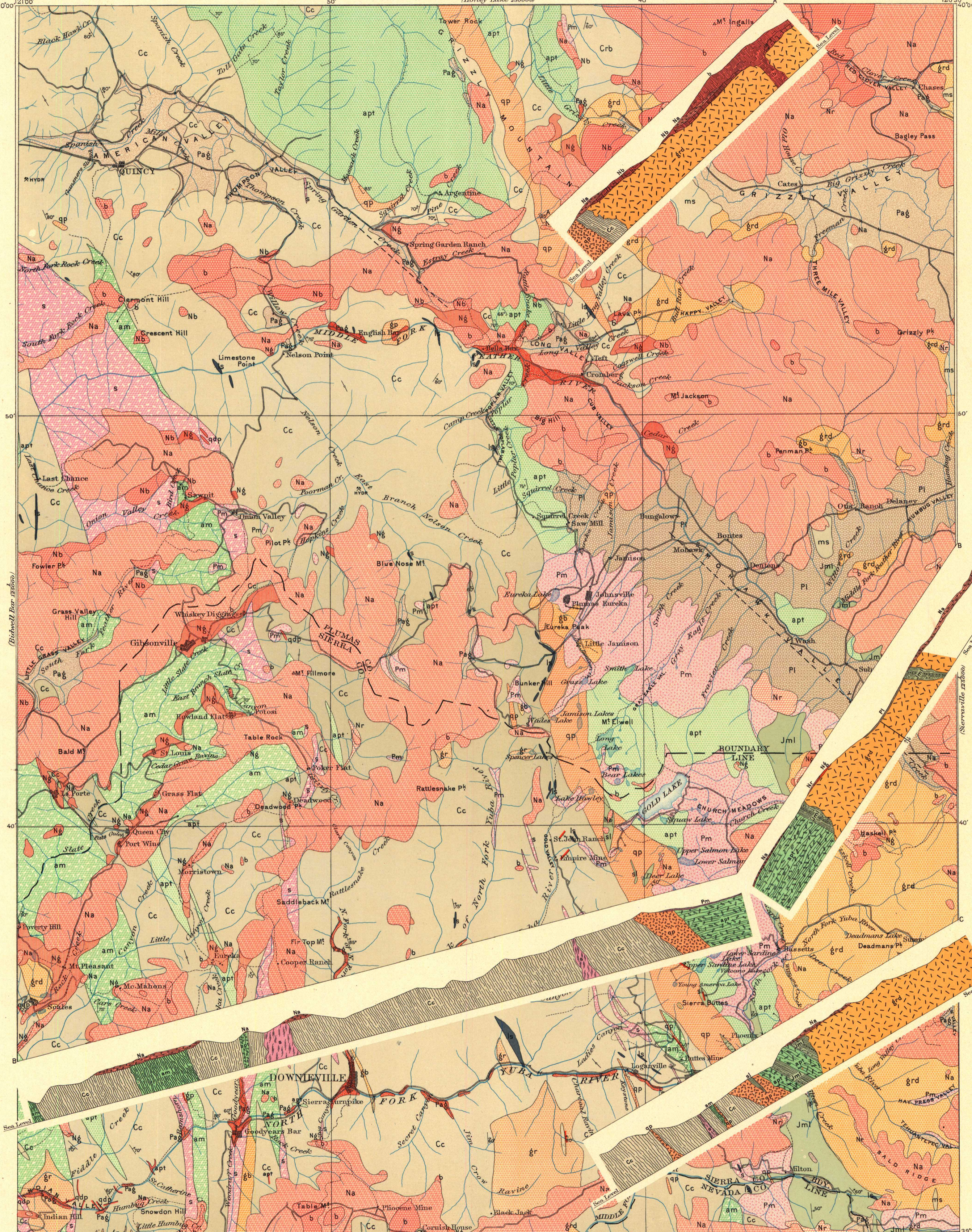
- PLEISTOCENE?**
- b Late basalt

PLEISTOCENE?

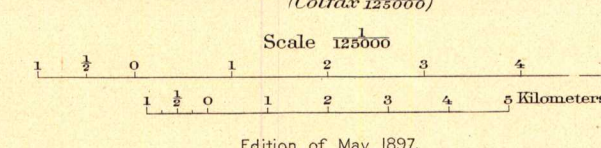
- NEOCENE**
- Na Andesite (massive and fragmental)
  - Nb Older basalt (fine grained, always massive)
  - Nr Rhyolite

NEOCENE

- LEGEND (continued on the left margin)**



Henry Gannett, Chief Geographer.  
A.H. Thompson, Geographer in charge.  
Triangulation by H.M. Wilson.  
Topography by H.M. Wilson and R.H. McKeel.  
Surveyed in 1886-8.



Geology by H.W. Turner.  
Surveyed in 1890-4.

Edition of May 1897.