

LEGEND
(continued)

- Dip and strike of stratified rocks
- Vertical dip and strike of stratified rocks
- Dip and strike of schistosity
- Vertical dip and strike of schistosity
- Gold quartz veins
- DRIFT mines in auriferous gravels
- HYDR. Hydraulic gold mines
- Gold quartz mines
- Gold quartz prospects
- Chrome and manganese prospects

Known productive formations

- Auriferous gravels
- Limestone

LEGEND

SURFICIAL ROCKS

(Areas of surficial rocks are shown by patterns of dots and circles.)

- Pag Alluvial deposits (early and late)
- Pl Lake beds
- Pm Moraines and glacial drift

SEDIMENTARY ROCKS

(Areas of sedimentary rocks are shown by patterns of parallel lines.)

- Ng Auriferous river gravels

JURATRIAS

- Jc Cedar formation (limestone, sandstone, and slate)

BED-ROCK SERIES

- Cc Calaveras formation (slate, quartzite, and limestone)

- ls Limestone lentils (in Calaveras formation)

IGNEOUS ROCKS

(Areas of igneous rocks are shown by patterns of triangles and rhombs. Metamorphism is indicated by short dashes combined with the igneous patterns.)

- lb Late basalt

- Na Andesite (massive and fragmental)
- Nb Older basalt (fine grained, always massive)

- Dikes of various rocks

- Granite, granodiorite, and quartz-diorite

- gp Micro-granite-porphphy
- gbd Gabbrodiorite
- gb Gabbro
- sp Serpentine (with talc-schist, amphibole-schist, and chlorite-schist)
- am Amphibolite (facies of and massive, derived from various basic igneous rocks including also some quartz-porphphy)

- Probable faults

- EARLIER THAN THE LATE CRETACEOUS (CHICO FORMATION)

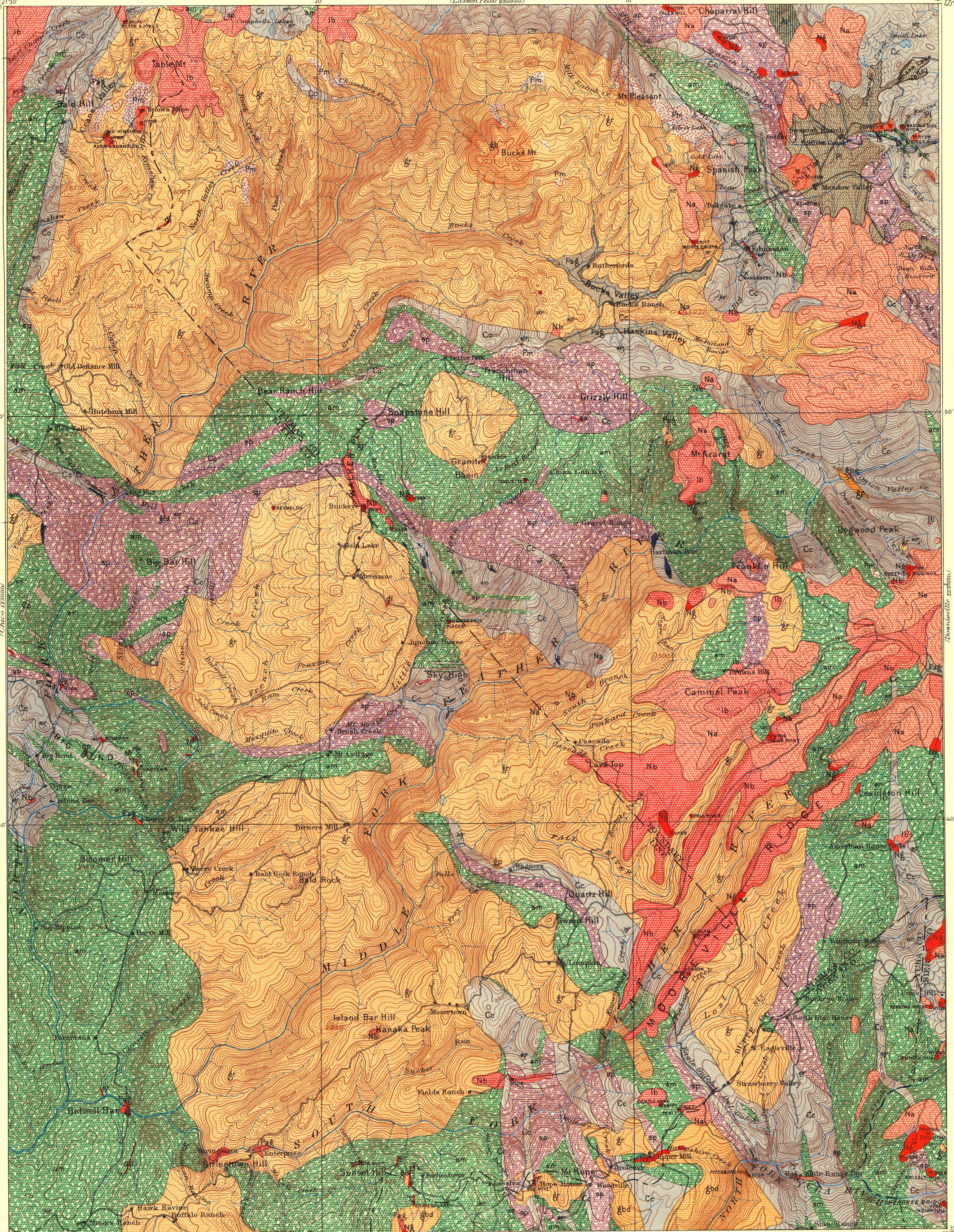
- SUPERJACENT SERIES
- NEOCENE
- PLEISTOCENE ?

- SUPERJACENT SERIES
- NEOCENE
- PLEISTOCENE

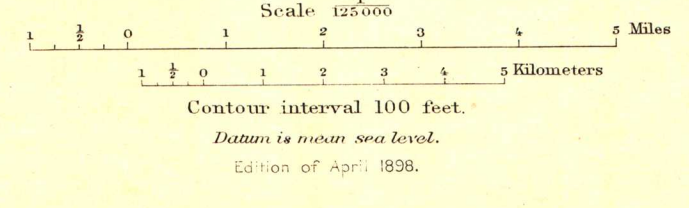
- SUPERJACENT SERIES
- NEOCENE
- PLEISTOCENE

- SUPERJACENT SERIES
- NEOCENE
- PLEISTOCENE

- SUPERJACENT SERIES
- NEOCENE
- PLEISTOCENE



Henry Gannett, Chief Geographer.
A.H. Thompson, Geographer in charge.
Triangulation by H.M. Wilson.
Topography by R.H.Mc Kee.
Surveyed in 1885-6-8.



Geology by H.W. Turner.
Surveyed in 1890-94.

Legend is continued on the left margin.