

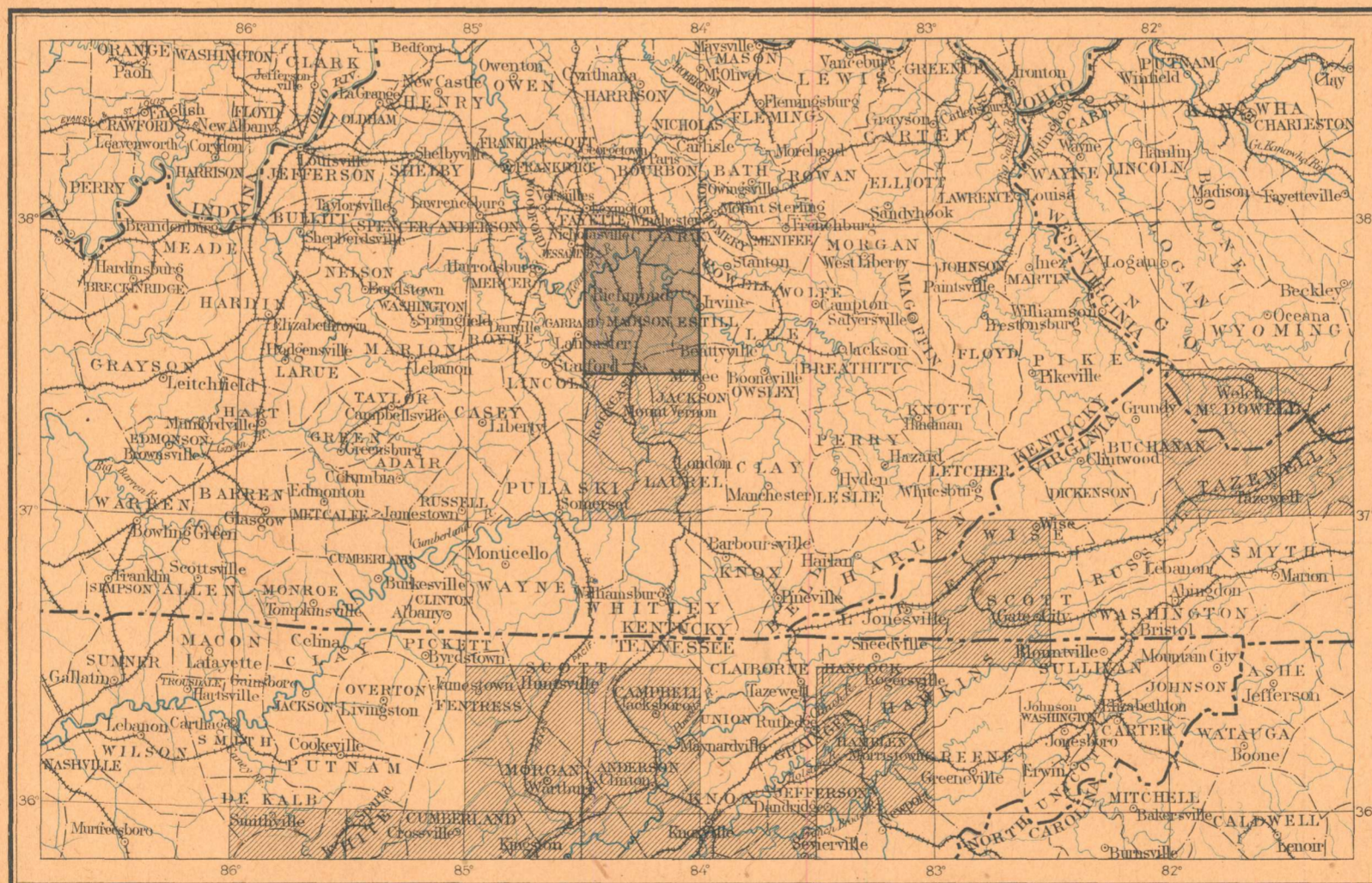
DEPARTMENT OF THE INTERIOR
 UNITED STATES GEOLOGICAL SURVEY
 CHARLES D. WALCOTT, DIRECTOR

SCHOOL OF MINES
 AND METALLURGY,
 STATE COLLEGE, PA.

GEOLOGIC ATLAS

OF THE
 UNITED STATES
 RICHMOND FOLIO
 KENTUCKY

INDEX MAP



SCALE: 40 MILES-1 INCH

AREA OF THE RICHMOND FOLIO

AREA OF OTHER PUBLISHED FOLIOS

LIST OF SHEETS

| DESCRIPTION | TOPOGRAPHY | HISTORICAL GEOLOGY | ECONOMIC GEOLOGY | STRUCTURE SECTIONS |
|-------------|------------|--------------------|------------------|--------------------|
| FOLIO 46 | | LIBRARY EDITION | | RICHMOND |

SCHOOL OF MINES
 AND METALLURGY,
 STATE COLLEGE, PA.

WASHINGTON, D. C.

ENGRAVED AND PRINTED BY THE U. S. GEOLOGICAL SURVEY

BAILEY WILLIS, EDITOR OF GEOLOGIC MAPS S. J. KÜBEL, CHIEF ENGRAVER

1898

Resend set

*Case V
 Drawer 58*

EXPLANATION.

The Geological Survey is making a geologic map of the United States, which necessitates the preparation of a topographic base map. The two are being issued together in the form of an atlas, the parts of which are called folios. Each folio consists of a topographic base map and geologic maps of a small area of country, together with explanatory and descriptive texts.

THE TOPOGRAPHIC MAP.

The features represented on the topographic map are of three distinct kinds: (1) inequalities of surface, called *relief*, as plains, plateaus, valleys, hills, and mountains; (2) distribution of water, called *drainage*, as streams, lakes, and swamps; (3) the works of man, called *culture*, as roads, railroads, boundaries, villages, and cities.

Relief.—All elevations are measured from mean sea-level. The heights of many points are accurately determined, and those which are most important are given on the map in figures. It is desirable, however, to give the elevation of all parts of the area mapped, to delineate the horizontal outline, or contour, of all slopes, and to indicate their grade or degree of steepness. This is done by lines connecting points of equal elevation above mean sea-level, the lines being drawn at regular vertical intervals. These lines are called *contours*, and the uniform vertical space between each two contours is called the *contour interval*. Contours and elevations are printed in brown.

The manner in which contours express elevation, form, and grade is shown in the following sketch and corresponding contour map:

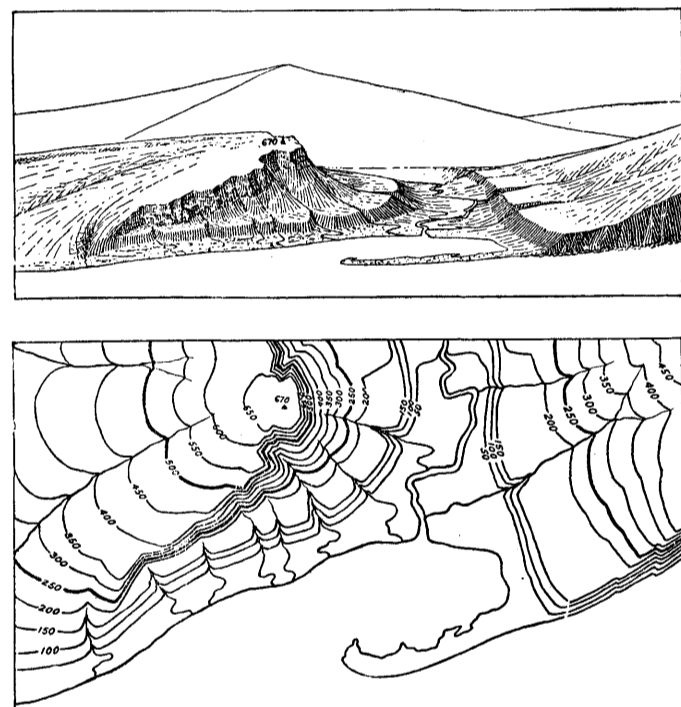


Fig. 1.—Ideal sketch and corresponding contour map.

The sketch represents a river valley between two hills. In the foreground is the sea, with a bay which is partly closed by a hooked sand-bar. On each side of the valley is a terrace. From the terrace on the right a hill rises gradually, while from that on the left the ground ascends steeply in a precipice. Contrasted with this precipice is the gentle descent of the left-hand slope. In the map each of these features is indicated, directly beneath its position in the sketch, by contours. The following explanation may make clearer the manner in which contours delineate elevation, form, and grade:

1. A contour indicates approximately a certain height above sea-level. In this illustration the contour interval is 50 feet; therefore the contours are drawn at 50, 100, 150, 200 feet, and so on, above sea-level. Along the contour at 250 feet lie all points of the surface 250 feet above sea; and similarly with any other contour. In the space between any two contours are found all elevations above the lower and below the higher contour. Thus the contour at 150 feet falls just below the edge of the terrace, while that at 200 feet lies above the terrace; therefore all points on the terrace are shown to be more than 150 but less than 200 feet above sea. The summit of the higher hill is stated to be 670 feet above sea; accordingly the contour at 650 feet surrounds it. In this illustration nearly all the contours are numbered. Where this is not possible, certain contours—say every fifth one—were accentuated and numbered; the heights of others may then be ascertained by counting up or down from a numbered contour.

2. Contours define the forms of slopes. Since contours are continuous horizontal lines conforming to the surface of the ground, they wind smoothly about smooth surfaces, recede into all reentrant angles of ravines, and project in passing about prominences. The relations of contour curves and angles to forms of the landscape can be traced in the map and sketch.

3. Contours show the approximate grade of any slope. The vertical space between two contours is the same, whether they lie along a cliff or on a gentle slope; but to rise a given height on a gentle slope one must go farther than on a steep slope, and therefore contours are far apart on gentle slopes and near together on steep ones.

For a flat or gently undulating country a small contour interval is used; for a steep or mountainous country a large interval is necessary. The smallest interval used on the atlas sheets of the Geological Survey is 5 feet. This is used for regions like the Mississippi delta and the Dismal Swamp. In mapping great mountain masses, like those in Colorado, the interval may be 250 feet. For intermediate relief contour intervals of 10, 20, 25, 50, and 100 feet are used.

Drainage.—Watercourses are indicated by blue lines. If the stream flows the year round the line is drawn unbroken, but if the channel is dry a part of the year the line is broken or dotted. Where a stream sinks and reappears at the surface, the supposed underground course is shown by a broken blue line. Lakes, marshes, and other bodies of water are also shown in blue, by appropriate conventional signs.

Culture.—The works of man, such as roads, railroads, and towns, together with boundaries of townships, counties, and States, and artificial details, are printed in black.

Scales.—The area of the United States (excluding Alaska) is about 3,025,000 square miles. On a map with the scale of 1 mile to the inch this would cover 3,025,000 square inches, and to accommodate it the paper dimensions would need to be about 240 by 180 feet. Each square mile of ground surface would be represented by a square inch of map surface, and one linear mile on the ground would be represented by a linear inch on the map. This relation between distance in nature and corresponding distance on the map is called the scale of the map. In this case it is "1 mile to an inch." The scale may be expressed also by a fraction, of which the numerator is a length on the map and the denominator the corresponding length in nature expressed in the same unit. Thus, as there are 63,360 inches in a mile, the scale "1 mile to an inch" is expressed by $\frac{1}{63,360}$. Both of these methods are used on the maps of the Geological Survey.

Three scales are used on the atlas sheets of the Geological Survey; the smallest is $\frac{1}{350,000}$, the intermediate $\frac{1}{125,000}$ and the largest $\frac{1}{62,500}$. These correspond approximately to 4 miles, 2 miles, and 1 mile on the ground to an inch on the map. On the scale $\frac{1}{62,500}$ a square inch of map surface represents and corresponds nearly to 1 square mile; on the scale $\frac{1}{125,000}$ to about 4 square miles; and on the scale $\frac{1}{350,000}$ to about 16 square miles. At the bottom of each atlas sheet the scale is expressed in three different ways, one being a graduated line representing miles and parts of miles in English inches, another indicating distance in the metric system, and a third giving the fractional scale.

Atlas sheets and quadrangles.—The map is being published in atlas sheets of convenient size, which are bounded by parallels and meridians. The corresponding four-cornered portions of territory are called *quadrangles*. Each sheet on the scale of $\frac{1}{350,000}$ contains one square degree, i. e., a degree of latitude by a degree of longitude; each sheet on the scale of $\frac{1}{125,000}$ contains one-quarter of a square degree; each sheet on the scale of $\frac{1}{62,500}$ contains one-sixteenth of a square degree. The areas of the corresponding quadrangles are about 4000, 1000, and 250 square miles, respectively.

The atlas sheets, being only parts of one map of the United States, are laid out without regard to the boundary lines of the States, counties, or townships. To each sheet, and to the quadrangle it represents, is given the name of some well-known

town or natural feature within its limits, and at the sides and corners of each sheet the names of adjacent sheets, if published, are printed.

Uses of the topographic sheet.—Within the limits of scale the topographic sheet is an accurate and characteristic delineation of the relief, drainage, and culture of the district represented. Viewing the landscape, map in hand, every characteristic feature of sufficient magnitude should be recognizable. It should guide the traveler; serve the investor or owner who desires to ascertain the position and surroundings of property to be bought or sold; save the engineer preliminary surveys in locating roads, railways, and irrigation ditches; provide educational material for schools and homes; and serve many of the purposes of a map for local reference.

THE GEOLOGIC MAP.

The maps representing areal geology show by colors and conventional signs, on the topographic base map, the distribution of rock formations on the surface of the earth, and the structure-section map shows their underground relations, as far as known, and in such detail as the scale permits.

KINDS OF ROCKS.

Rocks are of many kinds. The original crust of the earth was probably composed of *igneous rocks*, and all other rocks have been derived from them in one way or another.

Atmospheric agencies gradually break up igneous rocks, forming superficial, or *surficial*, deposits of clay, sand, and gravel. Deposits of this class have been formed on land surfaces since the earliest geologic time. Through the transporting agencies of streams the surficial materials of all ages and origins are carried to the sea, where, along with material derived from the land by the action of the waves on the coast, they form *sedimentary rocks*. These are usually hardened into conglomerate, sandstone, shale, and limestone, but they may remain unconsolidated and still be called "rocks" by the geologist, though popularly known as gravel, sand, and clay.

From time to time in geologic history igneous and sedimentary rocks have been deeply buried, consolidated, and raised again above the surface of the water. In these processes, through the agencies of pressure, movement, and chemical action, they are often greatly altered, and in this condition they are called *metamorphic rocks*.

Igneous rocks.—These are rocks which have cooled and consolidated from a liquid state. As has been explained, sedimentary rocks were deposited on the original igneous rocks. Through the igneous and sedimentary rocks of all ages molten material has from time to time been forced upward to or near the surface, and there consolidated. When the channels or vents into which this molten material is forced do not reach the surface, it either consolidates in cracks or fissures crossing the bedding planes, thus forming dikes, or else spreads out between the strata in large bodies, called sills or laccoliths. Such rocks are called *intrusive*. Within their rock enclosures they cool slowly, and hence are generally of crystalline texture. When the channels reach the surface the lavas often flow out and build up volcanoes. These lavas cool rapidly in the air, acquiring a glassy or, more often, a partially crystalline condition. They are usually more or less porous. The igneous rocks thus formed upon the surface are called *extrusive*. Explosive action often accompanies volcanic eruptions, causing ejections of dust or ash and larger fragments. These materials when consolidated constitute breccias, agglomerates, and tuffs. The ash when carried into lakes or seas may become stratified, so as to have the structure of sedimentary rocks.

The age of an igneous rock is often difficult or impossible to determine. When it cuts across a sedimentary rock, it is younger than that rock, and when a sedimentary rock is deposited over it, the igneous rock is the older.

Under the influence of dynamic and chemical forces an igneous rock may be metamorphosed. The alteration may involve only a rearrangement of its minute particles or it may be accompanied by a change in chemical and mineralogic composition. Further, the structure of the rock may be

changed by the development of planes of division, so that it splits in one direction more easily than in others. Thus a granite may pass into a gneiss, and from that into a mica-schist.

Sedimentary rocks.—These comprise all rocks which have been deposited under water, whether in sea, lake, or stream. They form a very large part of the dry land.

When the materials of which sedimentary rocks are composed are carried as solid particles by water and deposited as gravel, sand, or mud, the deposit is called a mechanical sediment. These may become hardened into conglomerate, sandstone, or shale. When the material is carried in solution by the water and is deposited without the aid of life, it is called a chemical sediment; if deposited with the aid of life, it is called an organic sediment. The more important rocks formed from chemical and organic deposits are limestone, chert, gypsum, salt, iron ore, peat, lignite, and coal. Any one of the above sedimentary deposits may be separately formed, or the different materials may be intermingled in many ways, producing a great variety of rocks.

Sedimentary rocks are usually made up of layers or beds which can be easily separated. These layers are called *strata*. Rocks deposited in successive layers are said to be stratified.

The surface of the earth is not fixed, as it seems to be; it very slowly rises or sinks over wide expanses, and as it rises or subsides the shore-lines of the ocean are changed: areas of deposition may rise above the water and become land areas, and land areas may sink below the water and become areas of deposition. If North America were gradually to sink a thousand feet the sea would flow over the Atlantic coast and the Mississippi and Ohio valleys from the Gulf of Mexico to the Great Lakes; the Appalachian Mountains would become an archipelago, and the ocean's shore would traverse Wisconsin, Iowa, and Kansas, and extend thence to Texas. More extensive changes than this have repeatedly occurred in the past.

The character of the original sediments may be changed by chemical and dynamic action so as to produce metamorphic rocks. In the metamorphism of a sedimentary rock, just as in the metamorphism of an igneous rock, the substances of which it is composed may enter into new combinations, or new substances may be added. When these processes are complete the sedimentary rock becomes crystalline. Such changes transform sandstone to quartzite, limestone to marble, and modify other rocks according to their composition. A system of parallel division planes is often produced, which may cross the original beds or strata at any angle. Rocks divided by such planes are called *slates* or *schists*.

Rocks of any period of the earth's history may be more or less altered, but the younger formations have generally escaped marked metamorphism, and the oldest sediments known, though generally the most altered, in some localities remain essentially unchanged.

Surficial rocks.—These embrace the soils, clays, sands, gravels, and boulders that cover the surface, whether derived from the breaking up or disintegration of the underlying rocks by atmospheric agencies or from glacial action. Surficial rocks that are due to disintegration are produced chiefly by the action of air, water, frost, animals, and plants. They consist mainly of the least soluble parts of the rocks, which remain after the more soluble parts have been leached out, and hence are known as residual products. Soils and subsoils are the most important. Residual accumulations are often washed or blown into valleys or other depressions, where they lodge and form deposits that grade into the sedimentary class. Surficial rocks that are due to glacial action are formed of the products of disintegration, together with boulders and fragments of rock rubbed from the surface and ground together. These are spread irregularly over the territory occupied by the ice, and form a mixture of clay, pebbles, and boulders which is known as till. It may occur as a sheet or be bunched into hills and ridges, forming moraines, drumlins, and other special forms. Much of this mixed material was washed away from the ice, assorted by water, and redeposited as beds or trains of sand and clay, thus

forming another gradation into sedimentary deposits. Some of this glacial wash was deposited in tunnels and channels in the ice, and forms characteristic ridges and mounds of sand and gravel, known as osars, or eskers, and kames. The material deposited by the ice is called glacial drift; that washed from the ice onto the adjacent land is called modified drift. It is usual also to class as surficial rocks the deposits of the sea and of lakes and rivers that were made at the same time as the ice deposit.

AGES OF ROCKS.

Rocks are further distinguished according to their relative ages, for they were not formed all at one time, but from age to age in the earth's history. Classification by age is independent of origin; igneous, sedimentary, and surficial rocks may be of the same age.

When the predominant material of a rock mass is essentially the same, and it is bounded by rocks of different materials, it is convenient to call the mass throughout its extent a *formation*, and such a formation is the unit of geologic mapping.

Several formations considered together are designated a *system*. The time taken for the deposition of a formation is called an *epoch*, and the time taken for that of a system, or some larger fraction of a system, a *period*. The rocks are mapped by formations, and the formations are classified into systems. The rocks composing a system and the time taken for its deposition are given the same name, as, for instance, Cambrian system, Cambrian period.

As sedimentary deposits or strata accumulate the younger rest on those that are older, and the relative ages of the deposits may be discovered by observing their relative positions. This relationship holds except in regions of intense disturbance; sometimes in such regions the disturbance of the beds has been so great that their position is reversed, and it is often difficult to determine the relative ages of the beds from their positions; then *fossils*, or the remains of plants and animals, are guides to show which of two or more formations is the oldest.

Strata often contain the remains of plants and animals which lived in the sea or were washed from the land into lakes or seas or were buried in surficial deposits on the land. Rocks that contain the remains of life are called fossiliferous. By studying these remains, or fossils, it has been found that the species of each period of the earth's history have to a great extent differed from those of other periods. Only the simpler kinds of marine life existed when the oldest fossiliferous rocks were deposited. From time to time more complex kinds developed, and as the simpler ones lived on in modified forms life became more varied. But during each period there lived peculiar forms, which did not exist in earlier times and have not existed since; these are characteristic types, and they define the age of any bed of rock in which they are found. Other types passed on from period to period, and thus linked the systems together, forming a chain of life from the time of the oldest fossiliferous rocks to the present.

When two formations are remote one from the other and it is impossible to observe their relative positions, the characteristic fossil types found in them may determine which was deposited first.

Fossil remains found in the rocks of different areas, provinces, and continents, afford the most important means for combining local histories into a general earth history.

Colors and patterns.—To show the relative ages of strata, the history of the sedimentary rocks is divided into periods. The names of the periods in proper order (from new to old), with the color or colors and symbol assigned to each, are given in the table in the next column. The names of certain subdivisions of the periods, frequently used in geologic writings, are bracketed against the appropriate period name.

To distinguish the sedimentary formations of any one period from those of another the patterns for the formations of each period are printed in the appropriate period-color, with the exception of the first (Pleistocene) and the last (Archean). The formations of any one period, excepting

the Pleistocene and the Archean, are distinguished from one another by different patterns, made of parallel straight lines. Two tints of the period-color are used: a pale tint (the underprint) is printed evenly over the whole surface representing the period; a dark tint (the overprint) brings out the different patterns representing formations.

| PERIOD. | SYMBOL. | COLOR. |
|---|---------|----------------|
| Pleistocene | P | Any colors. |
| Neocene { Pliocene } | N | Bufs. |
| { Miocene } | | |
| Eocene (including Oligocene) | E | Olive-browns. |
| Cretaceous | K | Olive-greens. |
| Juratrias { Jurassic } | J | Blue-greens. |
| { Triassic } | | |
| Carboniferous (including Permian) | C | Blues. |
| Devonian | D | Blue-purples. |
| Silurian (including Ordovician) | S | Red-purples. |
| Cambrian | C | Pinks. |
| Algonkian | A | Orange-browns. |
| Archean | R | Any colors. |

Each formation is furthermore given a letter-symbol of the period. In the case of a sedimentary formation of uncertain age the pattern is printed on white ground in the color of the period to which the formation is supposed to belong, the letter-symbol of the period being omitted.

The number and extent of surficial formations of the Pleistocene render them so important that, to distinguish them from those of other periods and from the igneous rocks, patterns of dots and circles, printed in any colors, are used.

The origin of the Archean rocks is not fully settled. Many of them are certainly igneous. Whether sedimentary rocks are also included is not determined. The Archean rocks, and all metamorphic rocks of unknown origin, of whatever age, are represented on the maps by patterns consisting of short dashes irregularly placed. These are printed in any color, and may be darker or lighter than the background. If the rock is a schist the dashes or hachures may be arranged in wavy parallel lines. If the rock is known to be of sedimentary origin the hachure patterns may be combined with the parallel-line patterns of sedimentary formations. If the metamorphic rock is recognized as having been originally igneous, the hachures may be combined with the igneous pattern.

Known igneous formations are represented by patterns of triangles or rhombs printed in any brilliant color. If the formation is of known age the letter-symbol of the formation is preceded by the capital letter-symbol of the proper period. If the age of the formation is unknown the letter-symbol consists of small letters which suggest the name of the rocks.

THE VARIOUS GEOLOGIC SHEETS.

Historical geology sheet.—This sheet shows the areas occupied by the various formations. On the margin is a *legend*, which is the key to the map. To ascertain the meaning of any particular colored pattern and its letter-symbol on the map the reader should look for that color, pattern, and symbol in the legend, where he will find the name and description of the formation. If it is desired to find any given formation, its name should be sought in the legend and its color and pattern noted, when the areas on the map corresponding in color and pattern may be traced out.

The legend is also a partial statement of the geologic history. In it the symbols and names are arranged, in columnar form, according to the origin of the formations—surficial, sedimentary, and igneous—and within each group they are placed in the order of age, so far as known, the youngest at the top.

Economic geology sheet.—This sheet represents the distribution of useful minerals, the occurrence of artesian water, or other facts of economic interest, showing their relations to the features of topography and to the geologic formations. All the formations which appear on the historical geology sheet are shown on this sheet by fainter color-patterns. The areal geology, thus printed, affords a subdued background upon which the areas of productive formations may be emphasized by strong colors. A symbol for mines is introduced at each occurrence, accompanied by the name of the principal mineral mined or of the stone quarried.

Structure-section sheet.—This sheet exhibits the relations of the formations beneath the surface.

In cliffs, canyons, shafts, and other natural and artificial cuttings, the relations of different beds to one another may be seen. Any cutting which exhibits those relations is called a *section*, and the same name is applied to a diagram representing the relations. The arrangement of rocks in the earth is the earth's *structure*, and a section exhibiting this arrangement is called a *structure section*.

The geologist is not limited, however, to the natural and artificial cuttings for his information concerning the earth's structure. Knowing the manner of the formation of rocks, and having traced out the relations among beds on the surface, he can infer their relative positions after they pass beneath the surface, draw sections which represent the structure of the earth to a considerable depth, and construct a diagram exhibiting what would be seen in the side of a cutting many miles long and several thousand feet deep. This is illustrated in the following figure:

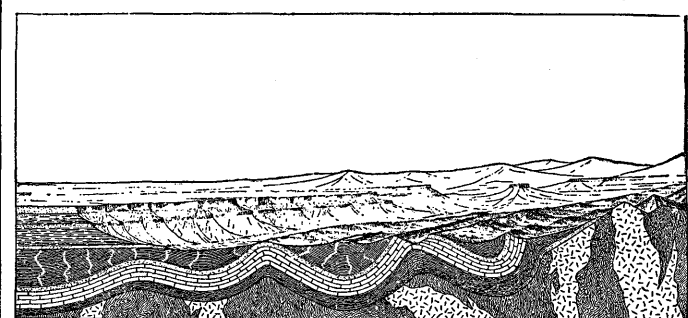


Fig. 2.—Sketch showing a vertical section in the front of the picture, with a landscape beyond.

The figure represents a landscape which is cut off sharply in the foreground by a vertical plane that cuts a section so as to show the underground relations of the rocks.

The kinds of rock are indicated in the section by appropriate symbols of lines, dots, and dashes. These symbols admit of much variation, but the following are generally used in sections to represent the commoner kinds of rock:

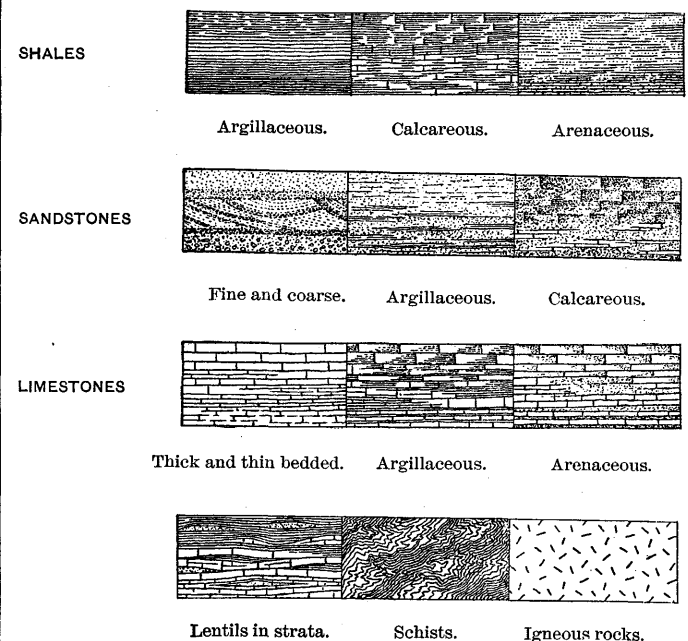


Fig. 3.—Symbols used to represent different kinds of rock.

The plateau in fig. 2 presents toward the lower land an escarpment, or front, which is made up of sandstones, forming the cliffs, and shales, constituting the slopes, as shown at the extreme left of the section.

The broad belt of lower land is traversed by several ridges, which are seen in the section to correspond to beds of sandstone that rise to the surface. The upturned edges of these beds form the ridges, and the intermediate valleys follow the outcrops of limestone and calcareous shales.

Where the edges of the strata appear at the surface their thickness can be measured and the angles at which they dip below the surface can be observed. Thus their positions underground can be inferred.

When strata which are thus inclined are traced underground in mining, or by inference, it is frequently observed that they form troughs or arches, such as the section shows. But these sandstones, shales, and limestones were deposited beneath the sea in nearly flat sheets. That they are now bent and folded is regarded as proof that forces exist which have from time to time caused the earth's surface to wrinkle along certain zones.

On the right of the sketch the section is composed of schists which are traversed by masses of igneous rock. The schists are much contorted and their arrangement underground can not be inferred. Hence that portion of the section delineates what is probably true but is not known by observation or well-founded inference.

In fig. 2 there are three sets of formations, distinguished by their underground relations. The first of these, seen at the left of the section, is the set of sandstones and shales, which lie in a horizontal position. These sedimentary strata are now high above the sea, forming a plateau, and their change of elevation shows that a portion of the earth's mass has swelled upward from a lower to a higher level. The strata of this set are parallel, a relation which is called *conformable*.

The second set of formations consists of strata which form arches and troughs. These strata were once continuous, but the crests of the arches have been removed by degradation. The beds, like those of the first set, are conformable.

The horizontal strata of the plateau rest upon the upturned, eroded edges of the beds of the second set at the left of the section. The overlying deposits are, from their positions, evidently younger than the underlying formations, and the bending and degradation of the older strata must have occurred between the deposition of the older beds and the accumulation of the younger. When younger strata thus rest upon an eroded surface of older strata the relation between the two is an *unconformable* one, and their surface of contact is an *unconformity*.

The third set of formations consists of crystalline schists and igneous rocks. At some period of their history the schists were plicated by pressure and traversed by eruptions of molten rock. But this pressure and intrusion of igneous rocks have not affected the overlying strata of the second set. Thus it is evident that an interval of considerable duration elapsed between the formation of the schists and the beginning of deposition of the strata of the second set. During this interval the schists suffered metamorphism; they were the scene of eruptive activity; and they were deeply eroded. The contact between the second and third sets, marking a time interval between two periods of rock formation, is another unconformity.

The section and landscape in fig. 2 are ideal, but they illustrate relations which actually occur. The sections in the structure-section sheet are related to the maps as the section in the figure is related to the landscape. The profiles of the surface in the section correspond to the actual slopes of the ground along the section line, and the depth of any mineral-producing or water-bearing stratum which appears in the section may be measured from the surface by using the scale of the map.

Columnar-section sheet.—This sheet contains a concise description of the rock formations which occur in the quadrangle. The diagrams and verbal statements form a summary of the facts relating to the character of the rocks, to the thicknesses of the formations, and to the order of accumulation of successive deposits.

The rocks are described under the corresponding heading, and their characters are indicated in the columnar diagrams by appropriate symbols. The thicknesses of formations are given under the heading "Thickness in feet," in figures which state the least and greatest measurements. The average thickness of each formation is shown in the column, which is drawn to a scale—usually 1000 feet to 1 inch. The order of accumulation of the sediments is shown in the columnar arrangement: the oldest formation is placed at the bottom of the column, the youngest at the top, and igneous rocks or other formations, when present, are indicated in their proper relations.

The formations are combined into systems which correspond with the periods of geologic history. Thus the ages of the rocks are shown, and also the total thickness of each system.

The intervals of time which correspond to events of uplift and degradation and constitute interruptions of deposition of sediments may be indicated graphically or by the word "unconformity," printed in the columnar section.

Each formation shown in the columnar section is accompanied by its name, a description of its character, and its letter-symbol as used in the maps and their legends.

CHARLES D. WALCOTT,
Director.

Revised June, 1897.