

LEGEND

LEGEND
(continued)

- Known productive formations
- Gold and silver bearing veins (showing strike and dip)
- Gold bearing gravels
- Areas of brecciated rock impregnated with pyrite shalyly auriferous
- Coal (Mesaverde formation, containing productive coal beds)

NAMES OF MINES
(Indicated on the map by numbers.)

- 1 Century.
- 2 Tippecanoe.
- 3 Cumberland.
- 4 Small Hopes.
- 5 Bessie G.
- 6 Moonlight.
- 7 Mountain Lily.
- 8 Tip Top.
- 9 Little Kate.
- 10 North Star.
- 11 Western Belle.
- 12 Jenny Lind.
- 13 Eagle Pass.
- 14 Eureka-Bulldozer.
- 15 Hibernia.
- 16 Baker Contact.
- 17 Shoofly.
- 18 Comstock.
- 19 Gold Bug.
- 20 Mammoth.
- 21 Georgia Girl.

SURFICIAL ROCKS
(Areas of surficial rocks are shown by patterns of dots and circles.)

- Pls Landslides (a confused mingling of large and small blocks of various formations from the mountains above)
- Ptg Terrace gravels (gravel and boulder beds of alluvial origin)

SEDIMENTARY ROCKS
(Areas of sedimentary rocks are shown by patterns of parallel lines.)

- Kle Lewis shale (dark shale somewhat arenaceous fossiliferous)
- Kmv Mesaverde formation (alternating sandstones and shales. Contains workable coal seams and is fossiliferous)
- Kmc Mancos shale (dark shale with local carbonaceous and sandy layers fossiliferous. Includes the Benton and Stibersville formations and part of the Pierre)
- Kd Dakota sandstone (interbedded quartzite sandstones with carbonaceous shale locally containing coal)

IGNEOUS ROCKS
(Areas of igneous rocks are shown by patterns of triangles and rhombs.)

- Jme Mc Elmo formation (alternating sandstones and shales)
- Jlp La Plata sandstone (white massive sandstone with thin blue limestone and calcareous shale)
- Jd Dolores formation (calcareous sandstone, grit, conglomerate, and some shales with prevailing red color, fossiliferous)

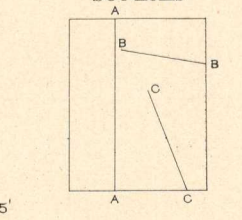
IGNEOUS ROCKS
(Areas of igneous rocks are shown by patterns of triangles and rhombs.)

- Basic dikes and sheets (trapezoidal, angular fragments and tilted rare rocks)
- di Diorite (in stocks and dikes. Contains angular boulders, blende, and brimstone)
- mz Monzonite (in a stock and associated dikes and sheets. Contains angular boulders, blende, and brimstone)
- sy Augite syenite (in two stocks)
- sp Syenite porphyry (in sheets and dikes)
- dmp Diorite porphyry and monzonite porphyry (in stocks, sheets, and dikes)

Faults

Landslide boundaries

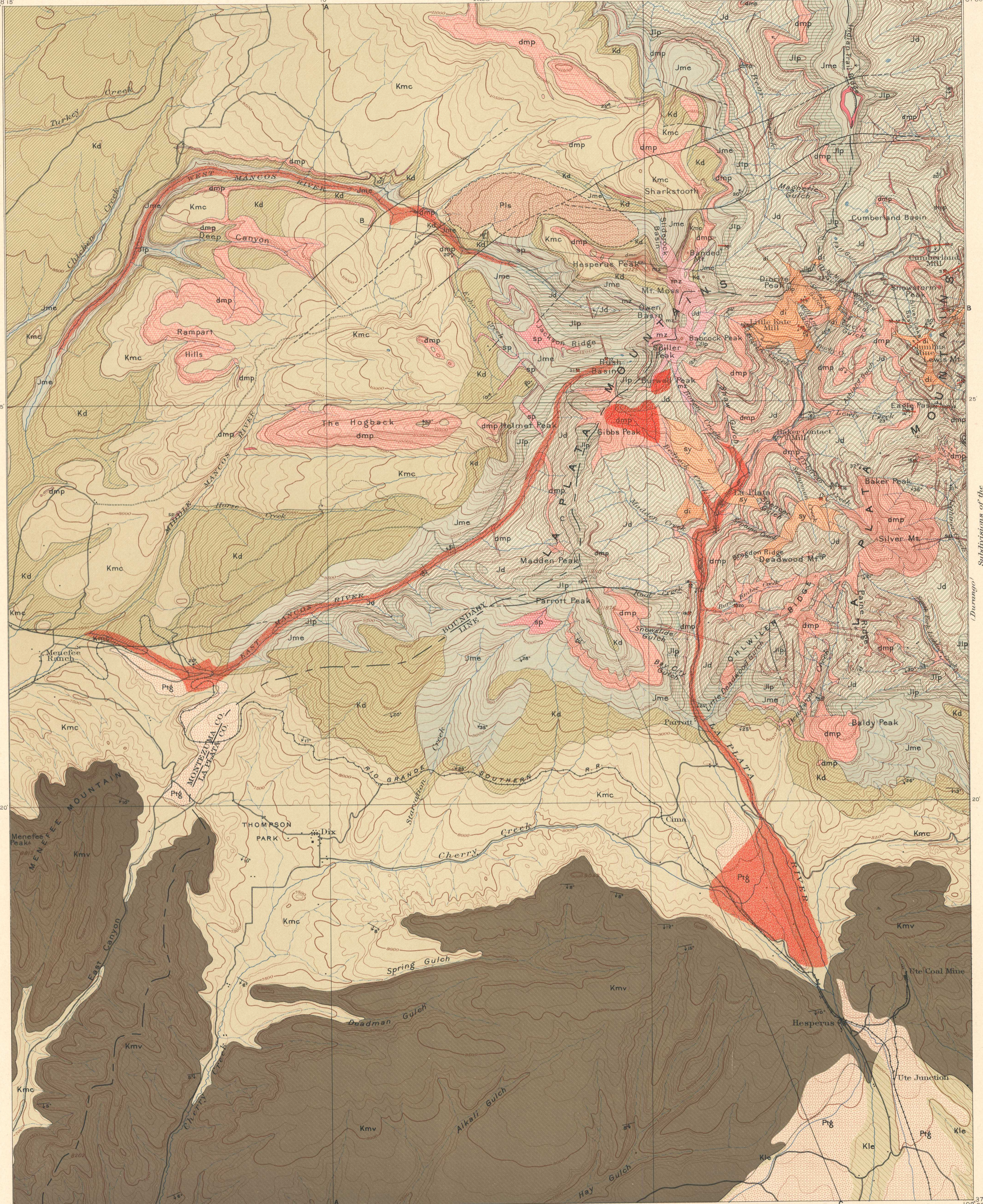
Sections



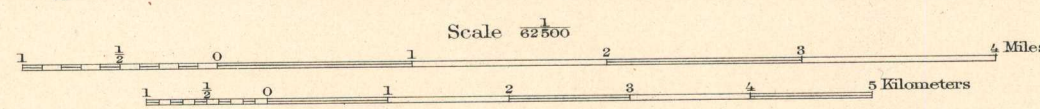
Strike and dip of stratified rocks

Mines and prospects of silver and gold

Legend is continued on the left margin.



Henry Gannett, Chief Topographer.
E.M. Douglas, Topographer in charge.
Triangulation and Topography by Frank Tweedy.
Surveyed in 1895.



Contour interval 100 feet.
Datum is mean sea level.

Edition of Oct. 1899.

Geology by Whitman Cross.
Assisted by A.C. Spencer and H.S. Gane.
Economic Geology by Chester W. Furlington.
Surveyed in 1896-97.