

U.S. GEOLOGICAL SURVEY
CHARLES D. WALCOTT, DIRECTOR

ECONOMIC GEOLOGY SHEET

GEORGIA-ALABAMA
ROME QUADRANGLE

LEGEND

SEDIMENTARY ROCKS

(Areas of Sedimentary rocks are shown by patterns of parallel lines)

(See margin)

(See margin)

(See margin)

(See margin)

(See margin)

(See margin)

(See margin)

(See margin)

(See margin)

(See margin)

(See margin)

(See margin)

(See margin)

(See margin)

(See margin)

(See margin)

(See margin)

(See margin)

(See margin)

(See margin)

(See margin)

(See margin)

(See margin)

(See margin)

(See margin)

(See margin)

(See margin)

(See margin)

(See margin)

(See margin)

(See margin)

(See margin)

(See margin)

(See margin)

(See margin)

(See margin)

(See margin)

(See margin)

(See margin)

(See margin)

(See margin)

(See margin)

(See margin)

(See margin)

(See margin)

(See margin)

(See margin)

(See margin)

(See margin)

(See margin)

(See margin)

(See margin)

(See margin)

(See margin)

(See margin)

(See margin)

(See margin)

(See margin)

(See margin)

(See margin)

(See margin)

(See margin)

(See margin)

(See margin)

(See margin)

(See margin)

(See margin)

(See margin)

(See margin)

(See margin)

(See margin)

(See margin)

(See margin)

(See margin)

(See margin)

(See margin)

(See margin)

(See margin)

(See margin)

(See margin)

(See margin)

(See margin)

(See margin)

(See margin)

(See margin)

(See margin)

(See margin)

(See margin)

(See margin)

(See margin)

(See margin)

(See margin)

(See margin)

(See margin)

(See margin)

(See margin)

(See margin)

(See margin)

(See margin)

(See margin)

NEOGENE?

CARBONIFEROUS

DEVONIAN

SILURIAN

CAMBRIAN

LEGEND (continued)

* Mines and quarries

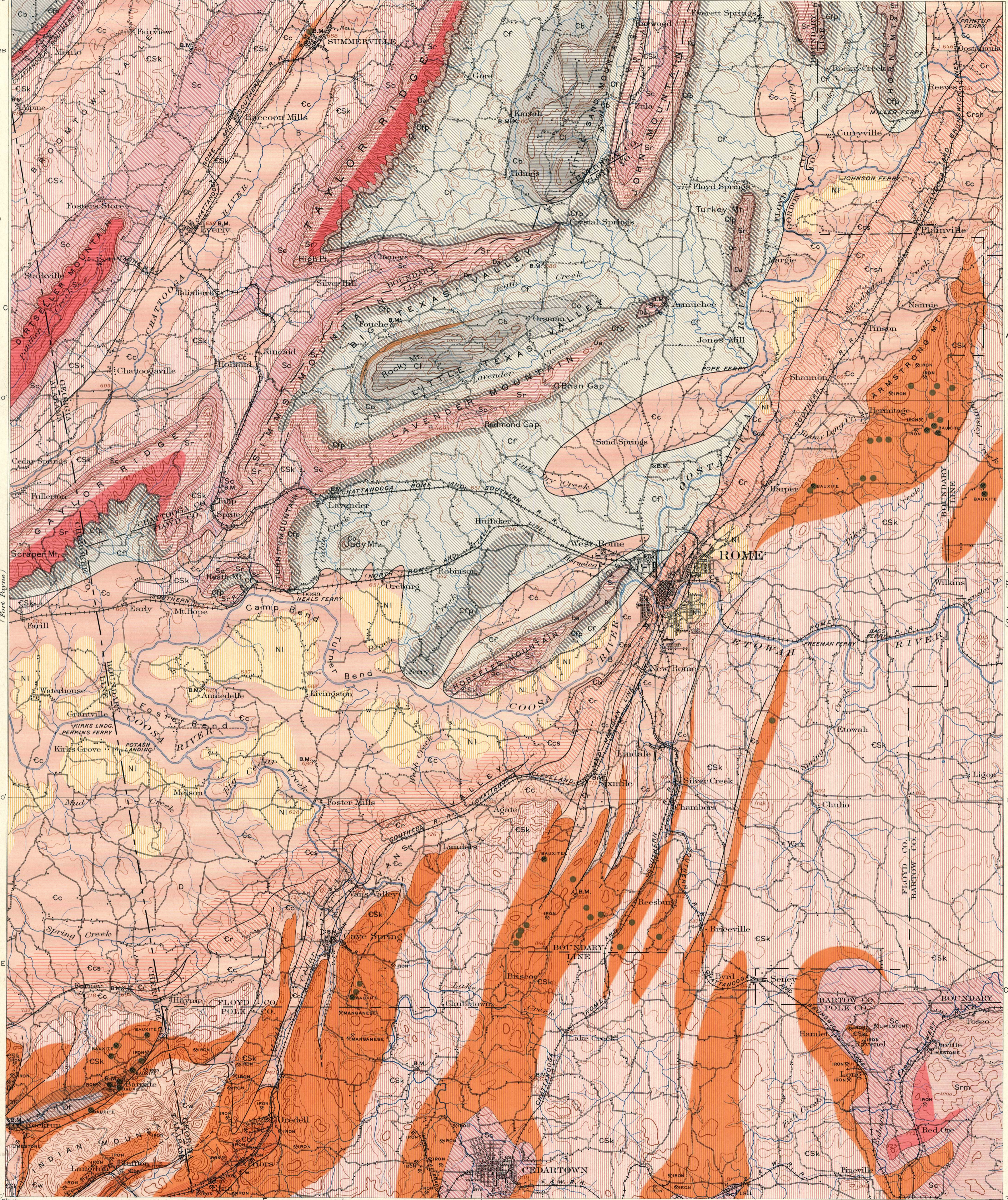
Known productive areas

Sr-Srm

Iron (Rockwood and Rockmart formations contain beds of hematite and limonite iron ore)

Iron (areas containing deposits of limonite iron ore)

Bauxite (deposits of aluminum ore)



H. M. Wilson, Geographer in charge.
Triangulation by U.S. Coast and Geodetic Survey.
Topography by M. Hackett and A. M. Walker.
Surveyed in 1895-96 and 1898.

Scale 1:25,000
1 2 3 4 5 Miles
1 2 3 4 5 Kilometers

Contour interval 100 feet.

Datum is 1/4 foot below mean sea level.

(The elevations on this map were derived from railroad levels at Rome. Subsequent accurate leveling by the U.S.G.S. shows those to have been 1/4 foot too high.)

Edition of Dec. 1901.

Geology by C. Willard Hayes.
Assisted by Marius R. Campbell,
Alfred H. Brooks, and C. C. Babb.
Surveyed in 1890, 93, and 96.

Legend is continued on the left margin.

