

STRUCTURE SECTIONS

LEGEND

LEGEND

IGNEOUS ROCKS
(continued)

SHEET SECTION SYMBOL SYMBOL

Serpentine and associated basic rocks
(massive masses and dikes of serpentine, peridotite, gabbro, norite, and gabbro)

Cuesta diabase
(intrusive masses and sheets)

Andesite-granophyre
(intrusive masses and sheets)

Dacite-granophyre
(volcanic necks, intrusive masses, and dikes)

Osos basalt
(surface flows)

Diabase and other basic rocks
(intrusive diabase, olivine-diabase, basalt, peridotite, and peridotite)

Granite
(plutonic basement rocks)

Pre-Chico

CRETACEOUS

JURATRIAS?

PRE-JURATRIAS

Faults are not clearly defined in the field and therefore are not shown on the map.

SURFICIAL ROCKS

SHEET SECTION SYMBOL SYMBOL

Recent

Alluvium and stream gravel

Terrace deposits and dune sand

Pleistocene

SEDIMENTARY ROCKS

SHEET SECTION SYMBOL SYMBOL

Pliocene

Paso Robles formation
(conglomerate and sands, and marly clay of fluvial water origin)

UNCONFORMITY

Miocene (San Pablo)

Pismo formation
(sandstone and clay shales)

Santa Margarita formation
(soft sandstone and conglomerate, with beds of diatomaceous earth and volcanic ash)

UNCONFORMITY

Monterey shale
(gray shale, limestone, and siliceous shales)

Vaquero sandstone
(sandstone and conglomerate)

UNCONFORMITY

Chico

Atascadero formation
(sandstone with some conglomerate and shale)

UNCONFORMITY

Knocoville

Toro formation
(dark shale and thin-bedded sandstone)

UNCONFORMITY

Jurassic? (Franciscan)

San Luis formation
(sandstone, conglomerate, shale, and contact metamorphic amphibolite schist)

Jasper lentils in San Luis formation
(variegated, jasper and chert composed largely of radiolarian remains)

UNCONFORMITY

IGNEOUS ROCKS

SHEET SECTION SYMBOL SYMBOL

Augite-teschenite
(intrusive sheets and dikes)

Olivine-diabase
(dikes and sheets)

Quartz-basalt and rhyolite
(dikes and sheets)

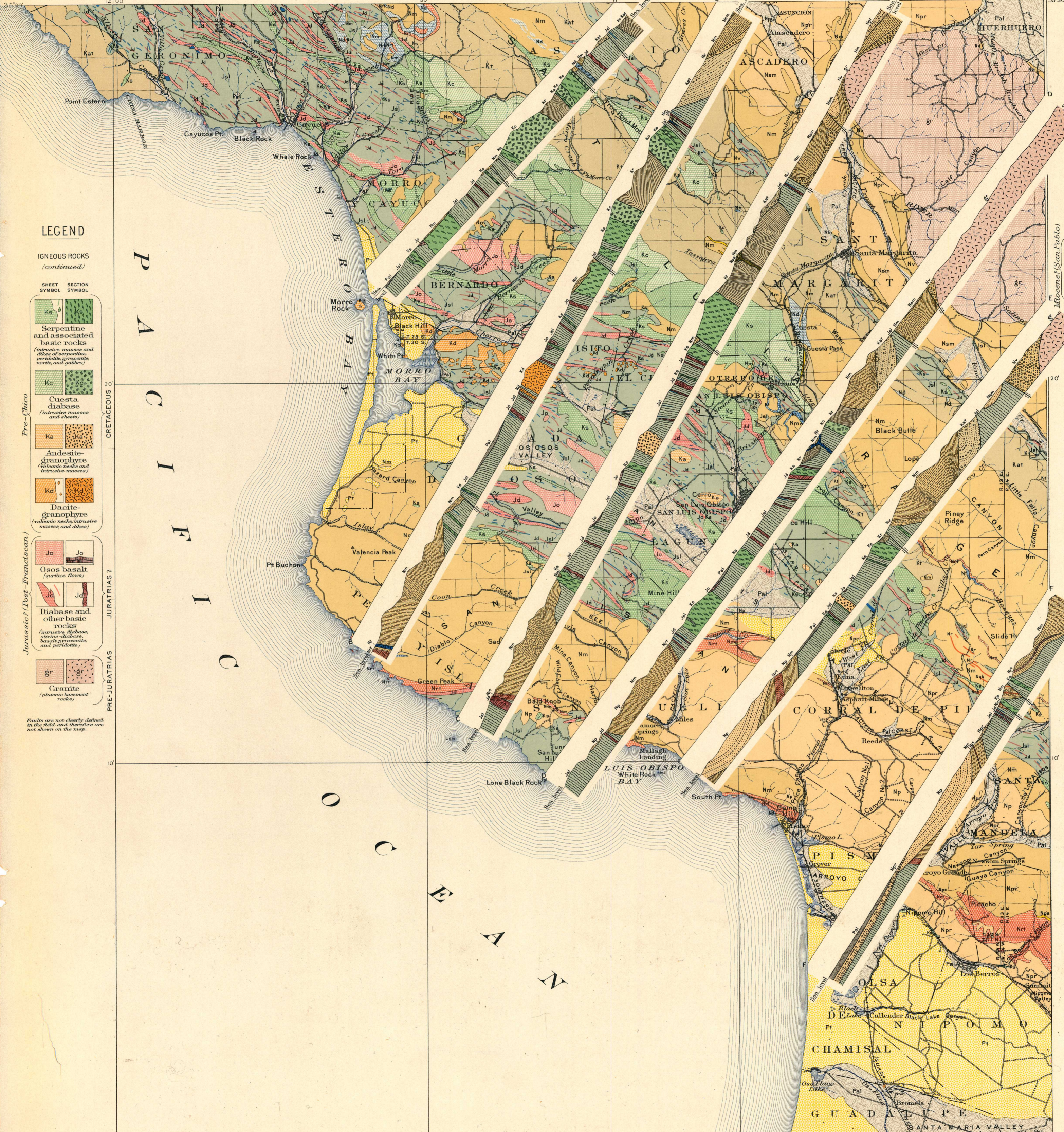
Rhyolite-tuff
(interstratified with the Monterey shale)

Pyroxene andesite
(dikes)

Miocene (Pre-San Pablo)

NEOGENE

LEGEND IS CONTINUED ON THE LEFT MARGIN.



Henry Gannett, Chief Topographer.
R. U. Goode, Geographer in charge.
Triangulation by U.S. Coast and Geodetic Survey.
Topography by L. C. Fletcher and U.S. Coast and Geodetic Survey.
Surveyed in 1895.

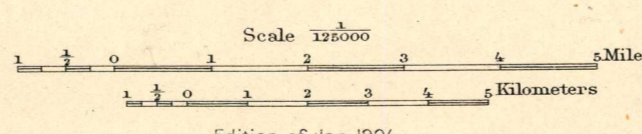


DIAGRAM OF TOWNSHIP

6 5 4 3 2 1
7 8 9 10 11 12
13 14 15 16 17 18
19 20 21 22 23 24
25 26 27 28 29 30
31 32 33 34 35 36

Geology by Harold W. Fairbanks.
Surveyed in 1897, 98, and 99.