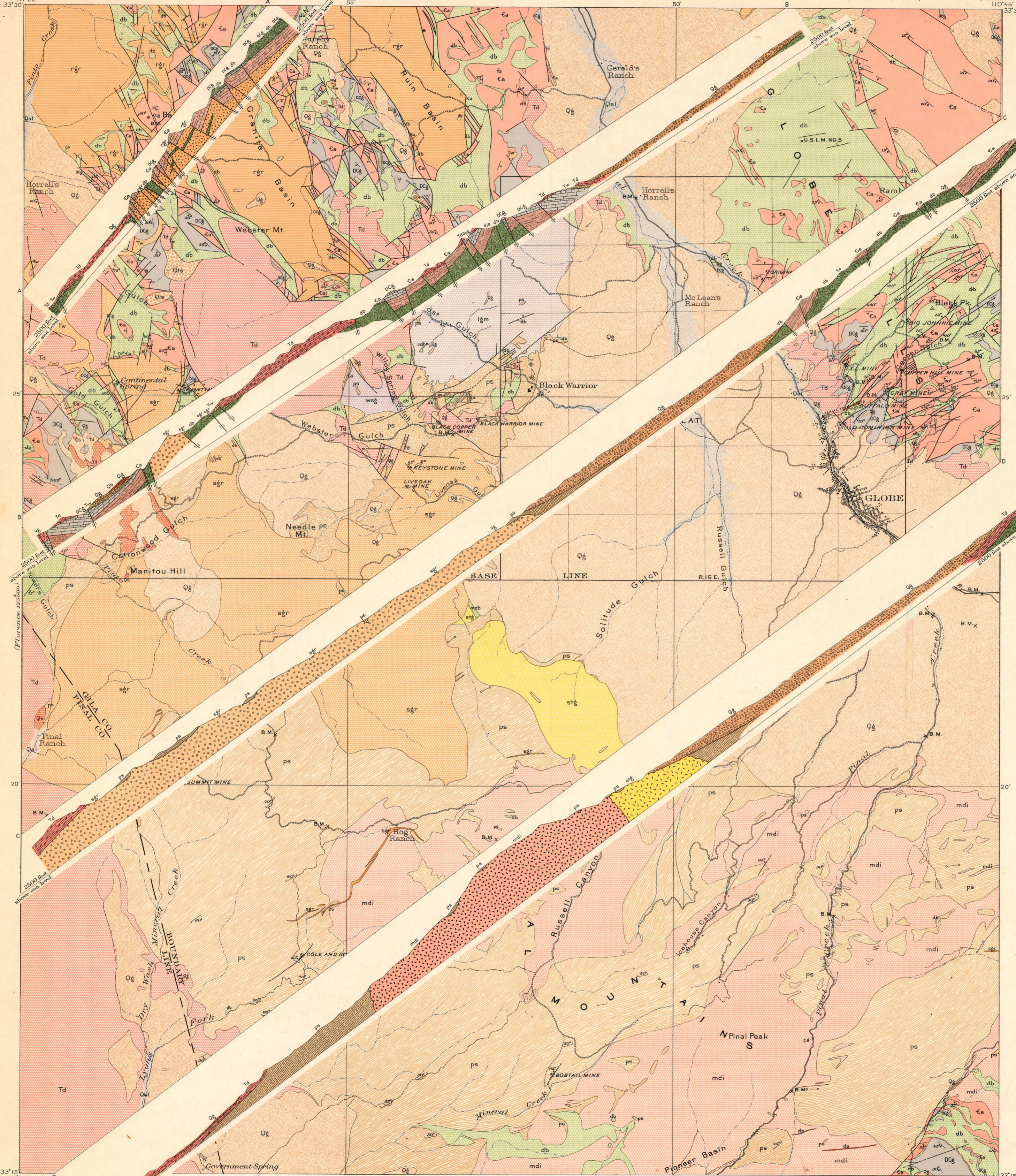


STRUCTURE SECTIONS

LEGEND

- SHEET SYMBOL**
- Qls**
Landslides
(composed chiefly of blocks of strata)
- SEDIMENTARY ROCKS**
- SHEET SYMBOL SECTION SYMBOL**
- Qal**
Alluvium
(sands and gravels along present streamways and in small valleys)
- Qg**
Gila conglomerate
(irregularly bedded conglomerate, breccias, grits, and turfs)
- Tw**
Whitetail formation
(thinly bedded, usually fragmentary, shales and limestones)
- DCg**
Globe limestone
(bedded and gray limestone, in beds ranging in thickness from 1 to 6 feet)
- Ca**
Apache group
(shaly quartzite, with subordinate amounts of shale and conglomerate)
- ps**
Pinal schist
(massive or schistose, with irregularly bedded, micaceous, and shaly layers, and schistose cleavage)
- IGNEOUS ROCKS**
- SHEET SYMBOL SECTION SYMBOL**
- Qb**
Basalt
(surface flow intercalated in Gila conglomerate, and underlying mass)
- Td**
Dacite
(surface flow and underlying bed)
- dp**
Diorite porphyry
(small dikes and dikes intrusive in Globe limestone, Apache group, Madera diorite, and Gila conglomerate; too small to represent on the map)
- db**
Diabase
(intrusive in Globe limestone and Apache group, as thick dikes and irregular masses)
- mdb**
Metadiabase
(intrusive mass in Pinal schist)
- wsg**
Willow Spring granite
(intrusive mass of granite in Pinal schist)
- lgn**
Lost Gulch monzonite
(intrusive mass of alkali-silica or quartz monzonite in Pinal schist)
- rg**
Ruin granite
(granite or diorite-granite, extensive, underlying the northern part of the quadrangle)
- sg**
Schultze granite
(extensive batholithic mass of granite or diorite-granite, in west central part of quadrangle, and associated with granite porphyry)
- stg**
Solitude granite
(granite and muscovite-granite, intrusive mass in Pinal schist)
- mdi**
Madera diorite
(quartz monzonite, extensive batholithic mass intruding in Pinal schist in southern portion of the quadrangle)
- Known faults**
(occasionally accompanied by mineralization)
- Concealed faults**
(covered by younger deposits)
- Probable faults**



E. M. Douglas, Geographer in charge.
Triangulation by A. H. Thompson.
Topography by W. J. Lloyd.
Surveyed in 1900-1901.

Scale 62500
Miles
Kilometers

DIAGRAM OF TOWNSHIP.
6 5 4 3 2 1
7 8 9 10 11 12
13 14 15 16 17 18
19 20 21 22 23 24
25 26 27 28 29 30
31 32 33 34 35 36

Geology by F. L. Ransome.
Assisted by J. D. Irving.
Surveyed in 1901 and 1902.

Edition of July 1904.

45° Strike and dip of stratified rocks
Horizontal beds
60° Dip of fault planes
45° Strike and dip of schistose cleavage
Strike of vertical schistose cleavage