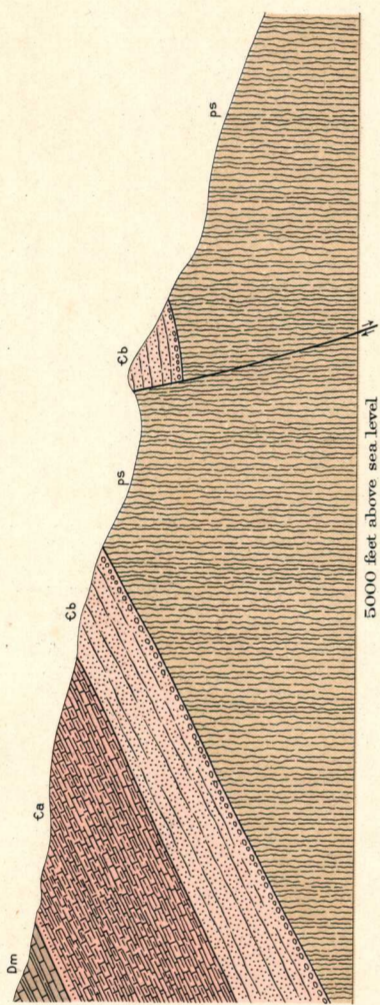
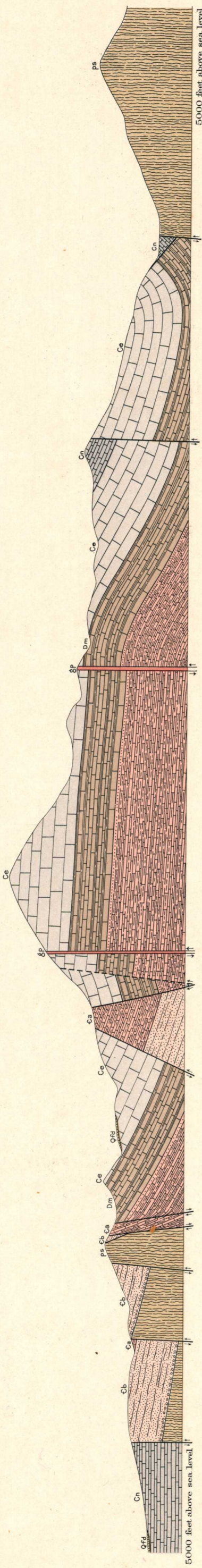


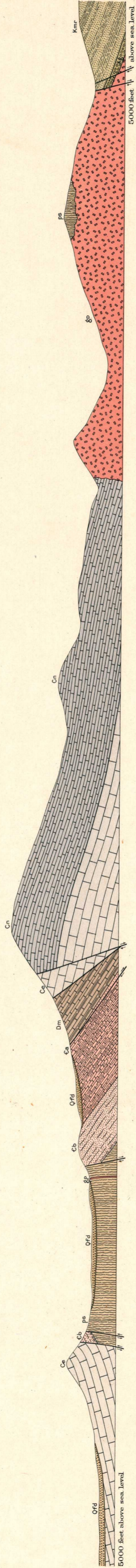
Section A - A.



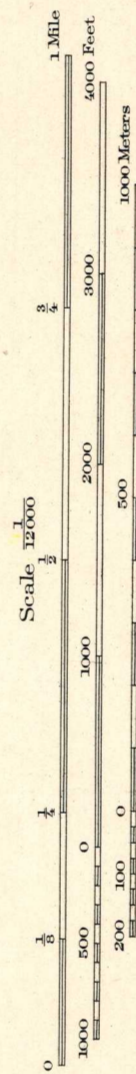
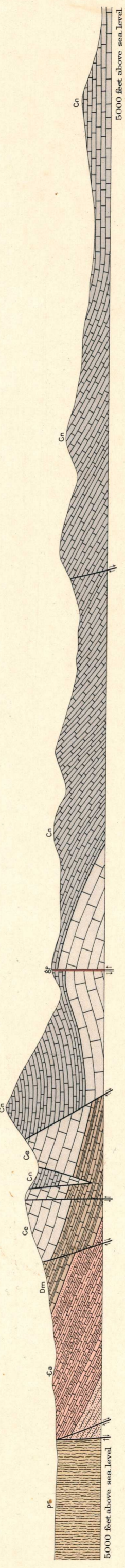
Section B - B.



Section C - C.



Section D - D.



LEGEND

- SEDIMENTARY ROCKS**
- QUATERNARY**
 - Qfd
Fluvatile deposits
(conglomeratic with im-
perfectly rounded pebbles,
gravel, and sands)
 - CRETACEOUS**
 - Comanche series (Bisbee group)
 - Kmr
Morita formation
(alternating beds of dull-red
arenaceous shale and lustrous
sandstone with occasional
grits and limestone lenses)
 - K&G
Glance conglomerate
(basal conglomerate of
varying character, peb-
bles imperfectly round-
ed and chiefly schist
and limestone roughly
bedded and contains
some shale and sand-
stone)
 - CARBONIFEROUS**
 - Mississippian-Pennsylvanian series
 - Cn
Naco limestone
(thin bedded to thick-bed-
ded, compact, non-mag-
nesian, white, gray or pink,
shale limestone with subordi-
nate shaly fossils abun-
dant)
 - Ce
Escabrosa limestone
(thick bedded, non mag-
nesian, white, rounded
limestone of granular
texture)
 - DEVONIAN**
 - Dm
Martin limestone
(dark gray, compact non-
magnesian limestone in
beds of massive, block-
mass, fossils abundant,
subordinate gray, calcareous
shale)
 - CAMBRIAN**
 - Ca
Abrego limestone
(thin bedded, cherty, lam-
inated, impure limestone
with some calcareous shale;
locally dolomitic, sandy in
upper portion)
 - Cb
Balsa quartzite
(basal conglomerate,
thick bedded, pebbly,
arkose grits, and fine-
grained, vitreous
quartzite)
 - PRE-CAMBRIAN**
 - ps
Pinal schist
(fine grained, basaltic
quartz, sericite schists;
probably metamor-
phosed sediments)
 - IGNEOUS ROCKS**
 - gp
Granite-porphry
(with some rhyolite, in-
trusive masses, dikes,
and sills)
 - TRIASSIC OR JURASSIC**
 - Known faults
(occasionally accompanied
by minor dislocation)
 - Probable faults

