

LEGEND

IGNEOUS ROCKS
(continued)

Jep
Serpentine
(stock of altered peridotite)

Jha
Various dikes
(andesite, porphyry, diorite,
hornblende, quartz, and
hornblende, etc.)

Jad
Quartz-augite-
diorite
(intrusive masses
and dikes)

Jhd
Quartz-hornblende-
diorite
(batholith and stocks,
includes a stock of
quartz-mica-diorite, Jmd)

Jb
Bagley andesite
(flows and tuffs)

Jbh
Bully Hill rhyolite
(flows and tuff, includes
some dikes and sheets
of later age)

Jd
Dedens andesite
(chiefly flows and tuffs,
with some fossiliferous
tuffaceous shales)

Cbm
Bass Mountain
diabase
(flows and tuffs,
partly interbedded in
Bragdon formations)

br
Balaklala rhyolite
(altered rhyolitic lava
and tuff, also dikes)

cma
Copley meta-
andesite
(lava and tuff)

Sections
A
B
C
D
E

as strike and dip of stratified
rocks

Gold and copper veins

Mines and quarries

Prospects

Gold quartz

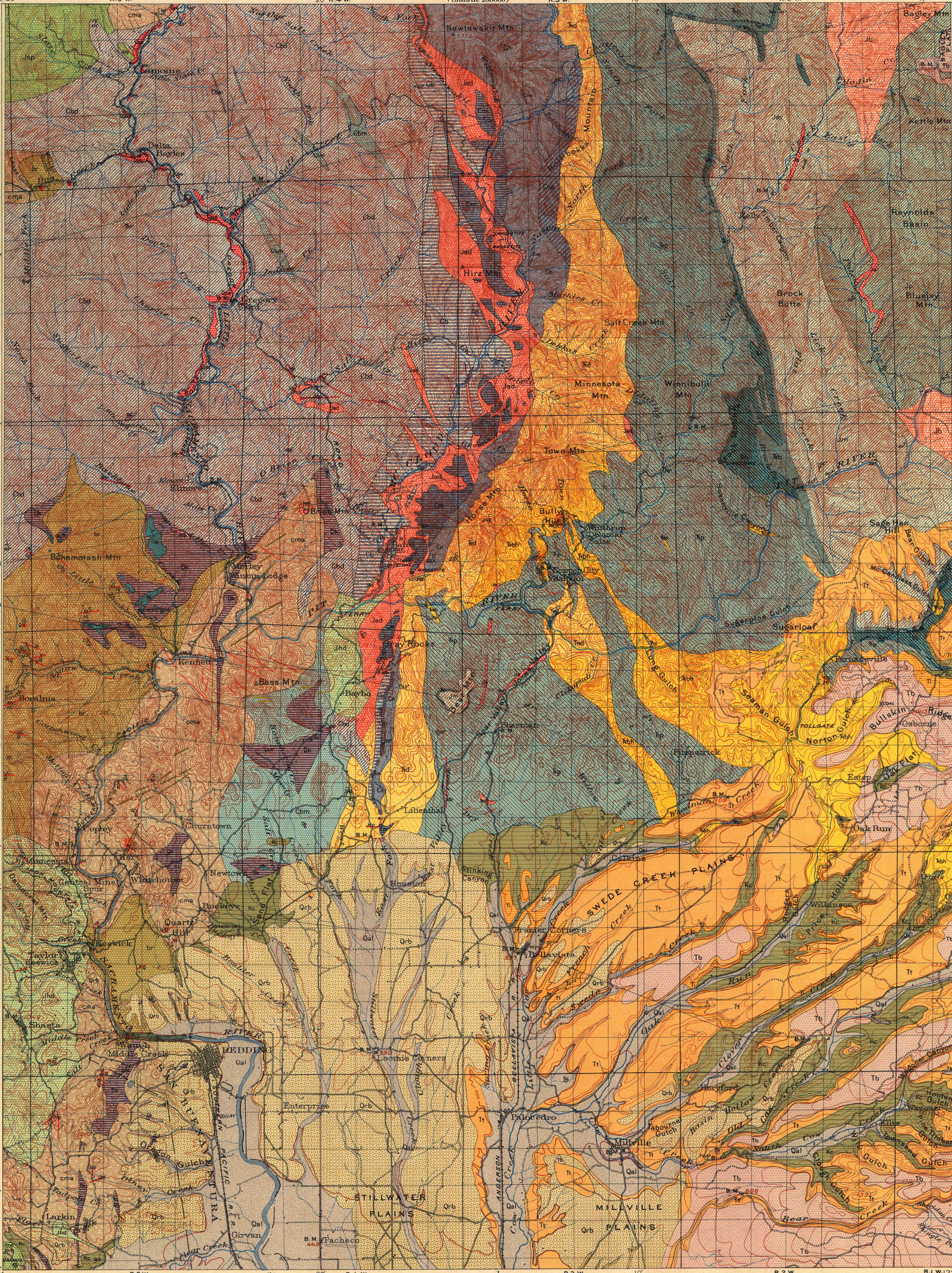
Gold placers

Gold placer (dredge)

Copper

NAMES OF MINES AND PROSPECTS.

- Position indicated on map by numbers.
1. Q. Crown Deep.
 2. Q. Bracket.
 3. Q. Old Spanish.
 4. Q. Quartz Hill.
 5. Q. Old Diggings group.
 6. Q. Star of Hope.
 7. Q. National.
 8. C. King Copper.
 9. C. Spread Eagle.
 10. C. Balaklala.
 11. C. Shasta King.
 12. Q. Uncle Sam group.
 13. Q. Clipper.
 14. C. Friday and Lowden.
 15. C. Mammoth.
 16. C. Golinski.
 17. C. Summit.
 18. Q. Beien.
 19. C. Memorial.
 20. C. Black Diamond.
 21. C. Roseman.
 22. C. Alex and Allen.
 23. C. Graham.
 24. C. Tip Top.
 25. C. Copper City group.
 26. C. Rising Star.
 27. E. Bully Hill.
 28. C. Afterthought.



LEGEND

SEDIMENTARY ROCKS

(Areas of subvolcanic
deposits are shown by
patterns of parallel lines,
subaerial deposits by
patterns of dots and
circles)

Qal
Alluvium
(silt sand, and gravel
in flood plains)

Qrb
Red Bluff
formation
(gravel with layers of
sand and a few large
boulders)

UNCONFORMITY

Tr
Tuscan tuff
(chiefly tuff in large part
coarse agglomerate, and
some gravel and sand)

Ti
Ione formation
(sand containing gravel
above and clay and coaly
material below)

UNCONFORMITY

Kc
Chico formation
(conglomerate overlain by
sandstone and shale)

UNCONFORMITY

Jb
Potem formation
(shale and thin-bedded
sandstone with small
limestone lenses, ls,
and some tuffaceous
conglomerate)

Jm
Modin formation
(tuffaceous beds, chiefly
conglomerate overlain
by gray sandstone and
shale, with small lime-
stone lenses, ls)

UNCONFORMITY

Tb
Brock shale
(dark below reddish
and sandy above)

Hs
Hosselkus
limestone
(gray limestone, some
thinner bedded and
barrier below)

Fit
Fit formation
(black gray shale,
with thin-bedded sand-
stone and much strati-
fied tuff)

Cn
Nosoni formation
(chiefly tuffaceous beds
with interstratified shale,
sandstone, and a few
limestone lenses)

Cm
Mc Cloud
limestone
(massive gray limestone
with chert layers and
nodules toward the south,
occurs only in lenses)

Cb
Baird formation
(chiefly red to white tuff
and overlying fossiliferous
tuffaceous sandstone and
shale)

Cbd
Bragdon
formation
(thin-bedded shale, sand-
stone and conglomerate
composed chiefly of this
mass of Kennett formation)

UNCONFORMITY

Dk
Kennett
formation
(black shale, chert, and
thin-bedded sandstone,
with large lenses of
limestone, ls)

ls
Limestone lenses
(in Kennett, Modin, and
Potem formations)

Qpe
Igneous rocks
(Areas of igneous rocks
are shown by patterns of
triangles and rhombs,
metamorphism is indi-
cated by hachures)

Qpx
Pyroxene-
andesite
(lava flows from
Mount Shasta)

Tb
Basalt
(lava flows contemporane-
ous with Tuscan tuff)



DIAGRAM OF TOWNSHIP

6	8	4	3	2	1
7	8	9	10	11	12
18	17	16	15	14	13
10	20	21	22	23	24
30	29	28	27	26	25
31	32	33	34	35	36

Geology by J.S. Diller,
assisted by James Storrs,
H.R. Johnson, Chester Washburne,
G.B. Richardson, and Frank L. Hess.
Surveyed in 1901-1904.

Legend is continued
on the left margin.

(Lassen Peak section)