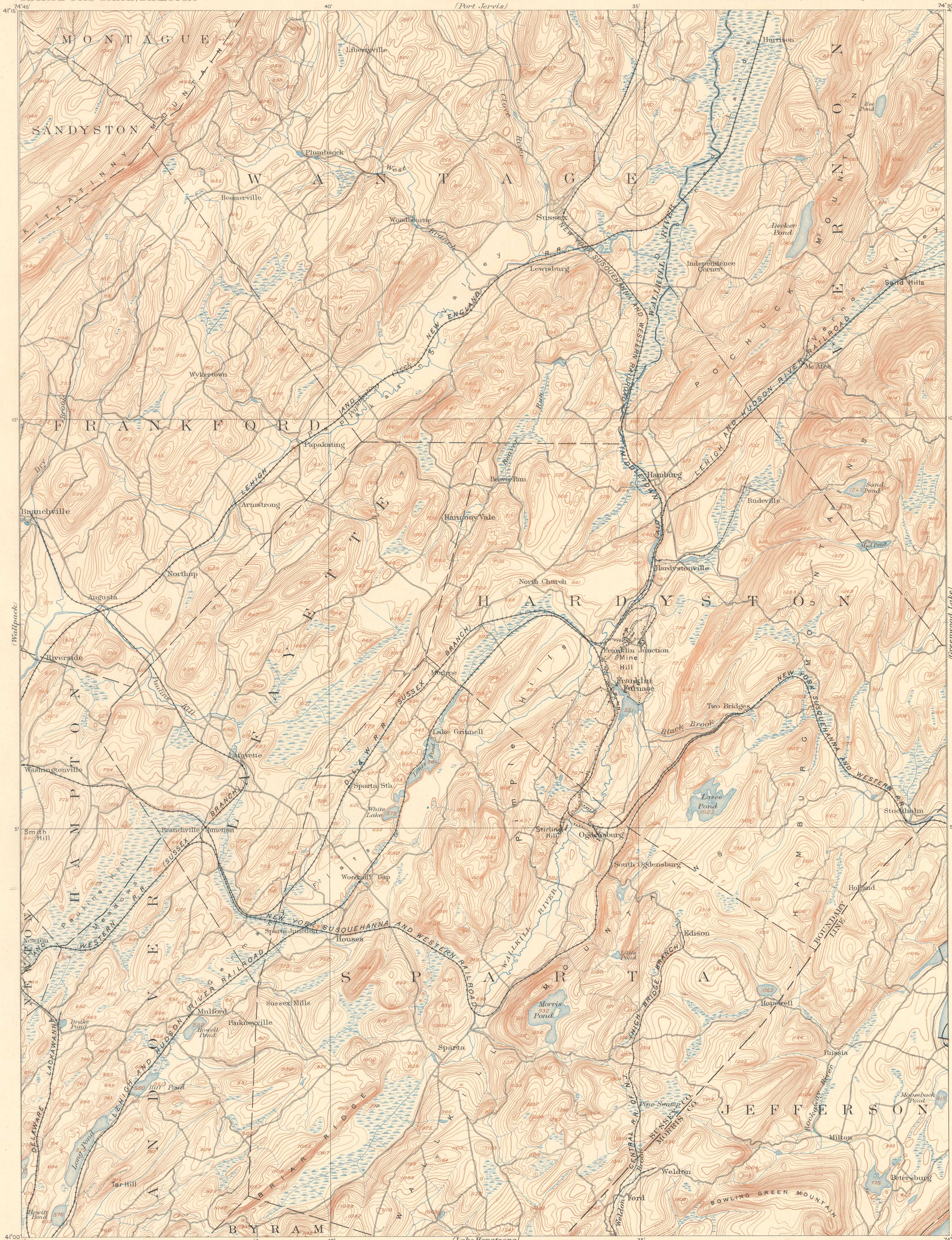


TOPOGRAPHY

U.S. GEOLOGICAL SURVEY
GEORGE OTIS SMITH, DIRECTOR

STATE OF NEW JERSEY
HENRY B. KÜMMEL
STATE GEOLOGIST
(Port Jarvis)

NEW JERSEY
FRANKLIN FURNACE QUADRANGLE



LEGEND

RELIEF
printed in brown

Figures
showing heights above
mean sea level, unless
noted otherwise

Contours
showing height above
sea level, horizontal form,
and steepness of slope
of the surface

Depression
contours

DRAINAGE
printed in blue

Streams

Ponds

Fresh marshes

CULTURE
printed in black

Roads and
buildings

Private and
secondary roads

Railroads

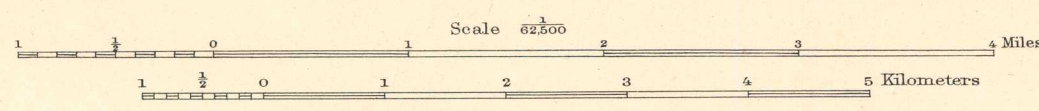
Dams and
reservoirs

County lines

Township lines

Triangulation
stations

Triangulation by the U.S. Coast and Geodetic Survey.
Topography by the Geological Survey of New Jersey, Surveyed in 1894.
Partial revision in 1898 under the direction of H.M. Wilson, Geographer,
by Albert Pike.



Scale 42200
Contour interval 20 feet.
Datum is mean sea level.

Edition of Feb. 1903, reprinted Mar. 1908.