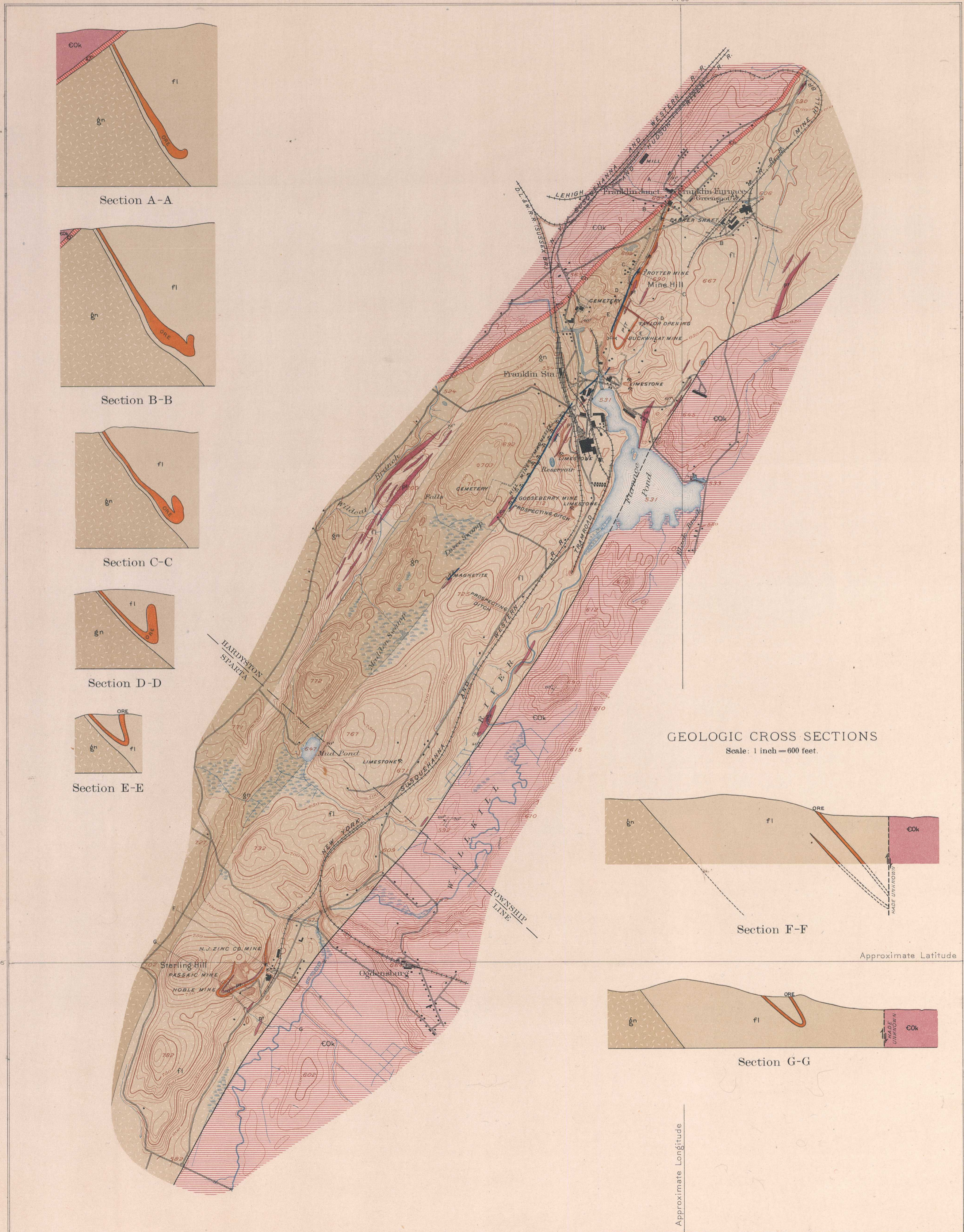


ECONOMIC GEOLOGY

U.S. GEOLOGICAL SURVEY
GEORGE OTIS SMITH
DIRECTOR

STATE OF NEW JERSEY
HENRY B. KÜMMEL
STATE GEOLOGIST

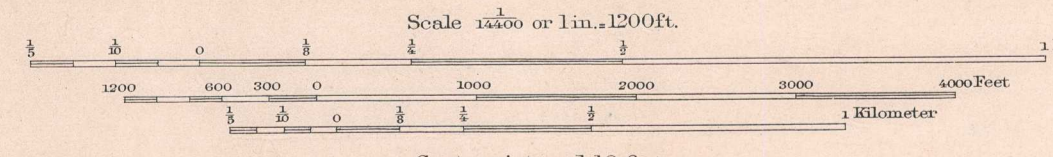
NEW JERSEY
(SUSSEX COUNTY)
FRANKLIN FURNACE SPECIAL MAP



LEGEND

- PALEOZOIC ROCKS
- Basic dikes (comptonite)
 - Kittatinny limestone (blue limestone, often magnesian, with occasional cherty layers)
 - Hardyston quartzite (siliceous, ferruginous, calcareous, and in part talciferous)
- PRE-CAMBRIAN ROCKS
- Pegmatite (coarse, obscurely foliated granite, quartz, quartzes and bledgry)
 - Franklin limestone (coarsely crystalline, roughly foliated, white limestone (marble containing graphite, chert, druse, pyroces, and other accessory minerals))
 - Gneiss (composed of dark and light layers, the latter usually iron-stained)
- Known mineral deposits
- Outcrop of zinc ore bodies
 - Magnetite outcrop
- Faults
- Strike and dip of sedimentary rocks
for strike and dip of foliation or cleavage
- Shafts
 - Mines and quarries
 - Prospects
 - Tunnels

H.M. Wilson, Geographer in charge.
Topography by Albert Pike.
Surveyed in 1898.



Contour interval 10 feet.
Datum is mean sea level.
Edition of April 1908.

Geology by Arthur C. Spencer.
Surveyed in 1905.