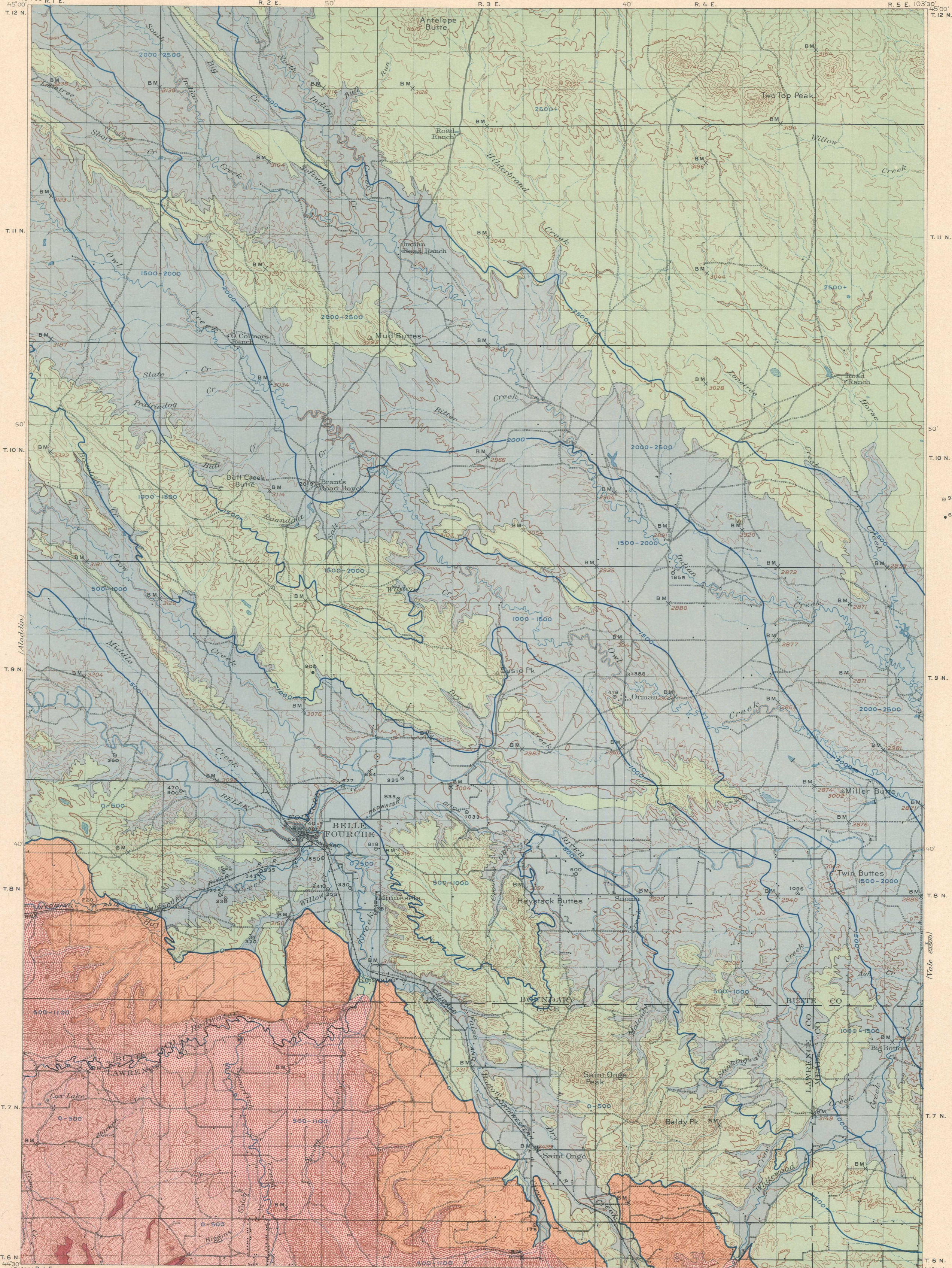


ARTESIAN WATER



LEGEND

- Area in which Dakota sandstone will probably yield flowing wells
- Area in which Dakota sandstone will probably yield pumping wells
- Depth to Dakota sandstone  
(artesian water may be expected from 5 to 200 feet below the top of the formation)
- Outcrop of Dakota and associated underlying sandstones  
(area in which surface waters enter water-bearing strata)
- Depth to Minnelusa sandstone  
(from which flowing water can probably be obtained; the water can probably also be had from underlying Pottsville limestone, 500 to 1000 feet deeper)
- Outcrop of Minnelusa sandstone
- 935 Flowing wells  
Depth in feet
- 627 Deep borings that failed to reach Dakota water-bearing sandstone

Scale 1:25,000  
 E.M. Douglas, Geographer,  
 W.H. Herron, in charge of section,  
 Topography by W.H. Herron, Chester Irvine,  
 J.E. Blackburn, S.P. Floore, and R.M. La Follette.  
 Triangulation by A.E. Dunnington and R.B. Robertson.  
 Surveyed in 1905-1906.

Scale 1:25,000  
 0 1 2 3 4 5 Miles  
 0 1 2 3 4 5 Kilometers  
 Contour interval 50 feet.  
 Datum is mean sea level.  
 Edition of Jan. 1909.

DIAPHRAGM TOWNSHIP  
 63 2 2 1  
 7 8 9 10 11 12  
 13 14 15 16 17 18 19 20  
 21 22 23 24  
 25 26 27 28 29 30  
 31 32 33 34 35 36

Geology by N.H. Darton  
 and C.C. Hanna  
 Surveyed in 1905-1906.