

LEGEND
(continued)

METAMORPHIC ROCKS
OF UNKNOWN ORIGIN

Arts
Schist and gneiss
(Areas of metamorphic rocks of unknown origin are shown by hachures)

IGNEOUS ROCKS

(Areas of igneous rocks are shown by patterns of triangles and rhombs; metamorphism is indicated by hachures)

lp
Lampphyric dikes

qtz
Quartz trachyte
(a nepheline rock occurring in dikes and laccoliths)

tmz
Monzonite
(a granular rock forming a large stock)

tmpr
Monzonite porphyry
(the common intrusive rock of the Rio Montezuma occurs in dikes and sheets and small laccoliths)

gb
Gabbro
(a batholith cutting granite and schist)

eg
Eolus granite
(coarse-grained hornblende biotite granite)

twg
Twilight granite
(light gray to pink granite, which predominates in the area indicated)

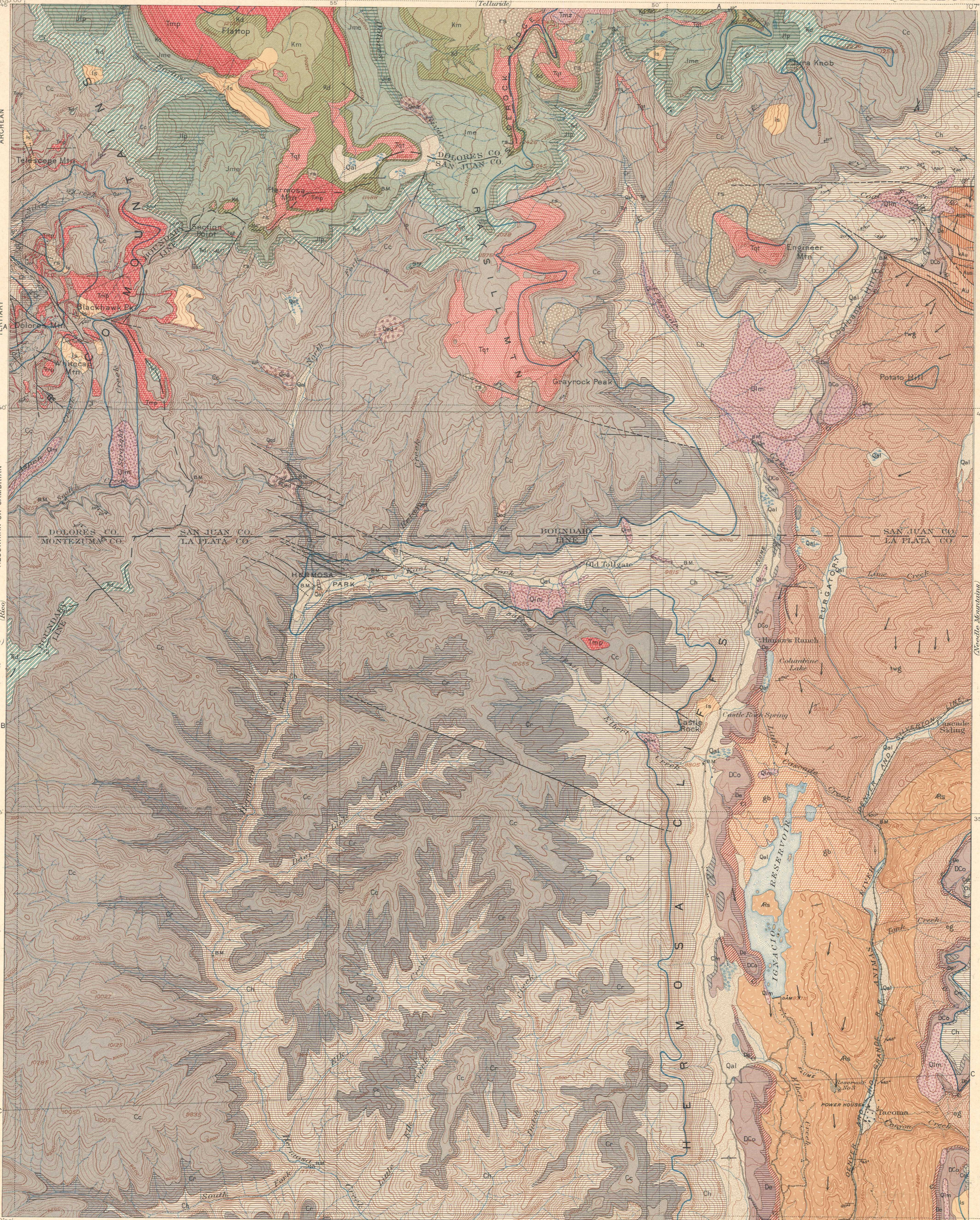
Faults

Concealed faults
(covered by surficial deposits)

45° Strike and dip of stratified rocks

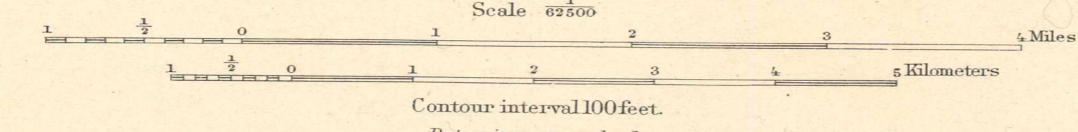
Strikes of vertical strata

Glacial striae
x Silver prospect



Recent	Quaternary	Tertiary	Cretaceous	Jurassic	Triassic	Carboniferous	Devonian	Cambrian	Algonkian
Qal	Qal	Tb	Km	Jme	Fd	Cr	De	Er	Au
Alluvium (conventional fine sand and stream gravels)	Upper limit of later glaciation	Telluride conglomerate (pebbles and boulders of schist, quartzite and gneiss)	Mancos shale (dark fossiliferous shale with local calcareous and sandy layers)	McElmo formation (alternating sandstones and shales)	Dolores formation (red grits, sandstones, and shales, and occasional layers of fossiliferous calcareous shale base)	Cutler formation (sandstone, grit, conglomeration, and some calcareous shale prevailing color red)	Ouray limestone (white or light gray, saccharoidal limestone, with a few quartzite layers; fossiliferous)	Ignacio quartzite (thin bedded, gray or pink, wavy quartzite with small markings on sharp partings)	Uncompahgre formation (massive and thin bedded, light to dark quartzite, locally conglomeratic, with dark shale, slate and argillite, Au)
Qal	Qim	Qed	Dco	La Plata sandstone (white to gray sandstone with thin blue limestone or calcareous shale)	UNCONFORMITY	Hermosa formation (sandstone, shale, and limestone prevailing color; fossiliferous)	Elbert formation (thin bedded, gray and pink, wavy quartzite with small markings on sharp partings)	UNCONFORMITY	UNCONFORMITY
Qal	Qim	Qed	Dco	La Plata sandstone (white to gray sandstone with thin blue limestone or calcareous shale)	UNCONFORMITY	Hermosa formation (sandstone, shale, and limestone prevailing color; fossiliferous)	Elbert formation (thin bedded, gray and pink, wavy quartzite with small markings on sharp partings)	UNCONFORMITY	UNCONFORMITY
Qal	Qim	Qed	Dco	La Plata sandstone (white to gray sandstone with thin blue limestone or calcareous shale)	UNCONFORMITY	Hermosa formation (sandstone, shale, and limestone prevailing color; fossiliferous)	Elbert formation (thin bedded, gray and pink, wavy quartzite with small markings on sharp partings)	UNCONFORMITY	UNCONFORMITY

E.M. Douglas, Geographer in charge.
Triangulation by E.M. Douglas.
Topography by W.M. Beaman.
Surveyed in 1897-98.



Scale 62500
Contour interval 100 feet.
Datum is mean sea level.
Dotted lines show corrected position of meridians and parallels.
Edition of Sept. 1909.

Geology by Whitman Cross,
assisted by A.C. Spencer, Ernest Howe,
A. Johansen, W.H. Emmons, and H. Bancroft.
Glacial geology by A.D. Hole.
Survey completed 1908.

Legend is continued on the left margin.