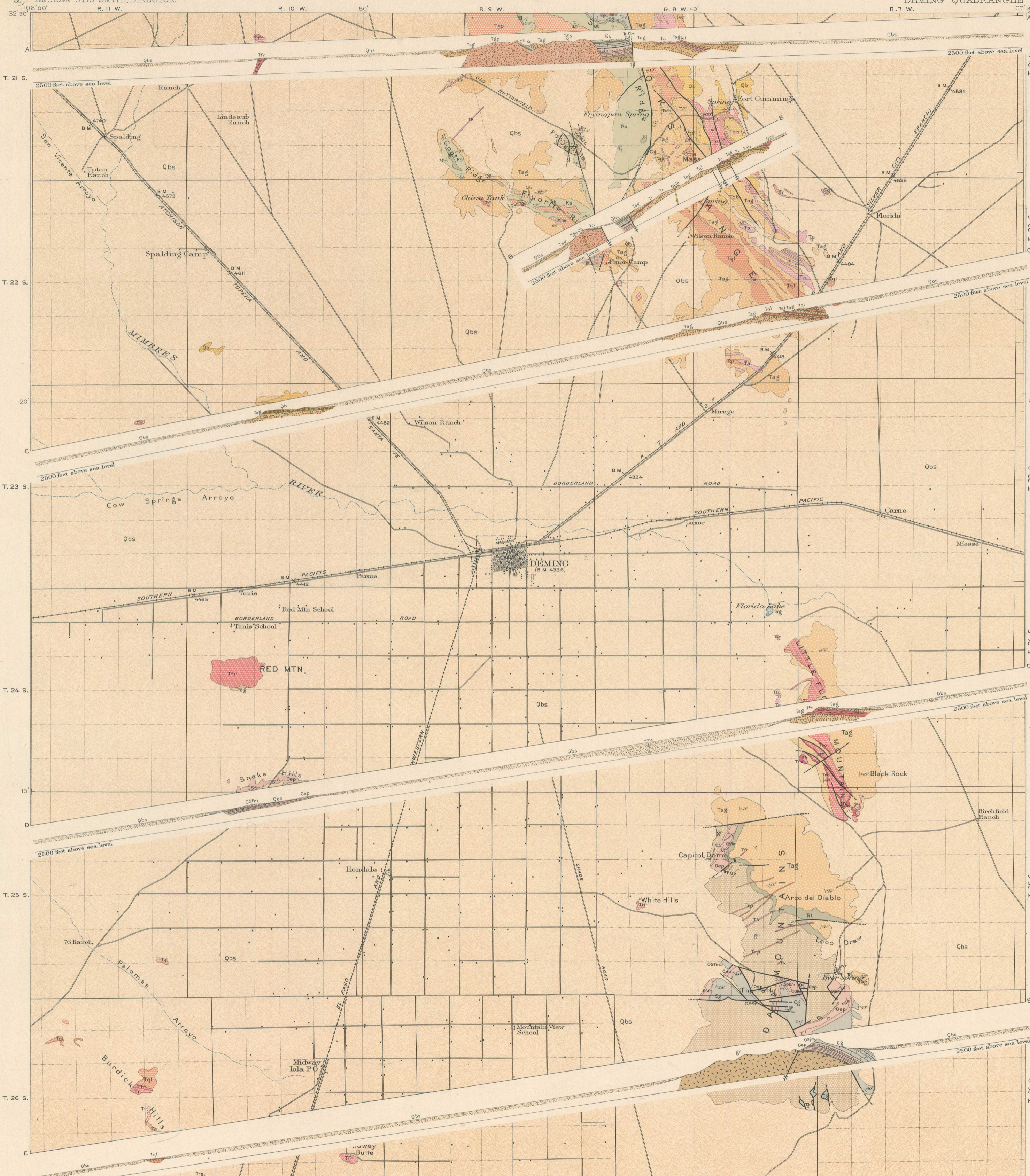


STRUCTURE SECTIONS

LEGEND

SEDIMENTARY ROCKS		
SHEET SYMBOL	SECTION SYMBOL	
Obs	Obs	QUATERNARY
Bolson deposits (gravel, sand, silt, and clayey loess below or above desert plains)		
Tag	Tag	TERTIARY
Agglomerate and asso- ciated detrital rocks (chiefly coarse agglomerate or massive breccia of ande- sitic and basaltic fragments, tuff and volcanic ash, and some sandstones and con- glomerate)		
Kc	Kc	CRETACEOUS
Colorado shale (dark gray shale with lime concretions and sandy layers)		
Ks	Ks	
Sarten sandstone (massive, hard, light- gray limestone)		
Tl	Tl	TRIASSIC?
Lobo formation (red and gray shale, impure limestone, and sandstone)		
Cg	Cg	CARBONIFEROUS
Gym limestone (gray massive limestone, in part brecciated, and dark-gray shale)		
Clv	Clv	
Lake Valley limestone (gray limestone and lime shale with some chert at top)		
Dp	Dp	DEVONIAN
Percha shale (dark gray to black finely bedded shale)		
OSfm	OSfm	SILURIAN
Fusselman and Montoya limestones (dark massive limestone at base and gray lime- stone in part bedded with chert layers com- prising Montoya lime- stone; also overlain locally by gray massive Beau- mont limestone of Niagara age)		
Oep	Oep	ORDOVICIAN
El Paso limestone (light gray shaly limestone)		
Cb	Cb	CAMBRIAN
Bliss sandstone (massive gray to buff sand- stone, shaly near top)		
RESTS ON SMOOTHED ERODED SURFACE OF PRE-CAMBRIAN GRANITE		
IGNEOUS ROCKS		
Qb	Qb	QUATERNARY
Basalt (chiefly lava flows of hard black basaltic rock; includes some dikes)		
Trp	Trp	
Rhyolite porphyry (dikes)		
Trf	Trf	
Felsitic rhyolite (chiefly lava flows of white felsite with black volcanic glass or obsi- dian; locally also includes some dikes)		
Tr	Tr	
Rhyolite (hornblende rhyo- lite, in part porphyritic; chiefly lava flows in- cludes some dikes)		
Tk	Tk	TERTIARY
Keratophyre (dikes and shaly inter- bedded in the agglomerate)		
Tqb	Tqb	
Quartz basalt (lava flows interbedded in the agglomerate)		
Ta	Ta	
Andesite (chiefly lava flows inter- bedded in the agglomerate; includes some dikes)		
Tal	Tal	
Quartz latite (lava flows interbedded in the agglomerate)		
Tgp	Tgp	
Granite porphyry (including quartz-mono- zonite porphyry, quartzite, sills, and dikes)		
Gr	Gr	PRE-CAMBRIAN
Granite (massive, coarse-grained, locally gneissic, dy- clic and dike of amphib- ole and diabase includ- ed in mapping)		
Faults		
Concealed faults (covered by younger deposits)		



A.H. Thompson, Geographer.
R.U. Goode, Topographer in charge.
Triangulation by Wheeler Survey.
Topography by R.O. Gordon.
Surveyed in 1892.
Culture revised by E.P. Davis, 1914.
R.B. Marshall, Chief Geographer.

Scale 1:25,000
1 2 3 4 5 Miles
1 2 3 4 5 Kilometers
Contour interval 100 feet.
Datum is mean sea level.
Edition of April 1916.

DIAGRAM OF TOWNSHIP
Geology by N.H. Darton
Surveyed in 1910-1913.

Not strike and dip of stratified rocks