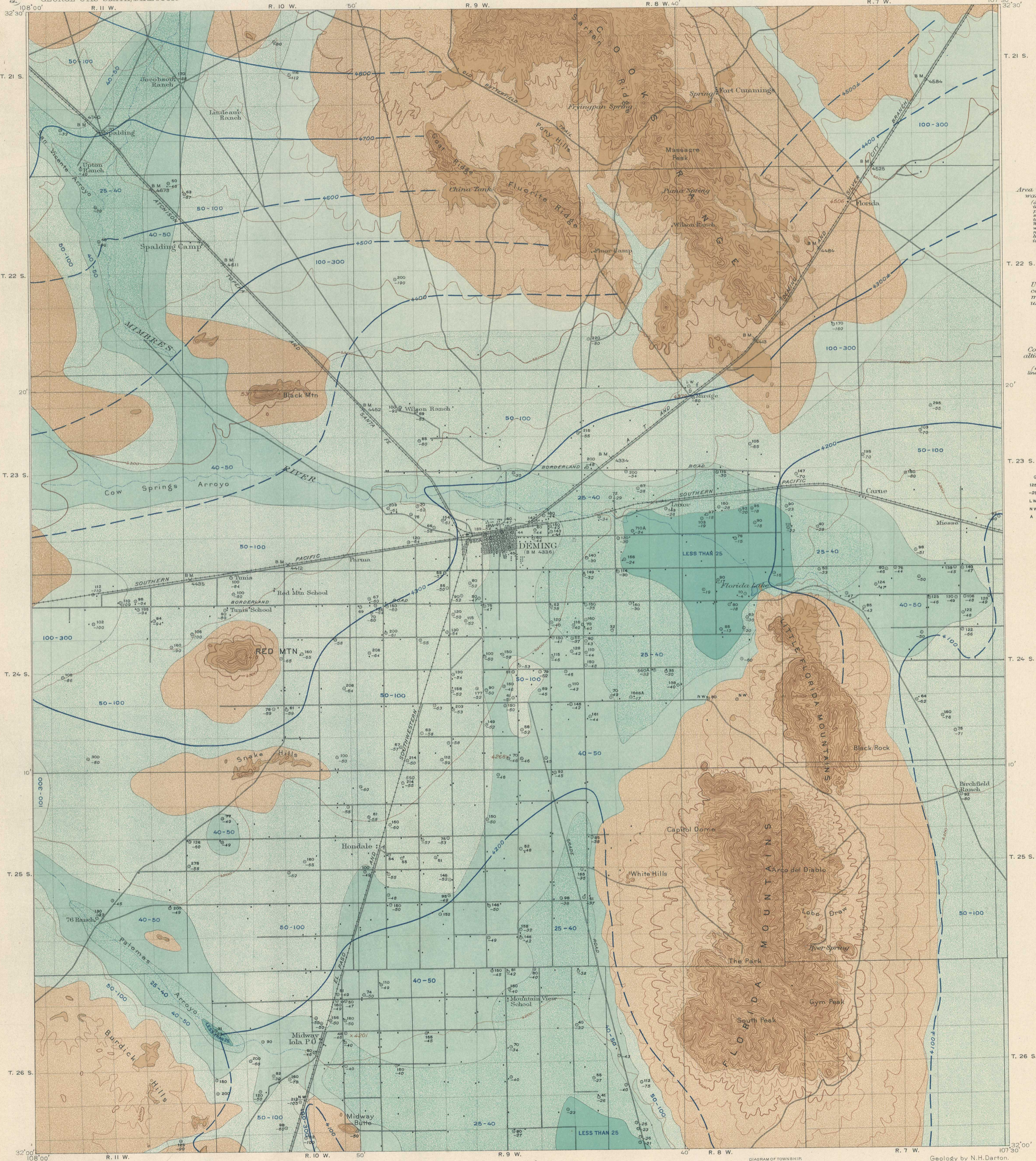


UNDERGROUND WATER



LEGEND

LESS THAN 25
25-40
40-50
50-100
100-300

Area in which underground water can be obtained (depth in feet to water in wells indicated by contours; wells must be sunk to greater depth to obtain large supplies. Water generally plentiful where depth to water is not more than 100 feet, but more doubtful where depth is 100 to 300 feet (some wells doubtful).)

Underground-water conditions not determined, but probably unfavorable at most places.

Contour lines showing altitude of underground-water surface (vertical interval 100 feet, lines dashed where position is doubtful).

Rock outcrops (outline approximate; no water obtainable except in widely scattered seeps or fissures).

- Wells
- 125 Depth of well in feet
- 25 Depth to water in wells
- LW Little water
- NW Good water not obtained
- A Deep artesian well

A.H. Thompson, Geographer.  
R.U. Goode, Topographer in charge.  
Triangulation by Wheeler Survey.  
Topography by R.O. Gordon.  
Surveyed in 1892.  
Culture revised by E.P. Davis, 1914.  
R.B. Marshall, Chief Geographer.

APPROXIMATE MEAN DECLINATION 1916.

Scale 1:250,000  
1 2 3 4 5 Miles  
1 2 3 4 5 Kilometers  
Contour interval 100 feet.  
Datum is mean sea level.  
Edition of June 1916.

DIAGRAM OF TOWNSHIP

6	5	4	3	2	1																				
7	6	5	4	3	2	1																			
8	7	6	5	4	3	2	1																		
9	8	7	6	5	4	3	2	1																	
10	9	8	7	6	5	4	3	2	1																
11	10	9	8	7	6	5	4	3	2	1															
12	11	10	9	8	7	6	5	4	3	2	1														
13	12	11	10	9	8	7	6	5	4	3	2	1													
14	13	12	11	10	9	8	7	6	5	4	3	2	1												
15	14	13	12	11	10	9	8	7	6	5	4	3	2	1											
16	15	14	13	12	11	10	9	8	7	6	5	4	3	2	1										
17	16	15	14	13	12	11	10	9	8	7	6	5	4	3	2	1									
18	17	16	15	14	13	12	11	10	9	8	7	6	5	4	3	2	1								
19	18	17	16	15	14	13	12	11	10	9	8	7	6	5	4	3	2	1							
20	19	18	17	16	15	14	13	12	11	10	9	8	7	6	5	4	3	2	1						
21	20	19	18	17	16	15	14	13	12	11	10	9	8	7	6	5	4	3	2	1					
22	21	20	19	18	17	16	15	14	13	12	11	10	9	8	7	6	5	4	3	2	1				
23	22	21	20	19	18	17	16	15	14	13	12	11	10	9	8	7	6	5	4	3	2	1			
24	23	22	21	20	19	18	17	16	15	14	13	12	11	10	9	8	7	6	5	4	3	2	1		
25	24	23	22	21	20	19	18	17	16	15	14	13	12	11	10	9	8	7	6	5	4	3	2	1	
26	25	24	23	22	21	20	19	18	17	16	15	14	13	12	11	10	9	8	7	6	5	4	3	2	1

Geology by N.H. Darton.  
Surveyed in 1910-1913.