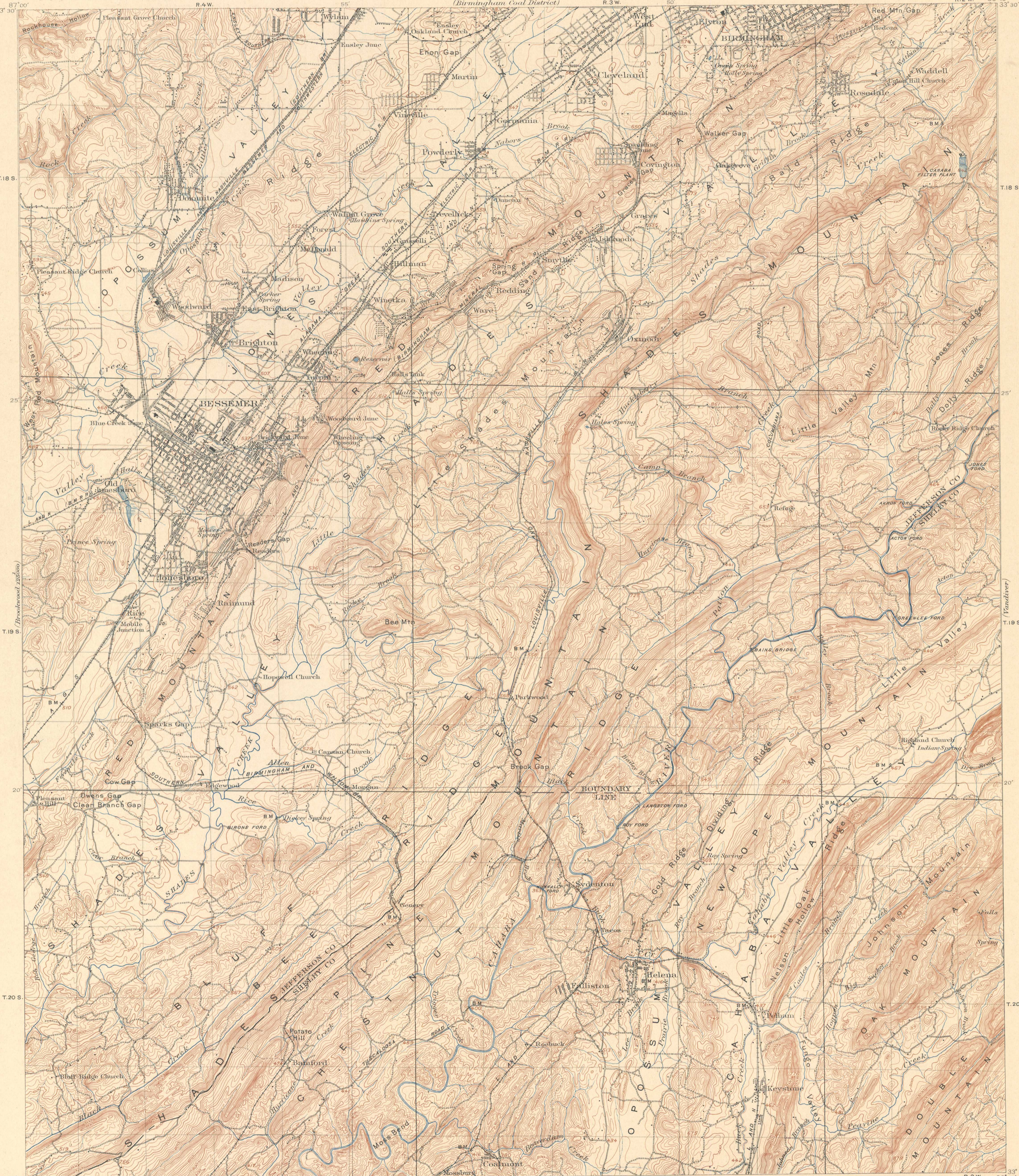


(Birmingham Coal District)



EXPLANATION

- RELIEF printed in brown
- Altitude above mean sea level instrumentally determined
- Contours showing height above sea, horizontal form, and steepness of slope of the surface
- Depression contours
- DRAINAGE printed in blue
- Streams
- Intermittent stream
- Reservoir or pond
- Spring
- Marsh
- CULTURE printed in black
- Roads and buildings
- Church or schoolhouse and cemetery
- Private or poor roads
- Trail
- Railroad
- Electric railroad
- Bridge
- Coke ovens
- U. S. township and section lines
- County line
- City, village, or borough line
- Bench mark giving precise altitude

H.M. Wilson, Geographer;
H.B. Blair, in charge of section.
Topography by H.B. Blair; Assistants, R.L. Harrison
and Carroll Caldwell.
Control by C.B. Kendall.
Surveyed in 1905.

APPROXIMATE MEAN
MAGNETIC NORTH
DECLINATION 1926.

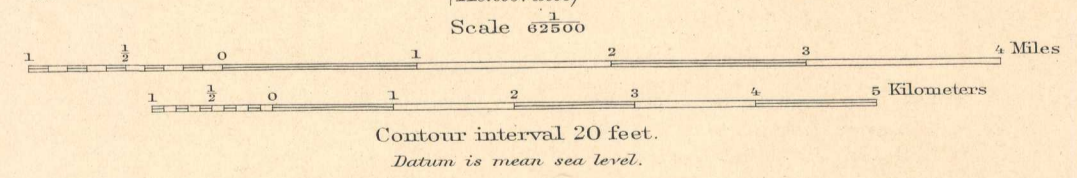


DIAGRAM OF TOWNSHIP

16	5	4	3	2	1
7	6	5	4	3	2
18	17	16	15	14	13
29	28	27	26	25	24
30	29	28	27	26	25
31	30	29	28	27	26

Edition of April 1907, reprinted June 1927