



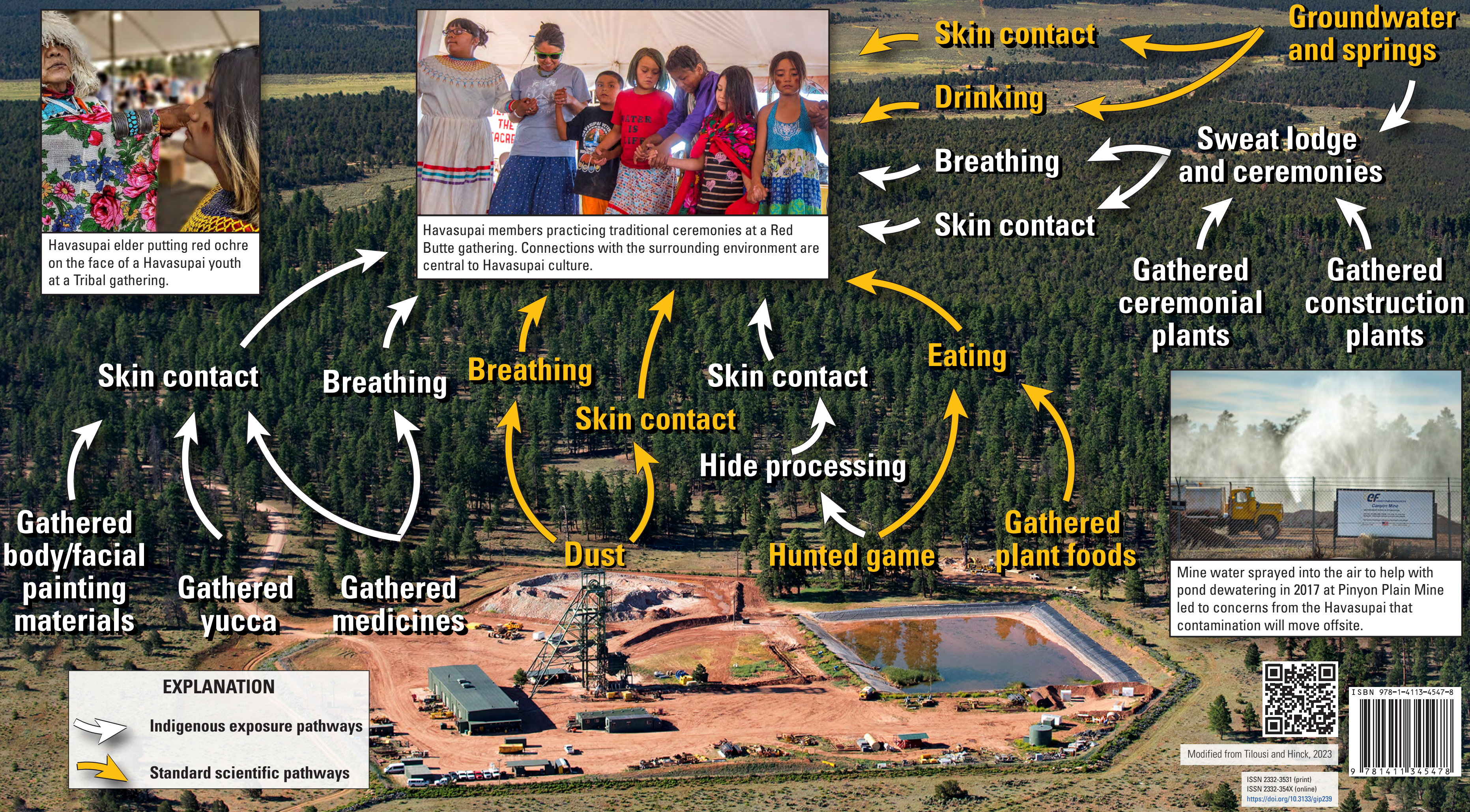
Contaminant Exposure Framework – Havasupai Perspective



Havasupai elder putting red ochre on the face of a Havasupai youth at a Tribal gathering.

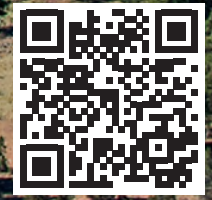


Havasupai members practicing traditional ceremonies at a Red Butte gathering. Connections with the surrounding environment are central to Havasupai culture.



Mine water sprayed into the air to help with pond dewatering in 2017 at Pinyon Plain Mine led to concerns from the Havasupai that contamination will move offsite.

EXPLANATION
 Indigenous exposure pathways
 Standard scientific pathways



Modified from Tiloussi and Hinck, 2023

ISSN 2332-3531 (print)
 ISSN 2332-354X (online)
<https://doi.org/10.3133/gip239>