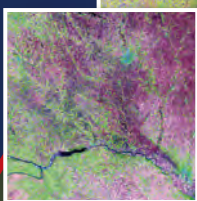
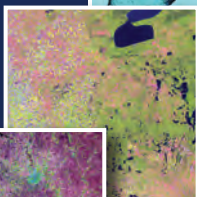


EarthNow!

EarthNow! displays live or recent acquisitions from the Landsat 5 and Landsat 7 satellites as they pass over North America. When these satellites pass within range of the U.S. Geological Survey (USGS) Earth Resources Observation and Science (EROS) Center, data imagery is downloaded and displayed in near-real time. When the satellites are out of range of the South Dakota ground station at the EROS Center, recent acquisitions are displayed.





EarthNow! was created by the USGS AmericaView and Landsat Programs primarily as an outreach tool for K-16 educators. However, it can be used by anyone with an interest in how satellite images reveal changes on the Earth's surface over time. Since the launch of Landsat 1 in 1972, Landsat satellites have been continuously monitoring the Earth's land areas and coastlines from over 400 miles above the surface. The millions of images they have captured—and continue to capture—are archived at the USGS EROS Center and represent an unparalleled, long-term record of global change. Both recent and historical Landsat images can be explored at <http://glovis.usgs.gov> and <http://earthexplorer.cr.usgs.gov>.

See EarthNow! at <http://earthnow.usgs.gov>.

For more information please contact:

U.S. Geological Survey
Earth Resources Observation
and Science (EROS) Center
47914 252nd Street
Sioux Falls, SD 57198-0001

Toll Free: 800-252-4547
Telephone: 605-594-6151
Fax: 605-594-6589
E-mail: custserv@usgs.gov
Web site: <http://eros.usgs.gov>

<http://earthnow.usgs.gov>