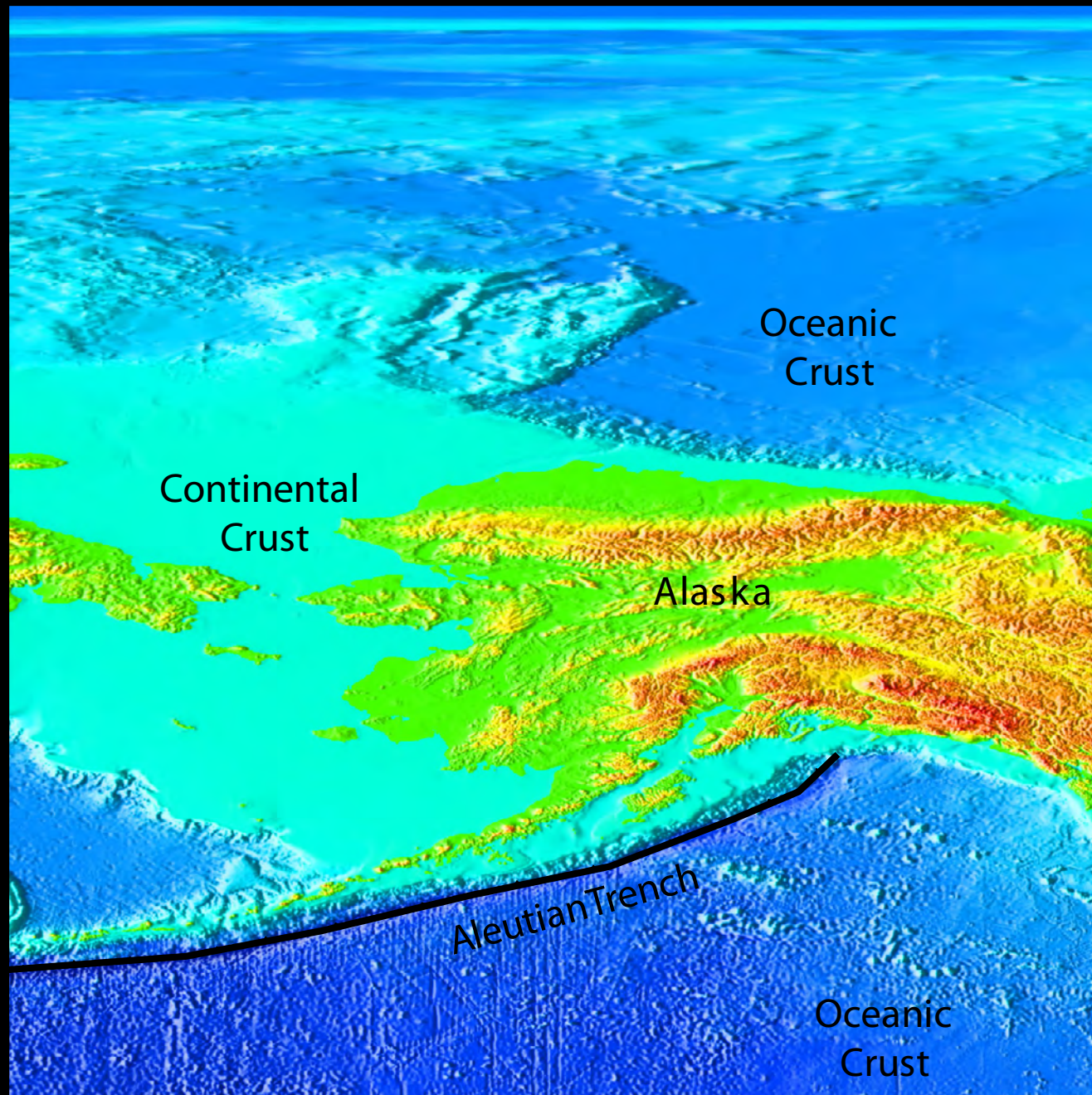
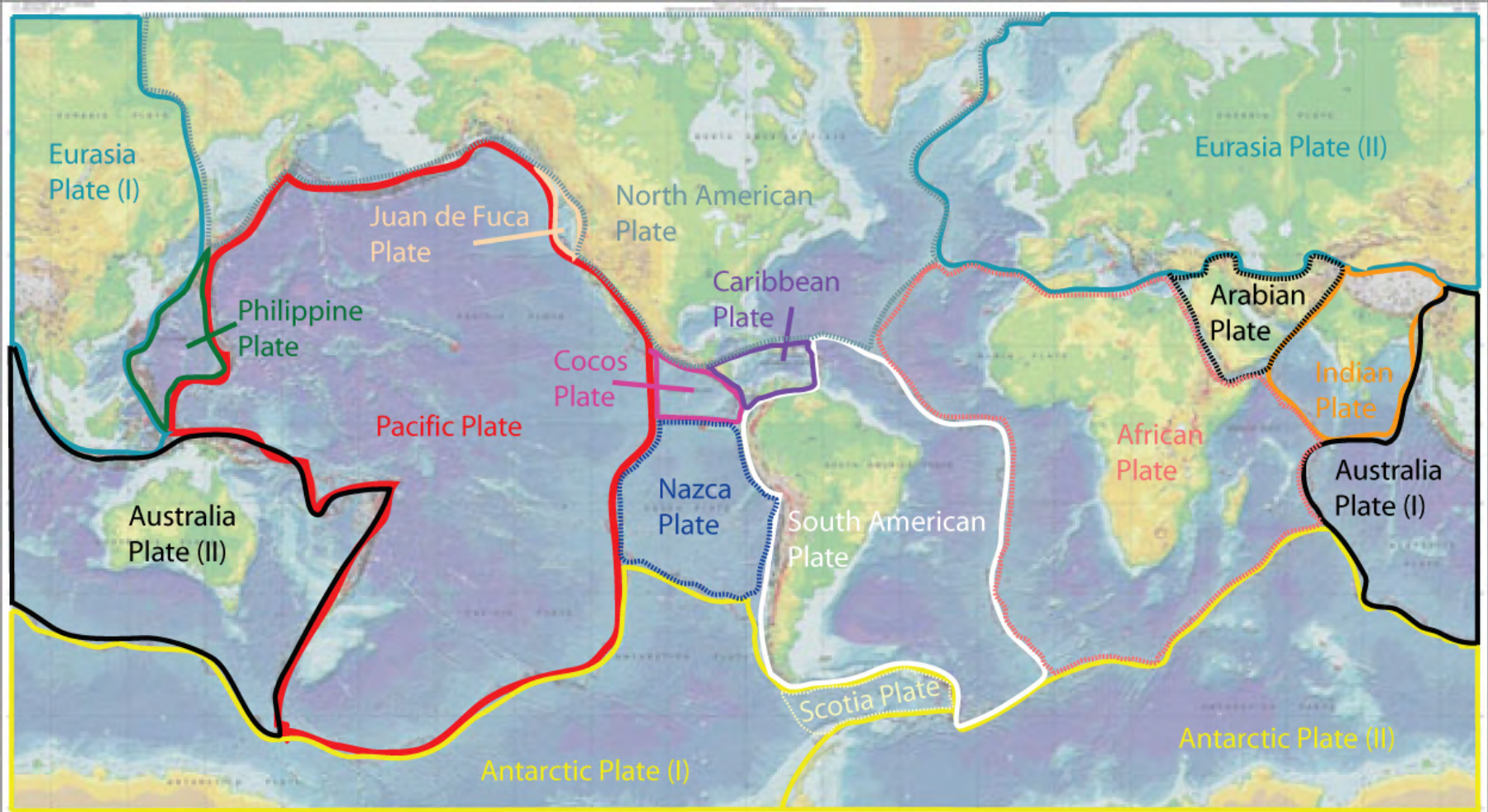
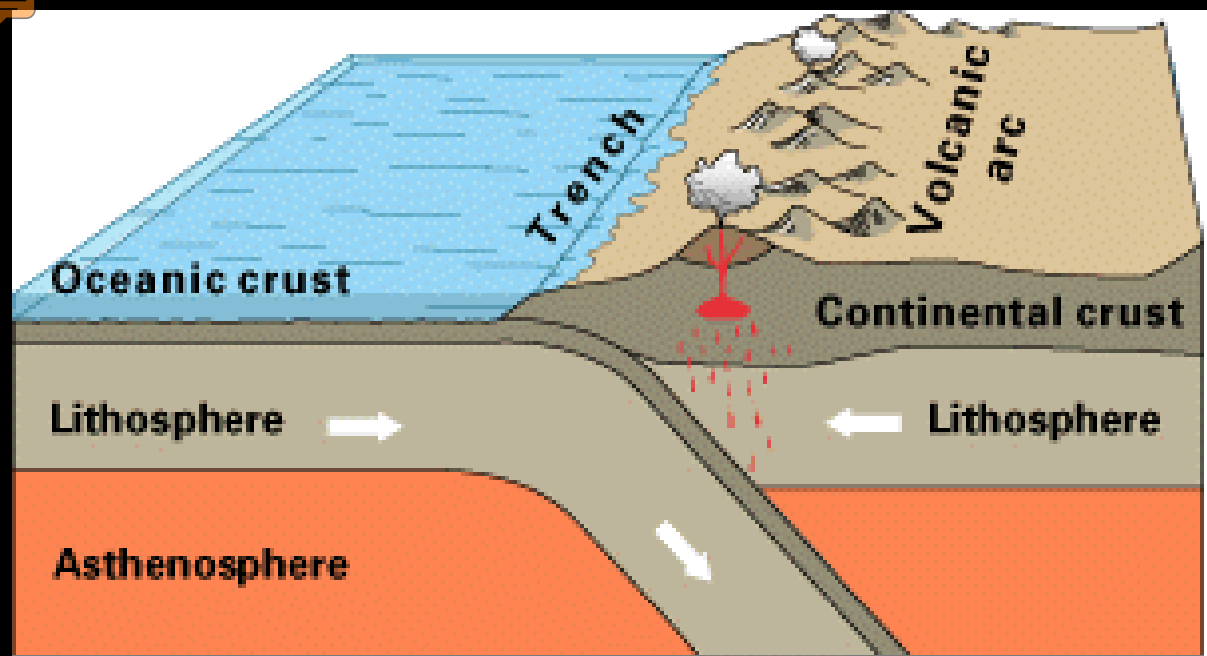




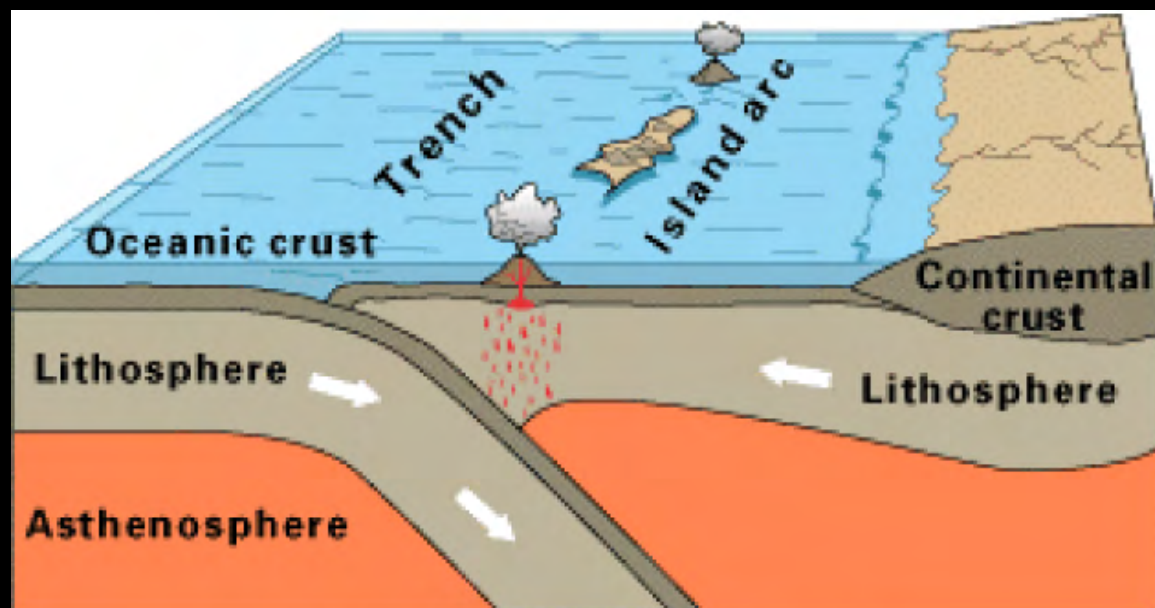
Plate Tectonics Mapping



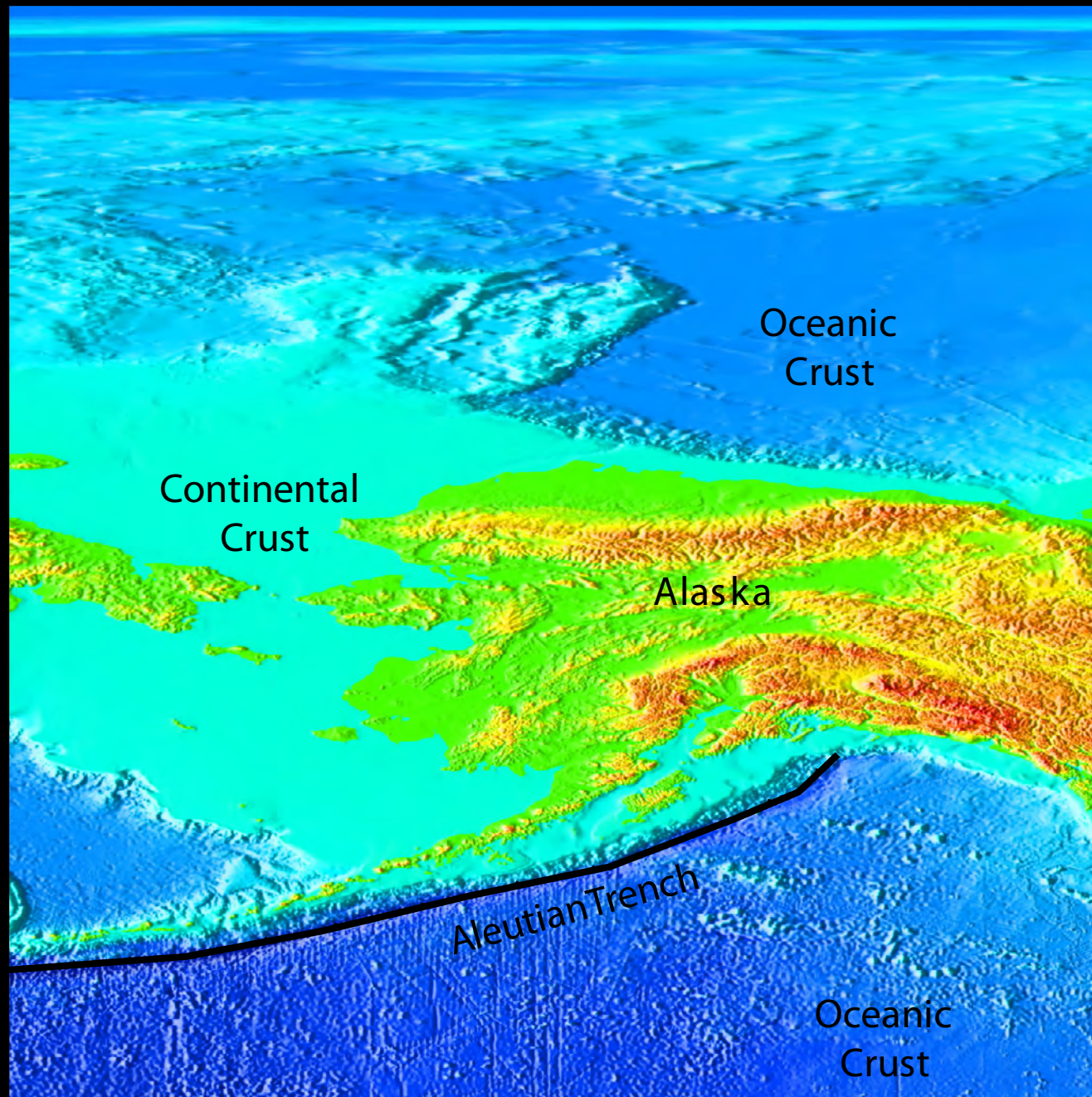




Oceanic-continental convergence

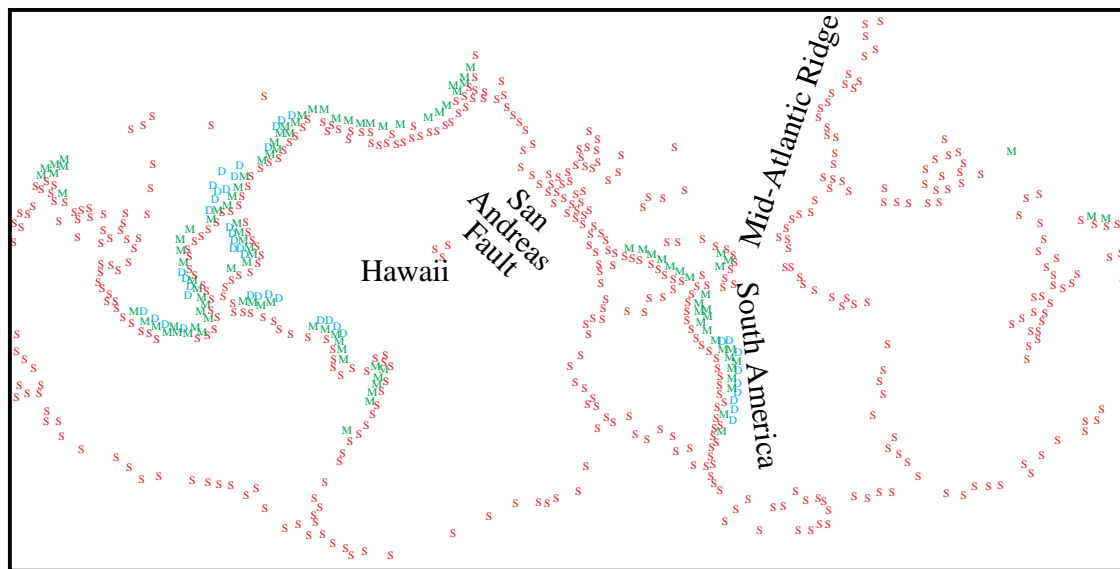


Oceanic-oceanic convergence

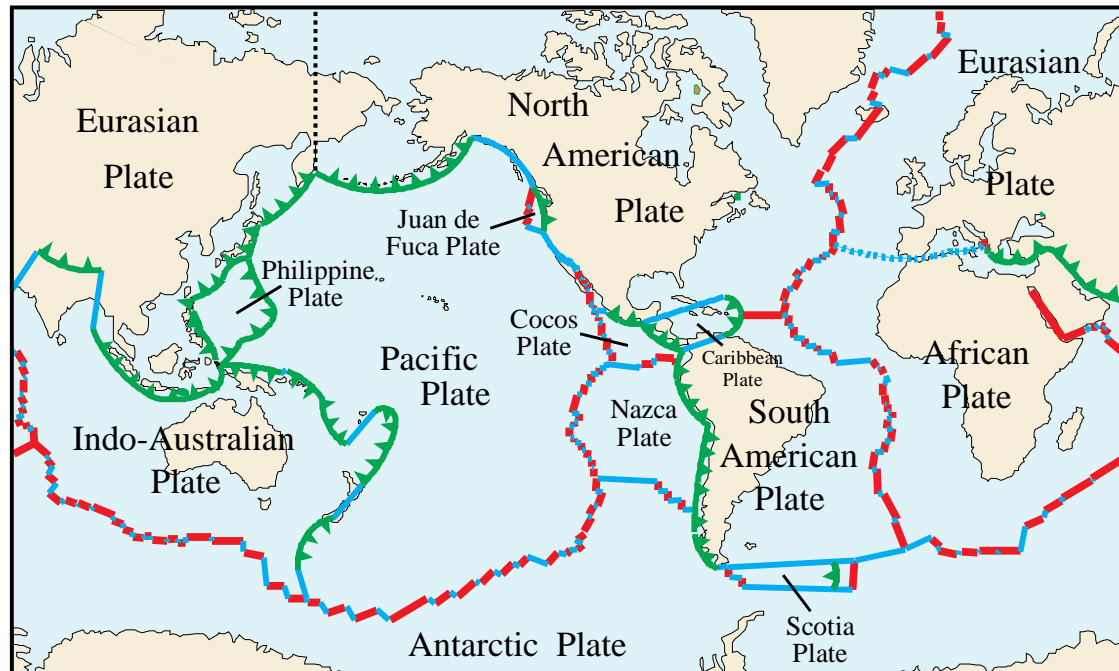




Earthquake Mapping



S = Shallow (< 40 miles) **M = Intermediate (40 - 200 miles)** **D = Deep (> 200 miles)**



Divergent **Convergent** **"Teeth" on Overriding Plate** **Transform**

