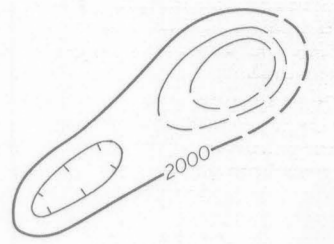


EXPLANATION



Magnetic contours

Showing total intensity magnetic field of the earth in gammas relative to arbitrary datum; hachures indicate closed area of lower magnetic intensity; dashed where data are incomplete

X 2016

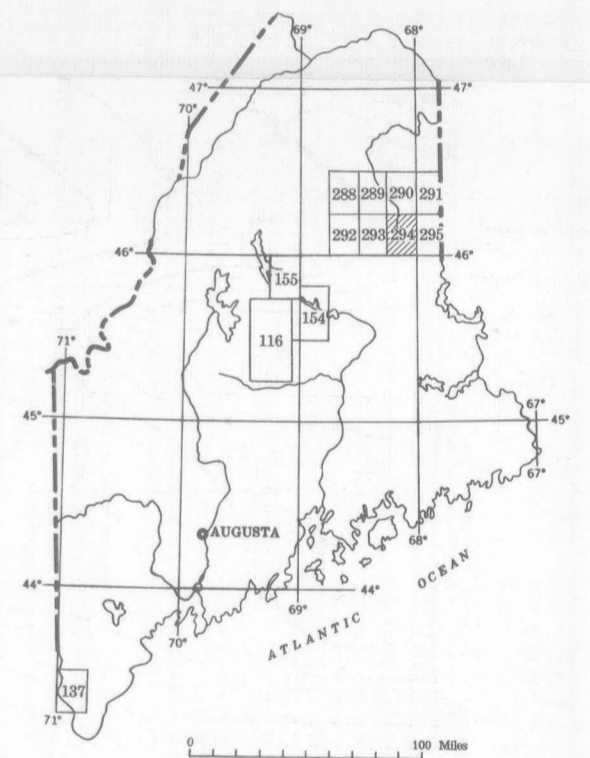
Measured maximum or minimum intensity within closed magnetic high or closed magnetic low

Flight path

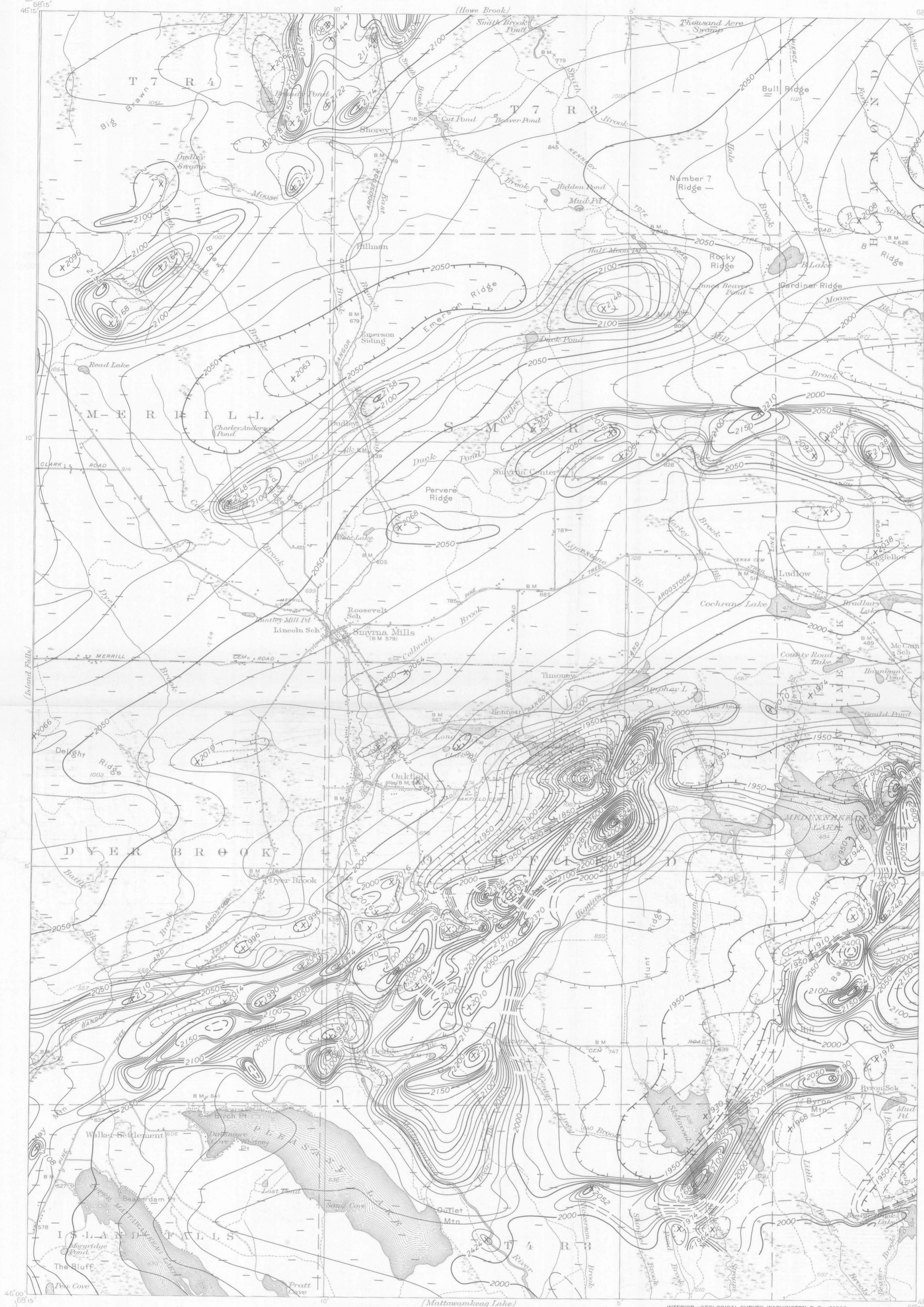
Showing location and spacing of data

NOTE

Aeromagnetic data are obtained and compiled along a continuous line, whereas ground magnetic surveys are made at separate points. Errors within the normal limits of any magnetic measurement may cause slight discrepancies between flight lines in an aeromagnetic map, which would be more obvious than similar discrepancies between points in a ground magnetic map. For this reason as much care should be exercised in evaluating magnetic features that appear as elongations along a single aeromagnetic traverse as in interpreting an anomaly indicated by a single ground station



INDEX MAP OF MAINE SHOWING LOCATION OF THIS AREA AND OTHER AEROMAGNETIC MAPS PUBLISHED BY THE U. S. GEOLOGICAL SURVEY



Base map from U. S. Geological Survey topographic quadrangle map



AEROMAGNETIC MAP OF THE SMYRNA MILLS  
QUADRANGLE, AROOSTOOK COUNTY, MAINE

By

W. J. Dempsey

SCALE 1:62 500



CONTOUR INTERVALS 10, 50, AND 200 GAMMAS

1962

Aeromagnetic survey flown at 500 feet above ground surface by W. J. Dempsey and J. R. Balsley, 1951 and R. W. Bromery, 1958  
Compilation prepared by F. P. Gilbert