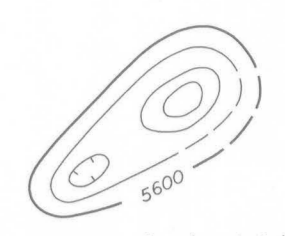


(CANBURY)

(SOUTHBRURY)



EXPLANATION

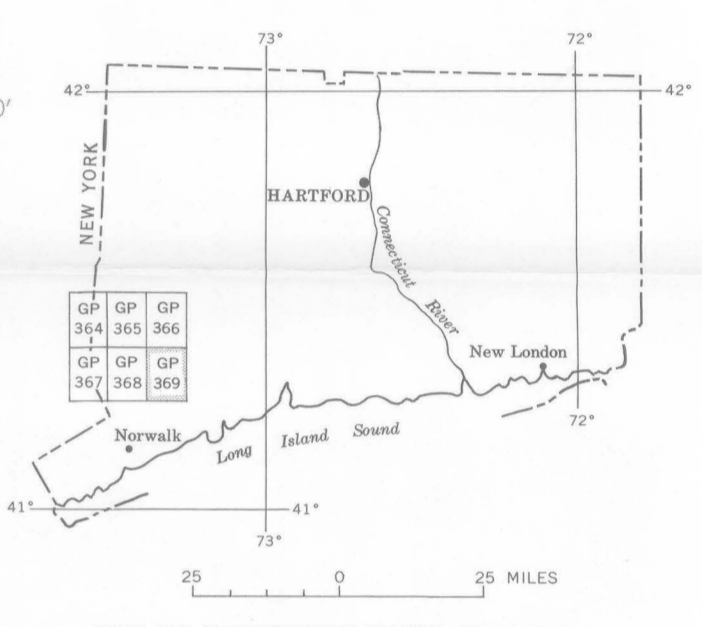


Magnetic contours showing total intensity magnetic field of the earth in gammas relative to arbitrary datum.
Hachured to indicate closed areas of lower magnetic intensity; dashed where data are incomplete.

Measured maximum or minimum intensity within closed high or closed low.



NOTE
Aeromagnetic data are obtained and compiled along a continuous line, whereas ground magnetic surveys are made at separate points. Errors within the normal limits of any magnetic measurement may cause slight discrepancies between flight lines in an aeromagnetic map, which would be more obvious than similar discrepancies between points in a ground magnetic map. For this reason as much care should be exercised in evaluating magnetic features that appear as elongations along a single aeromagnetic traverse as in interpreting an anomaly indicated by a single ground station.



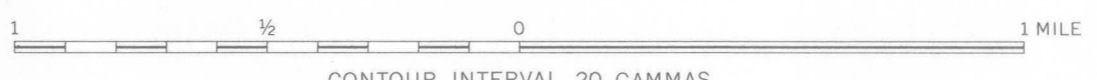
INDEX MAP OF CONNECTICUT SHOWING AEROMAGNETIC MAPS PUBLISHED BY THE U.S. GEOLOGICAL SURVEY

Base map by Topographic Division
U. S. Geological Survey, 1959

**AEROMAGNETIC MAP OF THE BOTSFORD QUADRANGLE
FAIRFIELD COUNTY, CONNECTICUT**

By
Peter Popenoe, G. E. Andreasen, and J. R. Kirby

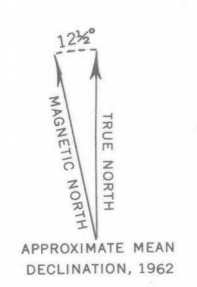
SCALE 1:24 000



CONTOUR INTERVAL 20 GAMMAS

1962

Aeromagnetic survey flown 500 feet
above ground, 1958, 1959, and 1960



APPROXIMATE MEAN
DECLINATION, 1962

(NORWALK NORTH)

(BRIDGEPORT)