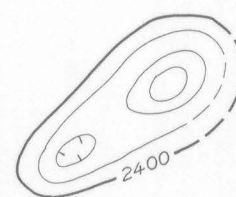


EXPLANATION



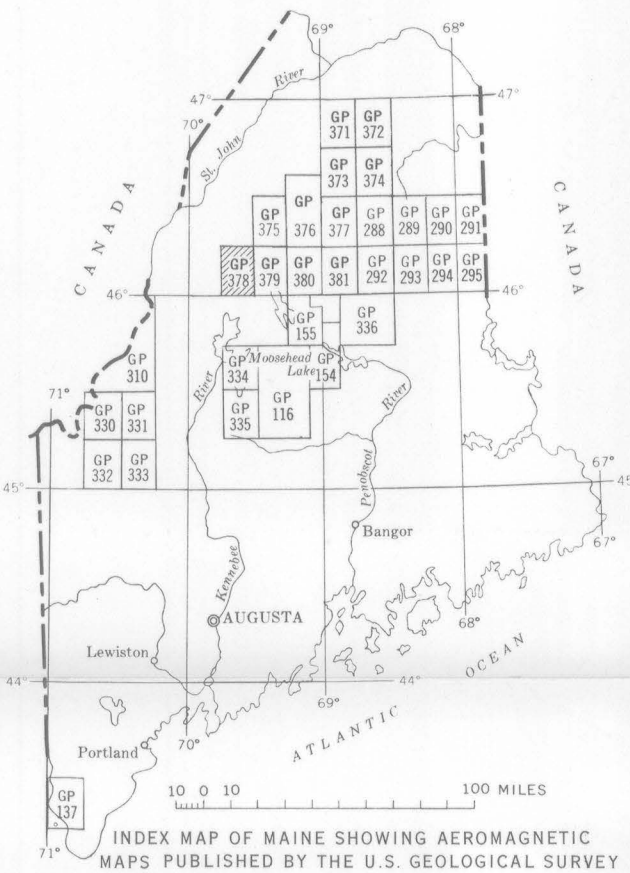
Magnetic contours showing total intensity magnetic field of the earth in gammas relative to arbitrary datum
Hachured to indicate closed areas of lower magnetic intensity; dashed where data are incomplete

Measured maximum or minimum intensity within closed high or closed low

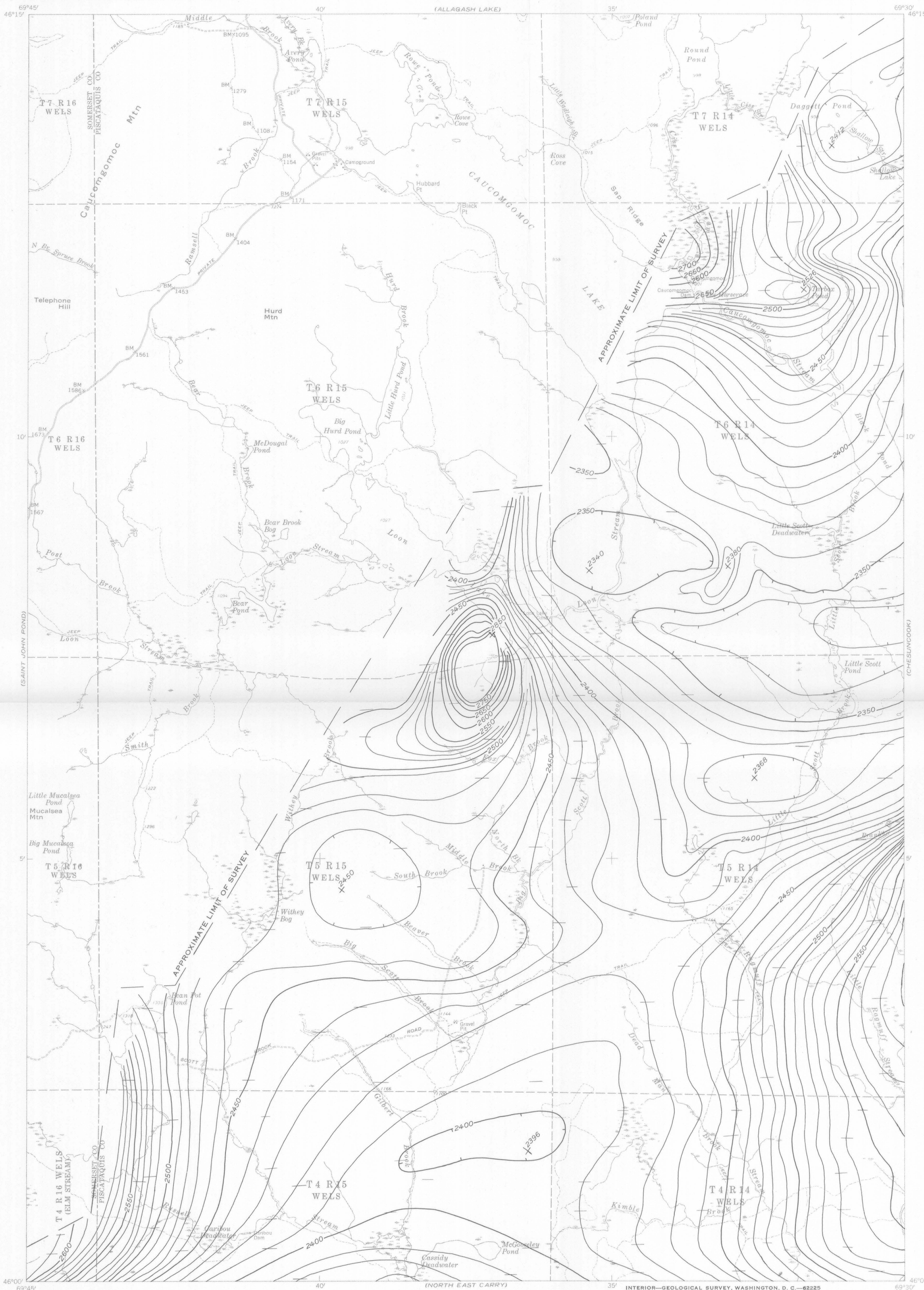
Flight path
Showing location and spacing of data

NOTE

Aeromagnetic data are obtained and compiled along a continuous line, whereas ground magnetic surveys are made at separate points. Errors within the normal limits of any magnetic measurement may cause slight discrepancies between flight lines in an aeromagnetic map, which would be more obvious than similar discrepancies between points in a ground magnetic map. For this reason as much care should be exercised in evaluating magnetic features that appear as elongations along a single aeromagnetic traverse as in interpreting an anomaly indicated by a single ground station



INDEX MAP OF MAINE SHOWING AEROMAGNETIC MAPS PUBLISHED BY THE U.S. GEOLOGICAL SURVEY

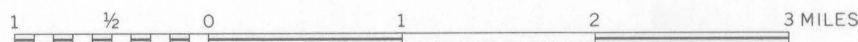


Base map from U.S. Geological Survey
topographic quadrangle map

AEROMAGNETIC MAP OF PART OF THE CAUCOMGOMOC LAKE QUADRANGLE
SOMERSET AND PISCATAQUIS COUNTIES, MAINE

By
R. W. Bromery, N. S. Tyson, and others

SCALE 1:62 500



CONTOUR INTERVALS 10 AND 50 GAMMAS
1963

GEOPHYSICAL INVESTIGATIONS
MAP GP-378

For sale by U.S. Geological Survey, price 50 cents