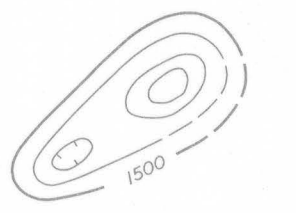


EXPLANATION



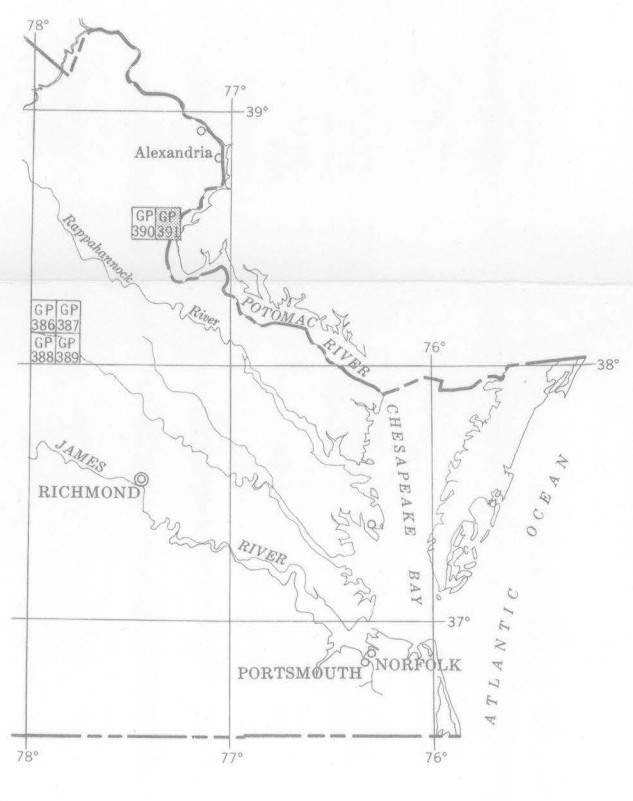
Magnetic contours showing total intensity magnetic field of the earth in gammas relative to arbitrary datum  
Hatched to indicate closed areas of lower magnetic intensity; dashed where data are incomplete

Measured maximum or minimum intensity within closed high or closed low

Flight path  
Showing location and spacing of data

NOTE

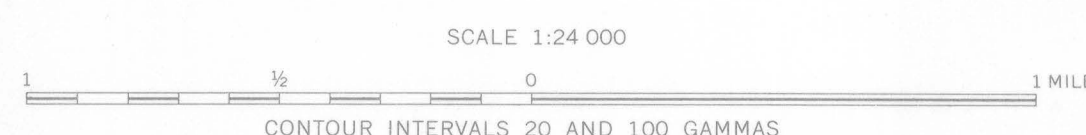
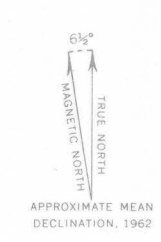
Aeromagnetic data are obtained and compiled along a continuous line, whereas ground magnetic surveys are made at separate points. Errors within the normal limits of any magnetic measurement may cause slight discrepancies between flight lines in an aeromagnetic map, which would be more obvious than similar discrepancies between points in a ground magnetic map. For this reason as much care should be exercised in evaluating magnetic features that appear as elongations along a single aeromagnetic traverse as in interpreting an anomaly indicated by a single ground station.



INDEX MAP OF EASTERN VIRGINIA SHOWING AEROMAGNETIC MAPS PUBLISHED BY THE U.S. GEOLOGICAL SURVEY

AEROMAGNETIC MAP OF THE QUANTICO QUADRANGLE, PRINCE WILLIAM AND STAFFORD COUNTIES, VIRGINIA

By  
R. W. Bromery, G. A. Galat, and E. J. Chandler



1963

Base map from Army Map Service topographic quadrangle map

INTERIOR-GEOLOGICAL SURVEY, WASHINGTON, D.C. - 62238

Aeromagnetic survey flown at 500 feet above ground, 1960