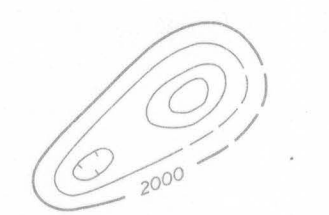


EXPLANATION



Magnetic contours showing total intensity magnetic field of the earth in gammas relative to arbitrary datum
Hatched to indicate closed areas of lower magnetic intensity, dashed where data are incomplete

Measured maximum or minimum intensity within closed high or closed low

Flight path
Showing location and spacing of data

NOTE

Aeromagnetic data are obtained and compiled along a continuous line, whereas ground magnetic surveys are made at separate points. Errors within the normal limits of any magnetic measurement may cause slight discrepancies between flight lines in an aeromagnetic map, which would be more obvious than similar discrepancies between points in a ground magnetic map. For this reason as much care should be exercised in evaluating magnetic features that appear as elongations along a single aeromagnetic traverse as in interpreting an anomaly indicated by a single ground station.



INDEX MAP OF MARYLAND, DELAWARE, AND DISTRICT OF COLUMBIA SHOWING AREA OF AEROMAGNETIC SURVEYS



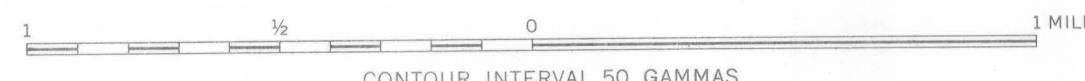
20 0 20 40 60 MILES

AEROMAGNETIC SURVEY AREA
SHOWING LOCATION OF THIS REPORT

**AEROMAGNETIC MAP OF THE SENECA AND PART OF THE STERLING
QUADRANGLES, MONTGOMERY COUNTY, MARYLAND,
AND LOUDOUN AND FAIRFAX COUNTIES, VIRGINIA**

By
Jean Blanchett, N. S. Tyson, and E. F. McGowan

SCALE 1:24 000



1963