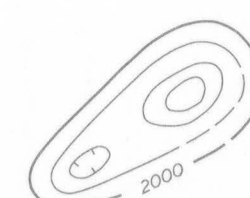




EXPLANATION



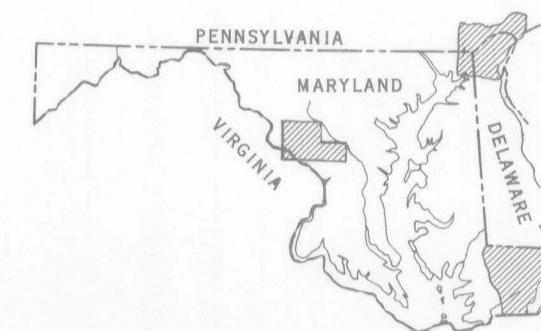
Magnetic contours showing total intensity magnetic field of the earth in gammas relative to arbitrary datum  
Hatched to indicate closed areas of lower magnetic intensity; dashed where data are incomplete

Measured maximum or minimum intensity within closed high or closed low

Flight path  
Showing location and spacing of data

NOTE

Aeromagnetic data are obtained and compiled along a continuous line, whereas ground magnetic surveys are made of separate points. Errors within the normal limits of any magnetic measurement may cause slight discrepancies between flight lines in an aeromagnetic map, which would be more obvious than similar discrepancies between points in a ground magnetic map. For this reason as much care should be exercised in evaluating magnetic features that appear as elongations along a single aeromagnetic traverse as in interpreting an anomaly indicated by a single ground station



INDEX MAP OF MARYLAND, DELAWARE, AND DISTRICT OF COLUMBIA SHOWING AREA OF AEROMAGNETIC SURVEY



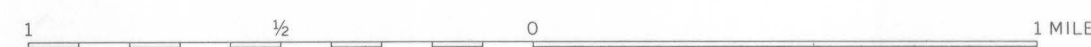
AEROMAGNETIC SURVEY AREA  
SHOWING LOCATION OF THIS REPORT

Base map from Topographic Division  
U.S. Geological Survey, 1956

**AEROMAGNETIC MAP OF THE ROCKVILLE QUADRANGLE, MONTGOMERY COUNTY, MARYLAND AND FAIRFAX COUNTY, VIRGINIA**

By  
**Jean Blanchett, N. S. Tyson, and E. F. McGowan**

SCALE 1:24 000



Aeromagnetic survey flown 500 feet above ground, 1958

