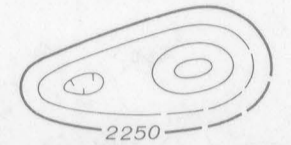


EXPLANATION



Magnetic contours

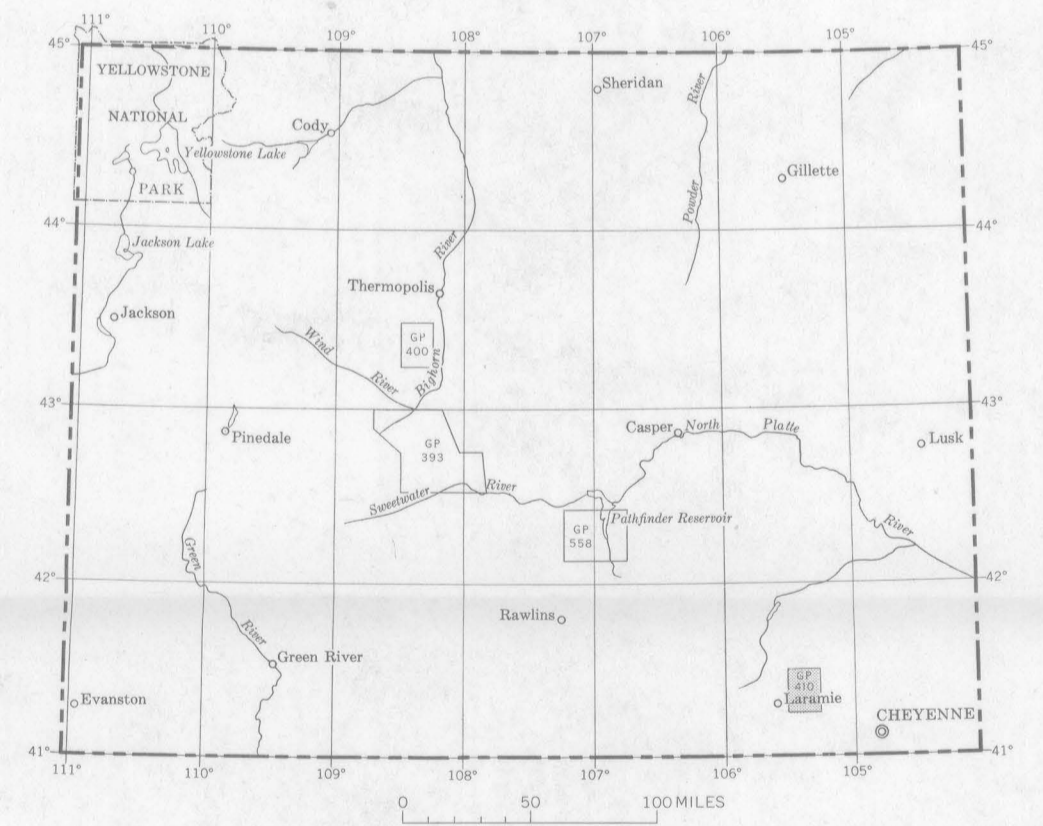
Showing total intensity magnetic field of the earth in gammas relative to arbitrary datum. Hachured to indicate closed areas of lower magnetic intensity. Dashed where data are incomplete. Contour intervals 50 and 250 gammas



Location of measured maximum or minimum intensity within closed high or closed low

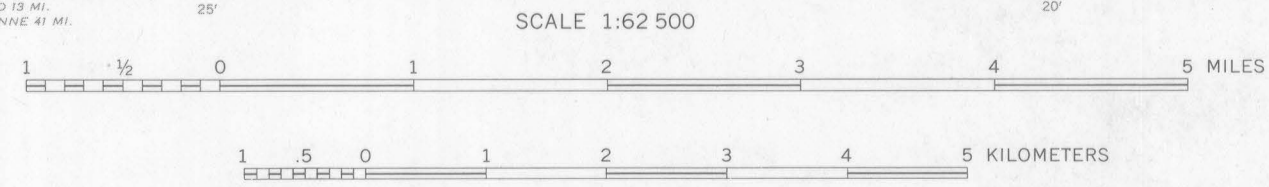
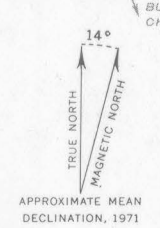
Flight path

Showing location and spacing of data



INDEX MAP OF WYOMING SHOWING LOCATION OF U.S. GEOLOGICAL SURVEY AEROMAGNETIC GEOPHYSICAL INVESTIGATIONS MAPS. AREA OF GP-410 SHADED

Base by U.S. Geological Survey, 1948



Aeromagnetic survey flown and compiled by the U.S. Geological Survey. Flown at 1,000 feet above ground, 1948

AEROMAGNETIC MAP OF PART OF THE RAGGED TOP MOUNTAIN QUADRANGLE,
ALBANY AND LARAMIE COUNTIES, WYOMING