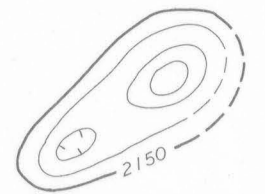
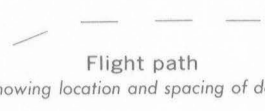


EXPLANATION



Magnetic contours showing total intensity magnetic field of the earth in gammas relative to arbitrary datum
Hatched to indicate closed areas of lower magnetic intensity; dashed where data are incomplete

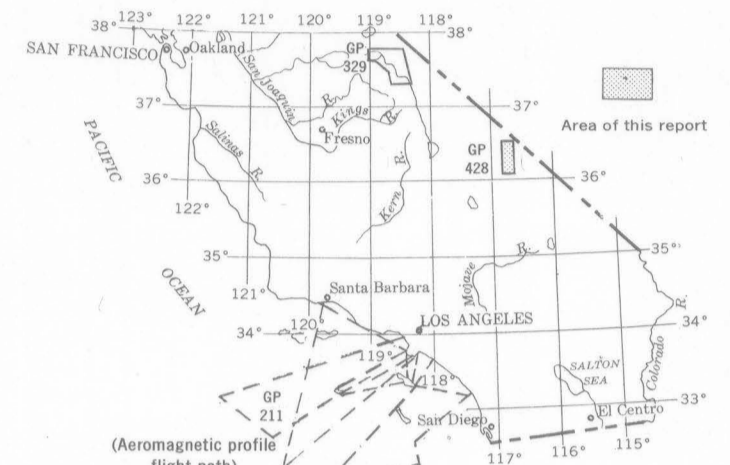
Measured maximum or minimum intensity within closed high or closed low



Flight path
Showing location and spacing of data

NOTE

Aeromagnetic data are obtained and compiled along a continuous line, whereas ground magnetic surveys are made at separate points. Errors within the normal limits of any magnetic measurement may cause slight discrepancies between flight lines in an aeromagnetic map, which would be more obvious than similar discrepancies between points in a ground magnetic map. For this reason as much care should be exercised in evaluating magnetic features that appear as elongations along a single aeromagnetic traverse as in interpreting an anomaly indicated by a single ground station



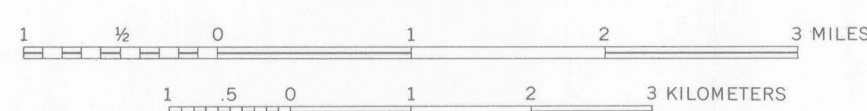
INDEX MAP OF THE SOUTHERN PART OF CALIFORNIA SHOWING AEROMAGNETIC MAPS PUBLISHED BY THE U.S. GEOLOGICAL SURVEY

Base map modified from quadrangle maps by the Topographic Division, U.S. Geological Survey including parts of the following quadrangles: Ryan, 1952; Furnace Creek, 1952; Bennetts Well, 1952; and Funeral Peak, 1950

**AEROMAGNETIC MAP OF THE EAST-CENTRAL PART OF THE
DEATH VALLEY NATIONAL MONUMENT, INYO COUNTY, CALIFORNIA**

By
G. E. Andreasen and F. A. Petrafeso

SCALE 1:62 500



CONTOUR INTERVAL 10 GAMMAS

1963