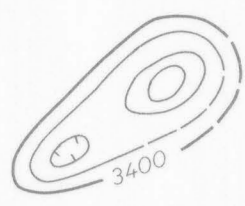


EXPLANATION

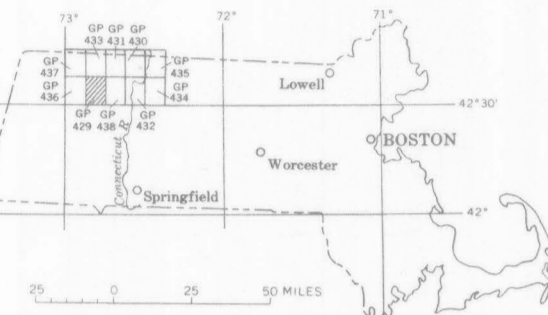


Magnetic contours showing total intensity magnetic field of the earth in gammas relative to arbitrary datum  
Hachures to indicate closed areas of lower magnetic intensity; dashed where data are incomplete

Measured maximum or minimum intensity within closed high or closed low



NOTE  
Aeromagnetic data are obtained and compiled along a continuous line, whereas ground magnetic surveys are made at separate points. Errors within the normal limits of any magnetic measurement may cause slight discrepancies between flight lines in an aeromagnetic map, which would be more obvious than similar discrepancies between points in a ground magnetic map. For this reason as much care should be exercised in evaluating magnetic features that appear as elongations along a single aeromagnetic traverse as in interpreting an anomaly indicated by a single ground station



INDEX MAP OF MASSACHUSETTS SHOWING AEROMAGNETIC MAPS PUBLISHED BY THE U.S. GEOLOGICAL SURVEY. AREA OF GP-429 SHADED



Topographic base for GP-429 is Ashfield quadrangle, 1955

Aeromagnetic survey flown at 500 feet above ground 1959 and 1961

AEROMAGNETIC MAP OF THE ASHFIELD QUADRANGLE, FRANKLIN AND HAMPSHIRE COUNTIES, MASSACHUSETTS

By  
J. L. Meuschke and G. L. Zandle

