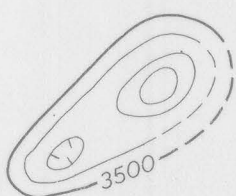


EXPLANATION



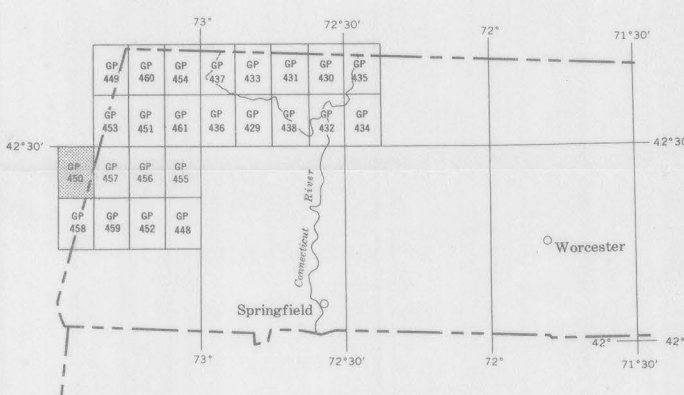
Magnetic contours showing total intensity magnetic field of the earth in gammas relative to arbitrary datum
Hachured to indicate closed areas of lower magnetic intensity; dashed where data are incomplete

Measured maximum or minimum intensity within closed high or closed low

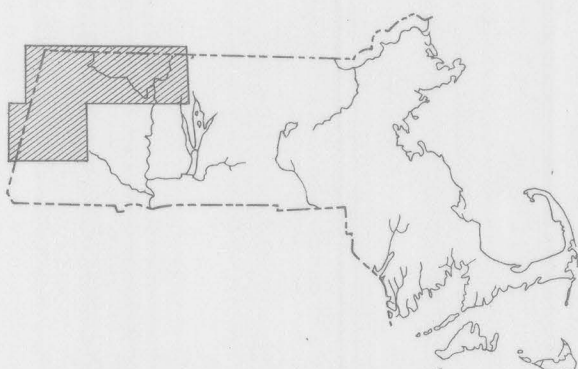
Flight path
Showing location and spacing of data

NOTE

Aeromagnetic data are obtained and compiled along a continuous line, whereas ground magnetic surveys are made at separate points. Errors within the normal limits of any magnetic measurement may cause slight discrepancies between flight lines in an aeromagnetic map, which would be more obvious than similar discrepancies between points in a ground magnetic map. For this reason as much care should be exercised in evaluating magnetic features that appear as elongations along a single aeromagnetic traverse as in interpreting an anomaly indicated by a single ground station



0 25 50 75 MILES
INDEX MAP OF WESTERN MASSACHUSETTS SHOWING
AEROMAGNETIC MAPS PUBLISHED BY THE U.S.
GEOLOGICAL SURVEY. AREA OF GP-450 SHADED



INDEX MAP OF MASSACHUSETTS SHOWING
AREA OF AEROMAGNETIC SURVEY



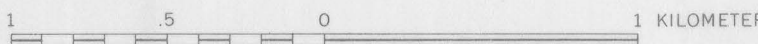
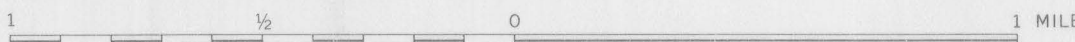
Topographic base for GP-450
is Canaan quadrangle, 1959

AEROMAGNETIC MAP OF PART OF THE CANAAN QUADRANGLE, BERKSHIRE COUNTY
MASSACHUSETTS, AND COLUMBIA AND RENSSELAER COUNTIES, NEW YORK

By

Peter Popenoe, G. R. Boynton, and G. L. Zandle

SCALE 1:24 000



CONTOUR INTERVAL 20 GAMMAS

1964

Aeromagnetic survey flown at 500 feet
above ground, 1959 and 1962

