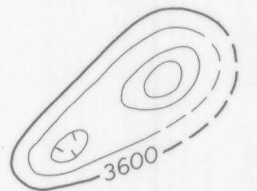




EXPLANATION



Magnetic contours showing total intensity magnetic field of the earth in gammas relative to arbitrary datum

Hachured to indicate closed areas of lower magnetic intensity; dashed where data are incomplete

+3788

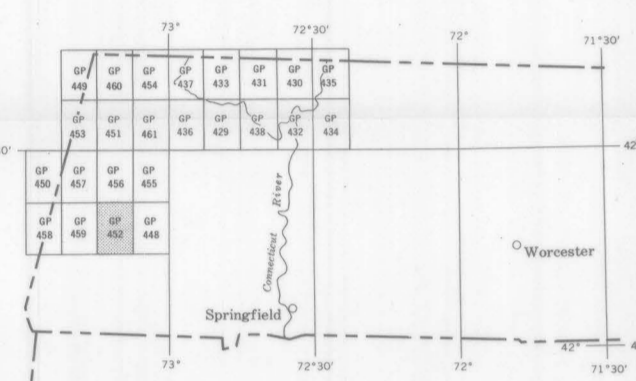
Measured maximum or minimum intensity within closed high or closed low

Flight path

Showing location and spacing of data

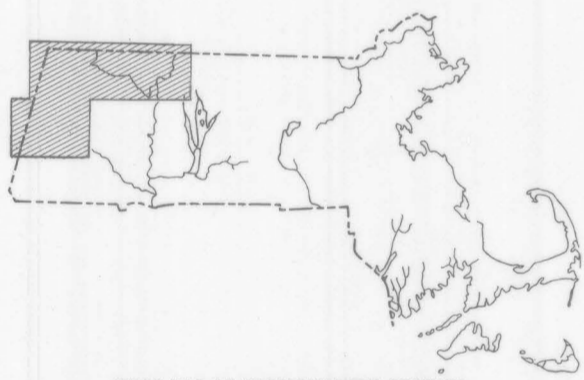
NOTE

Aeromagnetic data are obtained and compiled along a continuous line, whereas ground magnetic surveys are made at separate points. Errors within the normal limits of any magnetic measurement may cause slight discrepancies between flight lines in an aeromagnetic map, which would be more obvious than similar discrepancies between points in a ground magnetic map. For this reason as much care should be exercised in evaluating magnetic features that appear as elongations along a single aeromagnetic traverse as in interpreting an anomaly indicated by a single ground station



0 25 50 75 MILES

INDEX MAP OF WESTERN MASSACHUSETTS SHOWING AEROMAGNETIC MAPS PUBLISHED BY THE U.S. GEOLOGICAL SURVEY. AREA OF GP-452 SHADED



INDEX MAP OF MASSACHUSETTS SHOWING AREA OF AEROMAGNETIC SURVEY

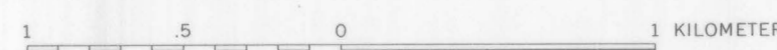
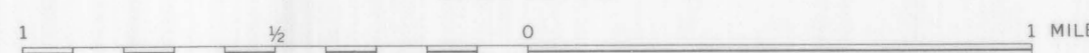
Topographic base for GP-452 is East Lee quadrangle, 1958

Aeromagnetic survey flown at 500 feet above ground, 1959 and 1962

AEROMAGNETIC MAP OF THE EAST LEE QUADRANGLE, BERKSHIRE COUNTY, MASSACHUSETTS

By
Peter Popenoe, G. R. Boynton, and G. L. Zandle

SCALE 1:24 000



CONTOUR INTERVALS 20 AND 100 GAMMAS

1964