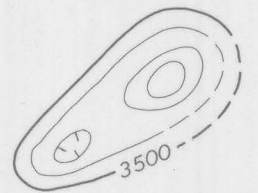


EXPLANATION



Magnetic contours showing total intensity magnetic field of the earth in gammas relative to arbitrary datum

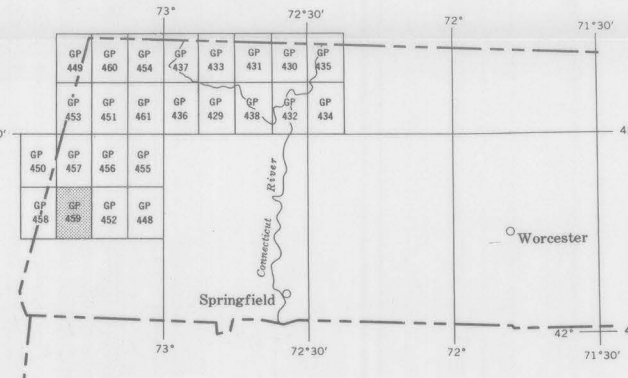
Hachured to indicate closed areas of lower magnetic intensity, dashed where data are incomplete

Measured maximum or minimum intensity within closed high or closed low

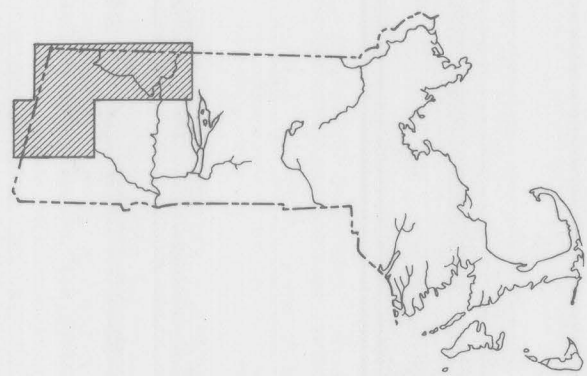
Flight path  
Showing location and spacing of data

NOTE

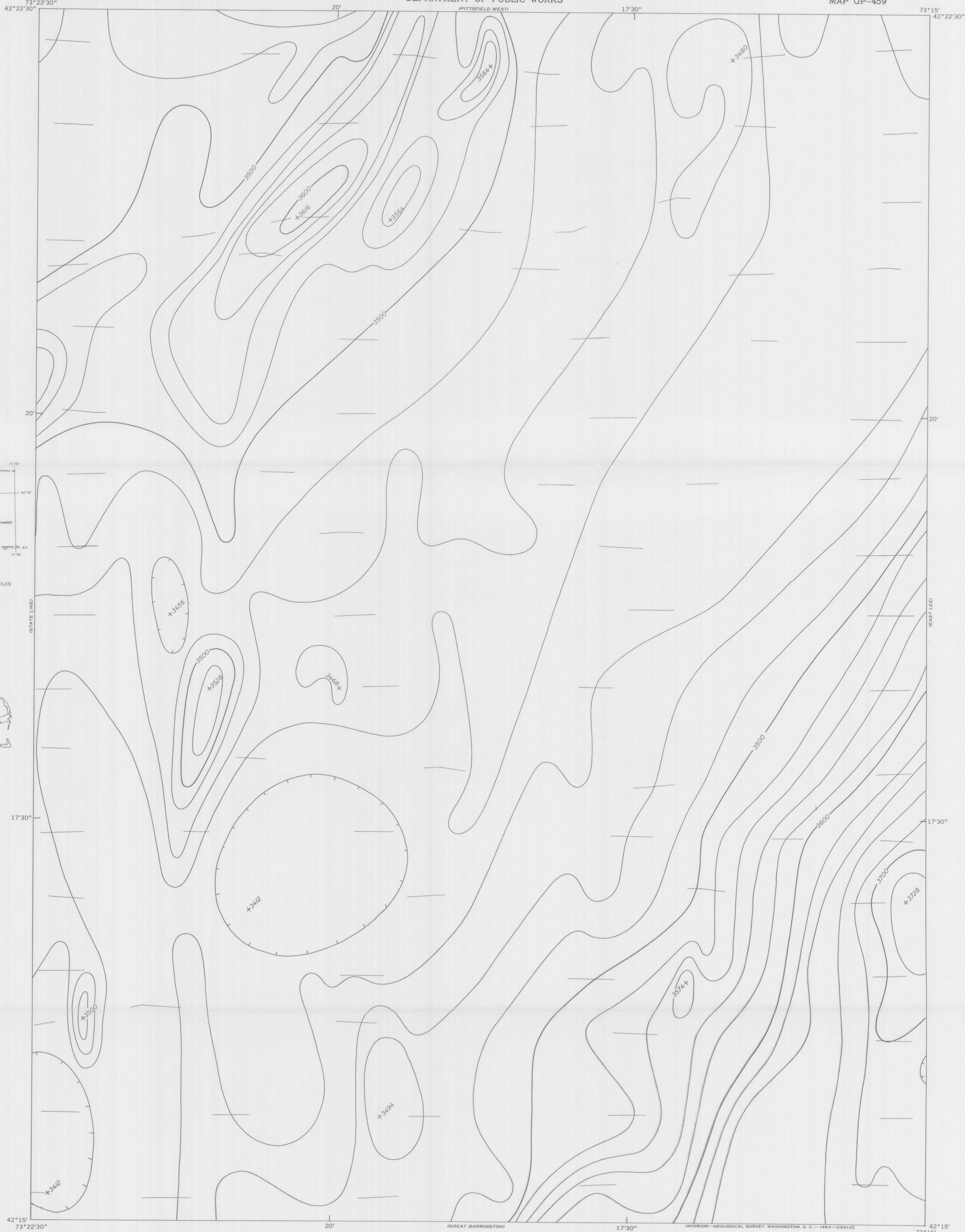
Aeromagnetic data are obtained and compiled along a continuous line, whereas ground magnetic surveys are made of separate points. Errors within the normal limits of any magnetic measurement may cause slight discrepancies between flight lines in an aeromagnetic map, which would be more obvious than similar discrepancies between points in a ground magnetic map. For this reason as much care should be exercised in evaluating magnetic features that appear as elongations along a single aeromagnetic traverse as in interpreting an anomaly indicated by a single ground station



INDEX MAP OF WESTERN MASSACHUSETTS SHOWING AEROMAGNETIC MAPS PUBLISHED BY THE U.S. GEOLOGICAL SURVEY. AREA OF GP-459 SHADED



INDEX MAP OF MASSACHUSETTS SHOWING AREA OF AEROMAGNETIC SURVEY

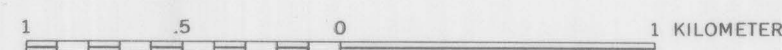
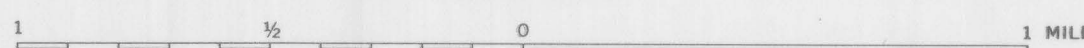


Topographic base for GP-459 is Stockbridge quadrangle, 1959

**AEROMAGNETIC MAP OF THE STOCKBRIDGE QUADRANGLE  
BERKSHIRE COUNTY, MASSACHUSETTS**

By  
**Peter Popenoe, G. R. Boynton, and G. L. Zandle**

SCALE 1:24 000



CONTOUR INTERVAL 20 GAMMAS

1964

Aeromagnetic survey flown at 500 feet above ground, 1959 and 1962