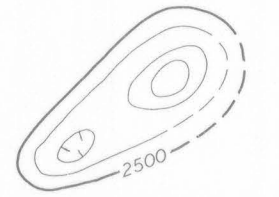


EXPLANATION



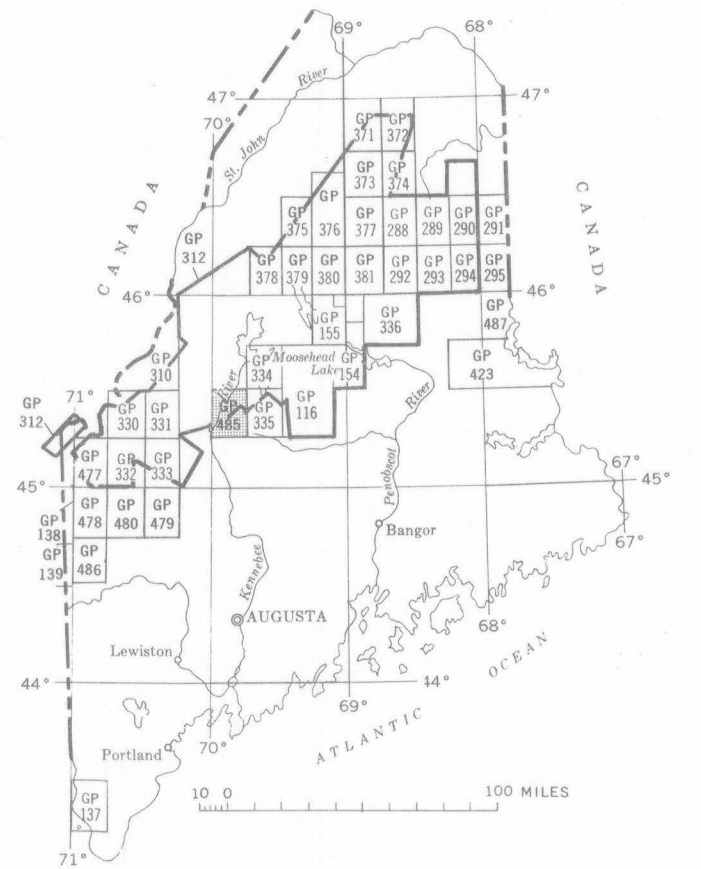
Magnetic contours showing total intensity magnetic field of the earth in gammas relative to arbitrary datum  
Hatched to indicate closed areas of lower magnetic intensity; dashed where data are incomplete

Location of measured maximum and minimum intensity within closed high or closed low

Flight path  
Showing location and spacing of data

NOTE

Aeromagnetic data are obtained and compiled along a continuous line, whereas ground magnetic surveys are made at separate points. Errors within the normal limits of any magnetic measurement may cause slight discrepancies between flight lines in an aeromagnetic map, which would be more obvious than similar discrepancies between points in a ground magnetic map. For this reason as much care should be exercised in evaluating magnetic features that appear as elongations along a single aeromagnetic traverse as in interpreting an anomaly indicated by a single ground station



INDEX MAP OF MAINE SHOWING AEROMAGNETIC MAPS PUBLISHED BY THE U.S. GEOLOGICAL SURVEY. AREA OF GP-485 SHADED

Base by U. S. Geological Survey, 1956

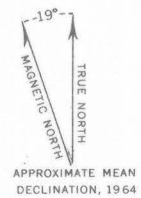
INTERIOR—GEOLOGICAL SURVEY, WASHINGTON, D. C.—1964—G64383

Aeromagnetic survey flown at 750 feet above ground, 1958

**AEROMAGNETIC MAP OF THE FORKS QUADRANGLE  
PISCATAQUIS AND SOMERSET COUNTIES, MAINE**

By  
**R. W. Bromery and N. W. Natof**

SCALE 1:62 500



CONTOUR INTERVALS 10 AND 50 GAMMAS