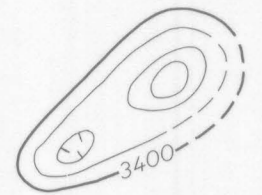


EXPLANATION

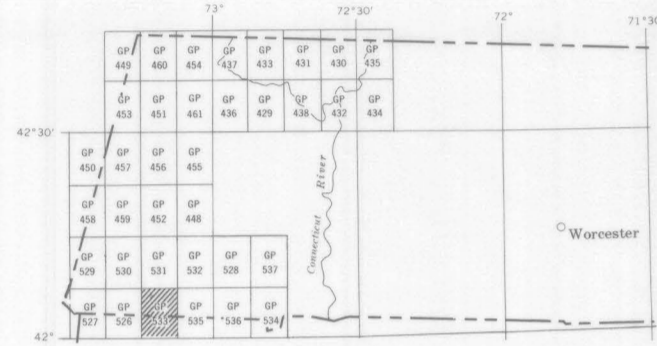


Magnetic contours
Showing total intensity magnetic field of the earth in gammas relative to arbitrary datum. Hachured to indicate closed areas of lower magnetic intensity; dashed where data are incomplete. Contour intervals are 20 and 100 gammas

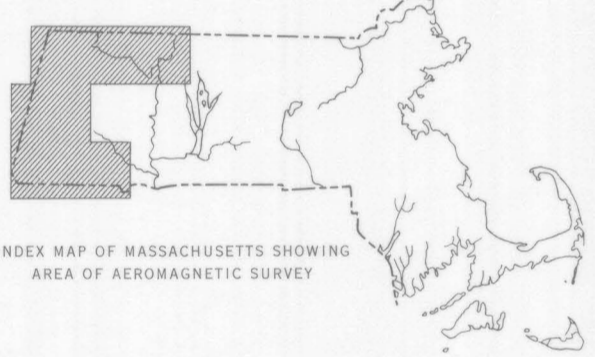
Measured maximum or minimum intensity
within closed high or closed low

Flight path
Showing location and spacing of data

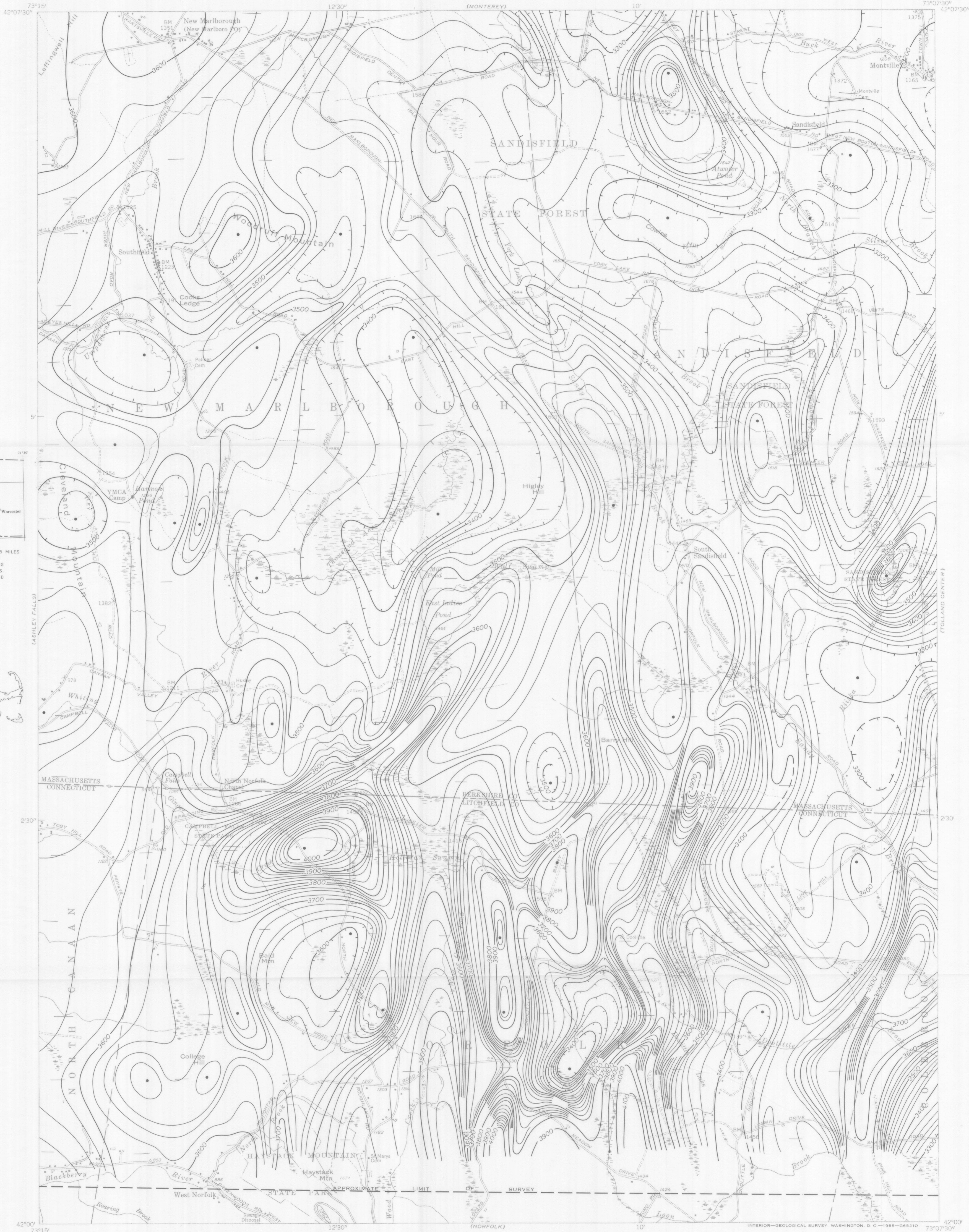
NOTE
Aeromagnetic data are obtained and compiled along a continuous line, whereas ground magnetic surveys are made at separate points. Errors within the normal limits of any magnetic measurement may cause slight discrepancies between flight lines in an aeromagnetic map, which would be more obvious than similar discrepancies between points in a ground magnetic map. For this reason as much care should be exercised in evaluating magnetic features that appear as elongations along a single aeromagnetic traverse as in interpreting an anomaly indicated by a single ground station



INDEX MAP OF WESTERN MASSACHUSETTS SHOWING AEROMAGNETIC MAPS PUBLISHED BY THE U.S. GEOLOGICAL SURVEY AREA OF GP-533 SHADED



INDEX MAP OF MASSACHUSETTS SHOWING AREA OF AEROMAGNETIC SURVEY



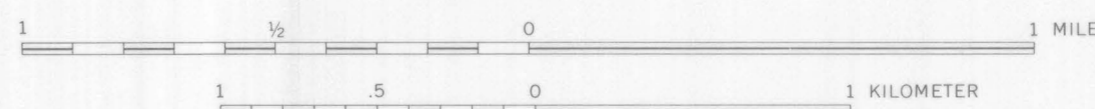
Base by U.S. Geological Survey

Interior—Geological Survey Washington, D.C.—1965—665210
Aeromagnetic survey flown at 500 feet above ground, 1963

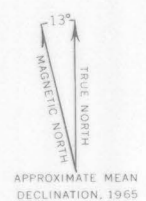
AEROMAGNETIC MAP OF PART OF THE SOUTH SANDISFIELD QUADRANGLE, BERKSHIRE COUNTY MASSACHUSETTS, AND LITCHFIELD COUNTY, CONNECTICUT

By
G. R. Boynton, Peter Popenoe, and G. L. Zandle

SCALE 1:24 000



1965



APPROXIMATE MEAN DECLINATION 1965

For sale by U.S. Geological Survey, price 50 cents